



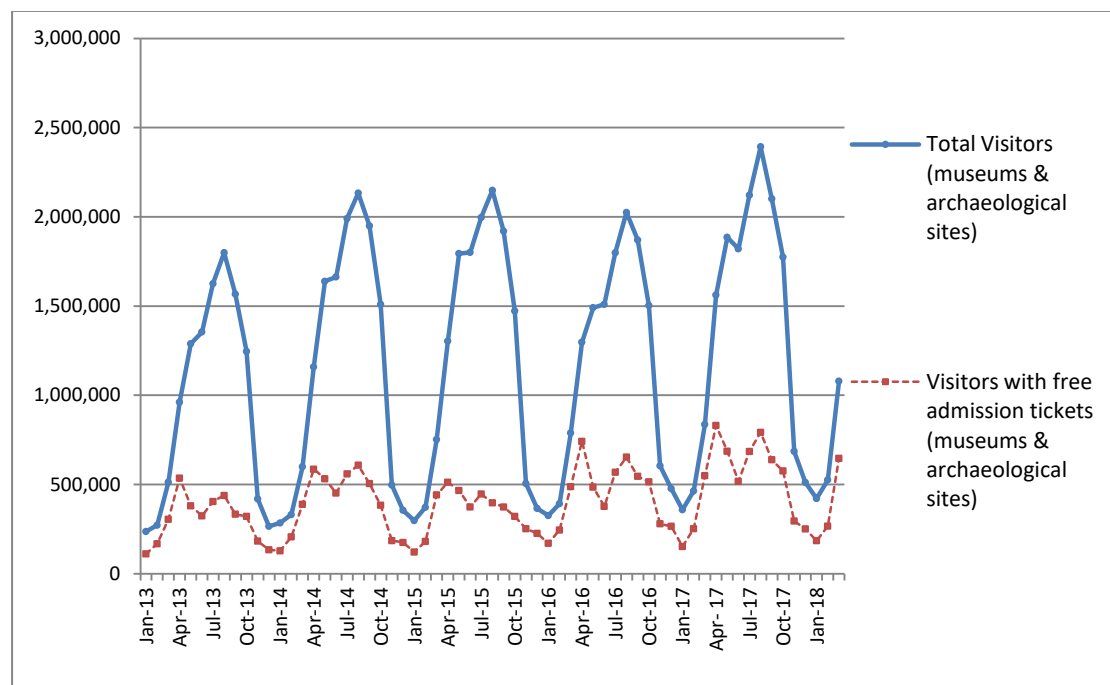
PRESS RELEASE

SURVEY ON MUSEUMS AND ARCHAEOLOGICAL SITES ATTENDANCE MARCH 2018

The Hellenic Statistical Authority (ELSTAT) announces the results of the *Survey on Museums and Archaeological Sites Attendance* for March 2018, More specifically:

- In March 2018 compared with the corresponding month of 2017, Museums experienced a 19.3% increase in the number of visitors and a 11.5% increase in the number of free admission visitors as well as a 40.4% increase in their receipts (Table 1),
- In March 2018 compared with the corresponding month of 2017, the number of visitors at Archaeological sites recorded an increase of 36.1%, while an increase of 22.6% was observed in the number of free admission visitors and a 54.8% increase in the corresponding receipts (Table 1),
- During the three-month period from January to March 2018, an increase of 9.5% was observed in the number of visitors of Museums, while an increase of 6.8% was recorded in the number of free admission visitors and a 12.2% increase in the relevant receipts, in comparison with the corresponding period of 2017 (Table 2),
- As regards Archaeological sites, during the three-month period from January to March 2018, an increase of 32.7% was recorded in the number of visitors, while a 22.7% increase was observed in the number of free admission visitors and a 38.6% increase in the relevant receipts, in comparison with the corresponding period of 2017 (Table 2),

Graph 1: Visitors of Museums and Archaeological sites (Jan 2013 – Mar 2018)



Information:

Social Statistics Division

Section of Culture and Sports statistics,

Argyro Pateraki (Tel: +30 213 1352129, e-mail: ar.pateraki@statistics.gr)

**TABLE 1: VISITORS OF MUSEUMS AND ARCHAEOLOGICAL SITES - TOTAL RECEIPTS
(MARCH 2017 & MARCH 2018)**

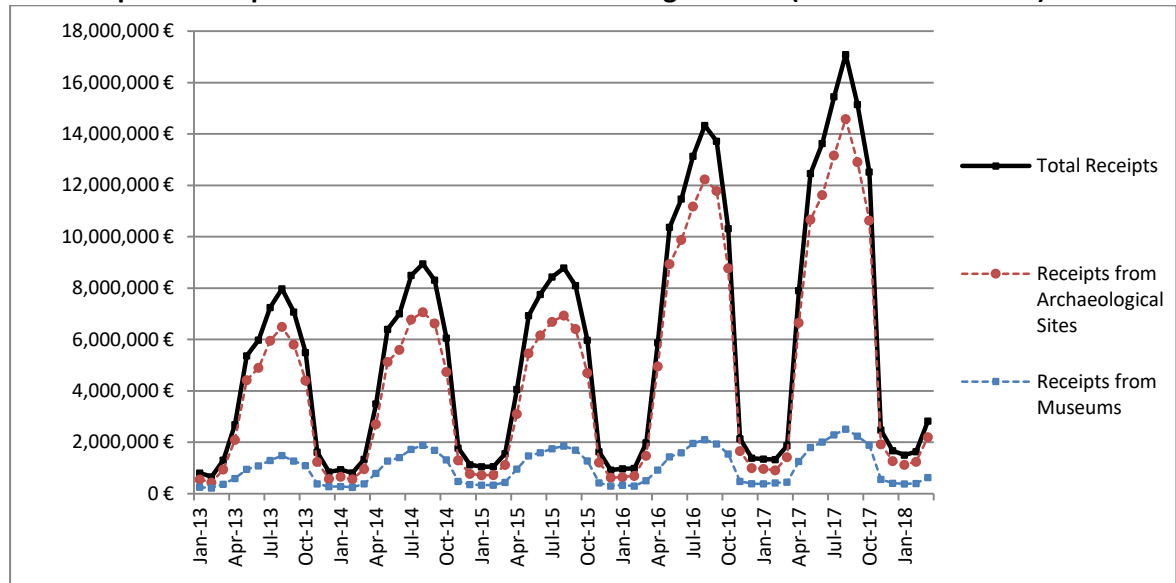
I. VISITORS			
Museums and Archaeological sites	2017	2018	Change 2018/2017
Total number of visitors (A+B)	835,955	1,078,799	29.0%
A. Museums (C+E)	351,226	418,937	19.3%
Acropolis Museum	131,346	153,223	16.7%
National Archaeological	43,895	47,747	8.8%
Ancient Olympia	11,422	13,728	20.2%
Palace of the Grand Master (Rhodes)	3,619	2,587	-28.5%
Herakleion Archaeological (Crete)	10,645	20,537	92.9%
White Tower	20,223	16,077	-20.5%
Delphi	15,717	19,475	23.9%
Other museums	114,359	145,563	27.3%
B. Archaeological Sites (D+F)	484,729	659,862	36.1%
Epidavros ⁽¹⁾	28,316	41,899	48.0%
The Acropolis of Mycenae & Atreus' Treasure	32,085	43,645	36.0%
The Acropolis of Athens ⁽²⁾	125,278	213,205	-
Sounio	17,691	23,781	34.4%
The Acropolis of Lindos	1,721	1,773	3.0%
Royal Tombs of Vergina	17,591	18,710	6.4%
Ancient Olympia	18,442	21,007	13.9%
Knossos (Crete)	7,646	21,111	176.1%
Phaistos (Crete)	897	8,884	890.4%
Ancient Korinthos ⁽¹⁾	8,095	11,557	42.8%
Mystras ⁽¹⁾	5,801	7,968	37.4%
Delphi	25,161	31,723	26.1%
Other archaeological sites	196,005	214,599	9.5%
II. VISITORS WHO PAID TICKET			
	2017	2018	Change 2018/2017
Total number of visitors who paid ticket (C+D)	286,886	432,688	50.8%
C. Museums	108,388	148,210	36.7%
D. Archaeological sites	178,498	284,478	59.4%
III. VISITORS WITH FREE ADMISSION TICKETS			
	2017	2018	Change 2018/2017
Total number of visitors with free admission ticket (E+F)	549,069	646,111	17.7%
E. Museums	242,838	270,727	11.5%
F. Archaeological sites	306,231	375,384	22.6%
IV. RECEIPTS (euros)			
	2017	2018	Change 2018/2017
Total Receipts (G+H)	1,864,552.00	2,822,480.00	51.4%
G. Museums	445,127.00	624,793.00	40.4%
H. Archaeological sites	1,419,425.00	2,197,687.00	54.8%

⁽¹⁾ Flat rate ticket, valid both for the museum and the archaeological site,

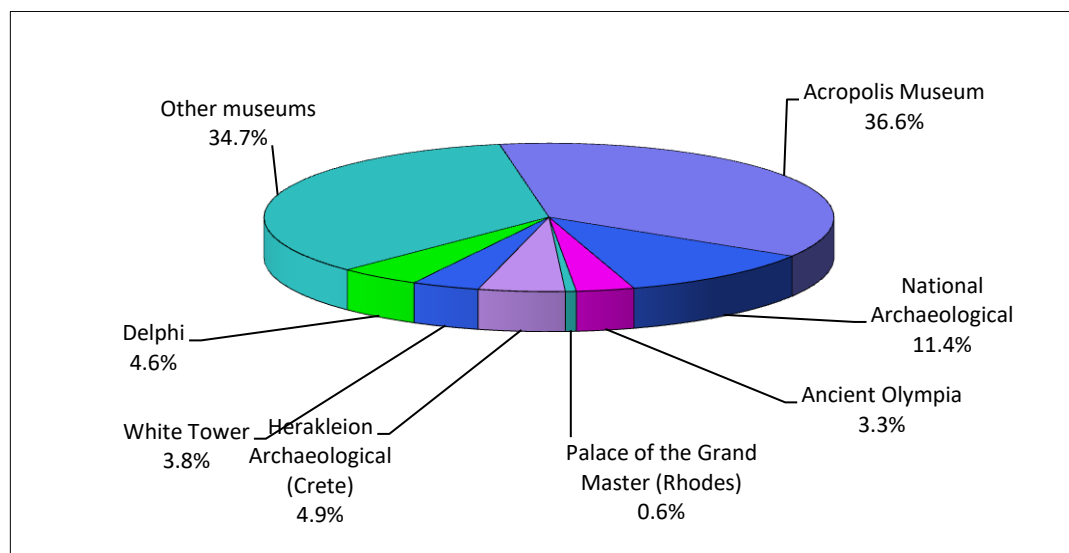
⁽²⁾ From May 2017 onwards, the data for the number of tickets in the archaeological site of the Acropolis of Athens include the tickets of the Ancient Theatre of Dionysos, therefore the data for the years 2017-2018 are not comparable.

The following graphs depict the evolution of the receipts (Graph 2), as well as the number of visitors by Museum and Archaeological Site (Graphs 3 and 4, respectively),

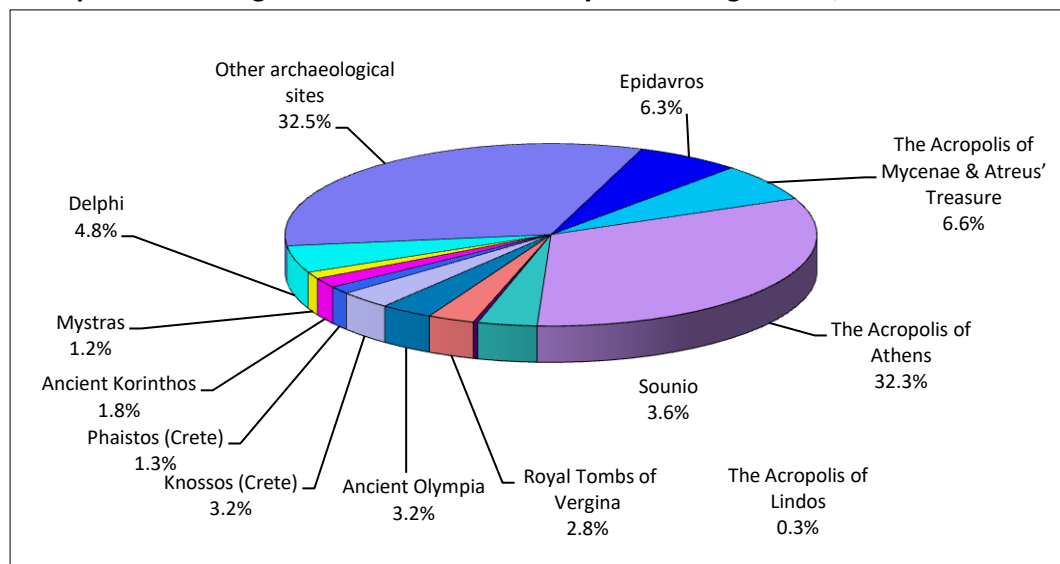
Graph 2: Receipts from Museums and Archaeological Sites (Jan 2013 -Mar 2018)



Graph 3: Percentage distribution of Visitors by Museum, March 2018



Graph 4: Percentage distribution of Visitors by Archaeological site, March 2018



**TABLE 2: VISITORS OF MUSEUMS AND ARCHAEOLOGICAL SITES - TOTAL RECEIPTS
(2016, 2017 AND JANUARY-MARCH 2017 & 2018)**

I. VISITORS					
Museums and Archaeological sites	2016	2017	JANUARY-MARCH		change
			2017	2018	2018/2017
Total number of visitors (A+B)	14.080.639	16.510.878	1,656,953	2,025,096	22.2%
A. Museums (C+E)	4.515.966	5.191.781	746,195	816,713	9.5%
Acropolis Museum	1.406.096	1.593.362	261,206	287,370	10.0%
National Archaeological	447.093	545.555	93,593	100,333	7.2%
Ancient Olympia	124.136	145.118	15,958	20,489	28.4%
Palace of the Grand Master (Rhodes)	237.361	235.413	7,216	5,111	-29.2%
Herakleion Archaeological (Crete)	394.915	426.191	15,536	36,038	132.0%
White Tower	290.192	268.149	51,682	39,804	-23.0%
Delphi	166.091	211.827	28,275	34,605	22.4%
Other museums	1.450.082	1.766.166	272,729	292,963	7.4%
B. Archaeological Sites (D+F)	9.564.673	11.319.097	910,758	1,208,383	32.7%
Epidavros ⁽¹⁾	375.437	469.060	43,362	60,914	40.5%
The Acropolis of Mycenae & Atreus' Treasure	342.854	398.718	48,229	62,780	30.2%
The Acropolis of Athens	1.807.580	2.766.218	239,360	411,521	-
Sounio	222.800	259.709	35,413	46,592	31.6%
The Acropolis of Lindos	421.070	441.012	2,904	2,565	-11.7%
Royal Tombs of Vergina	186.627	203.632	29,611	32,666	10.3%
Ancient Olympia	423.424	481.252	27,633	34,241	23.9%
Knossos (Crete)	611.455	634.710	14,112	35,841	154.0%
Phaistos (Crete)	77.071	95.182	1,651	20,051	1114.5%
Ancient Korinthos ⁽¹⁾	153.307	191.836	15,306	20,698	35.2%
Mystras ⁽¹⁾	114.293	125.549	9,068	12,031	32.7%
Delphi	290.705	345.804	43,828	54,801	25.0%
Other archaeological sites	4.538.050	4.906.415	400,281	413,682	3.3%
II. VISITORS WHO PAID TICKET					
	2016	2017	JANUARY-MARCH		change
			2017	2018	2018+/2017
Total number of visitors who paid ticket (C+D)	8.749.957	10.288.448	704,541	928,116	31.7%
C. Museums	2.406.665	2.831.466	293,062	332,590	13.5%
D. Archaeological sites	6.343.292	7.456.982	411,479	595,526	44.7%
III. VISITORS WITH FREE ADMISSION TICKETS					
	2016	2017	JANUARY-MARCH		change
			2017	2018	2017/2016
Total number of visitors with free admission ticket (E+F)	5.330.682	6.222.430	952,412	1,096,980	15.2%
E. Museums	2.109.301	2.360.315	453,133	484,123	6.8%
F. Archaeological sites	3.221.381	3.862.115	499,279	612,857	22.7%
IV. RECEIPTS (euros)					
	2016	2017	JANUARY-MARCH		change
			2017	2018	2017/2016
Total Receipts (G+H)	86.647.638,00	102.887.879,00	4,531,061.00	5,953,608.00	31.4%
G. Museums	13.448.464,00	16.175.121,00	1,242,253.00	1,394,044.00	12.2%
H. Archaeological sites	73.199.174,00	86.712.758,00	3,288,808.00	4,559,564.00	38.6%

⁽¹⁾ Flat rate ticket, valid both for the museum and the archaeological site,

⁽²⁾ From May 2017 onwards, the data for the number of tickets in the archaeological site of the Acropolis of Athens include the tickets of the Ancient Theatre of Dionysos, therefore the data for the years 2017-2018 are not comparable.

EXPLANATORY NOTES

Survey on Museums and Archaeological Sites Attendance	The Survey on Museums and Archaeological Sites Attendance has been producing results since 1970, The survey collects data from the Archaeological Receipts Fund (ARF) of the Ministry of Culture and Sports concerning the number of visitors and the receipts from the tickets sold in the Museums and Archaeological sites of the country. The corresponding data for the Acropolis Museum are available from December 2009 onwards.
Legal Framework	The survey is conducted since 1970 on a regular basis and it produces results on a monthly and yearly basis, in compliance with the Joint Ministerial Decision 15189/B379/73.
Reference Period	01/03/2018 to 31/03/2018.
Methodology and Definitions	The Survey is conducted on a monthly basis from data collected from the Archaeological Receipts Fund (ARF) of the Ministry of Culture and Sports concerning on the number of visitors and the receipts from the tickets sold in the Museums and Archaeological sites of the country, ELSTAT tabulates the data on Museums and the Archaeological sites for the whole of the Country, by month and by year.

Information on ticket payment

- From January 2002 onwards, the number of Museums' visitors includes both the visitors who have bought a ticket and the visitors with free admission ticket, From 16-06-1996 onwards, the Museums and the Archaeological sites all over Greece have a paid admission for all the visitors, Greeks and foreigners, all over the year, except in the following days, which are free admission days:
- National Holidays (25th of March and 28th of October)
- The first Sunday every month during the five month period from 1 November to 31 March
- The 6th of March (in memory of Melina Merkouri)
- The 18th of April (International Monuments Day)
- The 18th of May (International Museums Day)
- The 5th of June (International Environment Day)
- The last weekend of September, annually (European Heritage Days)

Free admission tickets

The admission to Museums and Archaeological site is free for:

- Young people from EU-countries aged under 18 years, with current identification card to confirm their age,
- Students of Universities and of Higher and Technical Education Institutions or equivalent institutions of EU-countries, as well as of Tour Guide Training Institutes, with valid student identification card or International Student Identity Card (ISIC)
- Employees of the Hellenic Ministry of Culture, with valid professional identity card
- ICOM and ICOMOS cardholders
- Tour Guides with their current working identification card from the Ministry of Development
- Teachers accompanying pupils and students on primary, secondary and tertiary education institution tours
- Journalists with valid journalists' identification card
- Members of Associations and Societies of Friends of Museums and Archaeological Sites
- Official guests of the Greek Government, after relevant approval
- Escorts of blind persons and persons with disabilities
- Free admission cardholders
- Holders of the Culture Card

Number of flat rate tickets

From April 1999 onwards, in some museums and the nearby archaeological sites, in addition to the ordinary ticket, a new "flat rate ticket" was established, which is valid for both the museum and the nearby archaeological site, The total number of these flat rate tickets for **March 2018** was **20,839**.

More information on the Survey on Museums and Archaeological Sites Attendance and detailed time series are available on: <http://www.statistics.gr/en/statistics/-/publication/SCI21/->