



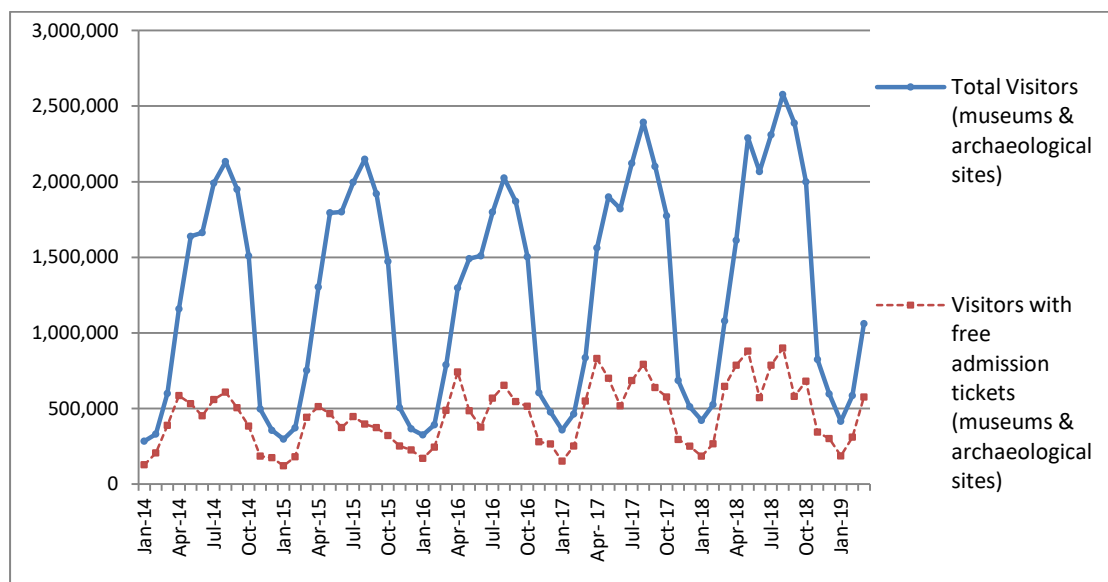
PRESS RELEASE

SURVEY ON MUSEUMS AND ARCHAEOLOGICAL SITES ATTENDANCE MARCH 2019

The Hellenic Statistical Authority (ELSTAT) announces the results of the *Survey on Museums and Archaeological Sites Attendance* for March 2019, More specifically:

- In March 2019 compared with the corresponding month of 2018, Museums experienced a 5.5% decrease in the number of visitors and a 14.8% decrease in the number of free admission visitors as well as a 6.6% increase in their receipts (Table 1),
- In March 2019 compared with the corresponding month of 2018, the number of visitors at Archaeological sites recorded an increase of 0.8%, while a decrease of 8.1% was observed in the number of free admission visitors and a 12.5% increase in the corresponding receipts (Table 1),
- During the three-month period from January to March 2019, an increase of 1.6% was observed in the number of visitors of Museums, while a decrease of 4.6% was recorded in the number of free admission visitors and a 12.4% increase in the relevant receipts, in comparison with the corresponding period of 2018 (Table 2),
- As regards Archaeological sites, during the three-month period from January to March 2019, an increase of 1.9% was recorded in the number of visitors, while an 0.5% decrease was observed in the number of free admission visitors and a 8.0% increase in the relevant receipts, in comparison with the corresponding period of 2018 (Table 2).

Graph 1: Visitors of Museums and Archaeological sites (Jan 2014 – Mar 2019)



Information:

Social Statistics Division

Section of Culture and Sports statistics

Argyro Pateraki (Tel: +30 213 1352129, e-mail: ar.pateraki@statistics.gr)

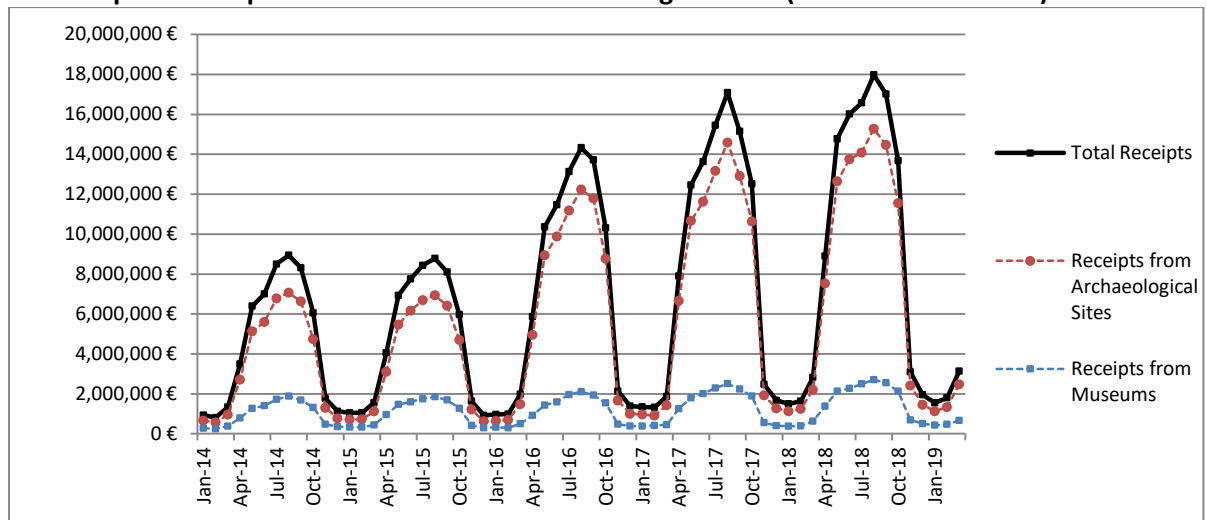
**TABLE 1: VISITORS OF MUSEUMS AND ARCHAEOLOGICAL SITES - TOTAL RECEIPTS
(MARCH 2018 & MARCH 2019)**

I. VISITORS			
Museums and Archaeological sites	2018	2019	Change 2019/2018
Total number of visitors (A+B)	1,078,799	1,061,020	-1.6%
A. Museums (C+E)	418,937	395,714	-5.5%
Acropolis Museum	153,223	142,248	-7.2%
National Archaeological	47,747	43,241	-9.4%
Ancient Olympia	13,728	13,771	0.3%
Palace of the Grand Master (Rhodes)	2,587	2,761	6.7%
Herakleion Archaeological (Crete)	20,537	14,134	-31.2%
White Tower	16,077	20,483	27.4%
Delphi	19,475	22,216	14.1%
Other museums	145,563	136,860	-6.0%
B. Archaeological Sites (D+F)	659,862	665,306	0.8%
Epidavros ⁽¹⁾	41,899	37,884	-9.6%
The Acropolis of Mycenae & Atreus' Treasure	43,645	40,487	-7.2%
The Acropolis of Athens	213,205	209,755	-1.6%
Sounio	23,781	25,498	7.2%
The Acropolis of Lindos	1,773	2,196	23.9%
Royal Tombs of Vergina	18,710	19,700	5.3%
Ancient Olympia	21,007	25,550	21.6%
Knossos (Crete)	21,111	20,214	-4.2%
Phaistos (Crete)	8,884	5,727	-35.5%
Ancient Korinthos ⁽¹⁾	11,557	11,405	-1.3%
Mystras ⁽¹⁾	7,968	7,692	-3.5%
Delphi	31,723	32,411	2.2%
Other archaeological sites	214,599	226,787	5.7%
II. VISITORS WHO PAID TICKET			
	2018	2019	Change 2019/2018
Total number of visitors who paid ticket (C+D)	432,688	485,478	12.2%
C. Museums	148,210	165,154	11.4%
D. Archaeological sites	284,478	320,324	12.6%
III. VISITORS WITH FREE ADMISSION TICKETS			
	2018	2019	Change 2019/2018
Total number of visitors with free admission ticket (E+F)	646,111	575,542	-10.9%
E. Museums	270,727	230,560	-14.8%
F. Archaeological sites	375,384	344,982	-8.1%
IV. RECEIPTS (euros)			
	2018	2019	Change 2019/2018
Total Receipts (G+H)	2,822,480	3,137,496	11.2%
G. Museums	624,793	665,784	6.6%
H. Archaeological sites	2,197,687	2,471,712	12.5%

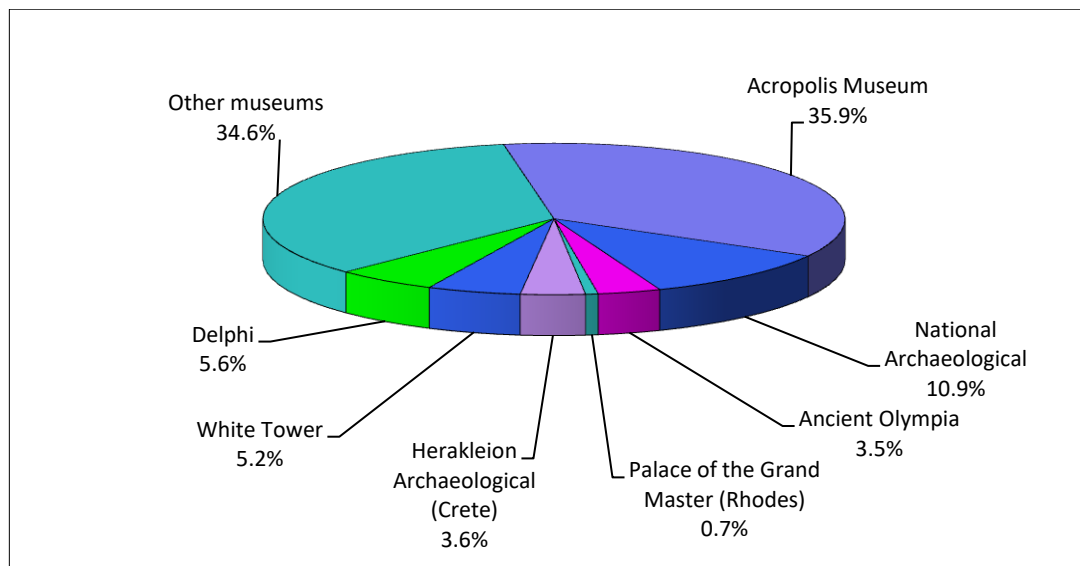
⁽¹⁾ Flat rate ticket. valid both for the museum and the archaeological site.

The following graphs depict the evolution of the receipts (Graph 2), as well as the number of visitors by Museum and Archaeological Site (Graphs 3 and 4, respectively),

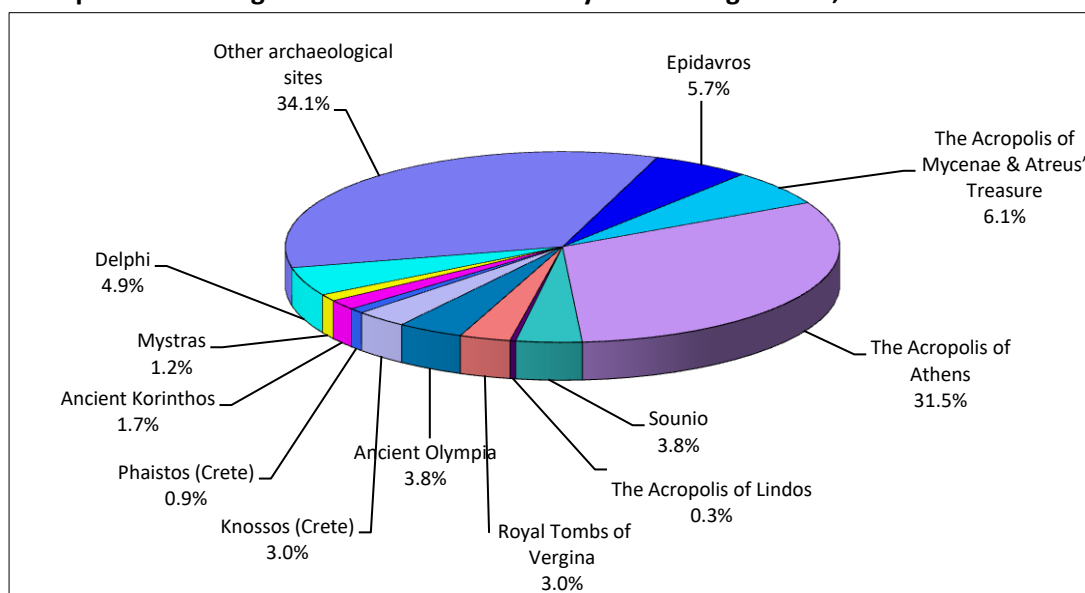
Graph 2: Receipts from Museums and Archaeological Sites (Jan 2014 - Mar 2019)



Graph 3: Percentage distribution of Visitors by Museum, March 2019



Graph 4: Percentage distribution of Visitors by Archaeological site, March 2019



**TABLE 2: VISITORS OF MUSEUMS AND ARCHAEOLOGICAL SITES - TOTAL RECEIPTS
(2017, 2018 AND JANUARY-MARCH 2018 & 2019)**

I. VISITORS					
Museums and Archaeological sites	2017	2018	JANUARY-MARCH		change
			2018	2019	2019/2018
Total number of visitors (A+B)	16,524,557	18,603,282	2,025,096	2,061,611	1.8%
A. Museums (C+E)	5,191,781	5,702,211	816,713	829,920	1.6%
Acropolis Museum	1,593,362	1,774,304	287,370	302,598	5.3%
National Archaeological	545,555	594,219	100,333	109,520	9.2%
Ancient Olympia	145,118	156,658	20,489	19,809	-3.3%
Palace of the Grand Master (Rhodes)	235,413	242,759	5,111	4,839	-5.3%
Herakleion Archaeological (Crete)	426,191	555,031	36,038	25,103	-30.3%
White Tower	268,149	225,944	39,804	42,220	6.1%
Delphi	211,827	249,754	34,605	38,712	11.9%
Other museums	1,766,166	1,903,542	292,963	287,119	-2.0%
B. Archaeological Sites (D+F)	11,332,776	12,901,071	1,208,383	1,231,691	1.9%
Epidavros ⁽¹⁾	469,060	548,900	60,914	57,134	-6.2%
The Acropolis of Mycenae & Atreus' Treasure	412,397	495,993	62,780	60,687	-3.3%
The Acropolis of Athens ⁽²⁾	2,766,218	3,150,604	411,521	429,888	4.5%
Sounio	259,709	306,665	46,592	48,053	3.1%
The Acropolis of Lindos ⁽³⁾	441,012	489,137	2,565	2,854	11.3%
Royal Tombs of Vergina	203,632	222,503	32,666	32,554	-0.3%
Ancient Olympia	481,252	484,238	34,241	37,391	9.2%
Knossos (Crete)	634,710	855,663	35,841	30,279	-15.5%
Phaistos (Crete)	95,182	134,538	20,051	11,149	-44.4%
Ancient Korinthos ⁽¹⁾	191,836	196,944	20,698	21,852	5.6%
Mystras ⁽¹⁾	125,549	145,939	12,031	11,130	-7.5%
Delphi	345,804	405,947	54,801	53,098	-3.1%
Other archaeological sites	4,906,415	5,464,000	413,682	435,622	5.3%
II. VISITORS WHO PAID TICKET					
	2017	2018	JANUARY-MARCH		change
			2018	2019	2019/2018
Total number of visitors who paid ticket (C+D)	10,288,448	11,576,110	928,116	989,703	6.6%
C. Museums	2,831,466	3,155,269	332,590	367,862	10.6%
D. Archaeological sites	7,456,982	8,420,841	595,526	621,841	4.4%
III. VISITORS WITH FREE ADMISSION TICKETS					
	2017	2018	JANUARY-MARCH		change
			2018	2019	2019/2018
Total number of visitors with free admission ticket (E+F)	6,236,109	7,027,172	1,096,980	1,071,908	-2.3%
E. Museums	2,360,315	2,546,942	484,123	462,058	-4.6%
F. Archaeological sites	3,875,794	4,480,230	612,857	609,850	-0.5%
IV. RECEIPTS (euros)					
	2017	2018	JANUARY-MARCH		change
			2018	2019	2019/2018
Total Receipts (G+H)	102,887,879,00	115,772,341,00	5,953,608	6,489,204	9.0%
G. Museums	16,175,121,00	18,251,493,00	1,394,044	1,566,410	12.4%
H. Archaeological sites	86,712,758,00	97,520,848,00	4,559,564	4,922,794	8.0%

⁽¹⁾ Flat rate ticket, valid both for the museum and the archaeological site.

⁽²⁾ From May 2017 onwards, the data for the number of tickets in the archaeological site of the Acropolis of Athens include the tickets of the Ancient Theatre of Dionysos.

⁽³⁾ The data referring to the number of tickets for the archaeological sites of the Acropolis of Lindos from November 2018 to February 2019 are provisional and are based on estimation.

EXPLANATORY NOTES

Survey on Museums and Archaeological Sites Attendance	<p>The Survey on Museums and Archaeological Sites Attendance has been producing results since 1970. The survey collects data from the Archaeological Receipts Fund (ARF) of the Ministry of Culture and Sports concerning the number of visitors and the receipts from the tickets sold in the Museums and Archaeological sites of the country.</p> <p>The corresponding data for the Acropolis Museum are available from December 2009 onwards.</p>
Legal Framework	<p>The survey is conducted since 1970 on a regular basis and it produces results on a monthly and yearly basis, in compliance with the Joint Ministerial Decision 15189/B379/73.</p>
Reference Period	<p>01/03/2019 to 31/03/2019.</p>
Methodology and Definitions	<p>The Survey is conducted on a monthly basis from data collected from the Archaeological Receipts Fund (ARF) of the Ministry of Culture and Sports concerning on the number of visitors and the receipts from the tickets sold in the Museums and Archaeological sites of the country. ELSTAT tabulates the data on Museums and the Archaeological sites for the whole of the Country, by month and by year.</p> <p>Number of flat rate tickets</p> <p>From April 1999 onwards, in some museums and the nearby archaeological sites, in addition to the ordinary ticket, a new “flat rate ticket” was established, which is valid for both the museum and the nearby archaeological site, The total number of these flat rate tickets for March 2019 was 20,342.</p>
References	<p>More information on the Survey on Museums and Archaeological Sites Attendance and detailed time series are available on: http://www.statistics.gr/en/statistics/-/publication/SCI21/</p>