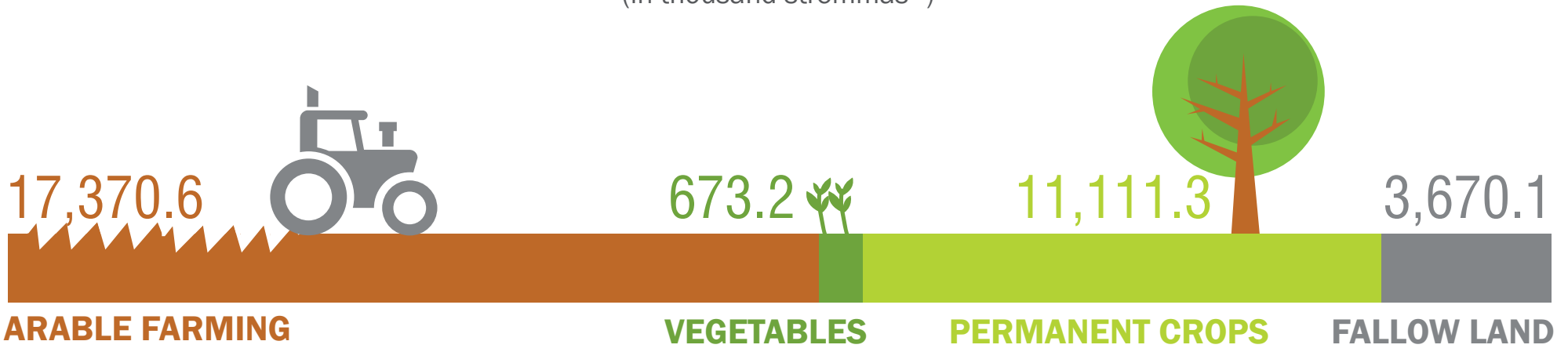


AGRICULTURAL STATISTICAL SURVEY, 2015

changes 2015/2014

CULTIVATED AREAS BY CROP TYPE

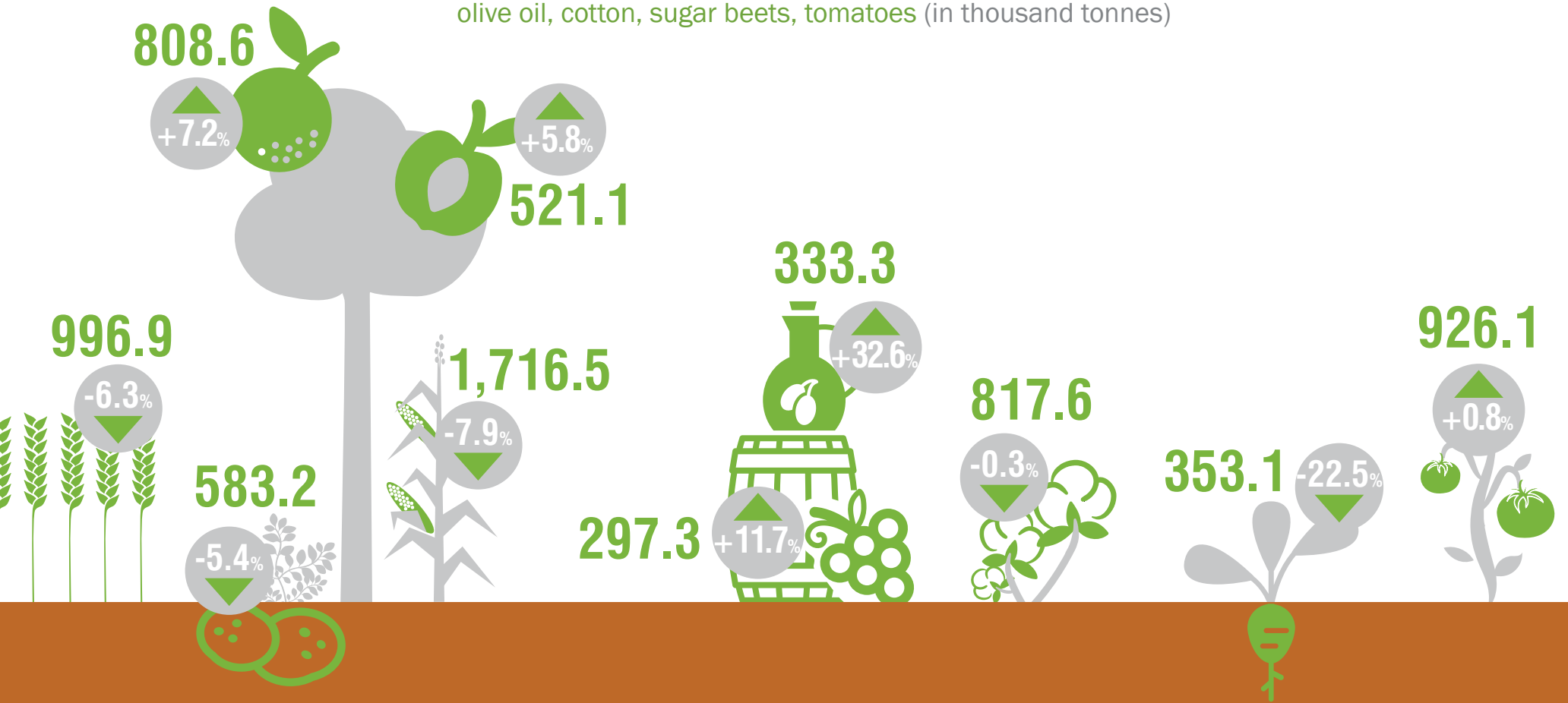
(in thousand stremmas*)



(*1 stremma = 0.1 ha)

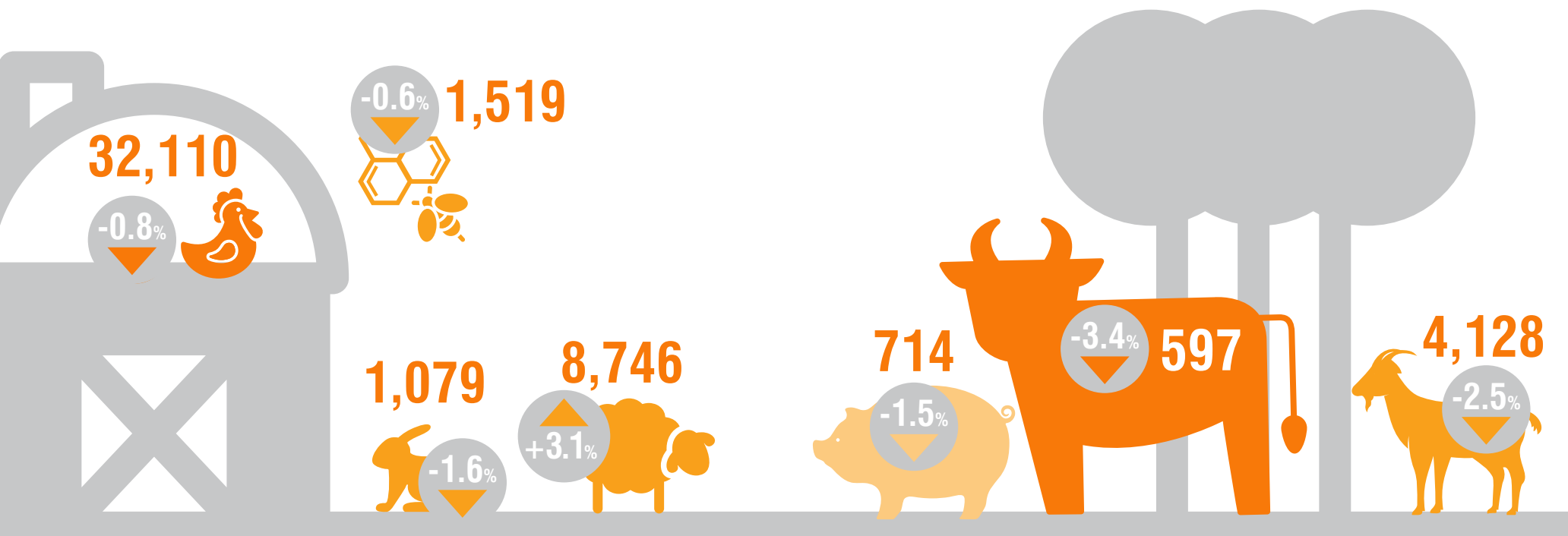
PRODUCTION OF AGRICULTURAL PRODUCTS

durum wheat, potatoes, oranges, peaches-nectarines, grain maize, must, olive oil, cotton, sugar beets, tomatoes (in thousand tonnes)



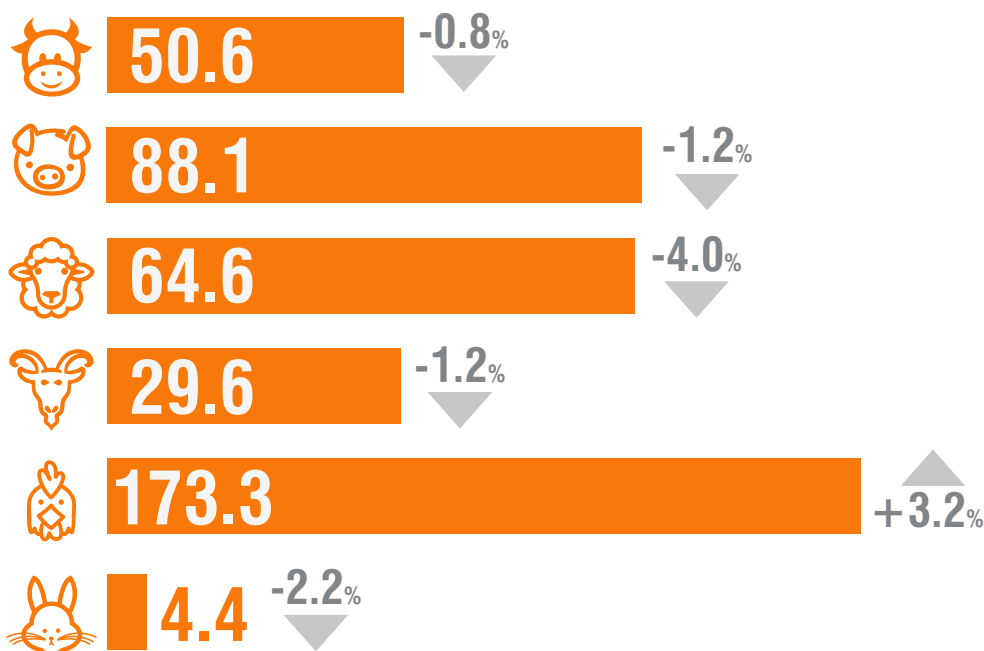
ANIMAL CAPITAL BY SPECIES

poultry, beehives, rabbits, sheep, pigs, bovine animals, goats (in thousands)



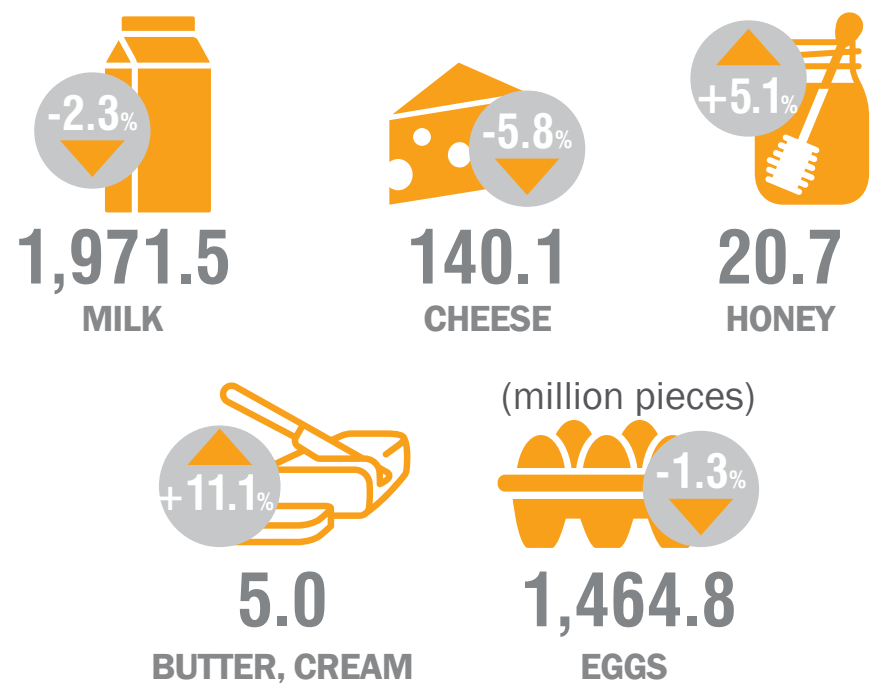
PRODUCTION OF MEAT

(in thousand tonnes)



PRODUCTION OF MILK AND LIVESTOCK PRODUCTS

(in thousand tonnes)



AGRICULTURAL MACHINERY

(in thousands)

