



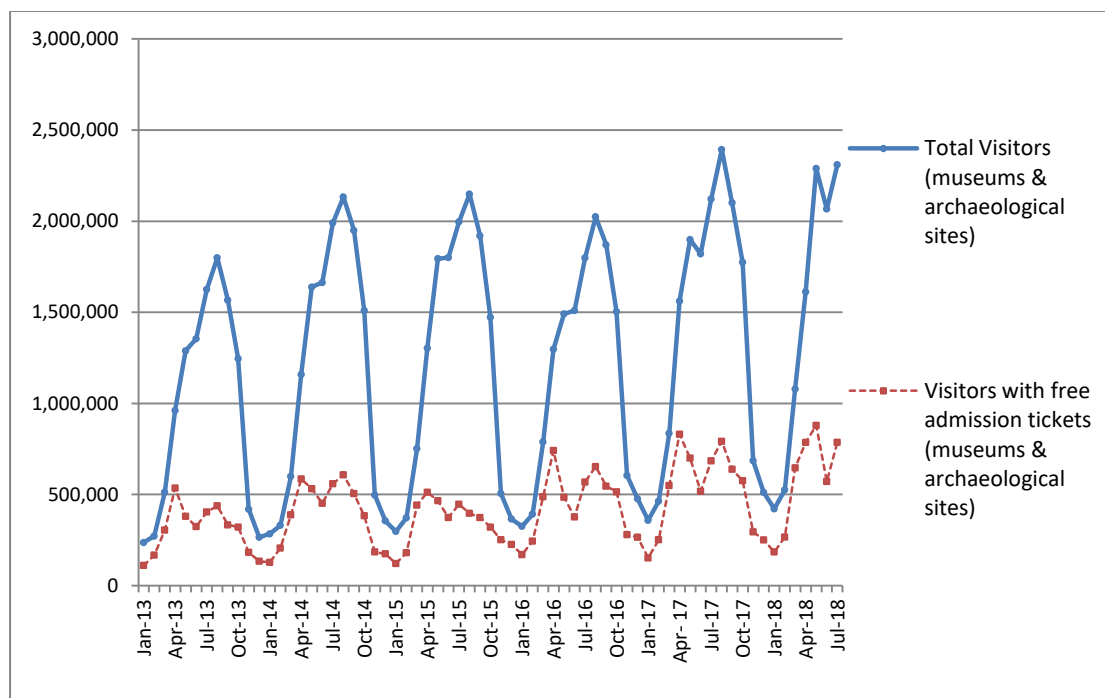
PRESS RELEASE

SURVEY ON MUSEUMS AND ARCHAEOLOGICAL SITES ATTENDANCE JULY 2018

The Hellenic Statistical Authority (ELSTAT) announces the results of the *Survey on Museums and Archaeological Sites Attendance* for July 2018. More specifically:

- In July 2018 compared with the corresponding month of 2017, Museums experienced an 4.6% increase in the number of visitors and a 0.9% increase in the number of free admission visitors as well as a 9.2% increase in their receipts (Table 1),
- In July 2018 compared with the corresponding month of 2017, the number of visitors at Archaeological sites recorded an increase of 10.6%, while an increase of 21.5% was observed in the number of free admission visitors and an 7.0% increase in the corresponding receipts (Table 1),
- During the seven-month period from January to July 2018, an increase of 8.6% was observed in the number of visitors of Museums, while an increase of 4.9% was recorded in the number of free admission visitors and a 12.7% increase in the relevant receipts, in comparison with the corresponding period of 2017 (Table 2),
- As regards Archaeological sites, during the seven-month period from January to July 2018, an increase of 16.2% was recorded in the number of visitors, while a 16.0% increase was observed in the number of free admission visitors and a 15.8% increase in the relevant receipts, in comparison with the corresponding period of 2017 (Table 2),

Graph 1: Visitors of Museums and Archaeological sites (Jan 2013 – July 2018)



Information:

Social Statistics Division

Section of Culture and Sports statistics,

Argyri Pateraki (Tel: +30 213 1352129, e-mail: ar.pateraki@statistics.gr)

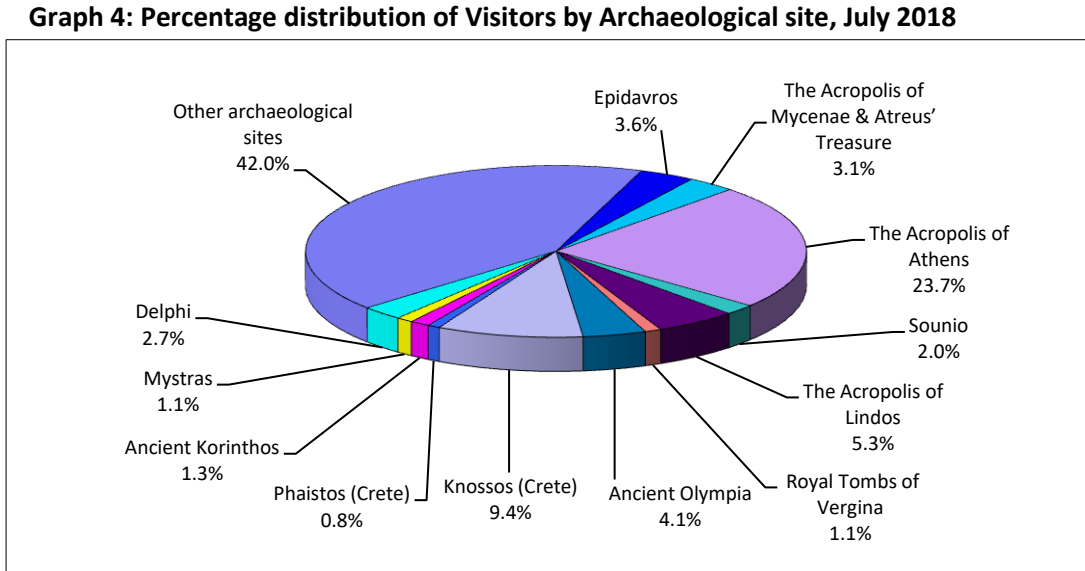
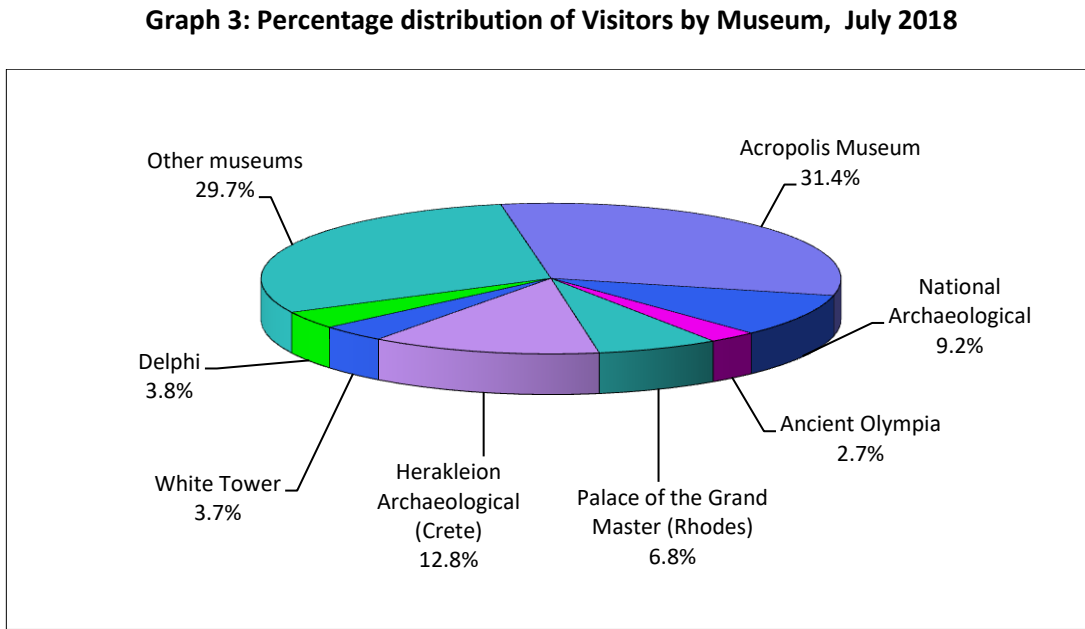
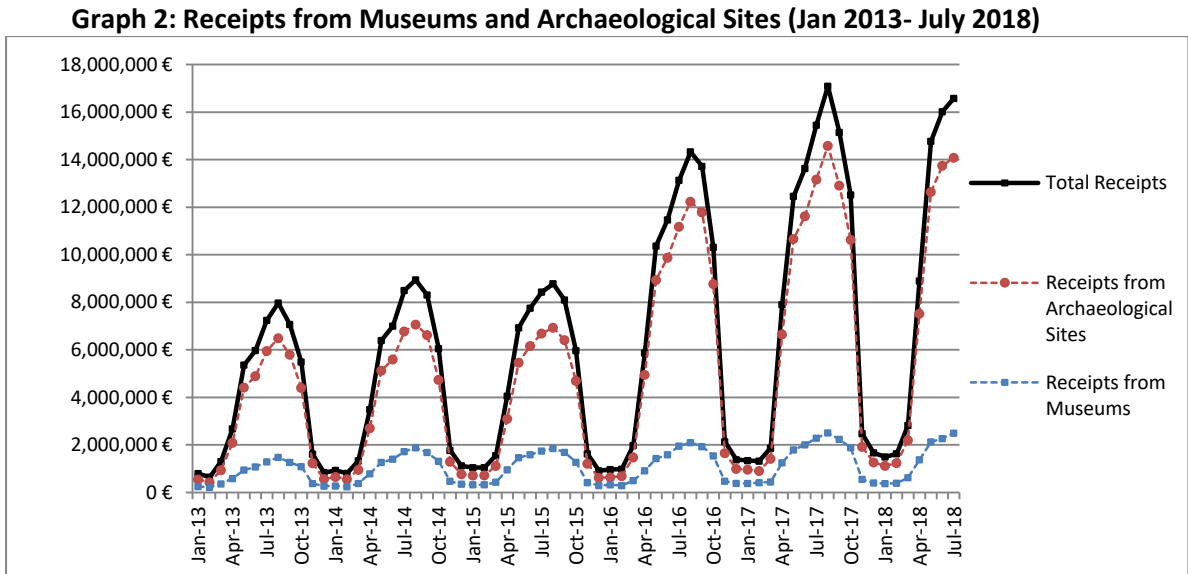
**TABLE 1: VISITORS OF MUSEUMS AND ARCHAEOLOGICAL SITES - TOTAL RECEIPTS
(JULY 2017 & JULY 2018)**

I. VISITORS			
Museums and Archaeological sites	2017	2018	Change 2018/2017
Total number of visitors (A+B)	2,121,488	2,310,022	8.9%
A. Museums (C+E)	597,205	624,741	4.6%
Acropolis Museum	187,573	196,446	4.7%
National Archaeological	55,169	57,738	4.7%
Ancient Olympia	15,600	16,710	7.1%
Palace of the Grand Master (Rhodes)	38,185	42,218	10.6%
Herakleion Archaeological (Crete)	66,431	79,794	20.1%
White Tower	29,574	22,948	-22.4%
Delphi	20,287	23,589	16.3%
Other museums	184,386	185,298	0.5%
B. Archaeological Sites (D+F)	1,524,283	1,685,281	10.6%
Epidavros ⁽¹⁾	54,811	60,095	9.6%
The Acropolis of Mycenae & Atreus' Treasure	46,493	52,465	12.8%
The Acropolis of Athens ⁽²⁾	381,540	398,987	4.6%
Sounio	31,046	33,398	7.6%
The Acropolis of Lindos	76,936	88,615	15.2%
Royal Tombs of Vergina	16,765	17,802	6.2%
Ancient Olympia	72,000	68,541	-4.8%
Knossos (Crete)	108,338	158,787	46.6%
Phaistos (Crete)	11,355	13,545	19.3%
Ancient Korinthos ⁽¹⁾	18,897	21,459	13.6%
Mystras ⁽¹⁾	16,133	18,081	12.1%
Delphi	39,504	45,705	15.7%
Other archaeological sites	650,465	707,801	8.8%
II. VISITORS WHO PAID TICKET			
	2017	2018	Change 2018/2017
Total number of visitors who paid ticket (C+D)	1,436,830	1,523,999	6.1%
C. Museums	374,894	400,489	6.8%
D. Archaeological sites	1,061,936	1,123,510	5.8%
III. VISITORS WITH FREE ADMISSION TICKETS			
	2017	2018	Change 2018/2017
Total number of visitors with free admission ticket (E+F)	684,658	786,023	14.8%
E. Museums	222,311	224,252	0.9%
F. Archaeological sites	462,347	561,771	21.5%
IV. RECEIPTS (euros)			
	2017	2018	Change 2018/2017
Total Receipts (G+H)	15,452,761.00	16,578,966.00	7.3%
G. Museums	2,287,463.00	2,497,780.00	9.2%
H. Archaeological sites	13,165,298.00	14,081,186.00	7.0%

⁽¹⁾ Flat rate ticket, valid both for the museum and the archaeological site,

⁽²⁾ From May 2017 onwards, the data for the number of tickets in the archaeological site of the Acropolis of Athens include the tickets of the Ancient Theatre of Dionysos.

The following graphs depict the evolution of the receipts (Graph 2), as well as the number of visitors by Museum and Archaeological Site (Graphs 3 and 4, respectively).



**TABLE 2: VISITORS OF MUSEUMS AND ARCHAEOLOGICAL SITES - TOTAL RECEIPTS
(2016, 2017 AND JANUARY-JULY 2017 & 2018)**

I. VISITORS					
Museums and Archaeological sites	2016	2017	JANUARY-JULY		change
			2017	2018	2018/2017
Total number of visitors (A+B)	14,080,639	16,524,557	9,059,833⁽³⁾	10,303,211	13.7%
A. Museums (C+E)	4,515,966	5,191,781	2,915,247	3,166,039	8.6%
Acropolis Museum	1,406,096	1,593,362	911,054	1,007,781	10.6%
National Archaeological	447,093	545,555	314,552	325,164	3.4%
Ancient Olympia	124,136	145,118	87,575	95,732	9.3%
Palace of the Grand Master (Rhodes)	237,361	235,413	116,820	117,684	0.7%
Herakleion Archaeological (Crete)	394,915	426,191	205,817	282,881	37.4%
White Tower	290,192	268,149	150,434	117,608	-21.8%
Delphi	166,091	211,827	128,837	148,037	14.9%
Other museums	1,450,082	1,766,166	1,000,158	1,071,152	7.1%
B. Archaeological Sites (D+F)	9,564,673	11,332,776	6,144,586⁽³⁾	7,137,172	16.2%
Epidavros ⁽¹⁾	375,437	469,060	283,877	333,817	17.6%
The Acropolis of Mycenae & Atreus' Treasure ⁽³⁾	342,854	412,397	246,004 ⁽³⁾	299,773	21.9%
The Acropolis of Athens	1,807,580	2,766,218	1,467,176	1,810,830	23.4%
Sounio	222,800	259,709	148,979	183,927	23.5%
The Acropolis of Lindos	421,070	441,012	212,537	243,893	14.8%
Royal Tombs of Vergina	186,627	203,632	124,043	137,711	11.0%
Ancient Olympia	423,424	481,252	254,835	269,552	5.8%
Knossos (Crete)	611,455	634,710	312,138	426,538	36.7%
Phaistos (Crete)	77,071	95,182	39,991	72,696	81.8%
Ancient Korinthos ⁽¹⁾	153,307	191,836	117,500	112,959	-3.9%
Mystras ⁽¹⁾	114,293	125,549	70,342	83,020	18.0%
Delphi	290,705	345,804	199,442	242,665	21.7%
Other archaeological sites	4,538,050	4,906,415	2,667,722	2,919,791	9.4%
II. VISITORS WHO PAID TICKET					
	2016	2017	JANUARY-JULY		change
			2017	2018	2018/2017
Total number of visitors who paid ticket (C+D)	8,749,957	10,288,448	5,374,962	6,183,844	15.0%
C. Museums	2,406,665	2,831,466	1,513,749	1,696,502	12.1%
D. Archaeological sites	6,343,292	7,456,982	3,861,213	4,487,342	16.2%
III. VISITORS WITH FREE ADMISSION TICKETS					
	2016	2017	JANUARY-JULY		change
			2017	2018	2017/2016
Total number of visitors with free admission ticket (E+F)	5,330,682	6,236,109	3,684,871⁽³⁾	4,119,367	11.8%
E. Museums	2,109,301	2,360,315	1,401,498	1,469,537	4.9%
F. Archaeological sites ⁽³⁾	3,221,381	3,875,794	2,283,373 ⁽³⁾	2,649,830	16.0%
IV. RECEIPTS (euros)					
	2016	2017	JANUARY-JULY		change
			2017	2018	2017/2016
Total Receipts (G+H)	86,647,638.00	102,887,879.00	53,979,904.00	62,224,055.00	15.3%
G. Museums	13,448,464.00	16,175,121.00	8,583,212.00	9,670,543.00	12.7%
H. Archaeological sites	73,199,174.00	86,712,758.00	45,396,692.00	52,553,512.00	15.8%

⁽¹⁾ Flat rate ticket, valid both for the museum and the archaeological site,

⁽²⁾ From May 2017 onwards, the data for the number of tickets in the archaeological site of the Acropolis of Athens include the tickets of the Ancient Theatre of Dionysos.

⁽³⁾ The data on the number of visitors to the archaeological site of the Acropolis of Mycenae & Atreus' Treasure for May 2017 have been revised

EXPLANATORY NOTES

Survey on Museums and Archaeological Sites Attendance	<p>The Survey on Museums and Archaeological Sites Attendance has been producing results since 1970, The survey collects data from the Archaeological Receipts Fund (ARF) of the Ministry of Culture and Sports concerning the number of visitors and the receipts from the tickets sold in the Museums and Archaeological sites of the country.</p> <p>The corresponding data for the Acropolis Museum are available from December 2009 onwards.</p>
Legal Framework	<p>The survey is conducted since 1970 on a regular basis and it produces results on a monthly and yearly basis, in compliance with the Joint Ministerial Decision 15189/B379/73.</p>
Reference Period	<p>01/07/2018 to 31/07/2018.</p>
Methodology and Definitions	<p>The Survey is conducted on a monthly basis from data collected from the Archaeological Receipts Fund (ARF) of the Ministry of Culture and Sports concerning on the number of visitors and the receipts from the tickets sold in the Museums and Archaeological sites of the country, ELSTAT tabulates the data on Museums and the Archaeological sites for the whole of the Country, by month and by year.</p>

Information on ticket payment

- From January 2002 onwards, the number of Museums' visitors includes both the visitors who have bought a ticket and the visitors with free admission ticket, From 16-06-1996 onwards, the Museums and the Archaeological sites all over Greece have a paid admission for all the visitors, Greeks and foreigners, all over the year, except in the following days, which are free admission days:
- National Holidays (25th of March and 28th of October)
- The first Sunday every month during the five month period from 1 November to 31 March
- The 6th of March (in memory of Melina Merkouri)
- The 18th of April (International Monuments Day)
- The 18th of May (International Museums Day)
- The 5th of June (International Environment Day)
- The last weekend of September, annually (European Heritage Days)

Free admission tickets

The admission to Museums and Archaeological site is free for:

- Young people from EU-countries aged under 18 years, with current identification card to confirm their age,
- Students of Universities and of Higher and Technical Education Institutions or equivalent institutions of EU-countries, as well as of Tour Guide Training Institutes, with valid student identification card or International Student Identity Card (ISIC)
- Employees of the Hellenic Ministry of Culture, with valid professional identity card
- ICOM and ICOMOS cardholders
- Tour Guides with their current working identification card from the Ministry of Development
- Teachers accompanying pupils and students on primary, secondary and tertiary education institution tours
- Journalists with valid journalists' identification card
- Members of Associations and Societies of Friends of Museums and Archaeological Sites
- Official guests of the Greek Government, after relevant approval
- Escorts of blind persons and persons with disabilities
- Free admission cardholders
- Holders of the Culture Card

Number of flat rate tickets

From April 1999 onwards, in some museums and the nearby archaeological sites, in addition to the ordinary ticket, a new "flat rate ticket" was established, which is valid for both the museum and the nearby archaeological site, The total number of these flat rate tickets for **July 2018** was **157,755**.

More information on the Survey on Museums and Archaeological Sites Attendance and detailed time series are available on: <http://www.statistics.gr/en/statistics/-/publication/SCI21/->