



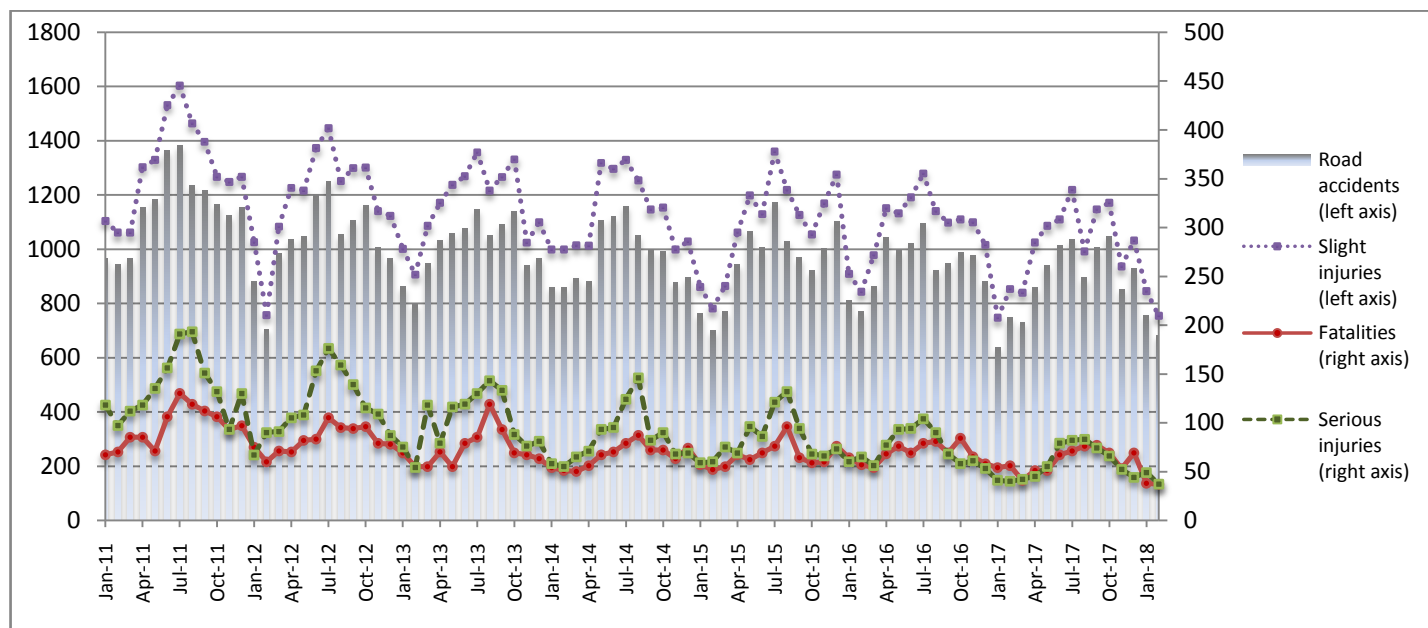
## PRESS RELEASE

### ROAD ACCIDENTS: February 2018

The Hellenic Statistical Authority (ELSTAT) announces provisional<sup>1</sup> data on Road Accidents for February 2018. In particular, the road traffic accidents which occurred in Greece, resulting in death or injury, decreased by 9.2% in comparison with the corresponding month of 2017 (680 road accidents in February 2018, against 749 road accidents in February 2017).

The casualties of the injury-causing accidents that occurred in February 2018 were as follows: 37 deaths, 37 serious injuries and 754 slight injuries. In contrast, in February 2017 the corresponding figures were: 56 deaths, 40 serious injuries and 853 slight injuries. Therefore, road accident casualties in February 2018 decreased by 33.9% for deaths, by 7.5% for serious injuries and by 11.6% for slight injuries.

**Graph 1: Road traffic accidents and casualties,  
January 2011 - February 2018**



Provisional data: May 17 –Feb 18

**Information:**

Social Statistics Division

Justice and Public Order Statistics Section

D. Athanasopoulou

Tel: +30 213 1352767

Fax : +30 213 1352764

e-mail: [d.athanasopoulou@statistics.gr](mailto:d.athanasopoulou@statistics.gr)

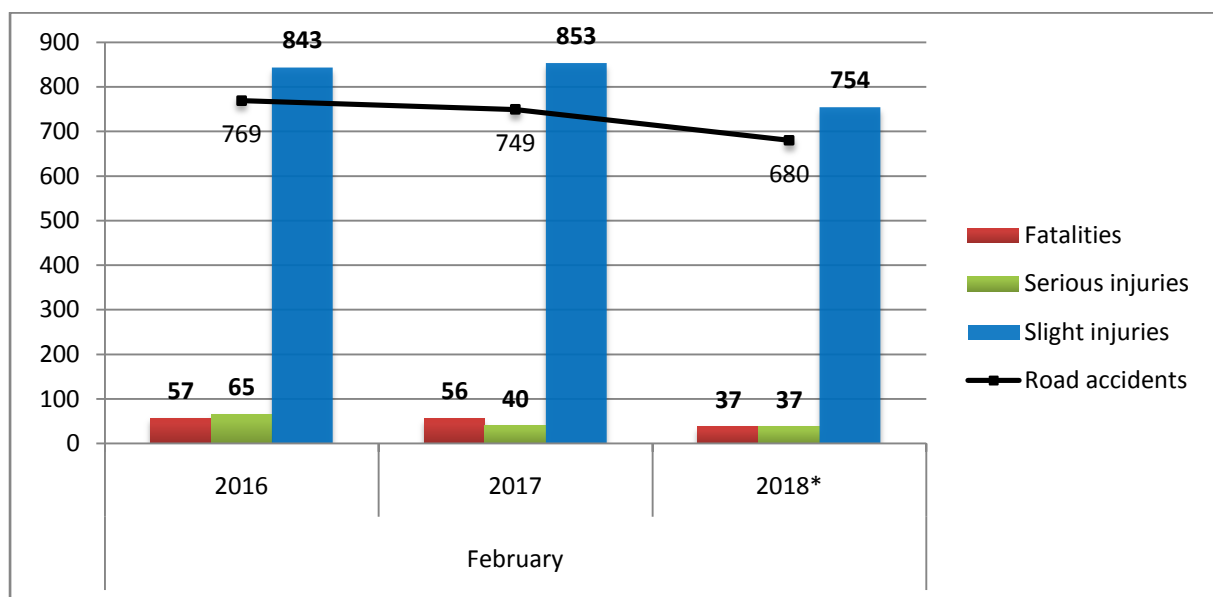
<sup>1</sup> Data for the reference year are provisional until the finalisation of the annual data, which become final 10 months after the end of the reference year. During these 10 months the provisional data are updated on the basis of the data of the Road Accident Forms which are transmitted to ELSTAT by Police Authorities.

**Table 1: Road traffic accidents and casualties, February 2016-2018\***

	February				
	2016	2017	2017/2016 (%)	2018*	2018*/2017 (%)
<b>Road accidents</b>	<b>769</b>	<b>749</b>	<b>-2.6%</b>	<b>680</b>	<b>-9.2%</b>
<b>Fatalities</b>	<b>57</b>	<b>56</b>	<b>-1.8%</b>	<b>37</b>	<b>-33.9%</b>
<b>Total injuries</b>	<b>908</b>	<b>893</b>	<b>-1.7%</b>	<b>791</b>	<b>-11.4%</b>
Serious injuries	65	40	-38.5%	37	-7.5%
Slight injuries	843	853	1.2%	754	-11.6%

\* Provisional data

**Graph 2: Road traffic accidents and casualties, February 2016-2018\***



\* Provisional data

**Table 2: Road traffic accidents and casualties, by region and department, February 2017 – 2018\***

Region and Department	Road accidents			Fatalities			Serious injuries			Slight injuries		
	2017	2018*	%	2017	2018*	%	2017	2018*	%	2017	2018*	%
<b>Greece Total</b>	<b>749</b>	<b>680</b>	<b>-9.2%</b>	<b>56</b>	<b>37</b>	<b>-33.9%</b>	<b>40</b>	<b>37</b>	<b>-7.5%</b>	<b>853</b>	<b>754</b>	<b>-11.6%</b>
<b>Anatoliki Makedonia, Thraki (East Macedonia and Thrace)</b>	<b>22</b>	<b>17</b>	<b>-22.7%</b>	<b>1</b>	<b>0</b>	<b>-100.0%</b>	<b>2</b>	<b>4</b>	<b>100.0%</b>	<b>26</b>	<b>18</b>	<b>-30.8%</b>
Drama	6	1	-83.3%	0	0		0	0		7	2	
Evros	2	8	300.0%	0	0		0	1		2	8	
Kavala	5	5	0.0%	0	0		2	1		5	7	
Xanthi	3	2	-33.3%	1	0		0	1		4	1	
Rodopi	6	1	-83.3%	0	0		0	1		8	0	
<b>Kentriki Makedonia (Central Macedonia)</b>	<b>134</b>	<b>140</b>	<b>4.5%</b>	<b>3</b>	<b>4</b>	<b>33.3%</b>	<b>3</b>	<b>7</b>	<b>133.3%</b>	<b>155</b>	<b>164</b>	<b>5.8%</b>
Imathia	1	5	400.0%	1	1		0	1		3	3	
Thessaloniki	123	119	-3.3%	1	3		1	5		143	142	
Kilkis	1	3	200.0%	0	0		0	0		1	4	
Pella	4	1	-75.0%	1	0		1	0		3	1	
Pieria	0	1	-	0	0		0	0		0	1	
Serres	1	3	200.0%	0	0		1	0		0	4	
Chalkidiki	4	8	100.0%	0	0		0	1		5	9	
<b>Dytiki Makedonia (West Macedonia)</b>	<b>4</b>	<b>3</b>	<b>-25.0%</b>	<b>1</b>	<b>0</b>	<b>-100.0%</b>	<b>0</b>	<b>0</b>	<b>-</b>	<b>6</b>	<b>7</b>	<b>16.7%</b>
Grevena	1	0	-100.0%	0	0		0	0		2	0	
Kastoria	1	0	-100.0%	1	0		0	0		2	0	
Kozani	2	3	50.0%	0	0		0	0		2	7	
Florina	0	0	-	0	0		0	0		0	0	
<b>Ipeiros (Epirus)</b>	<b>10</b>	<b>9</b>	<b>-10.0%</b>	<b>3</b>	<b>2</b>	<b>-33.3%</b>	<b>2</b>	<b>1</b>	<b>-50.0%</b>	<b>7</b>	<b>9</b>	<b>28.6%</b>
Arta	1	1	0.0%	0	1		0	0		3	0	
Thesprotia	3	3	0.0%	1	0		1	0		1	3	
Ioannina	4	5	25.0%	0	1		1	1		3	6	
Preveza	2	0	-100.0%	2	0		0	0		0	0	
<b>Thessalia (Thessaly)</b>	<b>16</b>	<b>11</b>	<b>-31.3%</b>	<b>5</b>	<b>3</b>	<b>-40.0%</b>	<b>2</b>	<b>2</b>	<b>0.0%</b>	<b>17</b>	<b>8</b>	<b>-52.9%</b>
Karditsa	5	6	20.0%	1	2		0	0		5	6	
Larissa	8	3	-62.5%	3	1		2	0		9	2	
Magnissia	3	1	-66.7%	1	0		0	1		3	0	
Trikala	0	1	-	0	0		0	1		0	0	
<b>Ionioi Nisoi (Ionian Islands)</b>	<b>10</b>	<b>6</b>	<b>-40.0%</b>	<b>0</b>	<b>1</b>	<b>-</b>	<b>0</b>	<b>0</b>	<b>-</b>	<b>13</b>	<b>9</b>	<b>-30.8%</b>
Zakynthos	1	0	-100.0%	0	0		0	0		1	0	
Kerkyra	2	3	50.0%	0	1		0	0		2	6	
Kefallinia	5	3	-40.0%	0	0		0	0		8	3	
Lefkada	2	0	-100.0%	0	0		0	0		2	0	

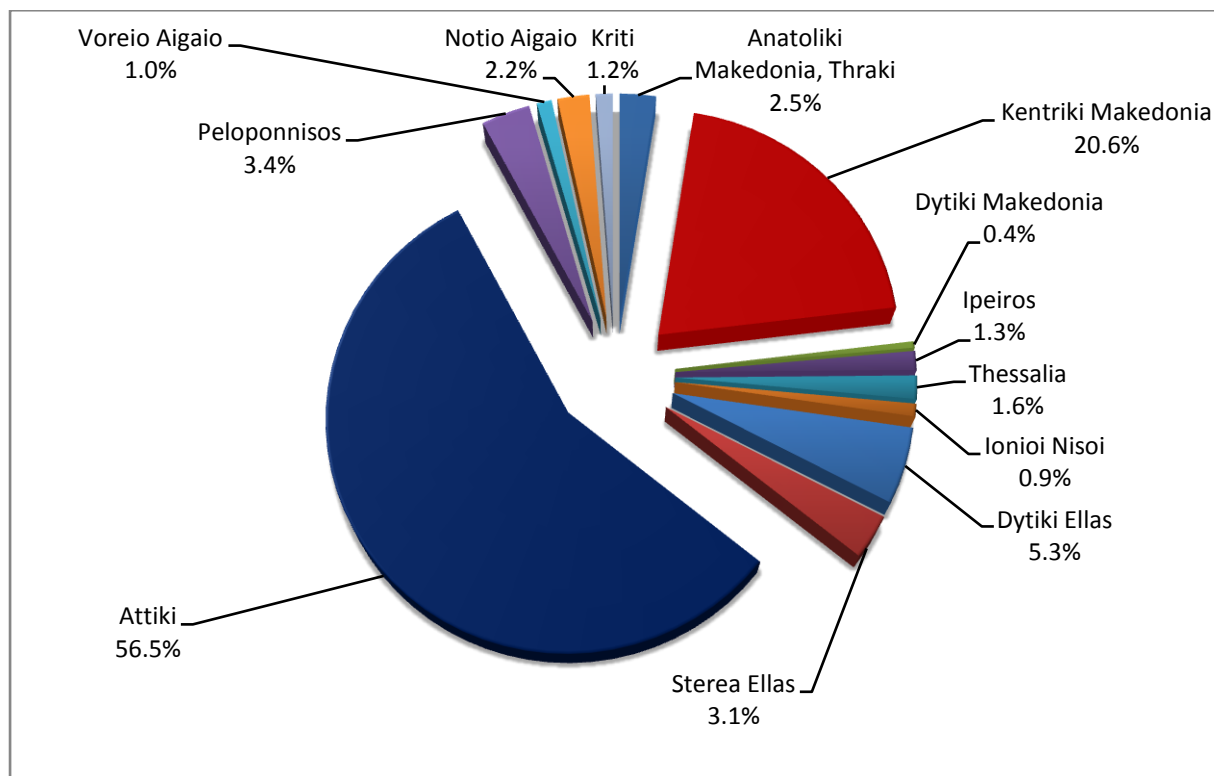
\* Provisional data

**Table 2: Road traffic accidents and casualties, by region and department, February 2017 – 2018\* (Continued)**

Region and Department	Road accidents			Fatalities			Serious injuries			Slight injuries		
	2017	2018*	%	2017	2018*	%	2017	2018*	%	2017	2018*	%
<b>Dytiki Ellas (West Greece)</b>	<b>42</b>	<b>36</b>	<b>-14.3%</b>	<b>9</b>	<b>4</b>	<b>-55.6%</b>	<b>2</b>	<b>4</b>	<b>100.0%</b>	<b>46</b>	<b>39</b>	<b>-15.2%</b>
Etolia & Akarnania	9	13	44.4%	1	1		0	0		11	15	
Achaia	25	16	-36.0%	4	1		1	2		30	21	
Ilia	8	7	-12.5%	4	2		1	2		5	3	
<b>Stereia Ellas</b>	<b>24</b>	<b>21</b>	<b>-12.5%</b>	<b>8</b>	<b>3</b>	<b>-62.5%</b>	<b>4</b>	<b>1</b>	<b>-75.0%</b>	<b>31</b>	<b>21</b>	<b>-32.3%</b>
Viotia	9	9	0.0%	6	1		1	0		13	10	
Evia	10	8	-20.0%	1	1		0	1		14	8	
Evrytania	0	0	-	0	0		0	0		0	0	
Fthiotida	4	4	0.0%	1	1		3	0		3	3	
Fokida	1	0	-100.0%	0	0		0	0		1	0	
<b>Attiki (Attica)</b>	<b>421</b>	<b>384</b>	<b>-8.8%</b>	<b>16</b>	<b>11</b>	<b>-31.3%</b>	<b>11</b>	<b>14</b>	<b>27.3%</b>	<b>486</b>	<b>431</b>	<b>-11.3%</b>
<b>Peloponnisos (Peloponnese)</b>	<b>35</b>	<b>23</b>	<b>-34.3%</b>	<b>6</b>	<b>3</b>	<b>-50.0%</b>	<b>5</b>	<b>0</b>	<b>-100.0%</b>	<b>37</b>	<b>24</b>	<b>-35.1%</b>
Argolida	7	5	-28.6%	0	0		0	0		10	6	
Arkadia	5	3	-40.0%	0	0		0	0		7	5	
Korinthia	9	5	-44.4%	2	0		3	0		8	5	
Lakonia	9	3	-66.7%	1	2		2	0		8	1	
Messinia	5	7	40.0%	3	1		0	0		4	7	
<b>Voreio Aigaio (North Aegean)</b>	<b>6</b>	<b>7</b>	<b>16.7%</b>	<b>1</b>	<b>1</b>	<b>0.0%</b>	<b>2</b>	<b>0</b>	<b>-100.0%</b>	<b>3</b>	<b>7</b>	<b>133.3%</b>
Lesvos	2	3	50.0%	0	1		1	0		1	2	
Samos	1	1	0.0%	1	0		0	0		0	2	
Chios	3	3	0.0%	0	0		1	0		2	3	
<b>Notio Aigaio (South Aegean)</b>	<b>16</b>	<b>15</b>	<b>-6.3%</b>	<b>2</b>	<b>2</b>	<b>0.0%</b>	<b>4</b>	<b>2</b>	<b>-50.0%</b>	<b>14</b>	<b>14</b>	<b>0.0%</b>
Dodekanissos	12	9	-25.0%	2	2		3	1		9	6	
Kyklades	4	6	50.0%	0	0		1	1		5	8	
<b>Kriti (Crete)</b>	<b>9</b>	<b>8</b>	<b>-11.1%</b>	<b>1</b>	<b>3</b>	<b>200.0%</b>	<b>3</b>	<b>2</b>	<b>-33.3%</b>	<b>12</b>	<b>3</b>	<b>-75.0%</b>
Iraklio	7	4	-42.9%	0	2		2	1		10	1	
Lassithi	0	0	-	0	0		0	0		0	0	
Rethymno	0	0	-	0	0		0	0		0	0	
Chania	2	4	100.0%	1	1		1	1		2	2	

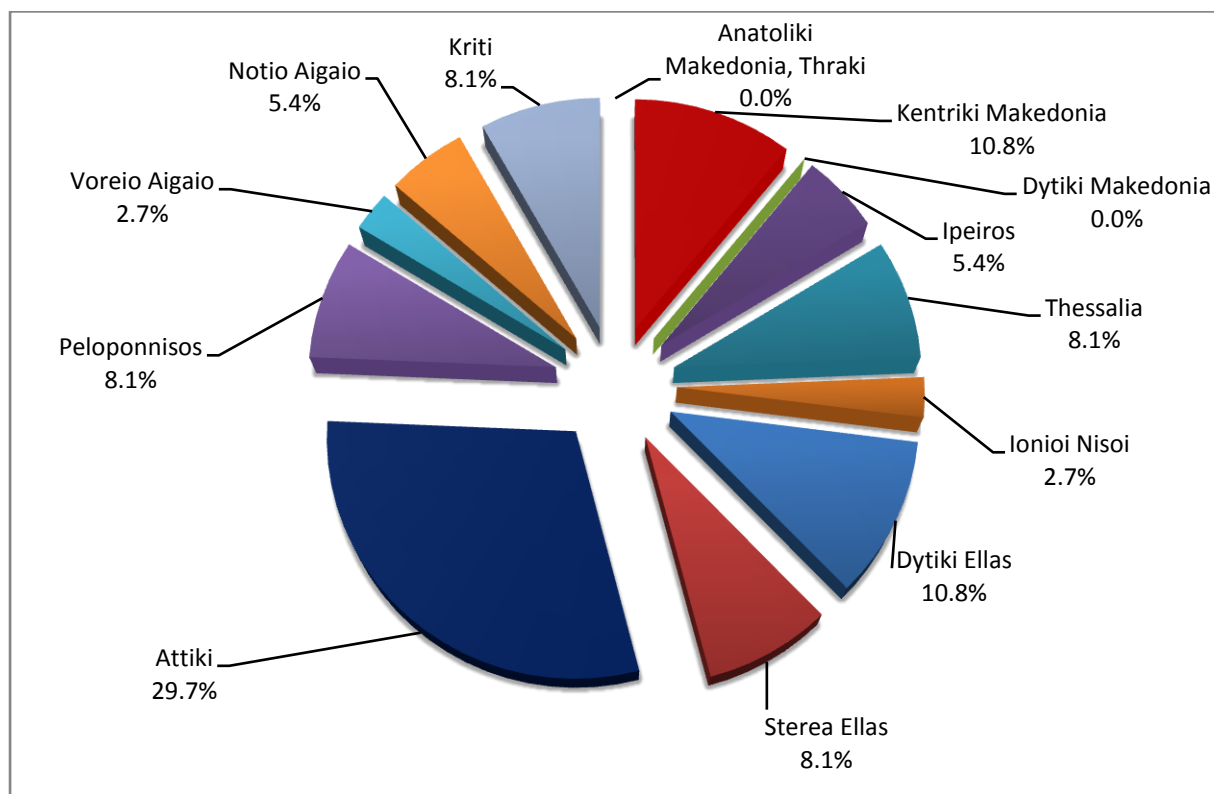
\* Provisional data

**Graph 3: Road traffic accidents by region,  
February 2018 \***



\* Provisional data

**Graph 4: Fatalities by region,  
February 2018 \***



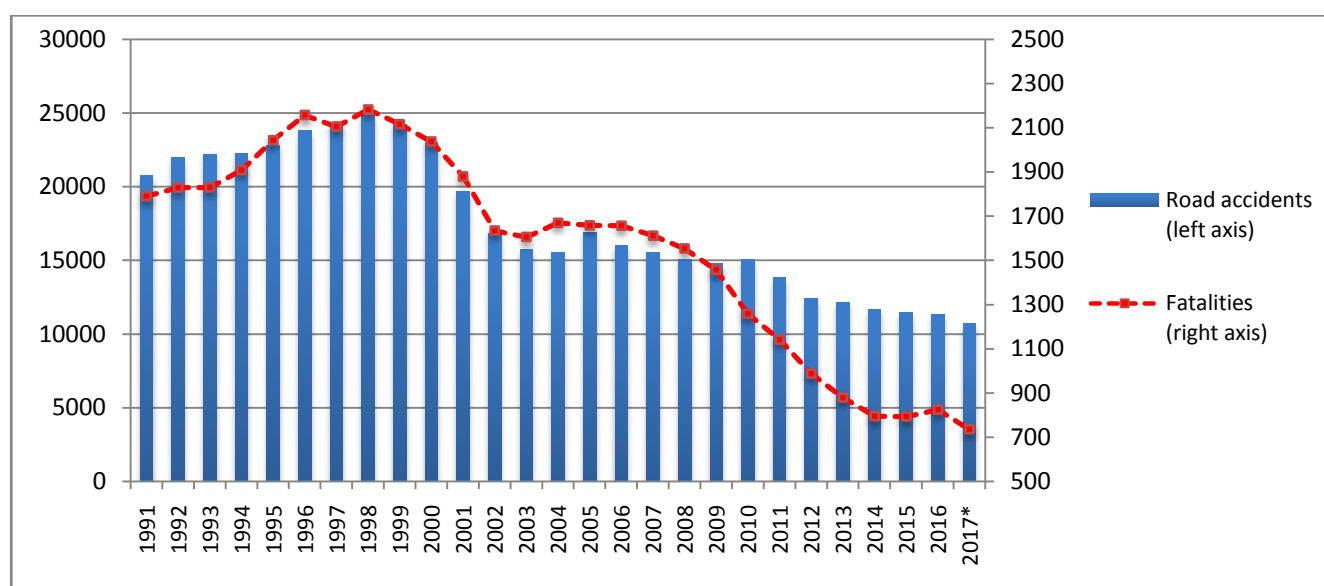
\* Provisional data

**Table 3: Road Traffic Accidents and casualties for the period January - February 2016, 2017 and 2018\***

	2016		2017		2018 *
	January - February	Total year	January - February	Total year*	January - February
<b>Road Accidents</b>	1,579	<b>11,318</b>	1,386	<b>10,696</b>	1,437
<b>Annual Change (%)</b>			-12.2%	-5.5%	3.7%
<b>Fatalities</b>	121	<b>824</b>	110	<b>735</b>	75
<b>Annual Change (%)</b>			-9.1%	-10.8%	-31.8%
<b>Serious injuries</b>	125	<b>879</b>	81	<b>703</b>	86
<b>Annual Change (%)</b>			-35.2%	-20.0%	6.2%
<b>Slight injuries</b>	1,752	<b>12,946</b>	1,600	<b>12,157</b>	1,599
<b>Annual Change (%)</b>			-8.7%	-6.1%	-0.1%

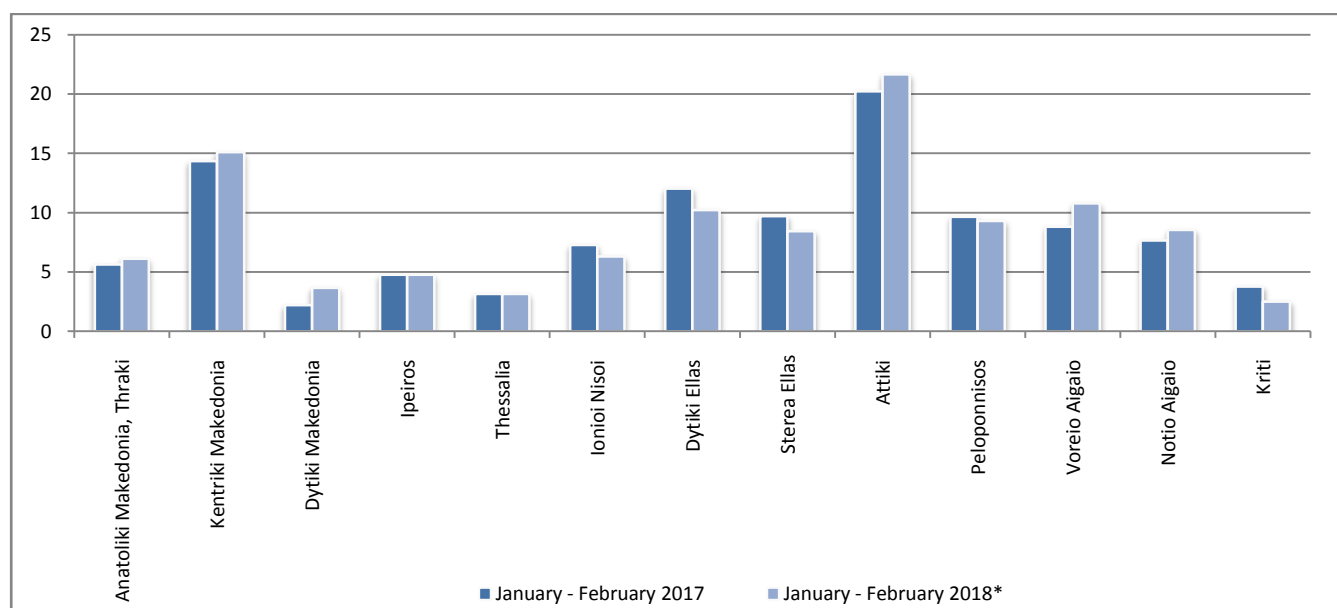
\* Provisional data

**Graph 5: Total Road traffic accidents and fatalities, 1991-2017\***



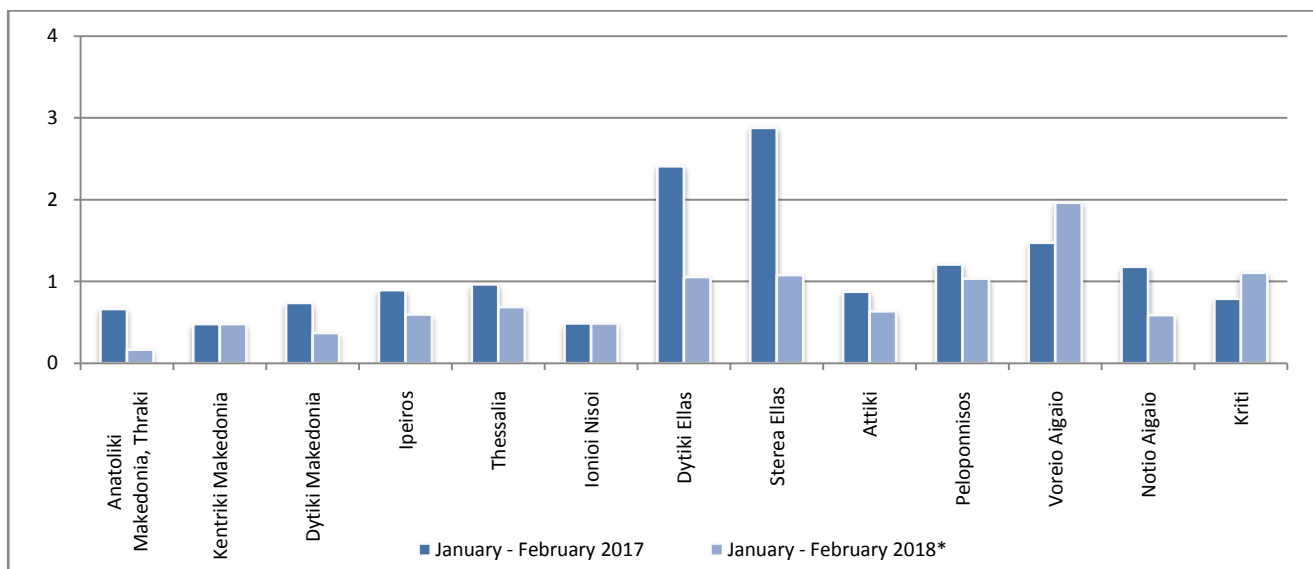
\* Provisional data: May 17 – Dec 17

**Graph 6: Road accidents per 100,000 inhabitants**

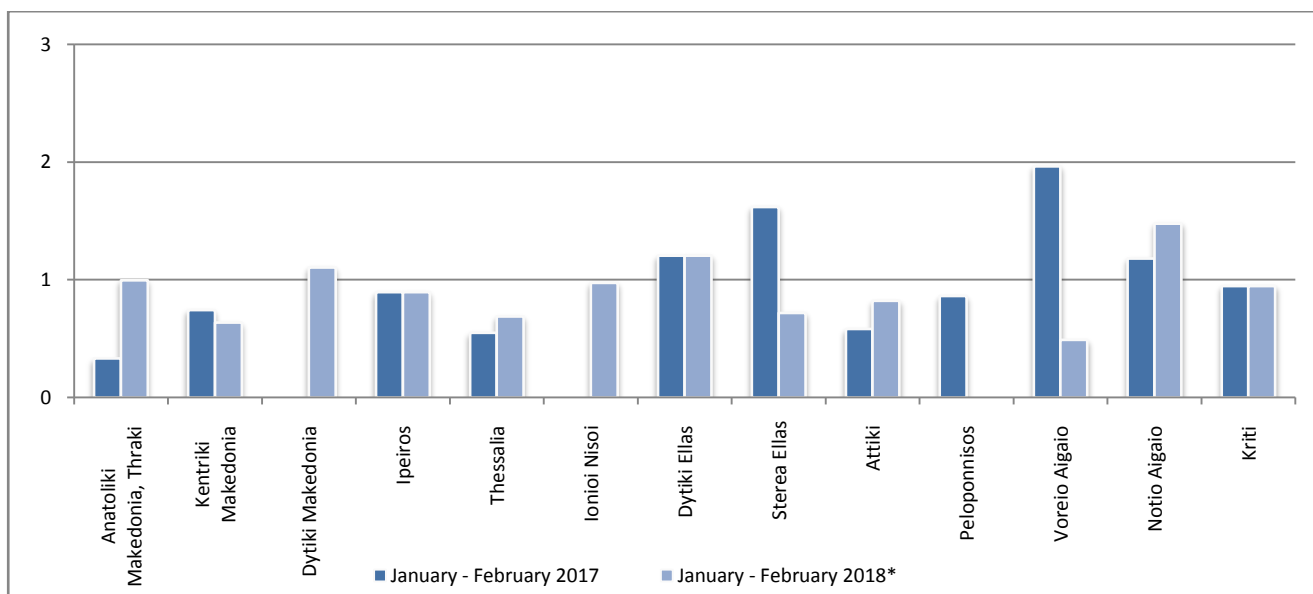


\* Provisional data

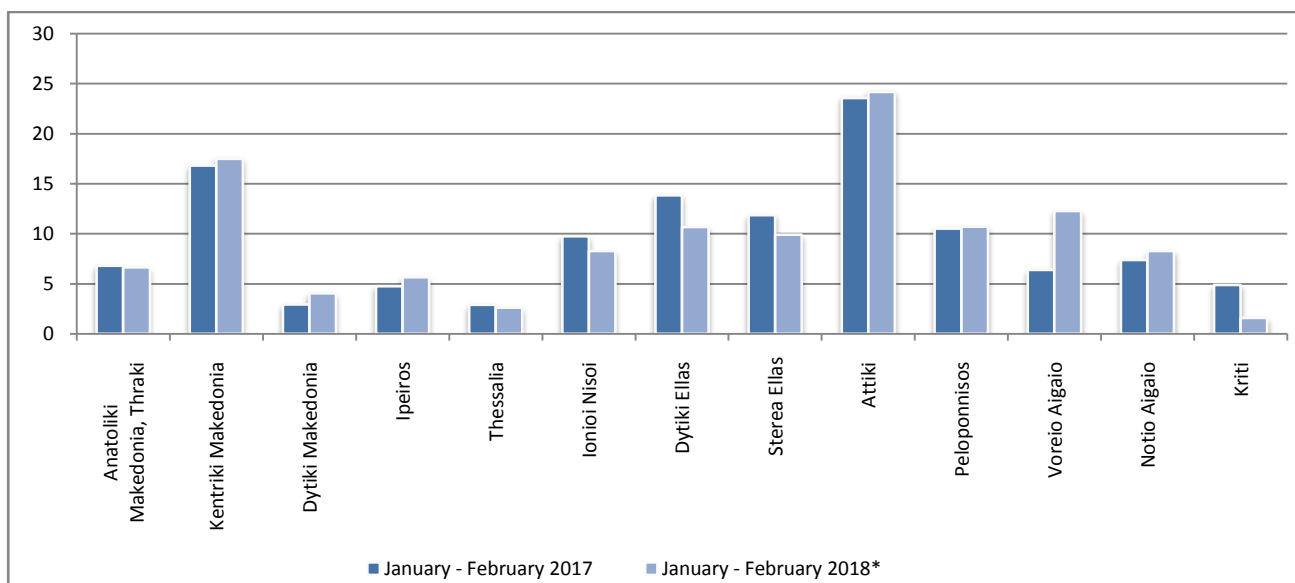
**Graph 7: Fatalities per 100,000 inhabitants**



**Graph 8: Serious injuries per 100,000 inhabitants**



**Graph 9: Slight injuries per 100,000 inhabitants**



\* Provisional data

## Explanatory Notes

<b>Survey on Road Accidents</b>	<p>The survey on road accidents is conducted on a monthly basis and it records, for each department of Greece and for each month separately, the number of accidents resulting in death or injury, as well as the number of persons injured by categories (drivers, passengers, pedestrians).</p> <p>On a yearly basis, road accidents are further analyzed. The competent agencies for filling in/collecting the forms on road accidents are the local Police Authorities and the local Port Authorities of Greece.</p> <p>The lower level of analysis for the place where an injury road accident occurred is the Municipal – Local Commune, which is described by a 8-digit geographic code. Data are collected on a monthly basis. The main variables are the following: place of accident, kind of road, casualties, conditions of road surface and type of road.</p>
<b>Legal basis</b>	<p>The Survey on Road Traffic Accidents is governed by Council Decision 93/704 of the European Community.</p>
<b>Reference Period</b>	<p>Monthly.</p>
<b>Availability of Data</b>	<p>Provisional data are available 2 months after the reference month.</p> <p>Final data are available 10 months after the reference year.</p>
<b>National Definitions</b>	<p><b>Road accident</b> (injury accident): Any accident involving at least one road motor vehicle in motion on a public road or square to which the public has access (excluding yards, industrial sites or vehicle depot of public transport enterprises), resulting in at least one injured or killed person. Accidents with only material damages are not included.</p> <p><b>Fatality (Death):</b> Any person killed immediately or dying within 30 days as a result of an injury accident (This national definition applies since 01.01.1996)</p> <p><b>Person injured:</b> Any person who sustained an injury as result of an injury accident, and who normally needs medical treatment.</p> <p><b>Serious injury:</b> Any person who sustained an injury as result of an injury accident, such as brain damages, mutilation, multiple injuries, which may result in lack of awareness or which are life-threatening.</p> <p><b>Slight injury:</b> Any person injured who sustained minor and not life-threatening injuries.</p> <p><b>Vehicle:</b> Include motor vehicles, trolleybuses, motorcycles, bicycles, motorbikes, agricultural and road making machines, animal and hand-drawn vehicles. Railway vehicles are excluded, unless the road accident involves at least one of the aforementioned types of vehicles and therefore, railway vehicles are considered vehicles.</p>
<b>Methodology</b>	<p>The forms of the survey are filled in by the local Police Authorities and the local Port Authorities as well.</p>
<b>References</b>	<p>More information about road accidents is available on ELSTAT's website and more specifically at the link: <a href="http://www.statistics.gr">www.statistics.gr</a> &gt; Population &amp; Social Conditions &gt; Accidents &gt; Road Traffic Accidents.</p> <p>It should be noted that previous press releases and time series are available on ELSTAT's website: <a href="http://www.statistics.gr">www.statistics.gr</a></p>