



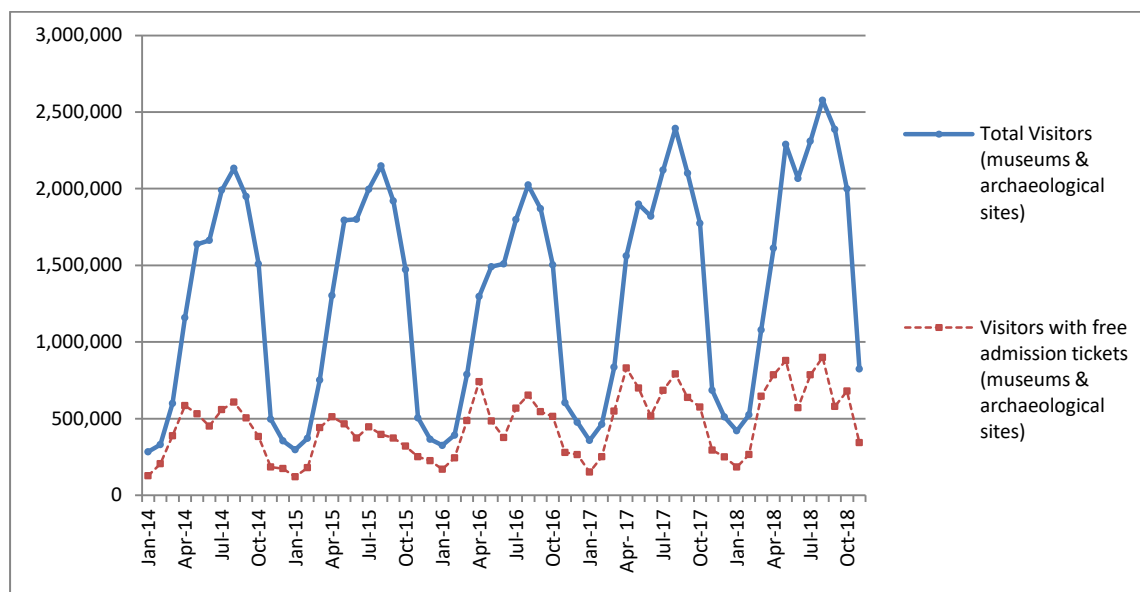
PRESS RELEASE

SURVEY ON MUSEUMS AND ARCHAEOLOGICAL SITES ATTENDANCE NOVEMBER 2018

The Hellenic Statistical Authority (ELSTAT) announces the results of the *Survey on Museums and Archaeological Sites Attendance* for November 2018. More specifically:

- In November 2018 compared with the corresponding month of 2017, Museums experienced a 17.7% increase in the number of visitors and a 18.6% increase in the number of free admission visitors as well as a 24.1% increase in their receipts (Table 1),
- In November 2018 compared with the corresponding month of 2017, the number of visitors at Archaeological sites recorded an increase of 22.0%, while an increase of 14.9% was observed in the number of free admission visitors and a 25.4% increase in the corresponding receipts (Table 1),
- During the eleven-month period from January to November 2018, an increase of 9.6% was observed in the number of visitors of Museums, while an increase of 7.4% was recorded in the number of free admission visitors and a 12.5% increase in the relevant receipts, in comparison with the corresponding period of 2017 (Table 2),
- As regards Archaeological sites, during the eleven-month period from January to November 2018, an increase of 13.8% was recorded in the number of visitors, while a 15.3% increase was observed in the number of free admission visitors and a 12.4% increase in the relevant receipts, in comparison with the corresponding period of 2017 (Table 2),

Graph 1: Visitors of Museums and Archaeological sites (Jan 2014 – Nov 2018)



Information:

Social Statistics Division

Section of Culture and Sports statistics,

Argyri Pateraki (Tel: +30 213 1352129, e-mail: ar.pateraki@statistics.gr)

**TABLE 1: VISITORS OF MUSEUMS AND ARCHAEOLOGICAL SITES - TOTAL RECEIPTS
(NOVEMBER 2017 & NOVEMBER 2018)**

I. VISITORS			
Museums and Archaeological sites	2017	2018	Change 2018/2017
Total number of visitors (A+B)	685,149	824,129	20.3%
A, Museums (C+E)	269,242	316,785	17.7%
Acropolis Museum	93,482	104,486	11.8%
National Archaeological	31,477	38,341	21.8%
Ancient Olympia	4,296	5,521	28.5%
Palace of the Grand Master (Rhodes)	6,660	7,463	12.1%
Herakleion Archaeological (Crete)	12,443	16,607	33.5%
White Tower	14,770	16,511	11.8%
Delphi	7,614	11,780	54.7%
Other museums	98,500	116,076	17.8%
B, Archaeological Sites (D+F)	415,907	507,344	22.0%
Epidavros ⁽¹⁾	13,353	16,156	21.0%
The Acropolis of Mycenae & Atreus' Treasure	13,478	16,516	22.5%
The Acropolis of Athens ⁽²⁾	150,312	176,807	17.6%
Sounio	11,988	13,832	15.4%
The Acropolis of Lindos	3,317	3,607	8.7%
Royal Tombs of Vergina	7,853	9,543	21.5%
Ancient Olympia	13,783	21,064	52.8%
Knossos (Crete)	14,033	22,761	62.2%
Phaistos (Crete)	8,023	10,342	28.9%
Ancient Korinthos ⁽¹⁾	6,722	9,906	47.4%
Mystras ⁽¹⁾	3,889	4,300	10.6%
Delphi	13,870	15,053	8.5%
Other archaeological sites	155,286	187,457	20.7%
II, VISITORS WHO PAID TICKET			
	2017	2018	Change 2018/2017
Total number of visitors who paid ticket (C+D)	390,310	480,429	23.1%
C, Museums	134,266	156,734	16.7%
D, Archaeological sites	256,044	323,695	26.4%
III, VISITORS WITH FREE ADMISSION TICKETS			
	2017	2018	Change 2018/2017
Total number of visitors with free admission ticket (E+F)	294,839	343,700	16.6%
E, Museums	134,976	160,051	18.6%
F, Archaeological sites	159,863	183,649	14.9%
IV, RECEIPTS (euros)			
	2017	2018	Change 2018/2017
Total Receipts (G+H)	2,475,366,00	3,096,447,00	25.1%
G, Museums	554,442.00	688,322.00	24.1%
H, Archaeological sites	1,920,924.00	2,408,125.00	25.4%

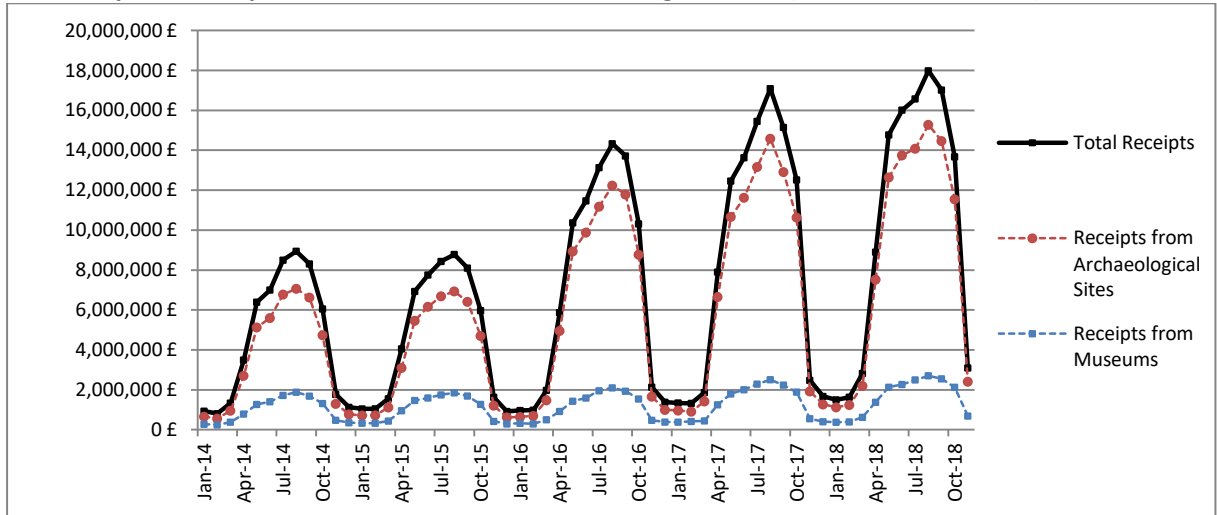
⁽¹⁾ Flat rate ticket, valid both for the museum and the archaeological site,

⁽²⁾ From May 2017 onwards, the data for the number of tickets in the archaeological site of the Acropolis of Athens include the tickets of the Ancient Theatre of Dionysos,

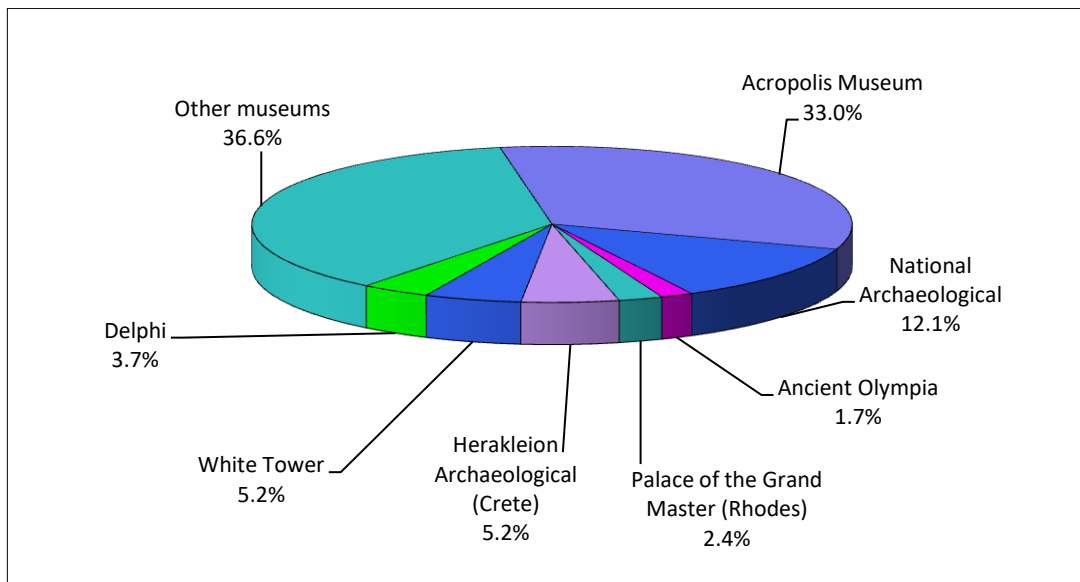
⁽³⁾ The data referring to the number of tickets for the archaeological sites of the Acropolis of Lindos for November 2018 are provisional and are based on estimation,

The following graphs depict the evolution of the receipts (Graph 2), as well as the number of visitors by Museum and Archaeological Site (Graphs 3 and 4, respectively),

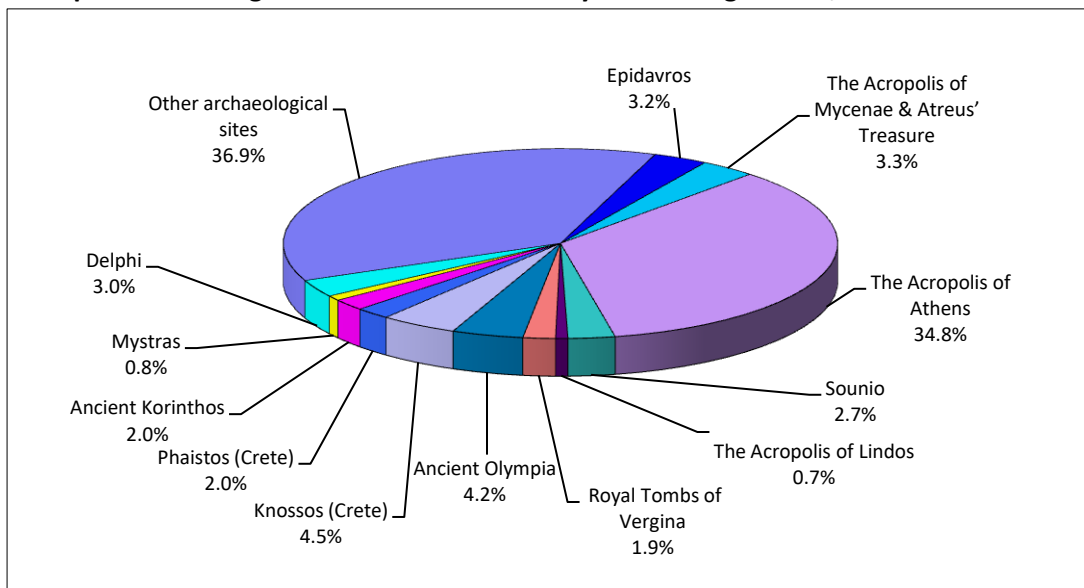
Graph 2: Receipts from Museums and Archaeological Sites (Jan 2014- Nov 2018)



Graph 3: Percentage distribution of Visitors by Museum, November 2018



Graph 4: Percentage distribution of Visitors by Archaeological site, November 2018



**TABLE 2: VISITORS OF MUSEUMS AND ARCHAEOLOGICAL SITES - TOTAL RECEIPTS
(2016, 2017 AND JANUARY- NOVEMBER 2017 & 2018)**

I, VISITORS					
Museums and Archaeological sites	2016	2017	JANUARY-NOVEMBER		change
			2017	2018	2018/2017
Total number of visitors (A+B)	14,080,639	16,524,557	16,013,181	18,007,167	12.5%
A, Museums (C+E)	4,515,966	5,191,781	4,967,807	5,442,311	9.6%
Acropolis Museum	1,406,096	1,593,362	1,521,519	1,690,013	11.1%
National Archaeological	447,093	545,555	520,756	563,085	8.1%
Ancient Olympia	124,136	145,118	142,137	153,453	8.0%
Palace of the Grand Master (Rhodes)	237,361	235,413	234,239	240,461	2.7%
Herakleion Archaeological (Crete)	394,915	426,191	417,103	545,870	30.9%
White Tower	290,192	268,149	251,002	206,067	-17.9%
Delphi	166,091	211,827	204,560	241,332	18.0%
Other museums	1,450,082	1,766,166	1,676,491	1,802,030	7.5%
B, Archaeological Sites (D+F)	9,564,673	11,332,776	11,045,374	12,564,856	13.8%
Epidavros ⁽¹⁾	375,437	469,060	459,598	539,553	17.4%
The Acropolis of Mycenae & Atreus' Treasure	342,854	412,397	402,791	486,641	20.8%
The Acropolis of Athens	1,807,580	2,766,218	2,660,709	3,034,843	14.1%
Sounio	222,800	259,709	249,715	296,206	18.6%
The Acropolis of Lindos	421,070	441,012	440,660	488,480	10.9%
Royal Tombs of Vergina	186,627	203,632	187,480	205,992	9.9%
Ancient Olympia	423,424	481,252	471,848	475,911	0.9%
Knossos (Crete)	611,455	634,710	626,152	837,462	33.7%
Phaistos (Crete)	77,071	95,182	91,209	128,488	40.9%
Ancient Korinthos ⁽¹⁾	153,307	191,836	188,282	193,248	2.6%
Mystras ⁽¹⁾	114,293	125,549	123,554	143,222	15.9%
Delphi	290,705	345,804	333,988	392,697	17.6%
Other archaeological sites	4,538,050	4,906,415	4,809,388	5,342,113	11.1%
II, VISITORS WHO PAID TICKET					
	2016	2017	JANUARY-NOVEMBER		change
			2017	2018	2018/2017
Total number of visitors who paid ticket (C+D)	8,749,957	10,288,448	10,027,641	11,280,685	12.5%
C, Museums	2,406,665	2,831,466	2,734,934	3,044,016	11.3%
D, Archaeological sites	6,343,292	7,456,982	7,292,707	8,236,669	12.9%
III, VISITORS WITH FREE ADMISSION TICKETS					
	2016	2017	JANUARY-NOVEMBER		change
			2017	2018	2017/2016
Total number of visitors with free admission ticket (E+F)	5,330,682	6,236,109	5,985,540	6,726,482	12.4%
E, Museums	2,109,301	2,360,315	2,232,873	2,398,295	7.4%
F, Archaeological sites	3,221,381	3,875,794	3,752,667	4,328,187	15.3%
IV, RECEIPTS (euros)					
	2016	2017	JANUARY-NOVEMBER		change
			2017	2018	2017/2016
Total Receipts (G+H)	86,647,638.00	102,887,879.00	101,217,906.00	113,819,898.00	12.5%
G, Museums	13,448,464.00	16,175,121.00	15,772,153.00	17,747,691.00	12.5%
H, Archaeological sites	73,199,174.00	86,712,758.00	85,445,753.00	96,072,207.00	12.4%

⁽¹⁾ Flat rate ticket, valid both for the museum and the archaeological site,

⁽²⁾ From May 2017 onwards, the data for the number of tickets in the archaeological site of the Acropolis of Athens include the tickets of the Ancient Theatre of Dionysos,

⁽³⁾ The data on the number of visitors to the archaeological site of the Acropolis of Mycenae & Atreus' Treasure for May 2017 have been revised

⁽⁴⁾ The data referring to the number of tickets for the archaeological sites of the Acropolis of Athens and Sounio for September 2018, that were estimated have been revised due to the provision of new data from the Archaeological Receipts Fund (ARF)

EXPLANATORY NOTES

Survey on Museums and Archaeological Sites Attendance	The Survey on Museums and Archaeological Sites Attendance has been producing results since 1970, The survey collects data from the Archaeological Receipts Fund (ARF) of the Ministry of Culture and Sports concerning the number of visitors and the receipts from the tickets sold in the Museums and Archaeological sites of the country, The corresponding data for the Acropolis Museum are available from December 2009 onwards,
Legal Framework	The survey is conducted since 1970 on a regular basis and it produces results on a monthly and yearly basis, in compliance with the Joint Ministerial Decision 15189/B379/73,
Reference Period	01/11/2018 to 30/11/2018,
Methodology and Definitions	The Survey is conducted on a monthly basis from data collected from the Archaeological Receipts Fund (ARF) of the Ministry of Culture and Sports concerning on the number of visitors and the receipts from the tickets sold in the Museums and Archaeological sites of the country, ELSTAT tabulates the data on Museums and the Archaeological sites for the whole of the Country, by month and by year,

Information on ticket payment

- From January 2002 onwards, the number of Museums' visitors includes both the visitors who have bought a ticket and the visitors with free admission ticket, From 16-06-1996 onwards, the Museums and the Archaeological sites all over Greece have a paid admission for all the visitors, Greeks and foreigners, all over the year, except in the following days, which are free admission days:
- National Holidays (25th of March and 28th of October)
- The first Sunday every month during the five month period from 1 November to 31 March
- The 6th of March (in memory of Melina Merkouri)
- The 18th of April (International Monuments Day)
- The 18th of May (International Museums Day)
- The 5th of June (International Environment Day)
- The last weekend of September, annually (European Heritage Days)

Free admission tickets

The admission to Museums and Archaeological site is free for:

- Young people from EU-countries aged under 18 years, with current identification card to confirm their age,
- Students of Universities and of Higher and Technical Education Institutions or equivalent institutions of EU-countries, as well as of Tour Guide Training Institutes, with valid student identification card or International Student Identity Card (ISIC)
- Employees of the Hellenic Ministry of Culture, with valid professional identity card
- ICOM and ICOMOS cardholders
- Tour Guides with their current working identification card from the Ministry of Development
- Teachers accompanying pupils and students on primary, secondary and tertiary education institution tours
- Journalists with valid journalists' identification card
- Members of Associations and Societies of Friends of Museums and Archaeological Sites
- Official guests of the Greek Government, after relevant approval
- Escorts of blind persons and persons with disabilities
- Free admission cardholders
- Holders of the Culture Card

Number of flat rate tickets

From April 1999 onwards, in some museums and the nearby archaeological sites, in addition to the ordinary ticket, a new "flat rate ticket" was established, which is valid for both the museum and the nearby archaeological site, The total number of these flat rate tickets for **November 2018** was **20,353**,

More information on the Survey on Museums and Archaeological Sites Attendance and detailed time series are available on: <http://www.statistics.gr/en/statistics/-/publication/SCI21/>-