



## PRESS RELEASE

### SURVEY ON SECONDARY VOCATIONAL EDUCATION END OF SCHOOL YEAR 2015/2016

The Hellenic Statistical Authority (ELSTAT) announces data on Secondary Vocational Education<sup>1</sup> deriving from the relevant survey for the end of the school year 2015/2016. The survey results can be summarized as follows:

- The **school units**, which were surveyed during the school year 2015/2016, amounted to 479 in comparison with 536 in the school year 2013/2014. This reduction is due to the fact that the school units that are run by the Ministries of Tourism and Health were upgraded to post-secondary school units (Table 2 and Graphs 2 and 3).
- **Teaching staff** numbered 13,102 persons during the school year 2015/2016 in comparison with 13,463 persons in the school year 2014/2015. This reduction is due to the aforementioned reduction in the number of the school units (Table 2 and Graphs 4 and 5).
- **The number of pupils enrolled** in the school year 2015/2016 amounted to 98,610, compared with 101,761 in the school year 2014/2015 (Table 3 and Graphs 6 and 7).
- **The number of graduates**, apart from SEK, was 25,009 pupils in the school year 2015/2016 in comparison with 29,992 pupils in the school year 2014/2015 (Table 3 and Graphs 8 and 9).
- **The ratio of teaching staff to pupils**, in the school year 2015/2016, was 1 teacher for 7.5 pupils, while in the school year 2014/2015 the corresponding ratio was 1 to 7.6 (Tables 2 and 3).
- The **Region of Attiki** in the school year 2015/2016, accounted for 27.2% of the total pupil population of all the EPAS, EPAL and SEK in Greece (Table 3 and Graph 7).

**Information:**

*Social Statistics Division*

*Education Statistics Section*

*Evdokia Oikonomou, Antonis Kritikos, Maria Kritikou*

Tel: +30 213 135 2134, +30 2131352778, +30 213 135 2782

Fax: +30 213 135 2780

e-mail: [evd.oikonomou@statistics.gr](mailto:evd.oikonomou@statistics.gr)

[a.kritikos@statistics.gr](mailto:a.kritikos@statistics.gr)

[m.kritikou@statistics.gr](mailto:m.kritikou@statistics.gr)

---

<sup>1</sup> Vocational Secondary Education in Greece includes: Vocational Upper Secondary Schools-EPAL, Vocational Schools – EPAS and Vocational Training Schools -SEK of all Ministries

More specifically, Table 1 and Graph 1 depict the evolution of pupil population in Secondary Vocational Education during the period 2005/2006 to 2015/2016.

**Table 1**  
**Evolution of pupil population in Secondary Vocational Education**  
**2006/07 – 2015/16**

School Year	Pupils Enrolled
2006/2007	110,622
2007/2008	108,729
2008/2009	108,010
2009/2010	110,771
2010/2011	113,658
2011/2012	121,008
2012/2013	123,989
2013/2014	109,917
2014/2015	101,761
2015/2016	98,610

**Graph 1**  
**Evolution of pupil population in Secondary Vocational Education**  
**2006/07 – 2015/16**

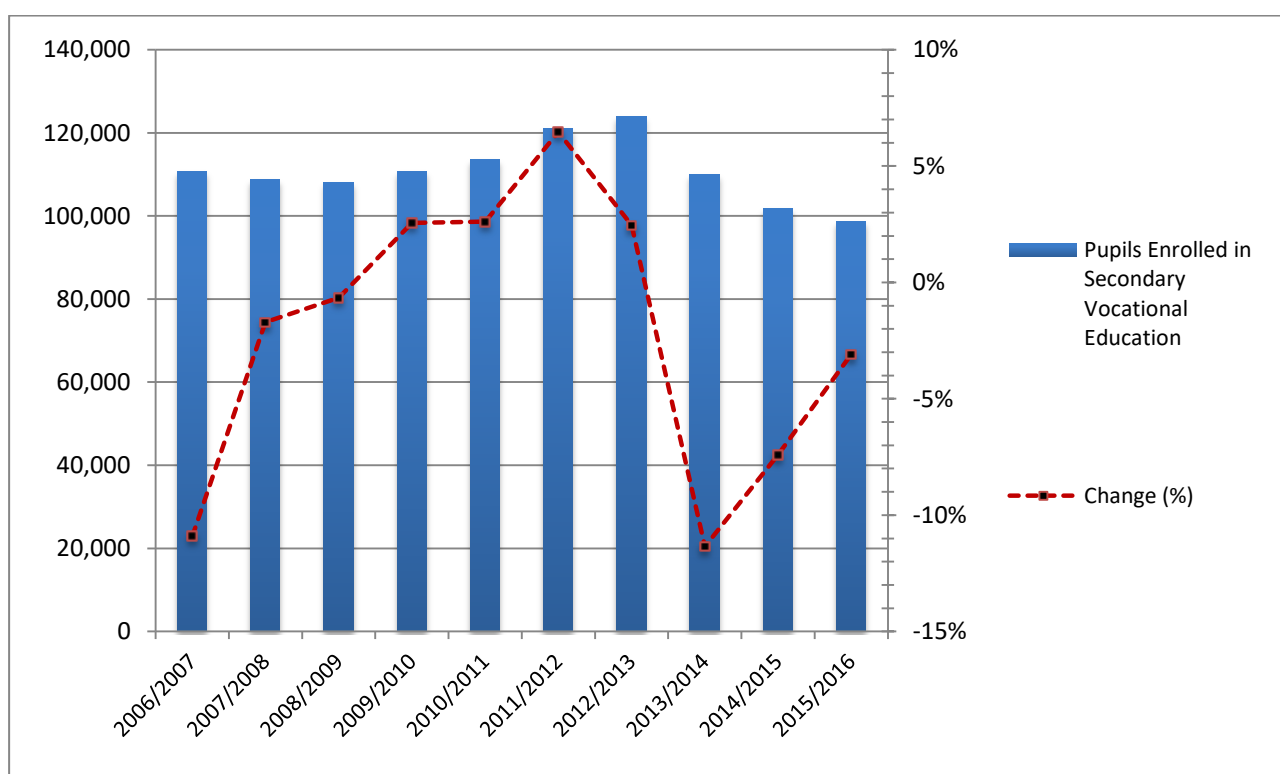


Table 2 presents data on the number of the school units and teaching staff for school years 2014/2015 and 2015/2016 .

**Table 2. Number of School Units and Teaching Staff<sup>2</sup>**

<i>By Type of School Unit</i>				
School Units	Number of School Units		Teaching Staff	
	2014/15	2015/16	2014/15	2015/16
EPAL and EPAS of the Ministry of Education, Research and Religious Affairs	399	398	11,484	11,465
EPAS of the Ministry of Labour, Social Security and Social Solidarity	51	51	1,654	1,491
EPAS of the Ministry of Rural Development and Food	6	6	51	58
EPAS of the Ministry of Tourism <sup>3</sup>	8		66	
EPAS of the Ministry of Health <sup>4</sup>	46		189	
SEK <sup>5</sup>	26	24	19	88
<b>TOTAL</b>	<b>536</b>	<b>479</b>	<b>13,463</b>	<b>13,102</b>
<i>By Region</i>				
Region (NUTS 2)	Number of School Units		Teaching Staff	
	2014/15	2015/16	2014/15	2015/16
<b>Anatoliki Makedonia, Thraki</b>	40	33	935	817
<b>Kentriki Makedonia</b>	79	72	2,654	2,440
<b>Dytiki Makedonia</b>	23	21	616	595
<b>Thessalia</b>	42	38	1,104	1,088
<b>Ipeiros</b>	23	20	511	489
<b>Ionia Nisia</b>	14	12	270	276
<b>Dytiki Ellada</b>	38	35	866	890
<b>Stereia Ellada</b>	29	26	630	611
<b>Peloponnisos</b>	34	31	730	670
<b>Attiki</b>	123	112	3,081	3,204
<b>Voreio Aigaio</b>	23	20	456	423
<b>Notio Aigaio</b>	31	27	658	636
<b>Kriti</b>	37	32	952	963
<b>TOTAL</b>	<b>536</b>	<b>479</b>	<b>13,463</b>	<b>13,102</b>

<sup>2</sup> Absent teachers are also included.

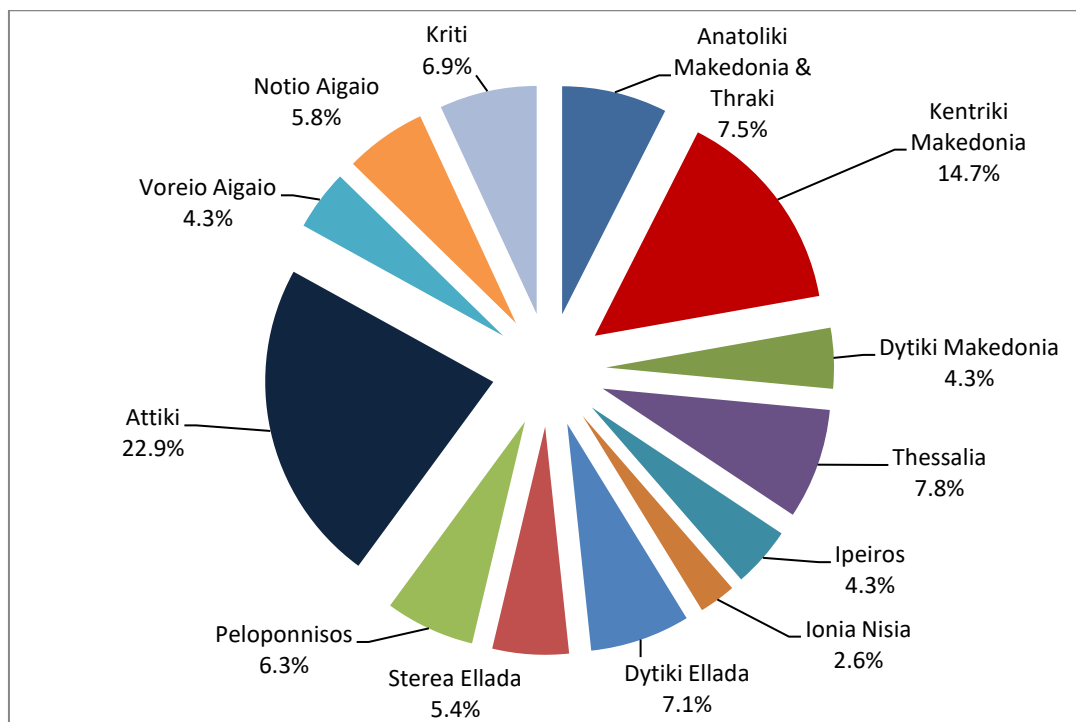
*Absent teachers* are the teachers with a fixed post in the school unit, who are absent for more than 20 days (due to illness, training, maternity leave, etc) and their replacement is pending, as well as the teachers who are seconded to other administrative posts of the Ministry of Education, Research and Religious Affairs or elsewhere.

<sup>3</sup> From school year 2015/2016, EPAS of the Ministry of Tourism were upgraded to post-secondary educational school units (IEK).

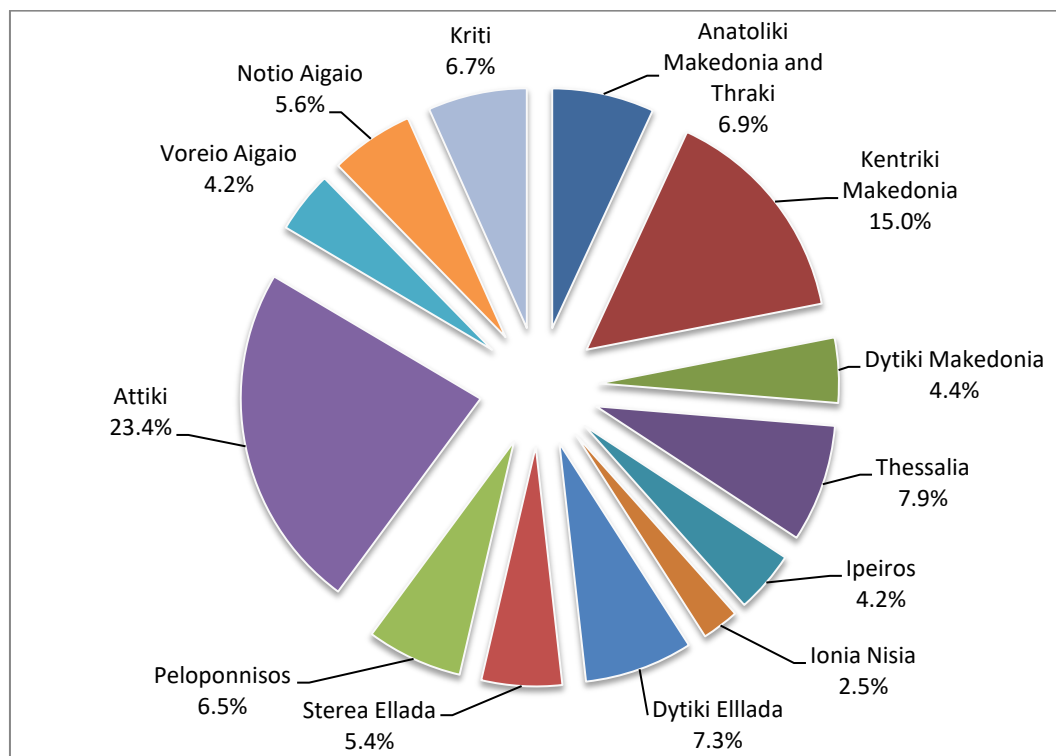
<sup>4</sup> From school year 2015/2016, EPAS of the Ministry of Health were upgraded to post-secondary educational school units (IEK).

<sup>5</sup> SEK belong to non formal education. They were established and operated for the first time in the school year 2014/2015 (by virtue of the Law 4186/2013). Two school units discontinued their operation in 2015/16. The increase in the number of the teaching staff is due to the employment of teachers with fixed short term contracts.

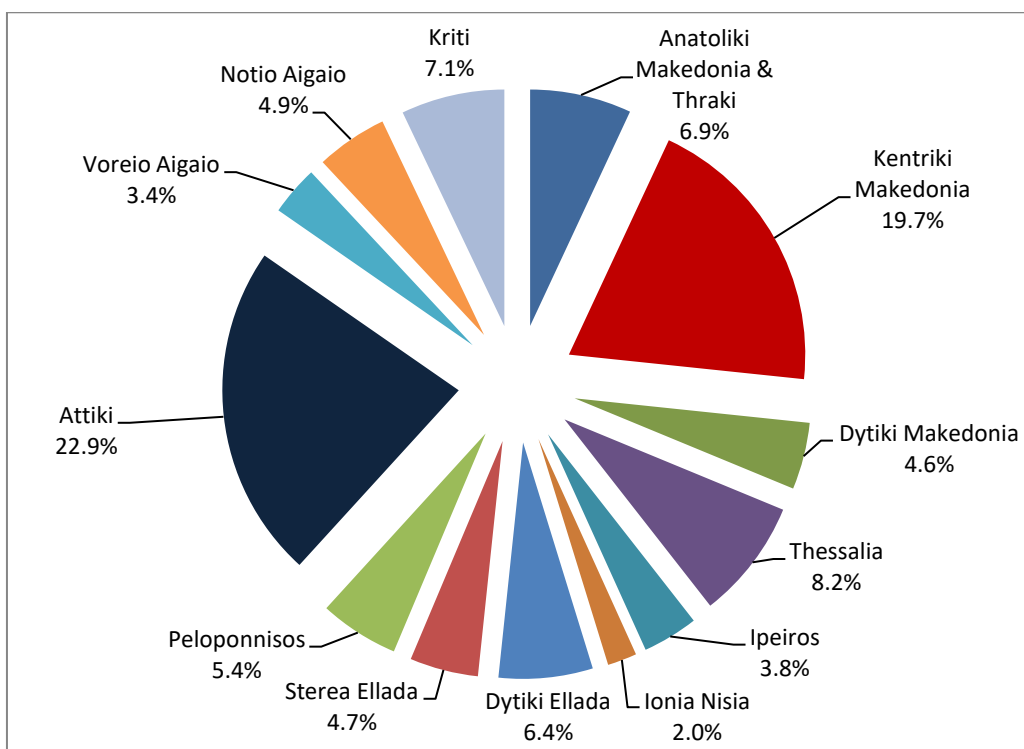
**Graph 2. Percentage distribution of School Units by NUTS 2 Region, school year 2014/15**



**Graph 3. Percentage distribution of School Units by NUTS 2 Region, school year 2015/16**



**Graph 4. Teaching Staff by NUTS 2 Region, school year 2014/15**



**Graph 5. Teaching Staff by NUTS 2 Region, school year 2015/16**

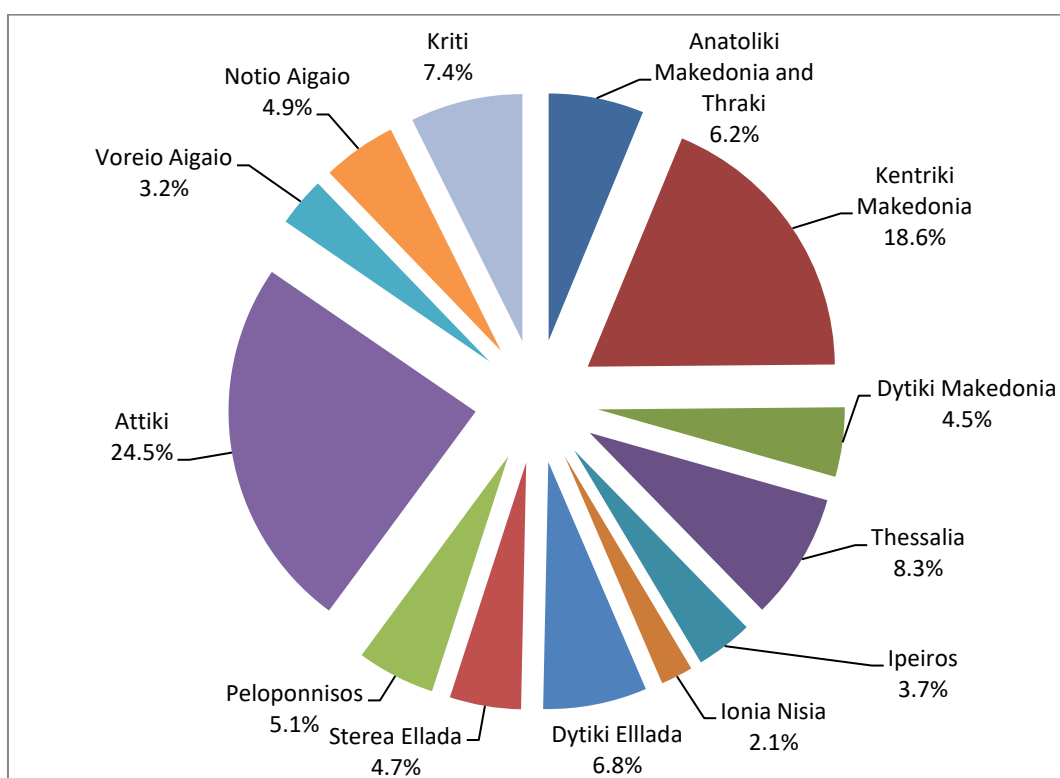


Table 3 presents data on the number of enrolled pupils and graduates for school years 2014/2015 and 2015/2016 are .

**Table 3. Pupils enrolled and graduates by Type of School Unit and Region**

<i>By Type of School Unit</i>				
School Units	Pupils Enrolled		Graduates	
	2014/15	2015/16	2014/15	2015/16
EPAL and EPAS of the Ministry of Education, Research and Religious Affairs	88,595	88,901	*23,378	21,525
EPAS of the Ministry of Labour, Social Security and Social Solidarity <sup>6</sup>	10,654	9,129	5,049	3,313
EPAS of the Ministry of Rural Development and Food	320	293	151	171
EPAS of the Ministry of Tourism <sup>7</sup>	469		468	
EPAS of the Ministry of Health <sup>8</sup>	998		946	
SEK <sup>9</sup>	725	287		
<b>TOTAL</b>	<b>101,761</b>	<b>98,610</b>	<b>*29,992</b>	<b>25,009</b>
<i>By Region</i>				
Region (NUTS 2)	Pupils Enrolled		Graduates	
	2014/15	2015/16	2014/15*	2015/16
<b>Anatoliki Makedonia, Thraki</b>	7,017	6,414	2,316	1,824
<b>Kentriki Makedonia</b>	19,789	19,645	5,834	4,875
<b>Dytiki Makedonia</b>	4,895	5,123	1,480	1,305
<b>Thessalia</b>	7,192	7,133	2,207	1,949
<b>Ipeiros</b>	2,854	2,859	975	804
<b>Ionia Nisia</b>	1,954	1,848	491	434
<b>Dytiki Ellada</b>	6,584	6,475	1,971	1,716
<b>Stereia Ellada</b>	4,382	4,032	1,363	1,121
<b>Peloponnisos</b>	4,746	4,547	1,375	1,262
<b>Attiki</b>	28,198	26,823	7,876	6,375
<b>Voreio Aigaio</b>	2,763	2,764	814	661
<b>Notio Aigaio</b>	4,037	3,713	1,248	993
<b>Kriti</b>	7,350	7,234	2,044	1,690
<b>TOTAL</b>	<b>101,761</b>	<b>98,610</b>	<b>29,992</b>	<b>25,009</b>

\*Revised data.

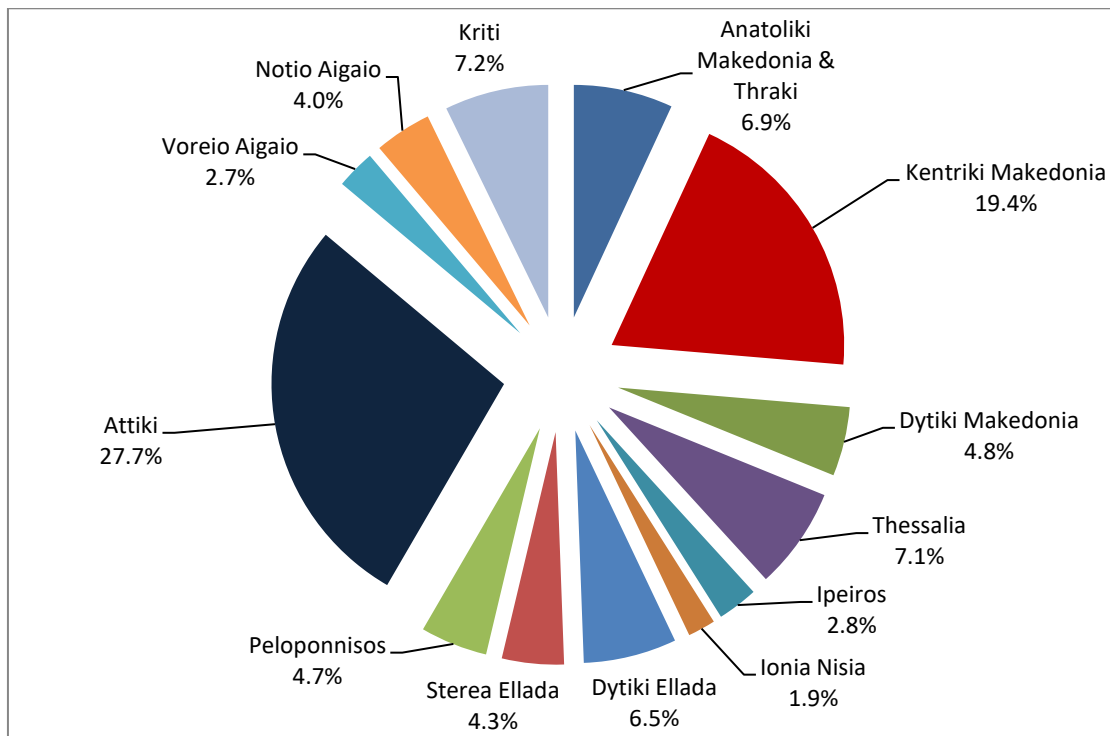
<sup>6</sup> The reduction in the number of enrolled pupils is due to the transfer of pupils from EPAS to SEK, as well as to the decrease in the number of applications on new enrollments.

<sup>7</sup> As regards the EPAS of the Ministry of Tourism, the number of pupils enrolled refers only to the second grade.

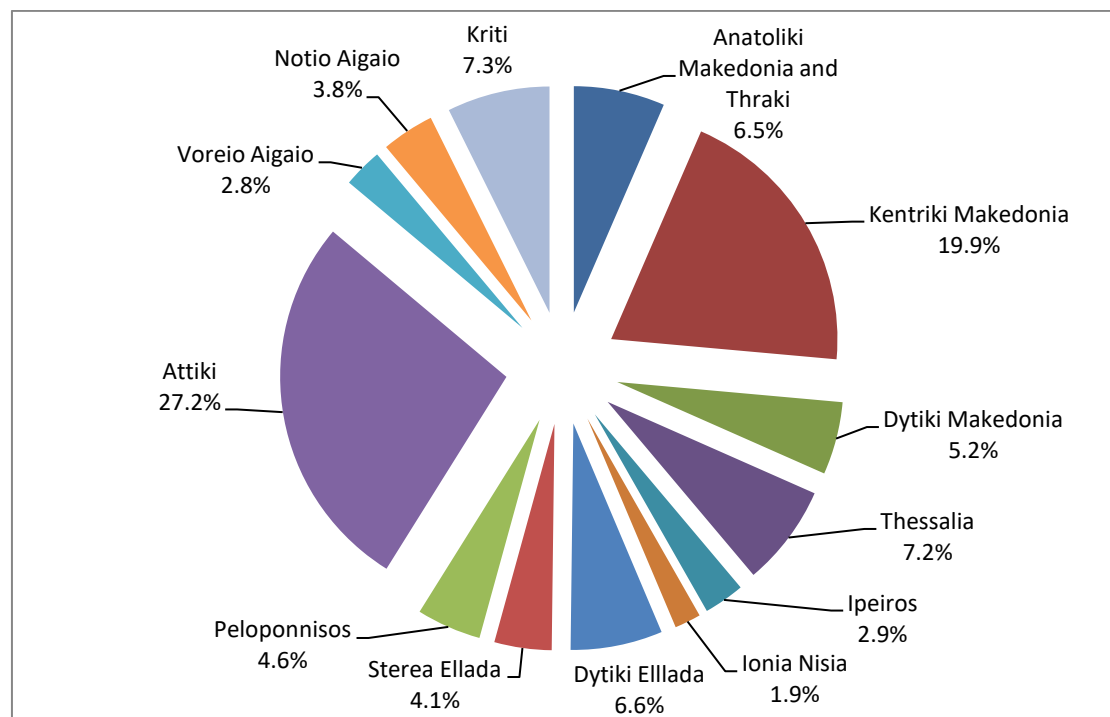
<sup>8</sup> As regards the EPAS of the Ministry of Health, the number of pupils enrolled refers only to the second grade.

<sup>9</sup> The reduction of pupils is due to the imminent abolition of SEK. Therefore, there are no new enrolment, while many pupils that had finished the 1<sup>st</sup> grade, decided to continue their studies in EPAS or EPAL. Furthermore, there are no graduates, since SEK started their operation in 2014/15 and the duration of studies is two years plus one year of apprenticeship.

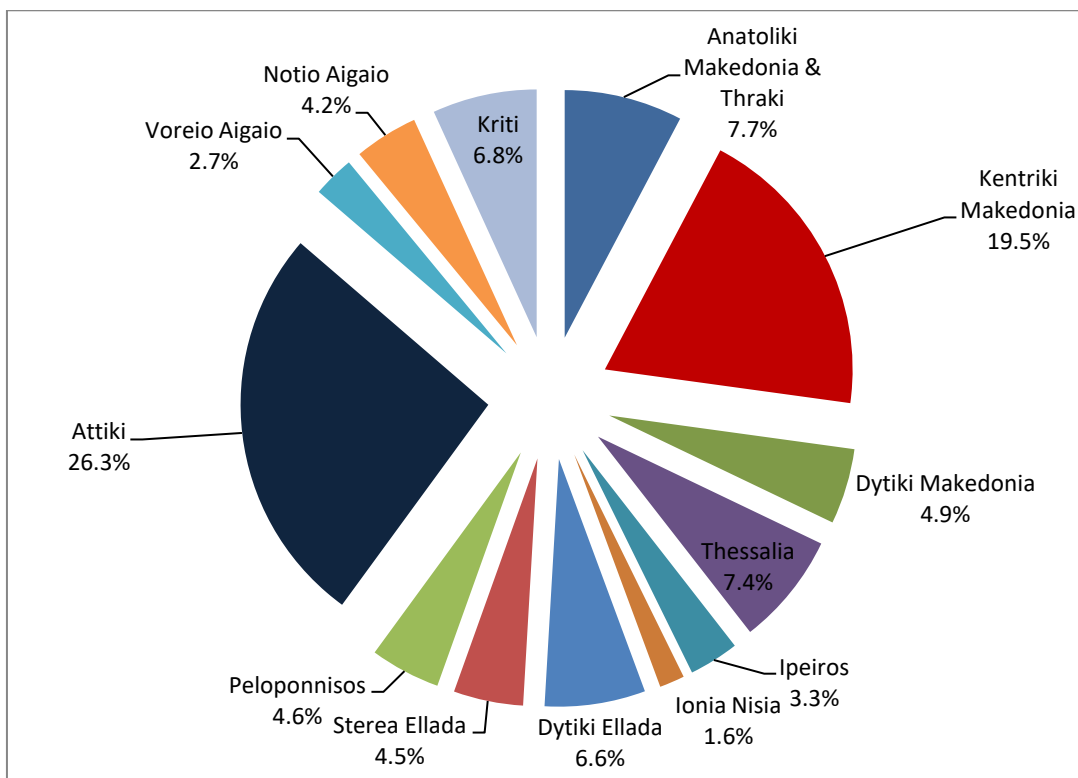
**Chart 6. Pupils Enrolled by NUTS 2 Region, school year 2014/15**



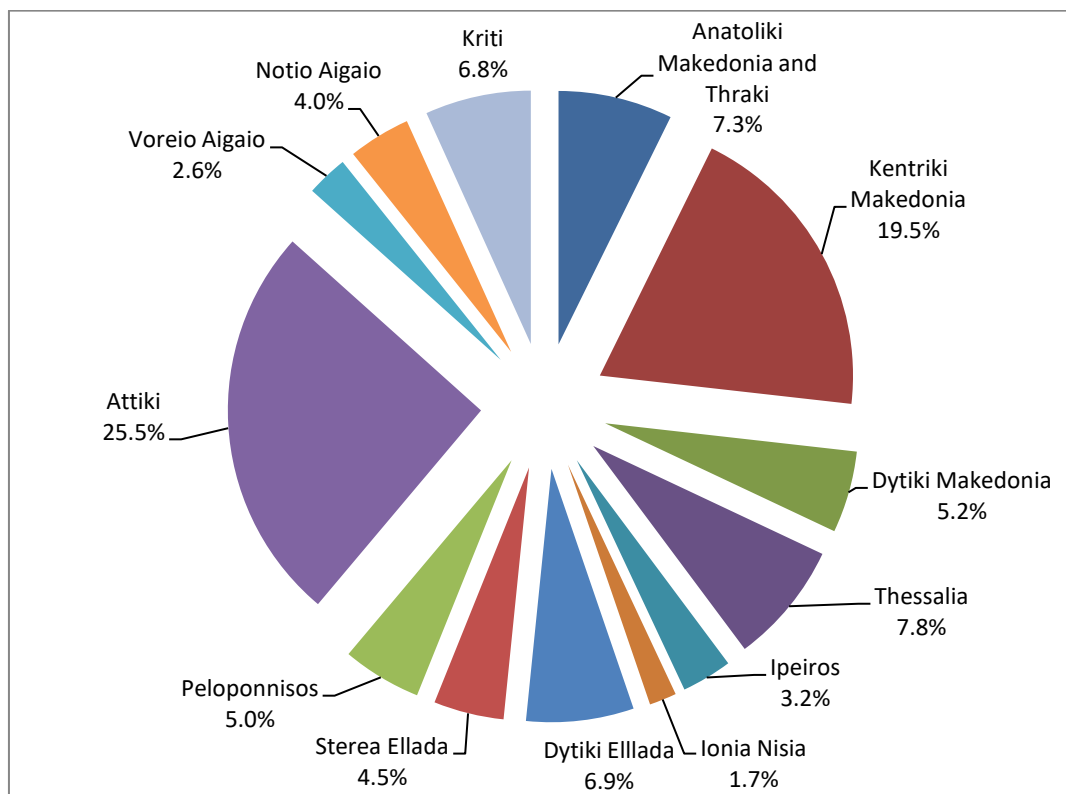
**Chart 7. Pupils Enrolled by NUTS 2 Region, school year 2015/16**



**Chart 8. Graduates by NUTS 2 Region, school year 2014/15**



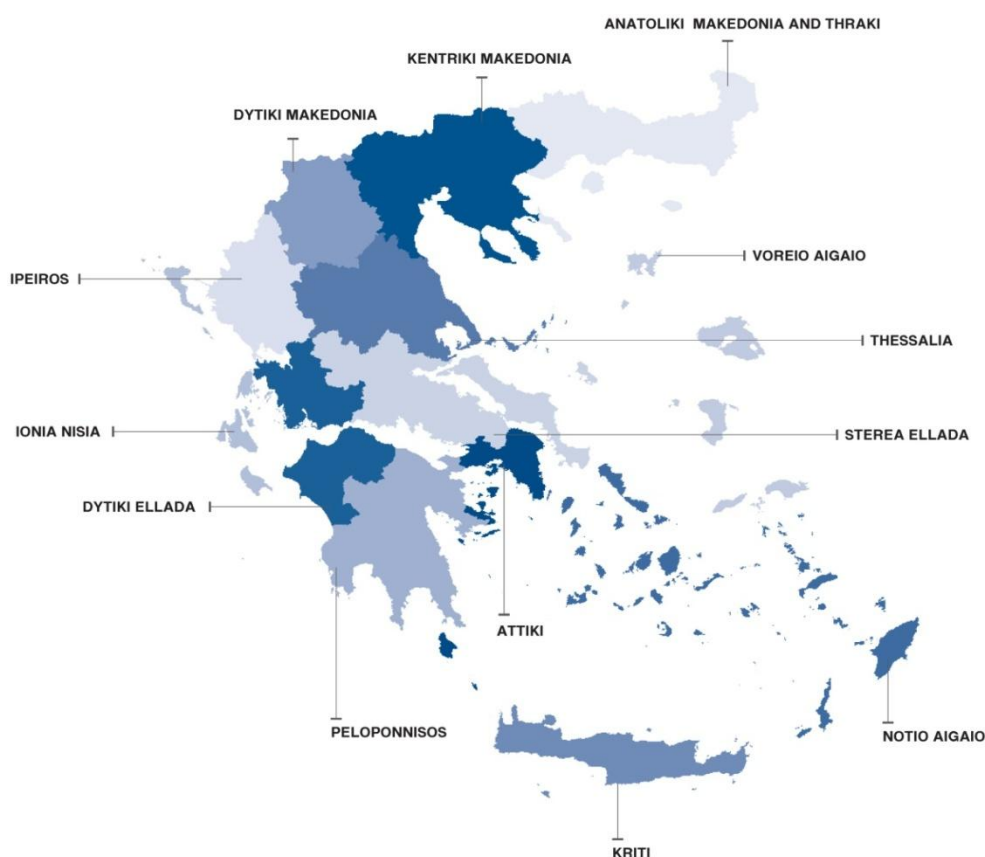
**Chart 9. Graduates by NUTS 2 Region, school year 2015/16**



## EXPLANATORY NOTES

<b>Survey on Secondary Vocational Education</b>	<p>Secondary Vocational Education (formal and non formal) includes:</p> <ul style="list-style-type: none"> <li>- the Vocational Upper Secondary Schools (EPAL)</li> <li>- the Vocational Schools (EPAS) and</li> <li>- the Vocational Training Schools (SEK, started their operation from the school year 2014/2015 – Law 4186/2013)</li> </ul> <p>EPAL, EPAS and SEK are under the competency of the Ministry of Education, Research and Religious Affairs, the Ministry of Rural Development and Food, the Ministry of Health, the Ministry of Labour, Social Security and Social Solidarity and by the Ministry of Tourism. Since the school year 2014/2015, public EPAS of the Ministry of Education, Research and Religious Affairs were abolished, while private EPAS under the supervision of the Ministry of Education, Research and Religious Affairs are still under operation.</p> <p>The survey is conducted on a yearly basis, by all Member States of the European Union, aiming at collecting data on the number of pupils enrolled, the school units and the number of the teaching staff.</p>
<b>Legal Frame</b>	The surveys are conducted by virtue of Regulations (EU) No 452/2008 and 912/2013 of the European Parliament and of the Council.
<b>Statistical Units</b>	The statistical units are the school units.
<b>Coverage</b>	Greece total.
<b>Geographical Classification</b>	The geographical classification is based on Nomenclature of Territorial Units for Statistics.

**Map of the 13 Regions (NUTS 2) of Greece**



<b>Dissemination of results</b>	The data are posted on a yearly basis on the website of ELSTAT and are published in a relevant Press Release.
<b>Reference period</b>	<p>The data of the surveys refer to the end of school year 2015/2016.</p> <p>For comparability reasons, the data of the end of the previous school year 2014/2015 are also provided, part of which have been revised since the publication of the relevant press release (09/12/2016).</p>
<b>Methodology and coverage</b>	<p>Until the school year 2013/2014, the survey on Secondary Vocational Education used to be a census, yearly survey and it was conducted by ELSTAT.</p> <p>From the school year 2014/2015 onwards, the data of the survey are collected as follows:</p> <ul style="list-style-type: none"> <li>– As regards public school units of the Ministry of Education, Research and Religious Affairs (EPAL and EPAS), the data were extracted from the “live” e-platform “MySchool” of the Ministry of Education, Research and Religious Affairs.</li> <li>– As regards public school units which are not under the competency of the Ministry of Education, Research and Religious Affairs, data were collected via an annual census survey with the use of questionnaires.</li> <li>– As regards private school units, the data were collected via an annual census survey with the use of questionnaires.</li> </ul>
<b>References</b>	<p>More information on the Survey on Secondary Vocational Education, such as tables with the survey’s results, samples of questionnaires, etc., can be found on the webpage of ELSTAT <a href="http://www.statistics.gr">www.statistics.gr</a> and at the link: “Statistics”/ Population and Social Conditions / Education /Secondary Vocational Education”.</p>