



## PRESS RELEASE

### ARRIVALS AND NIGHTS SPENT IN HOTELS, SIMILAR ESTABLISHMENTS AND TOURIST CAMPSITES: 2018 (final data)

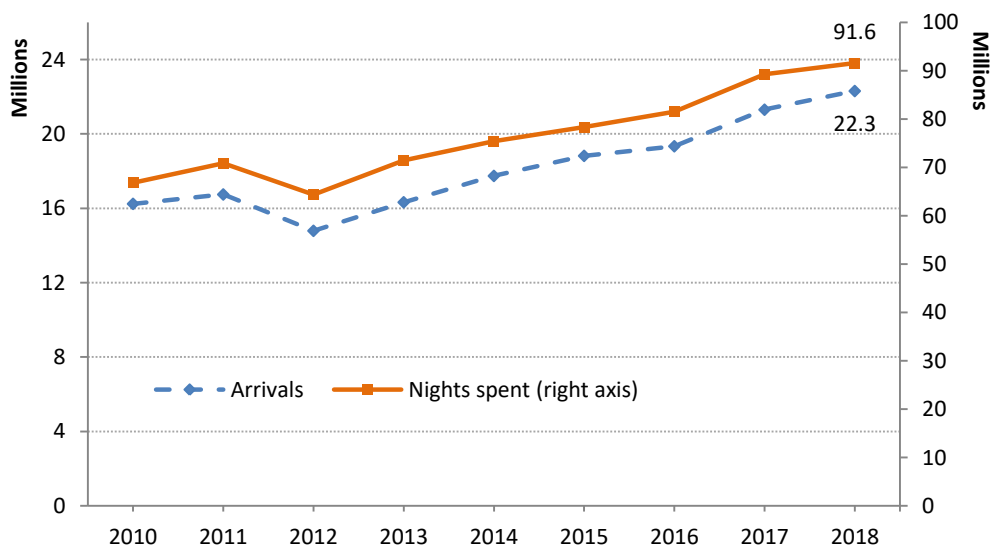
According to the results of the survey on arrivals and nights spent in hotels, similar establishments and tourist campsites, conducted by the Hellenic Statistical Authority (ELSTAT), for the total of these establishments, in 2018 compared with 2017, an increase of 4.7% is recorded in arrivals (Tables 1 and 4) and a 2.6% increase in nights spent (Tables 2 and 5).

More specifically, in 2018 compared with 2017, an increase of 8.0% and 4.1% is recorded in arrivals and in nights spent by non residents, respectively and a decrease of 3.3% and 5.3% in arrivals and nights spent by residents, respectively (Tables 1, 2, 7 and 8).

The annual occupancy rate of the bed places in hotels and similar establishments (excluding tourist campsites) amounted to 52.7% in 2018, compared with 51.9% in 2017 (Tables 3 and 6).

More specifically, according to the monthly distribution of the data, 85.3% of the arrivals and 92.2% of the nights spent, in hotels, similar establishments and tourist campsites of Greece, are recorded during the period from April to October (Tables 1 and 2, Graph 2).

**Graph 1. Arrivals and nights spent in hotels, similar establishments and tourist campsites, 2010 – 2018**



**Information:**

Trade and Services Statistics Division  
Tourism Statistics Section  
A. Katri, M. Apartoglou  
Tel.: +30 213 135 2168, 213 135 2942  
Fax: +30 213 135 2947  
e-mail: [tourism.sector@statistics.gr](mailto:tourism.sector@statistics.gr)

As regards the breakdown of the survey data by NUTS 2 Region, an increase is observed in arrivals and nights spent, in absolute values, in Kriti (9.2% in arrivals and 2.5% in nights spent), Notio Aigaio (7.5% in arrivals and 5.3% in nights spent), and Attiki (3.9% in arrivals and 3.0% in nights spent) (Tables 4 and 5).

In 2018, the largest share of arrivals and nights spent in hotels, similar establishments and tourist campsites, is recorded by non-residents, i.e. 73.0% of arrivals and 84.5% of nights spent (Graph 3).

In 2018, the largest share of arrivals and nights spent by non-residents in hotels, similar establishments and tourist campsites is recorded by customers (guests) whose country of residence is in Europe (81.2% of arrivals and 90.7% of nights spent) with a significant contribution from the EU Members States (68.9% of arrivals and 77.1% of nights spent). The largest contribution concerning arrivals is recorded for Germany (14.4% of arrivals and 18.9% of nights spent), the United Kingdom (13.0% of arrivals and 16.1% of nights spent), France (7.7% of arrivals and 6.6% of nights spent), Italy (4.6% of arrivals and 3.9% of nights spent) and Poland (4.4% of arrivals and 5.2% of nights spent). For the rest of the European countries, the largest contribution is recorded for Russia (4.8% of arrivals and 6.4% of nights spent). From the rest of the countries the largest contribution is recorded from the United States of America (6.3% of arrivals and 2.9% of nights spent) (Tables 7 and 8).

When comparing the data of arrivals and nights spent in hotels, similar establishments and tourist campsites, by country of residence of the year 2018 with the corresponding data of the year 2017, a significant increase of arrivals, in absolute values, is recorded, for the EU Members States, from Germany (13.8% in arrivals and 9.2% in nights spent), Poland (27.1% in arrivals and 23.1% in nights spent) and the United Kingdom (6.5% in arrivals and 4.3% in nights spent). From the other European countries a significant decrease of arrivals, in absolute values, is recorded from Turkey (25.3% in arrivals and 24.7% in nights spent) and from Russia (7.8% of in arrivals and 13.7% in nights spent). From the rest of the continents, a significant increase in arrivals, in absolute values, is recorded from America, with a large contribution from the United States of America (increase of 20.4% in arrivals and 15.8% in nights spent) and from Asia, with a large contribution from the People's Republic of China (increase of 13.6% in arrivals and 14.8% in nights spent) (Tables 7 and 8).

**Table 1. Arrivals of residents and non-residents at hotels, similar establishments and tourist campsites, by month, 2017 and 2018**

	2017					2018					Change % of total 2018/2017
	Hotels and similar establishments			Tourist campsites		Hotels and similar establishments			Tourist campsites		
	Total <sup>(1)</sup>	Residents	Non-residents	Residents <sup>(1)</sup>	Non-residents	Total	Residents	Non-residents	Residents	Non-residents	
Total	21,303,885	6,105,805	14,830,511	132,934	234,635	22,307,735	5,903,020	16,019,878	131,116	253,721	4.7
January	521,020	356,144	164,639	62	175	552,227	367,056	184,856	79	236	6.0
February	569,785	388,671	180,815	69	230	589,500	381,974	207,170	79	277	3.5
March	759,642	472,511	286,704	80	347	862,791	456,109	405,931	125	626	13.6
April	1,332,810	544,947	782,536	697	4,630	1,415,611	523,341	886,409	617	5,244	6.2
May	2,270,114	479,815	1,765,509	4,818	19,972	2,633,143	530,778	2,068,561	6,649	27,155	16.0
June	2,964,581	570,571	2,349,940	12,725	31,345	3,108,472	525,354	2,531,328	14,260	37,530	4.9
July	3,512,975	716,439	2,689,901	44,894	61,741	3,556,154	643,469	2,805,931	41,448	65,306	1.2
August	3,552,822	775,507	2,640,188	61,444	75,683	3,600,390	721,789	2,744,972	59,908	73,721	1.3
September	2,866,998	562,467	2,262,546	7,170	34,815	2,986,799	533,299	2,408,758	7,215	37,527	4.2
October	1,690,087	438,597	1,245,954	663	4,873	1,725,526	413,328	1,306,452	425	5,321	2.1
November	641,535	368,715	272,131	179	510	668,205	376,729	290,780	165	531	4.2
December	621,516	431,421	189,648	133	314	608,917	429,794	178,730	146	247	-2.0

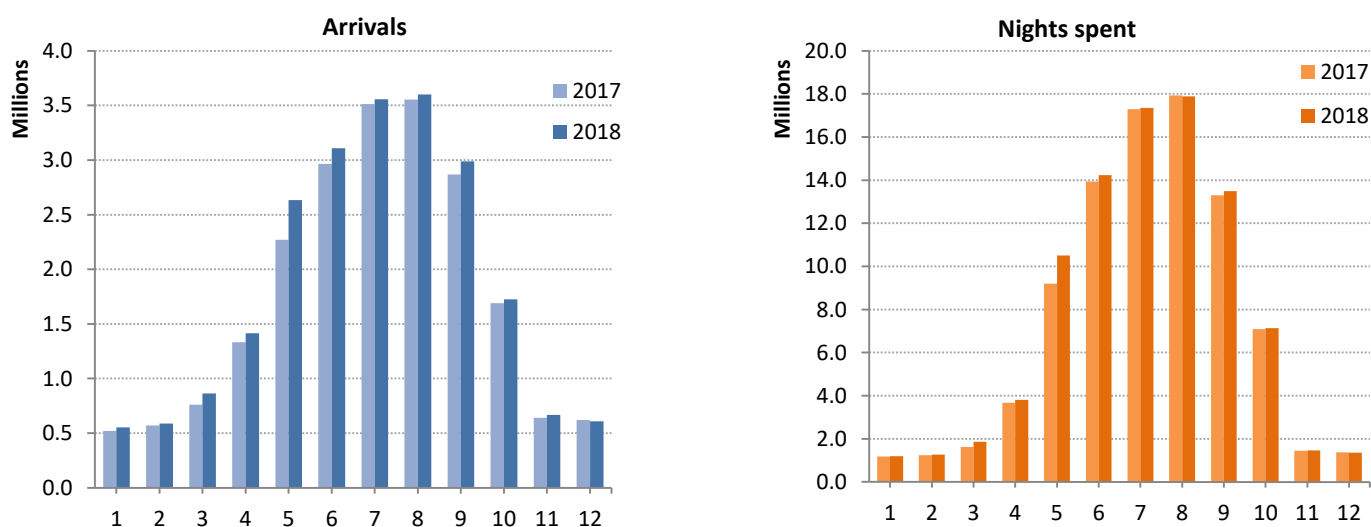
(1) Revised data.

**Table 2. Nights spent of residents and non-residents in hotels, similar establishments and tourist campsites, by month, 2017 and 2018**

	2017					2018					Change % of total 2018/2017
	Hotels and similar establishments			Tourist campsites		Hotels and similar establishments			Tourist campsites		
	Total <sup>(1)</sup>	Residents	Non-residents	Residents <sup>(1)</sup>	Non-residents	Total	Residents	Non-residents	Residents	Non-residents	
Total	89,284,319	14,154,141	73,474,232	785,346	870,600	91,569,437	13,410,226	76,494,991	741,875	922,345	2.6
January	1,173,185	726,650	445,552	158	825	1,190,677	739,013	450,652	205	807	1.5
February	1,246,617	783,685	462,163	131	638	1,276,130	762,855	512,217	193	865	2.4
March	1,632,453	920,547	710,609	215	1,082	1,867,056	896,825	967,991	388	1,852	14.4
April	3,669,706	1,179,694	2,477,069	2,533	10,410	3,810,987	1,120,095	2,677,412	2,003	11,477	3.8
May	9,203,265	972,355	8,134,270	38,797	57,843	10,505,106	1,079,622	9,299,068	49,922	76,494	14.1
June	13,940,305	1,290,707	12,445,646	89,997	113,955	14,235,517	1,164,433	12,846,639	86,658	137,787	2.1
July	17,286,449	1,962,065	14,848,511	237,735	238,138	17,347,942	1,747,430	15,127,573	219,908	253,031	0.4
August	17,925,522	2,501,268	14,783,857	343,781	296,616	17,886,981	2,294,674	14,972,547	330,625	289,135	-0.2
September	13,293,719	1,286,602	11,808,082	66,627	132,408	13,492,126	1,194,722	12,113,236	49,577	134,591	1.5
October	7,087,806	896,137	6,171,913	4,559	15,197	7,137,335	813,792	6,308,274	1,527	13,742	0.7
November	1,445,219	722,586	719,980	484	2,169	1,455,442	704,144	749,049	507	1,742	0.7
December	1,380,073	911,845	466,580	329	1,319	1,364,138	892,621	470,333	362	822	-1.2

(1) Revised data.

Graph 2. Arrivals and nights spent in hotels, similar establishments and tourist campsites, by month, 2017 and 2018



Graph 3. Arrivals and nights spent by residents and non-residents in hotels, similar establishments and tourist campsites, 2018

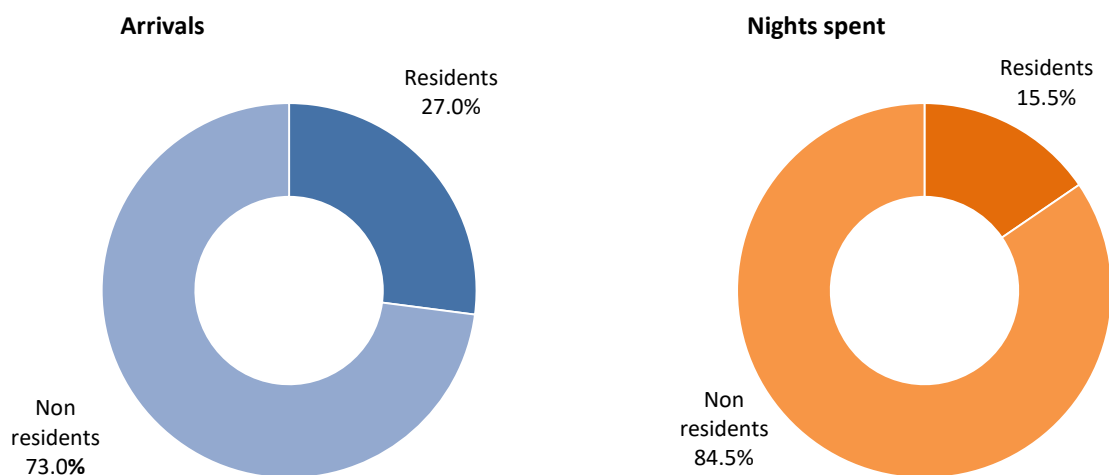
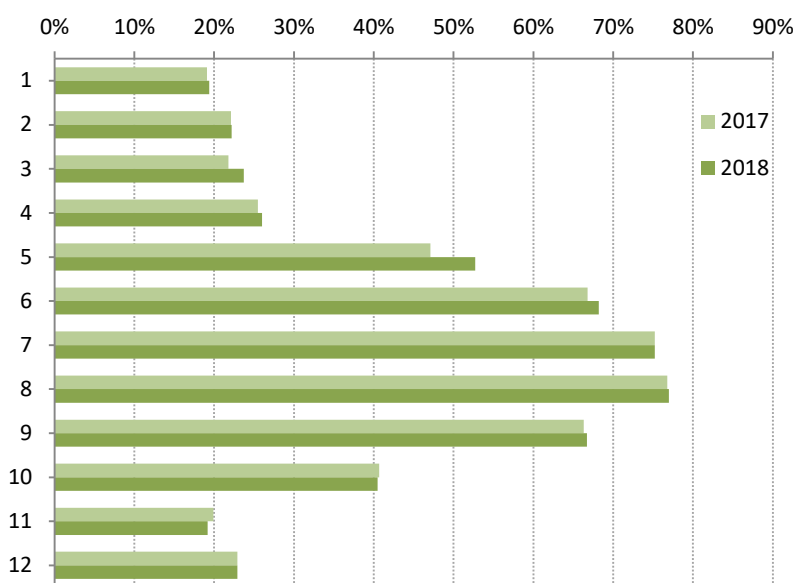


Table 3. Occupancy rate of bed-places in hotels and similar establishments, by month, 2017 and 2018

	Occupancy of bed-places %	
	2017 <sup>(1)</sup>	2018
<b>Annual occupancy</b>	<b>51.9</b>	<b>52.7</b>
January	19.1	19.4
February	22.1	22.2
March	21.8	23.7
April	25.5	26.0
May	47.1	52.7
June	66.8	68.2
July	75.2	75.2
August	76.8	77.0
September	66.3	66.7
October	40.7	40.5
November	19.9	19.2
December	22.9	22.9

(1) Revised data.

Graph 4. Occupancy rate of bed-places in hotels and similar establishments, by month, 2017 and 2018



**Table 4. Arrivals at hotels, similar establishments and tourist campsites, by NUTS 2 Region, 2017 and 2018**

	2017				2018				Change % of total 2018/2017
	Total <sup>(1)</sup>	Hotels and similar establishments	Tourist campsites <sup>(1)</sup>	Percentage % of total	Total	Hotels and similar establishments	Tourist campsites	Percentage % of total	
<b>Total</b>	<b>21,303,885</b>	<b>20,936,316</b>	<b>367,569</b>	<b>100.0</b>	<b>22,307,735</b>	<b>21,922,898</b>	<b>384,837</b>	<b>100.0</b>	<b>4.7</b>
Anatoliki Makedonia, Thraki	675,158	649,015	26,143	3.2	674,734	646,938	27,796	3.0	-0.1
Kentriki Makedonia	2,654,847	2,547,544	107,303	13.1	2,691,440	2,578,398	113,042	12.1	1.4
Dytiki Makedonia <sup>(2)</sup>	131,741	131,741	0	0.6	123,310	123,310	0	0.6	-6.4
Thessalia	946,949	923,834	23,115	4.3	995,936	972,442	23,494	4.5	5.2
Ipeiros	473,055	457,581	15,474	2.2	501,106	482,102	19,004	2.2	5.9
Ionia Nisia	1,737,859	1,717,806	20,053	7.8	1,785,045	1,763,942	21,103	8.0	2.7
Dytiki Ellada	652,682	633,483	19,199	3.1	671,432	651,288	20,144	3.0	2.9
Stereia Ellada	614,840	598,656	16,184	2.9	625,028	609,729	15,299	2.8	1.7
Peloponnisos	1,207,387	1,133,876	73,511	5.4	1,217,111	1,142,046	75,065	5.5	0.8
Attiki	4,121,114	4,107,066	14,048	19.3	4,282,132	4,267,891	14,241	19.2	3.9
Voreio Aigaio <sup>(2)</sup>	343,099	343,099	0	1.5	346,398	346,398	0	1.6	1.0
Notio Aigaio	3,738,955	3,698,691	40,264	17.3	4,020,660	3,976,452	44,208	18.0	7.5
Kriti	4,006,199	3,993,924	12,275	19.2	4,373,403	4,361,962	11,441	19.6	9.2

(1) Revised data.

(2) The arrivals and nights spent refer to hotels, similar establishments and tourist campsites, which are registered to the Hellenic Chamber of Hotels. For these specific regions tourist campsites are not registered to the Hellenic Chamber of Hotels.

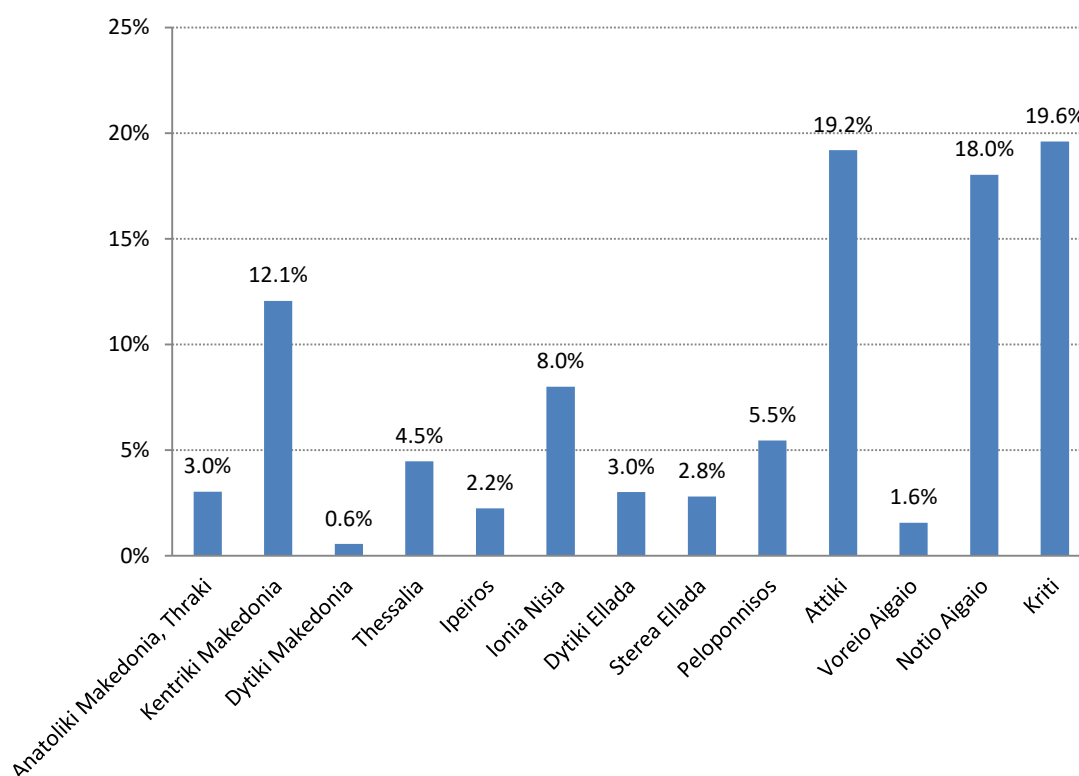
**Table 5. Nights spent in hotels, similar establishments and tourist campsites, by NUTS 2 Region, 2017 and 2018**

	2017				2018				Change % of total 2018/2017
	Total <sup>(1)</sup>	Hotels and similar establishments	Tourist campsites <sup>(1)</sup>	Percentage % of total	Total	Hotels and similar establishments	Tourist campsites	Percentage % of total	
<b>Total</b>	<b>89,284,319</b>	<b>87,628,373</b>	<b>1,655,946</b>	<b>100.0</b>	<b>91,569,437</b>	<b>89,905,217</b>	<b>1,664,220</b>	<b>100.0</b>	<b>2.6</b>
Anatoliki Makedonia, Thraki	2,110,497	1,973,242	137,255	2.4	2,101,808	1,953,831	147,977	2.3	-0.4
Kentriki Makedonia	9,744,305	9,086,001	658,304	10.9	9,538,709	8,886,343	652,366	10.4	-2.1
Dytiki Makedonia <sup>(2)</sup>	294,448	294,448	0	0.3	293,251	293,251	0	0.3	-0.4
Thessalia	2,273,798	2,209,719	64,079	2.5	2,290,721	2,223,430	67,291	2.5	0.7
Ipeiros	1,153,945	1,099,202	54,743	1.3	1,224,913	1,166,169	58,744	1.3	6.2
Ionia Nisia	9,982,465	9,885,033	97,432	11.2	10,337,448	10,231,098	106,350	11.3	3.6
Dytiki Ellada	1,964,907	1,902,912	61,995	2.2	1,915,540	1,857,922	57,618	2.1	-2.5
Stereia Ellada	1,789,737	1,717,667	72,070	2.0	1,797,820	1,728,160	69,660	2.0	0.5
Peloponnisos	3,378,470	3,091,937	286,533	3.8	3,390,150	3,106,093	284,057	3.7	0.3
Attiki	8,870,270	8,833,584	36,686	9.9	9,132,778	9,098,555	34,223	10.0	3.0
Voreio Aigaio <sup>(2)</sup>	1,750,671	1,750,671	0	2.0	1,837,209	1,837,209	0	2.0	4.9
Notio Aigaio	21,454,506	21,310,044	144,462	24.0	22,589,177	22,439,895	149,282	24.7	5.3
Kriti	24,516,300	24,473,913	42,387	27.5	25,119,913	25,083,261	36,652	27.4	2.5

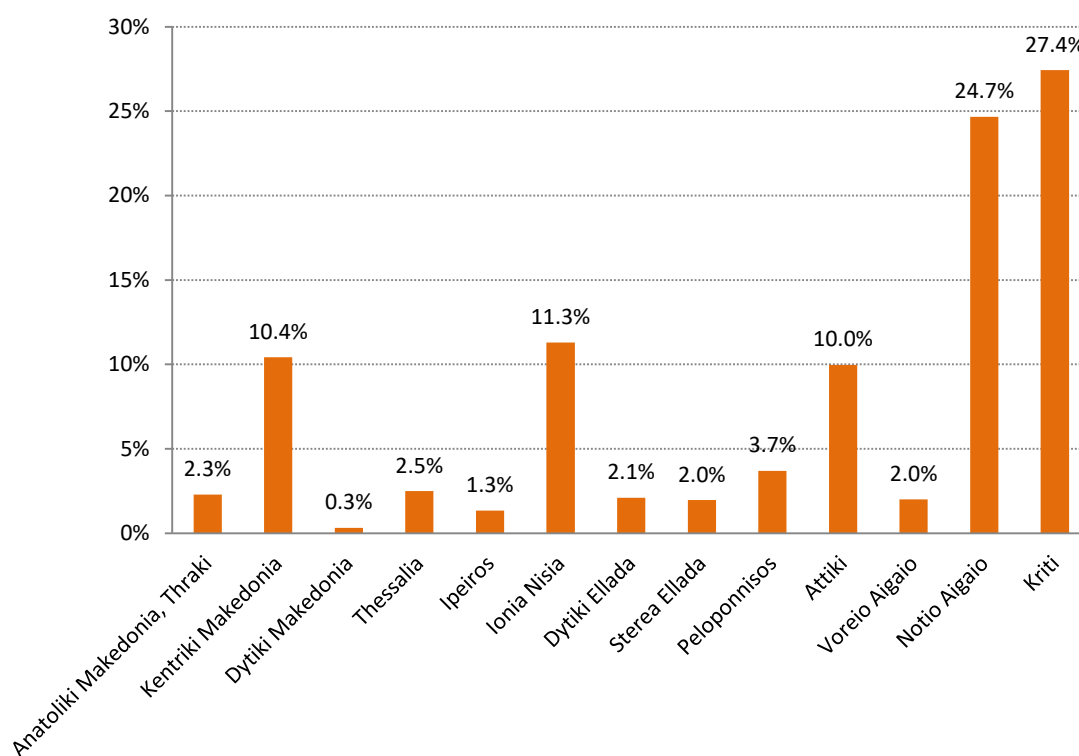
(1) Revised data.

(2) The arrivals and nights spent refer to hotels, similar establishments and tourist campsites, which are registered to the Hellenic Chamber of Hotels. For these specific regions tourist campsites are not registered to the Hellenic Chamber of Hotels.

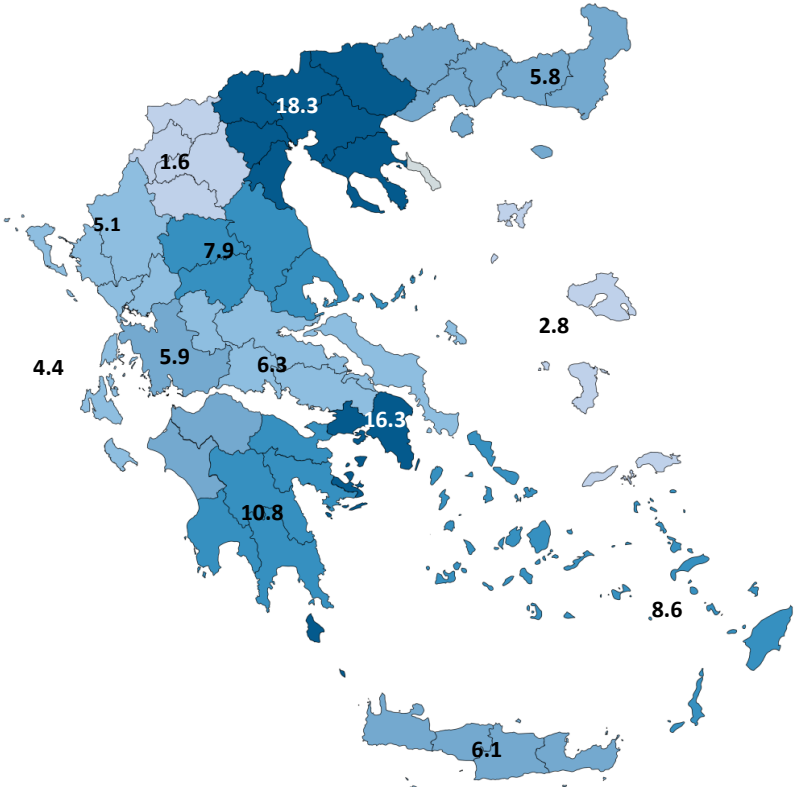
**Graph 5. Percentage distribution of arrivals at hotels, similar establishments and tourist campsites, by NUTS 2 Region, 2018**



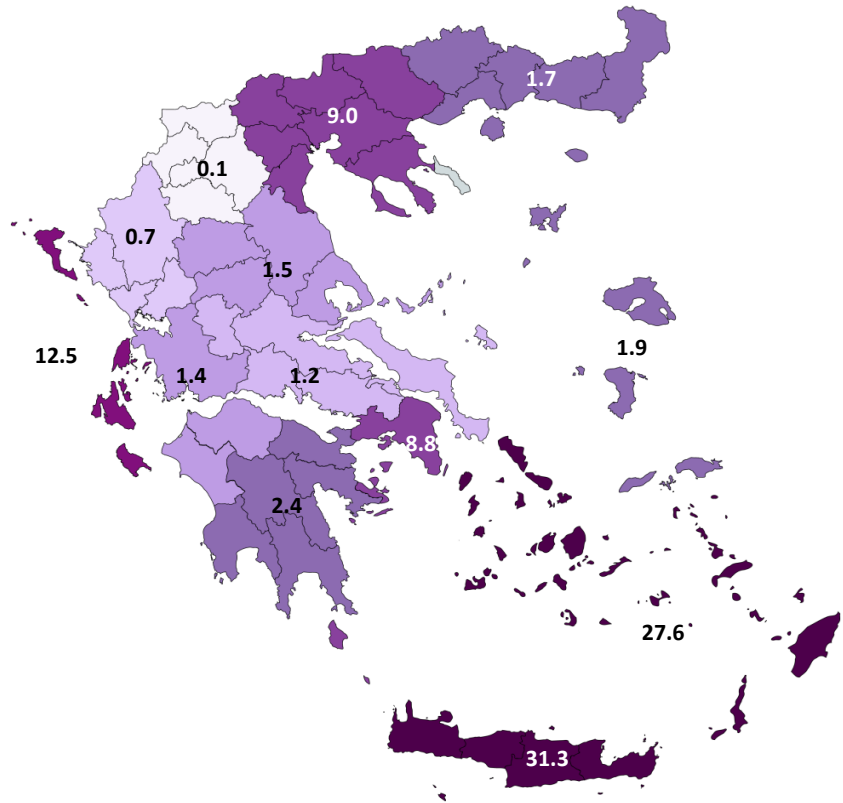
**Graph 6. Percentage distribution of nights spent in hotels, similar establishments and tourist campsites, by NUTS 2 Region, 2018**



**Graph 7. Percentage distribution of nights spent by residents in hotels, similar establishments and tourist campsites, by NUTS 2 Region, 2018**



**Graph 8. Percentage distribution of nights spent by non-residents in hotels, similar establishments and tourist campsites, by NUTS 2 Region, 2018**

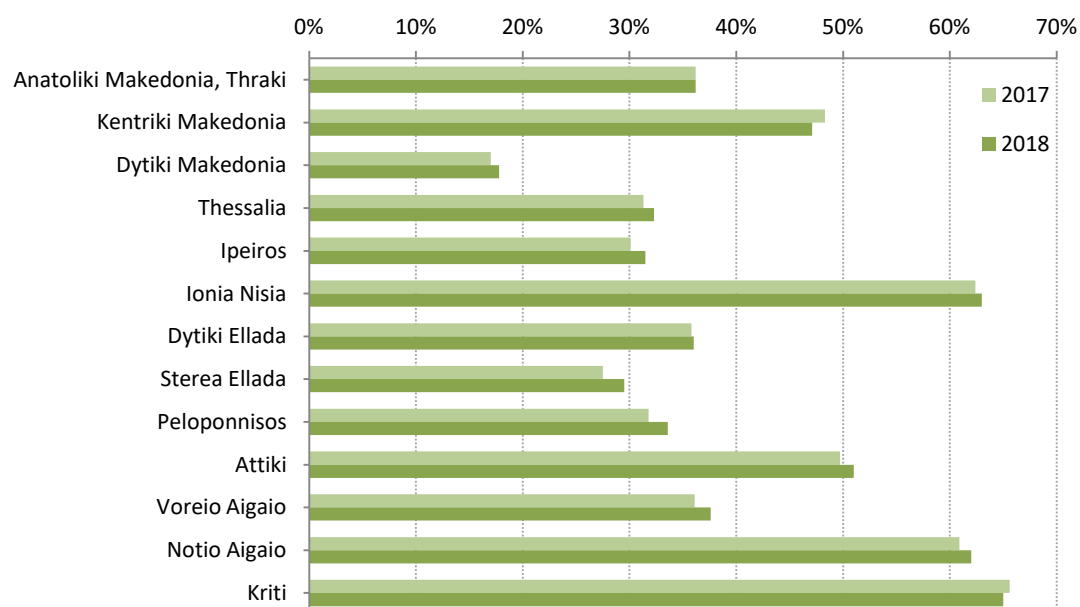


**Table 6. Occupancy rate of bed-places in hotels and similar establishments, by NUTS 2 Region, 2017 and 2018**

	Occupancy of bed-places %	
	2017 <sup>(1)</sup>	2018
<b>Annual occupancy</b>	<b>51.9</b>	<b>52.7</b>
Anatoliki Makedonia, Thraki	36.2	36.2
Kentriki Makedonia	48.3	47.1
Dytiki Makedonia	17.0	17.8
Thessalia	31.3	32.3
Ipeiros	30.1	31.5
Ionia Nisia	62.4	63.0
Dytiki Ellada	35.8	36.0
Stereia Ellada	27.5	29.5
Peloponnisos	31.8	33.6
Attiki	49.7	51.0
Voreio Aigaio	36.1	37.6
Notio Aigaio	60.9	62.0
Kriti	65.6	65.0

(1) Revised data.

**Graph 9. Occupancy rate of bed-places in hotels and similar establishments, by NUTS 2 Region, 2017 and 2018**





**Table 7. Arrivals of non-residents at hotels, similar establishments and tourist campsites, by country of residence, 2017 and 2018**

	2017				2018				Change % of total 2018/2017
	Total	Hotels and similar establishments	Tourist campsites	Percentage % of total	Total	Hotels and similar establishments	Tourist campsites	Percentage % of total	
<b>Total</b>	<b>15,065,146</b>	<b>14,830,511</b>	<b>234,635</b>	<b>100.0</b>	<b>16,273,599</b>	<b>16,019,878</b>	<b>253,721</b>	<b>100.0</b>	<b>8.0</b>
<b>Europe</b>	<b>12,370,587</b>	<b>12,153,442</b>	<b>217,145</b>	<b>82.1</b>	<b>13,221,139</b>	<b>12,985,322</b>	<b>235,817</b>	<b>81.2</b>	<b>6.9</b>
<b>European Union</b>	<b>10,257,676</b>	<b>10,060,684</b>	<b>196,992</b>	<b>68.1</b>	<b>11,219,928</b>	<b>11,005,973</b>	<b>213,955</b>	<b>68.9</b>	<b>9.4</b>
Austria	212,225	203,123	9,102	1.4	228,515	219,062	9,453	1.4	7.7
Belgium	321,624	317,825	3,799	2.1	331,818	328,198	3,620	2.0	3.2
Bulgaria	268,614	239,974	28,640	1.8	261,006	229,712	31,294	1.6	-2.8
France	1,164,128	1,128,919	35,209	7.7	1,252,809	1,216,655	36,154	7.7	7.6
Germany	2,054,654	2,009,852	44,802	13.6	2,337,805	2,289,348	48,457	14.4	13.8
Denmark	268,390	266,834	1,556	1.8	295,259	293,876	1,383	1.8	10.0
Estonia	29,172	29,010	162	0.2	33,275	33,131	144	0.2	14.1
United Kingdom	1,989,262	1,983,888	5,374	13.2	2,118,580	2,111,269	7,311	13.0	6.5
Ireland	53,202	52,174	1,028	0.4	60,460	59,409	1,051	0.4	13.6
Spain	205,388	202,524	2,864	1.4	233,565	230,142	3,423	1.4	13.7
Italy	744,695	718,960	25,735	4.9	747,927	722,400	25,527	4.6	0.4
Croatia	17,004	16,839	165	0.1	23,620	23,475	145	0.1	38.9
Cyprus	226,485	226,113	372	1.5	217,087	216,666	421	1.3	-4.1
Latvia	24,884	24,761	123	0.2	26,905	26,787	118	0.2	8.1
Lithuania	43,157	42,963	194	0.3	62,725	62,494	231	0.4	45.3
Luxembourg	21,918	21,835	83	0.1	23,788	23,710	78	0.1	8.5
Malta	8,325	8,262	63	0.1	8,971	8,954	17	0.1	7.8
Netherlands	567,479	551,060	16,419	3.8	613,592	594,867	18,725	3.8	8.1
Hungary	67,977	65,646	2,331	0.5	75,287	73,008	2,279	0.5	10.8
Poland	558,723	552,790	5,933	3.7	710,252	701,686	8,566	4.4	27.1
Portugal	32,464	32,023	441	0.2	38,103	37,602	501	0.2	17.4
Romania	363,327	357,987	5,340	2.4	364,718	358,479	6,239	2.2	0.4
Slovak Republic	73,673	73,019	654	0.5	85,475	84,744	731	0.5	16.0
Slovenia	33,673	31,097	2,576	0.2	38,588	35,043	3,545	0.2	14.6
Sweden	503,770	502,859	911	3.3	558,998	557,988	1,010	3.4	11.0
Czech Republic	227,999	225,139	2,860	1.5	258,925	255,591	3,334	1.6	13.6
Finland	175,464	175,208	256	1.2	211,875	211,677	198	1.3	20.8
<b>Total of other European countries</b>	<b>2,112,911</b>	<b>2,092,758</b>	<b>20,153</b>	<b>14.0</b>	<b>2,001,211</b>	<b>1,979,349</b>	<b>21,862</b>	<b>12.3</b>	<b>-5.3</b>
Iceland	10,074	10,044	30	0.1	11,592	11,549	43	0.1	15.1
Norway	277,549	277,183	366	1.8	302,749	302,423	326	1.9	9.1
Switzerland (incl. Liechtenstein)	243,633	237,430	6,203	1.6	246,906	239,547	7,359	1.5	1.3
Russia	847,624	846,185	1,439	5.6	781,459	779,926	1,533	4.8	-7.8
Turkey	301,312	297,118	4,194	2.0	225,178	221,629	3,549	1.4	-25.3
Other European countries	432,719	424,798	7,921	2.9	433,327	424,275	9,052	2.7	0.1
<b>Africa</b>	<b>65,948</b>	<b>65,427</b>	<b>521</b>	<b>0.4</b>	<b>68,713</b>	<b>68,298</b>	<b>415</b>	<b>0.4</b>	<b>4.2</b>
<b>America</b>	<b>1,170,586</b>	<b>1,163,609</b>	<b>6,977</b>	<b>7.8</b>	<b>1,383,698</b>	<b>1,375,691</b>	<b>8,007</b>	<b>8.5</b>	<b>18.2</b>
North America	1,000,591	996,786	3,805	6.6	1,187,763	1,183,059	4,704	7.3	18.7
USA	845,424	843,595	1,829	5.6	1,017,572	1,015,081	2,491	6.3	20.4
Canada	155,167	153,191	1,976	1.0	170,191	167,978	2,213	1.0	9.7
South and Central America	169,995	166,823	3,172	1.1	195,935	192,632	3,303	1.2	15.3
<b>Asia</b>	<b>1,172,722</b>	<b>1,170,742</b>	<b>1,980</b>	<b>7.8</b>	<b>1,304,071</b>	<b>1,302,221</b>	<b>1,850</b>	<b>8.0</b>	<b>11.2</b>
Japan	57,665	57,535	130	0.4	70,490	70,360	130	0.4	22.2
People's republic of China	292,705	292,526	179	1.9	332,513	332,280	233	2.0	13.6
Other Asian countries	822,352	820,681	1,671	5.5	901,068	899,581	1,487	5.5	9.6
<b>Oceania</b>	<b>271,961</b>	<b>263,987</b>	<b>7,974</b>	<b>1.8</b>	<b>277,689</b>	<b>270,075</b>	<b>7,614</b>	<b>1.7</b>	<b>2.1</b>
Australia	254,797	247,758	7,039	1.7	259,259	252,616	6,643	1.6	1.8
New Zealand and other Oceanian territories	17,164	16,229	935	0.1	18,430	17,459	971	0.1	7.4
<b>Not specified</b>	<b>13,342</b>	<b>13,304</b>	<b>38</b>	<b>0.1</b>	<b>18,289</b>	<b>18,271</b>	<b>18</b>	<b>0.1</b>	<b>37.1</b>

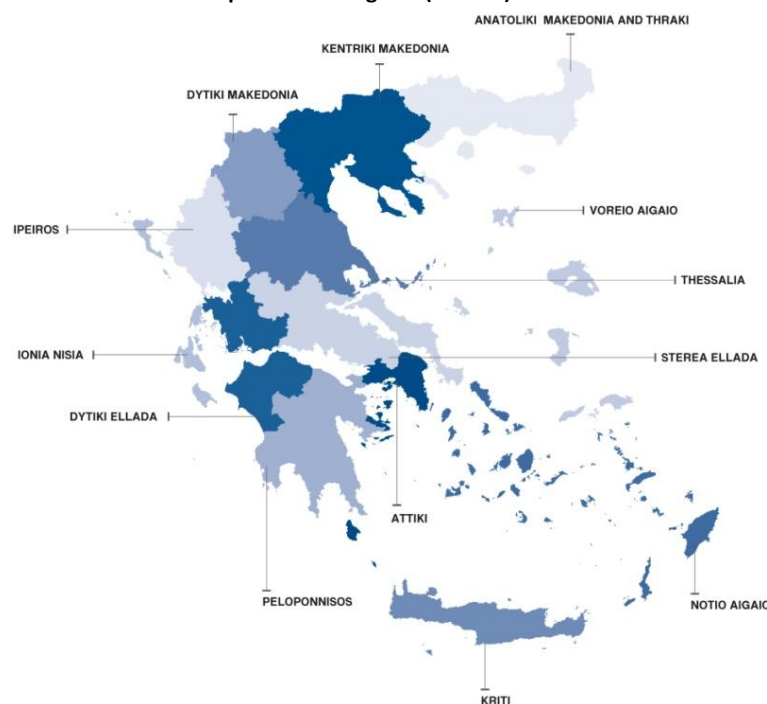
**Table 8. Nights spent by non-residents in hotels, similar establishments and tourist campsites, by country of residence, 2017 and 2018**

	2017				2018				Change % of total 2018/2017
	Total	Hotels and similar establishments	Tourist campsites	Percentage % of total	Total	Hotels and similar establishments	Tourist campsites	Percentage % of total	
<b>Total</b>	<b>74,344,832</b>	<b>73,474,232</b>	<b>870,600</b>	<b>100.0</b>	<b>77,417,336</b>	<b>76,494,991</b>	<b>922,345</b>	<b>100.0</b>	<b>4.1</b>
<b>Europe</b>	<b>67,744,601</b>	<b>66,926,409</b>	<b>818,192</b>	<b>91.1</b>	<b>70,187,488</b>	<b>69,319,328</b>	<b>868,160</b>	<b>90.7</b>	<b>3.6</b>
<b>European Union</b>	<b>56,237,638</b>	<b>55,518,565</b>	<b>719,073</b>	<b>75.6</b>	<b>59,660,314</b>	<b>58,894,931</b>	<b>765,383</b>	<b>77.1</b>	<b>6.1</b>
Austria	1,251,063	1,207,271	43,792	1.7	1,297,724	1,256,609	41,115	1.7	3.7
Belgium	1,786,156	1,774,004	12,152	2.4	1,767,855	1,757,075	10,780	2.3	-1.0
Bulgaria	925,593	792,567	133,026	1.2	888,069	736,597	151,472	1.1	-4.1
France	5,001,060	4,909,089	91,971	6.7	5,086,980	4,994,998	91,982	6.6	1.7
Germany	13,397,230	13,231,492	165,738	18.0	14,634,927	14,464,316	170,611	18.9	9.2
Denmark	1,683,034	1,674,720	8,314	2.3	1,753,894	1,746,255	7,639	2.3	4.2
Estonia	167,924	167,401	523	0.2	176,891	176,550	341	0.2	5.3
United Kingdom	11,972,476	11,953,661	18,815	16.1	12,481,845	12,459,145	22,700	16.1	4.3
Ireland	216,458	212,216	4,242	0.3	239,273	235,636	3,637	0.3	10.5
Spain	491,800	484,608	7,192	0.7	530,039	521,311	8,728	0.7	7.8
Italy	3,076,508	2,984,525	91,983	4.1	2,991,648	2,901,431	90,217	3.9	-2.8
Croatia	51,932	51,257	675	0.1	66,113	65,540	573	0.1	27.3
Cyprus	633,671	632,240	1,431	0.9	595,931	594,072	1,859	0.8	-6.0
Latvia	137,072	136,745	327	0.2	149,673	149,426	247	0.2	9.2
Lithuania	243,106	242,594	512	0.3	339,055	338,584	471	0.4	39.5
Luxembourg	114,363	114,067	296	0.2	122,080	121,657	423	0.2	6.7
Malta	27,993	27,747	246	0.0	33,366	33,318	48	0.0	19.2
Netherlands	3,332,488	3,278,054	54,434	4.5	3,526,334	3,464,407	61,927	4.6	5.8
Hungary	363,891	354,433	9,458	0.5	392,191	381,735	10,456	0.5	7.8
Poland	3,300,828	3,278,308	22,520	4.4	4,062,461	4,034,107	28,354	5.2	23.1
Portugal	106,138	105,033	1,105	0.1	123,157	121,955	1,202	0.2	16.0
Romania	1,504,131	1,480,321	23,810	2.0	1,482,557	1,453,645	28,912	1.9	-1.4
Slovak Republic	474,828	471,836	2,992	0.6	539,798	536,133	3,665	0.7	13.7
Slovenia	160,961	151,510	9,451	0.2	170,227	158,120	12,107	0.2	5.8
Sweden	3,117,452	3,114,304	3,148	4.2	3,267,332	3,263,949	3,383	4.2	4.8
Czech Republic	1,557,980	1,547,972	10,008	2.1	1,626,856	1,614,976	11,880	2.1	4.4
Finland	1,141,502	1,140,590	912	1.5	1,314,038	1,313,384	654	1.7	15.1
<b>Total of other European countries</b>	<b>11,506,963</b>	<b>11,407,844</b>	<b>99,119</b>	<b>15.5</b>	<b>10,527,174</b>	<b>10,424,397</b>	<b>102,777</b>	<b>13.6</b>	<b>-8.5</b>
Iceland	44,316	44,188	128	0.1	47,044	46,899	145	0.1	6.2
Norway	1,890,815	1,889,716	1,099	2.5	1,961,577	1,960,515	1,062	2.5	3.7
Switzerland (incl. Liechtenstein)	1,257,039	1,237,847	19,192	1.7	1,202,557	1,181,408	21,149	1.6	-4.3
Russia	5,708,936	5,702,627	6,309	7.7	4,924,840	4,917,865	6,975	6.4	-13.7
Turkey	585,763	575,653	10,110	0.8	441,016	432,346	8,670	0.6	-24.7
Other European countries	2,020,094	1,957,813	62,281	2.7	1,950,140	1,885,364	64,776	2.5	-3.5
<b>Africa</b>	<b>204,742</b>	<b>202,499</b>	<b>2,243</b>	<b>0.3</b>	<b>215,001</b>	<b>213,013</b>	<b>1,988</b>	<b>0.3</b>	<b>5.0</b>
<b>America</b>	<b>2,695,838</b>	<b>2,676,328</b>	<b>19,510</b>	<b>3.6</b>	<b>3,091,514</b>	<b>3,069,326</b>	<b>22,188</b>	<b>4.0</b>	<b>14.7</b>
North America	2,296,896	2,286,350	10,546	3.1	2,633,736	2,620,716	13,020	3.4	14.7
USA	1,927,767	1,922,595	5,172	2.6	2,232,611	2,226,307	6,304	2.9	15.8
Canada	369,129	363,755	5,374	0.5	401,125	394,409	6,716	0.5	8.7
South and Central America	398,942	389,978	8,964	0.5	457,778	448,610	9,168	0.6	14.7
<b>Asia</b>	<b>2,970,337</b>	<b>2,963,812</b>	<b>6,525</b>	<b>4.0</b>	<b>3,166,666</b>	<b>3,162,254</b>	<b>4,412</b>	<b>4.1</b>	<b>6.6</b>
Japan	111,783	111,396	387	0.2	130,774	130,471	303	0.2	17.0
People's republic of China	469,185	468,776	409	0.6	538,407	537,830	577	0.7	14.8
Other Asian countries	2,389,369	2,383,640	5,729	3.2	2,497,485	2,493,953	3,532	3.2	4.5
<b>Oceania</b>	<b>674,962</b>	<b>650,914</b>	<b>24,048</b>	<b>0.9</b>	<b>684,318</b>	<b>658,774</b>	<b>25,544</b>	<b>0.9</b>	<b>1.4</b>
Australia	632,281	611,153	21,128	0.9	638,522	616,033	22,489	0.8	1.0
New Zealand and other Oceanian territories	42,681	39,761	2,920	0.1	45,796	42,741	3,055	0.1	7.3
<b>Not specified</b>	<b>54,352</b>	<b>54,270</b>	<b>82</b>	<b>0.1</b>	<b>72,349</b>	<b>72,296</b>	<b>53</b>	<b>0.1</b>	<b>33.1</b>

## EXPLANATORY NOTES

<b>Arrivals and nights spent at hotels, similar establishments and tourist campsites</b>	Data on arrivals and nights spent at hotels, similar establishments and tourist campsites are collected from a monthly census survey. Each establishment fills in a questionnaire, for every month that it is in operation. It is mandatory for all hotels, similar establishments and tourist campsites to participate in the survey.
<b>Legal frame</b>	The survey is conducted pursuant to Regulation 692/2011 of the European Parliament and of the Council.
<b>Reference unit</b>	Data refer to all establishments (hotels, similar establishments and tourist campsites) that are registered in the Hellenic Chamber of Hotels. ELSTAT receives the register every three months and subsequently it updates its register that is related to the survey.
<b>Reference period</b>	January - December 2018 (Final data).
<b>Coverage</b>	The results of the survey refer to about 80% of the total bed-places that operate in Greece. The reason why there is no estimation and projection of the results to 100% of the reference population is the fact that there is no information on the exact months during which each establishment is in operation. The lack of this information makes it impossible to make this estimation for every month and hence for the total of the year.
<b>Geographical classification</b>	The geographical classification is based on <i>Nomenclature of Territorial Units for Statistics</i> .

**Map of the 13 Regions (NUTS 2) of Greece**



<b>Definitions</b>	<p><u>Resident</u>: Every person, regardless of citizenship, that has resided in Greece for at least a year, or has arrived in Greece with the intention to reside in the country for at least 1 year.</p> <p><u>Non-resident</u>: Every person, regardless of citizenship, that is not considered to be resident.</p> <p><u>Arrivals</u>: The arrivals at the establishments are calculated for every person separately. The data refer to the total number of persons and not to the total number of rooms that were occupied. Only the persons that had at least one overnight stay at the establishment are counted.</p> <p><u>Nights spent</u>: The nights spent are calculated for every person separately. The data refer to the total number of nights spent by every person and not to the total number of nights spent in every room.</p> <p><u>Occupancy of bed-places</u>: The monthly occupancy of bed-places is calculated on the basis of the number of the bed-places, as reported by each establishment. The rate refers to the occupancy that was accomplished, as compared with the maximum occupancy that is expected according to the available bed-places. The occupancy of the period is the result of the average occupancy rates of every month of the period, weighted by the bed-places that were in operation for each month.</p>
<b>Methodology</b>	This is a monthly census survey. The data come from the establishments, which fill in a questionnaire (by paper form or on-line application) for every month that each establishment is in operation. During the year ELSTAT updates regularly the register of the hotels, similar establishments and tourist campsites, so that the data refer to the actual number of establishments that are in operation. Moreover, regular reminders for the submission of the data are sent to the establishments, so as ELSTAT can gather as much data as possible.
<b>References</b>	More information at a more detailed geographical level of the survey results on hotels, similar establishments and tourist campsites is available on the website of ELSTAT at: <a href="http://www.statistics.gr/en/statistics/-/publication/STO12/-">http://www.statistics.gr/en/statistics/-/publication/STO12/-</a>