



PRESS RELEASE

Building Activity Survey: July 2017

The Hellenic Statistical Authority (ELSTAT) announces the provisional data, for the month July 2017, of the Building Activity Survey. More Specifically:

- The Total Building Activity (private-public) in Greece, in July 2017 which is calculated on the basis of the number of issued building permits, amounted to 1,359. This figure corresponds to 290.3 thousand m² of surface and 1,357.6 thousand m³ of volume, reflecting, respectively, a 2.4% decrease in the number of building permits, a 9.1% increase in surface and a 10.4% increase in volume, compared with the corresponding month of 2016 (Table 1).
- The building permits for the Private Building Activity issued in Greece in July 2017 amounted to 1,344. This figure corresponds to 282.3 thousand m² of surface and 1,324.0 thousand m³ of volume. In comparison with the same month of 2016 there is a 2.7% decrease in the number of building permits, a 9.4% increase in surface and a 10.0% increase in volume (Table 2). The building permits for the Public Building Activity issued in Greece in July 2017 amounted to 15. This figure corresponds to 8.0 thousand m² of surface and 33.6 thousand m³ of volume. Public Building Activity accounted for 2.5% of the total building volume in July 2017.
- In the last twelve months, from August 2016 until July 2017, Total Building Activity (private-public) in Greece, calculated on the basis of the number of issued building permits, amounted to 13,272. This figure corresponds to 2,695.4 thousand m² of surface and 11,706.4 thousand m³ of volume. In comparison with the corresponding period from August 2015 until July 2016, there is a 6.7% increase in the number of building permits, a 16.4% increase in surface and a 12.5% increase in volume (Table 3).
- In the same period, from August 2016 until July 2017, Private Building Activity in Greece recorded a 6.7% increase in the number of issued building permits, a 17.6% increase in surface and a 14.3% increase in volume, compared with the corresponding period from August 2015 to July 2016 (Table 4). During the same period, Public Building Activity accounted for 2.4% of the total building volume.
- During the period January - July 2017, Total Building Activity (private-public) in Greece recorded a 10.5% increase in the number of issued building permits, a 20.8% increase in surface and a 19.1% increase in volume, compared with the corresponding period of 2016 (Table 5).
- During the same period, January - July 2017, Private Building Activity in Greece recorded a 10.7% increase in the number of issued building permits, a 23.0% increase in surface and a 21.1% increase in volume, in comparison with the corresponding period of January - July 2016 (Table 6).

Information

Secondary Sector Statistics Division

Construction and Environment Statistics Section

Sofia Martini

Tel.: 213 135 2429

Fax: 213 135 2453

E-mail: s.martini@statistics.gr

Table 1. Total Building Activity, by Region (NUTS II), July 2016* and 2017*

Region	Number of Building Permits			Surface (in thousand m ²)			Volume (in thousand m ³)		
	July		Change (%)	July		Change (%)	July		Change (%)
	2016	2017		2016	2017		2016	2017	
Anatoliki Makedonia, Thraki	58	42	-27.6	11.3	11.8	5.0	49.0	44.3	-9.5
Kentriki Makedonia	174	170	-2.3	47.3	50.5	6.8	339.9	305.3	-10.2
Dytiki Makedonia	42	26	-38.1	6.0	10.7	78.1	27.6	64.5	133.7
Thessalia	65	69	6.2	20.1	12.7	-36.8	117.6	52.5	-55.3
Ipeiros	34	42	23.5	8.7	11.4	32.0	35.8	55.1	53.7
Ionioi Nisoi	56	66	17.9	6.8	11.9	75.2	22.3	38.7	73.4
Dytiki Ellada	106	108	1.9	16.2	16.1	-0.8	60.4	62.0	2.6
Stereia Ellada	126	100	-20.6	24.1	25.5	6.1	113.1	158.7	40.3
Peloponnisos	151	147	-2.6	27.6	25.7	-7.1	101.1	132.6	31.2
Attiki	338	357	5.6	48.8	69.8	43.0	193.3	306.2	58.4
Voreio Aigaio	24	37	54.2	2.2	4.3	94.9	7.1	14.2	100.1
Notio Aigaio	122	93	-23.8	12.4	9.5	-24.0	41.4	28.4	-31.4
Kriti	96	102	6.3	34.7	30.5	-12.2	120.8	95.1	-21.3
Greece, Total	1,392	1,359	-2.4	266.1	290.3	9.1	1,229.3	1,357.6	10.4

**Provisional Data*

It should be noted that the increase or decrease in the number of the issued building permits does not imply, necessarily, an increase or decrease in the underlying surface or volume. This is due to individual building permits involving big surface or volume or to building permits that do not concern surface or volume.

Table 2. Private Building Activity, by Region (NUTS II), July 2016* and 2017*

Region	Number of Building Permits			Surface (in thousand m ²)			Volume (in thousand m ³)		
	July		Change (%)	July		Change (%)	July		Change (%)
	2016	2017		2016	2017		2016	2017	
Anatoliki Makedonia, Thraki	58	38	-34.5	11.3	8.4	-25.3	49.0	30.4	-37.8
Kentriki Makedonia	172	167	-2.9	47.1	50.5	7.1	339.3	305.2	-10.1
Dytiki Makedonia	42	26	-38.1	6.0	10.7	78.1	27.6	64.5	133.7
Thessalia	64	69	7.8	20.1	12.7	-36.8	117.6	52.5	-55.3
Ipeiros	34	42	23.5	8.7	11.4	32.0	35.8	55.1	53.7
Ionioi Nisoi	56	66	17.9	6.8	11.9	75.2	22.3	38.7	73.4
Dytiki Ellada	104	107	2.9	16.2	15.4	-4.6	60.4	59.5	-1.4
Stereia Ellada	126	98	-22.2	24.1	25.3	5.3	113.1	157.8	39.5
Peloponnisos	151	146	-3.3	27.6	25.7	-7.1	101.1	132.6	31.2
Attiki	336	354	5.4	46.4	67.6	45.6	186.8	295.5	58.2
Voreio Aigaio	24	37	54.2	2.2	4.3	94.9	7.1	14.2	100.1
Notio Aigaio	120	93	-22.5	12.4	9.5	-24.0	41.4	28.4	-31.4
Kriti	95	101	6.3	29.3	29.0	-1.0	101.9	89.6	-12.1
Greece, Total	1,382	1,344	-2.7	258.1	282.3	9.4	1,203.4	1,324.0	10.0

**Provisional Data*

It should be noted that the increase or decrease in the number of the issued building permits does not imply, necessarily, an increase or decrease in the underlying surface or volume. This is due to individual building permits involving big surface or volume or to building permits that do not concern surface or volume.

Table 3. Total Building Activity, by Region (NUTS II), August**2015 - July 2016* and August 2016 – July 2017***

Region	Number of Building Permits			Surface (in thousand m ²)			Volume (in thousand m ³)		
	August - July		Change (%)	August - July		Change (%)	August - July		Change (%)
	2015-16	2016-17		2015-16	2016-17		2015-16	2016-17	
Anatoliki Makedonia, Thraki	544	470	-13.6	88.0	118.2	34.2	362.3	540.3	49.2
Kentriki Makedonia	1,885	1,715	-9.0	405.9	391.8	-3.5	2,299.7	2,043.9	-11.1
Dytiki Makedonia	249	300	20.5	72.2	75.4	4.4	429.5	395.7	-7.9
Thessalia	656	688	4.9	169.9	190.4	12.0	1,022.0	983.9	-3.7
Ipeiros	430	465	8.1	88.1	110.8	25.7	352.0	479.6	36.2
Ionioi Nisoi	621	777	25.1	103.7	184.6	77.9	363.3	629.3	73.2
Dytiki Ellada	991	1,113	12.3	174.1	162.9	-6.4	707.2	626.1	-11.5
Stereia Ellada	1,007	1,074	6.7	150.6	172.1	14.2	689.0	861.7	25.1
Peloponnisos	1,348	1,357	0.7	216.8	233.6	7.7	871.7	1,000.2	14.7
Attiki	2,274	2,683	18.0	386.2	533.4	38.1	1,669.3	2,354.4	41.0
Voreio Aigaio	384	404	5.2	61.2	45.9	-25.0	235.5	150.6	-36.0
Notio Aigaio	1,089	1,198	10.0	169.2	185.8	9.8	629.0	622.6	-1.0
Kriti	963	1,028	6.7	229.7	290.7	26.6	775.1	1,018.1	31.3
Greece, Total	12,441	13,272	6.7	2,315.7	2,695.4	16.4	10,405.7	11,706.4	12.5

**Provisional Data*

It should be noted that the increase or decrease in the number of the issued building permits does not imply, necessarily, an increase or decrease in the underlying surface or volume. This is due to individual building permits involving big surface or volume or to building permits that do not concern surface or volume.

Table 4. Private Building Activity, by Region (NUTS II), August 2015 - July 2016* and August 2016 - July 2017*

Region	Number of Building Permits			Surface (in thousand m ²)			Volume (in thousand m ³)		
	August - July		Change (%)	August - July		Change (%)	August - July		Change (%)
	2015-16	2016-17		2015-16	2016-17		2015-16	2016-17	
Anatoliki Makedonia, Thraki	537	457	-14.9	85.2	111.8	31.2	345.8	513.2	48.4
Kentriki Makedonia	1,852	1,697	-8.4	390.4	387.4	-0.8	2,232.5	2,026.2	-9.2
Dytiki Makedonia	245	299	22.0	55.4	74.1	33.8	258.3	391.8	51.7
Thessalia	654	678	3.7	169.8	185.6	9.3	1,021.6	962.3	-5.8
Ipeiros	421	463	10.0	84.5	108.1	28.0	336.3	463.7	37.9
Ionioi Nisoi	621	776	25.0	103.7	180.6	74.0	363.3	593.9	63.5
Dytiki Ellada	988	1,110	12.3	170.8	160.5	-6.0	691.8	616.4	-10.9
Stereia Ellada	1,004	1,065	6.1	150.3	170.5	13.4	687.9	855.7	24.4
Peloponnisos	1,346	1,344	-0.1	216.6	230.7	6.5	870.8	986.9	13.3
Attiki	2,264	2,670	17.9	372.5	511.6	37.3	1,622.7	2,262.5	39.4
Voreio Aigaio	382	401	5.0	56.9	45.4	-20.2	219.1	148.4	-32.3
Notio Aigaio	1,078	1,190	10.4	167.2	182.8	9.3	620.8	608.4	-2.0
Kriti	953	1,021	7.1	217.2	285.9	31.6	729.7	1,001.3	37.2
Greece, Total	12,345	13,171	6.7	2,240.6	2,635.1	17.6	10,000.7	11,430.6	14.3

**Provisional Data*

It should be noted that the increase or decrease in the number of the issued building permits does not imply, necessarily, an increase or decrease in the underlying surface or volume. This is due to individual building permits involving big surface or volume or to building permits that do not concern surface or volume.

Table 5. Total Building Activity, by Region, January - July 2016* and 2017*

Region	Number of Building Permits			Surface (in thousand m ²)			Volume (in thousand m ³)		
	January - July		Change (%)	January - July		Change (%)	January - July		Change (%)
	2016	2017		2016	2017		2016	2017	
Anatoliki Makedonia, Thraki	315	258	-18.1	45.3	59.1	30.2	180.9	262.0	44.8
Kentriki Makedonia	1,084	1,001	-7.7	266.6	258.3	-3.1	1,628.3	1,391.4	-14.5
Dytiki Makedonia	134	156	16.4	28.7	46.3	61.6	133.5	267.2	100.1
Thessalia	371	405	9.2	85.6	114.0	33.2	408.6	624.0	52.7
Ipeiros	217	272	25.3	46.7	70.2	50.3	171.4	312.4	82.3
Ionioi Nisoι	381	485	27.3	65.8	113.9	73.0	233.7	372.0	59.2
Dytiki Ellada	525	633	20.6	90.9	94.2	3.6	349.8	346.8	-0.8
Stereia Ellada	610	591	-3.1	83.0	97.9	18.0	350.9	476.4	35.7
Peloponnisos	752	784	4.3	120.4	127.4	5.8	499.8	546.8	9.4
Attiki	1,448	1,731	19.5	262.0	361.3	37.9	1,106.3	1,581.7	43.0
Voreio Aigaio	160	240	50.0	21.9	27.7	26.2	82.5	93.3	13.0
Notio Aigaio	562	672	19.6	84.6	85.2	0.7	344.1	288.3	-16.2
Kriti	515	592	15.0	140.5	165.3	17.7	471.8	538.1	14.0
Greece, Total	7,074	7,820	10.5	1,341.9	1,620.7	20.8	5,961.5	7,100.3	19.1

**Provisional Data*

It should be noted that the increase or decrease in the number of the issued building permits does not imply, necessarily, an increase or decrease in the underlying surface or volume. This is due to individual building permits involving big surface or volume or to building permits that do not concern surface or volume.

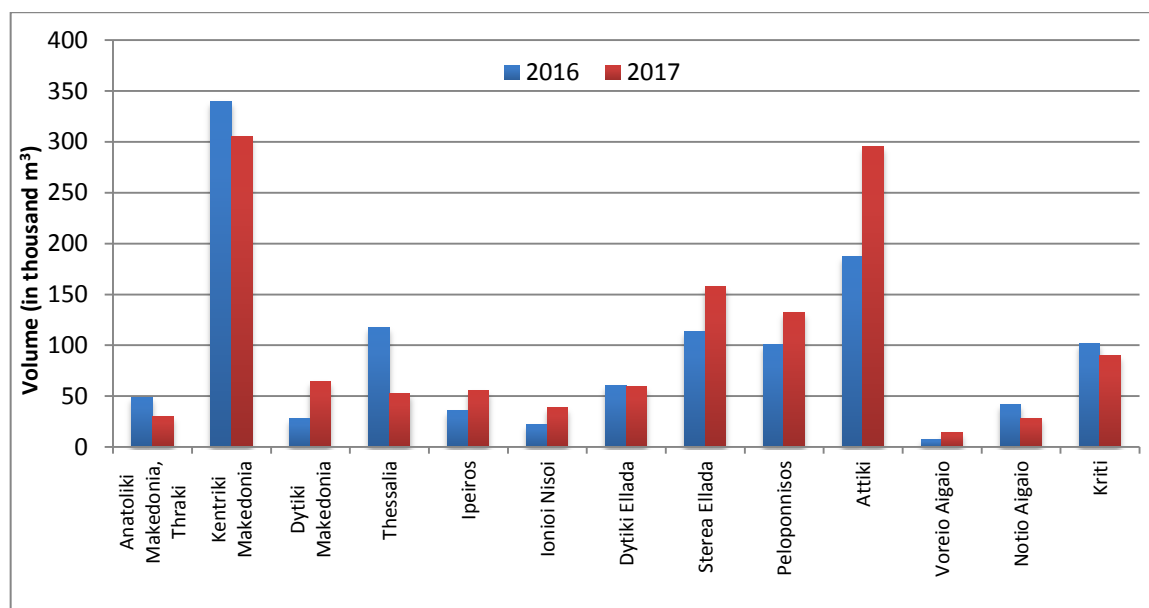
Table 6. Private Building Activity, by Region, January - July 2016* and 2017*

Region	Number of Building Permits			Surface (in thousand m ²)			Volume (in thousand m ³)		
	January - July		Change (%)	January - July		Change (%)	January - July		Change (%)
	2016	2017		2016	2017		2016	2017	
Anatoliki Makedonia, Thraki	313	250	-20.1	45.3	54.7	20.6	180.9	244.5	35.2
Kentriki Makedonia	1,067	992	-7.0	252.2	257.3	2.0	1,564.3	1,386.7	-11.4
Dytiki Makedonia	133	155	16.5	26.1	45.0	72.6	118.0	263.3	123.2
Thessalia	370	401	8.4	85.6	111.1	29.8	408.6	610.6	49.4
Ipeiros	211	270	28.0	43.3	67.5	55.9	156.9	296.6	89.0
Ionioi Nisoι	381	485	27.3	65.8	113.9	73.0	233.7	372.0	59.2
Dytiki Ellada	522	631	20.9	87.6	91.8	4.7	334.3	337.2	0.8
Stereia Ellada	608	588	-3.3	82.6	97.6	18.1	349.8	475.1	35.8
Peloponnisos	750	778	3.7	120.1	126.7	5.5	498.9	543.5	9.0
Attiki	1,441	1,723	19.6	257.0	358.6	39.5	1,088.4	1,568.8	44.1
Voreio Aigaio	159	237	49.1	21.9	27.3	24.3	82.5	91.0	10.3
Notio Aigaio	554	671	21.1	83.1	85.2	2.4	337.9	288.3	-14.7
Kriti	507	589	16.2	128.6	162.1	26.1	428.3	526.2	22.8
Greece, Total	7,016	7,770	10.7	1,299.3	1,598.5	23.0	5,782.6	7,003.7	21.1

**Provisional Data*

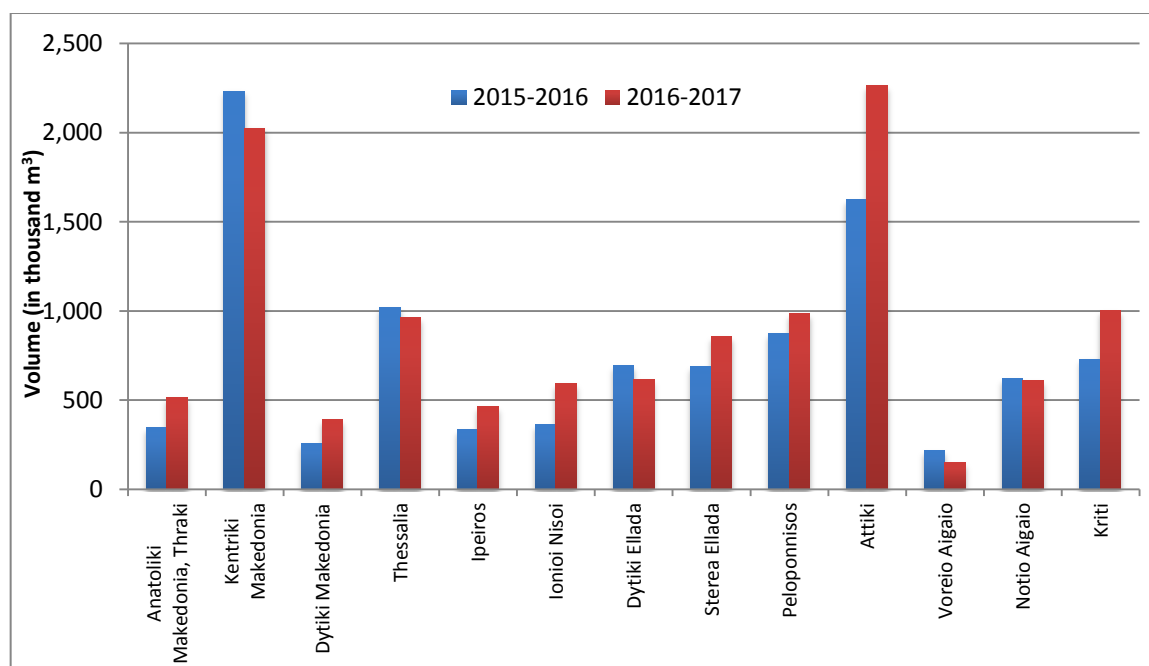
It should be noted that the increase or decrease in the number of the issued building permits does not imply, necessarily, an increase or decrease in the underlying surface or volume. This is due to individual building permits involving big surface or volume or to building permits that do not concern surface or volume.

Graph 1. Private Building Activity (volume), by Region (NUTS II), July 2016* and 2017 *



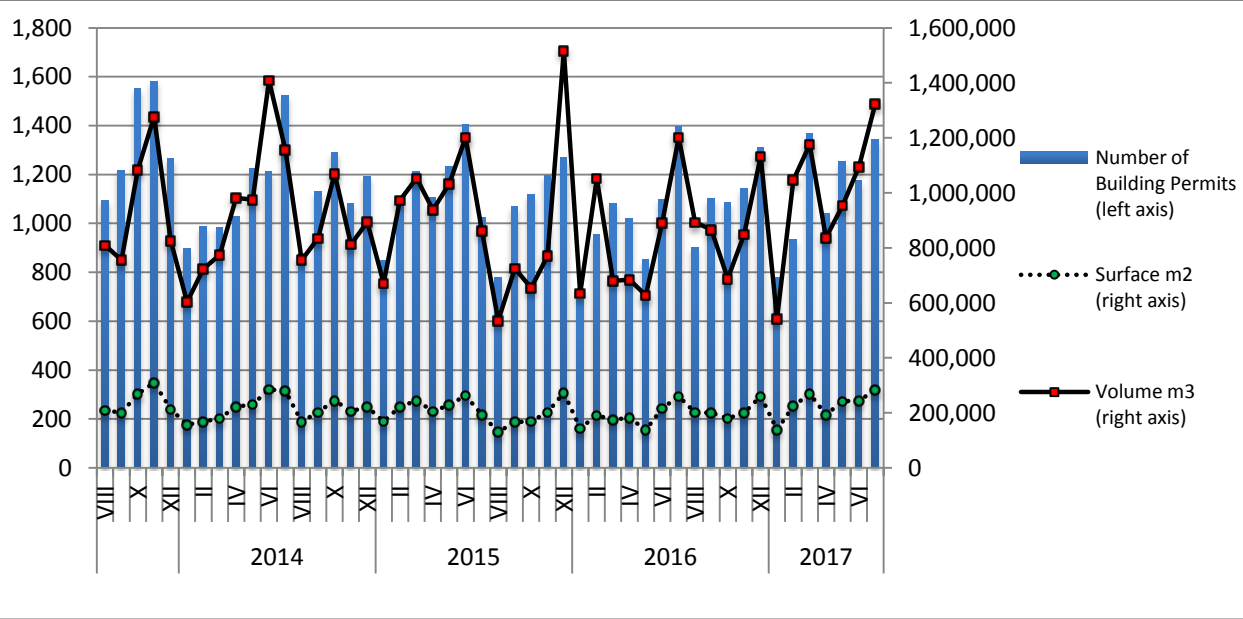
**Provisional Data*

Graph 2. Private Building Activity (volume), by Region (NUTS II), August 2015 - July 2016* and August 2016 - July 2017*



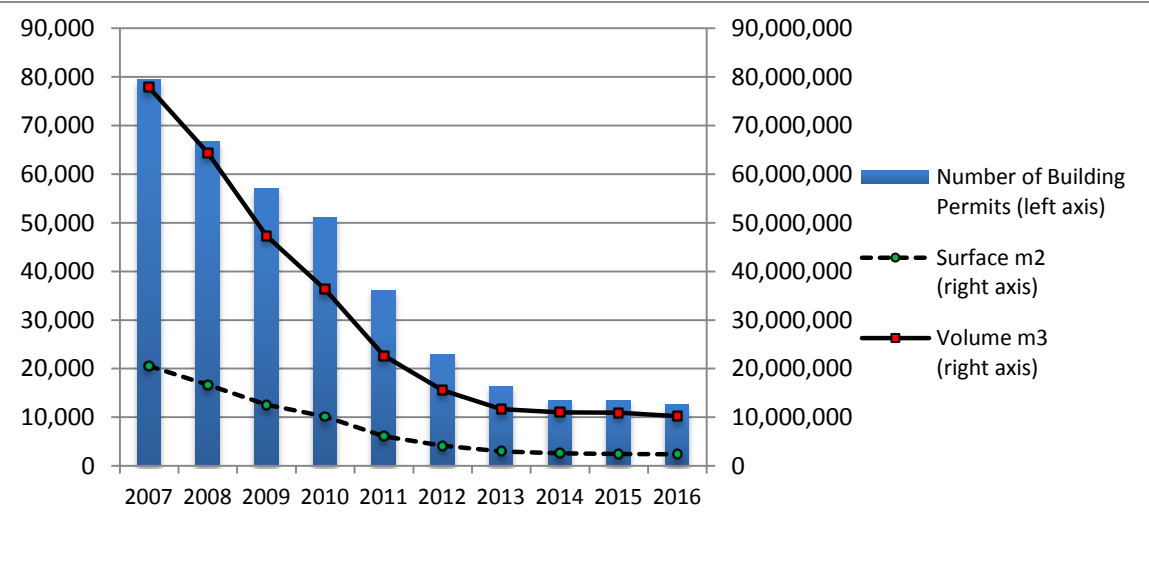
**Provisional Data*

Graph 3. Monthly Private Building Activity (August 2013 – July 2017*)



*Provisional data for July 2017

Graph 4. Annual Private Building Activity (2007 - 2016)



EXPLANATORY NOTE

Building Activity Survey	The Building Activity Survey has been providing data on a monthly and yearly basis, since 1964. The purpose of this survey is to register the total number of building permits issued by the responsible administrative authorities, which are devolved to complete the questionnaire. The survey covers all the features of building activity, such as the type of building permit, the type of construction, the type and the characteristics of the building and its auxiliary spaces, as well as building usage, surface, volume and value.
Legal Framework	The survey is fully harmonized with the European legislation. The primary legislative act is Regulation (EU) 1165/1998, as it was amended according to Regulation (EU) 1158/2005.
Reference Period	July 1, 2017 to July 31, 2017
Coverage	The survey is exhaustive and covers the total number of issued building permits across the country.
Definitions	<p>Building Permit refers to all types of building permits. These are permits for new buildings or permits for additions, repair, renovation, demolition, legitimization, amendment and modification of a building.</p> <p>The denotation of "built-property" is equal to "building".</p> <p>Building is every permanent and independent structure, which has walls and a roof and consists of one or more rooms and other complementary spaces. Normally, buildings feature four walls. However, a construction open from one or even two sides will be considered a building, as long as it has a roof.</p> <p>New building is any built-property raised on an uncovered site or in the place of an old building that has been demolished.</p> <p>Building Addition is every construction that adds building volume (space) to an existing building, in terms of surface, height or both and creates a residence, a shop or both.</p> <p>Building volume (the net building volume) refers to the area that is included between the external surface of the external walls, the lowest level (the basement or the sub-basement, if it exists) and the roof of the building. If there is an open ground floor not enclosed within walls between the lower floor and the roof, its volume is taken into account. The relevant authorities calculate the volume of the building during the issuing of the building permit.</p> <p>Surface of new-built property is considered to be the sum of each floor space along with the outer space of the outer walls.</p>
General Remark	Any delineation that may occur between the sum of sub totals and the totals is due to rounding.
References	More information (questionnaires, methodology) with regards to the Building Activity Survey is available on ELSTAT's web-site: www.statistics.gr , under the link: http://www.statistics.gr/en/statistics/-/publication/SOP03/-