



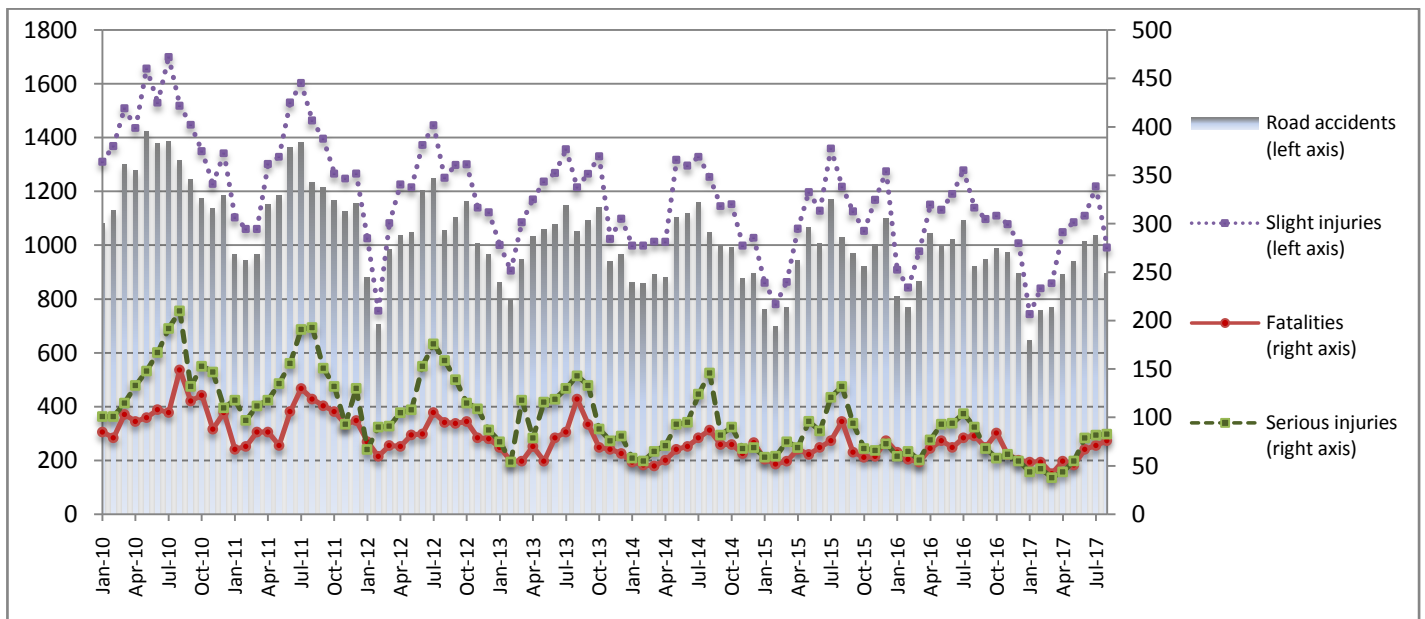
PRESS RELEASE

ROAD ACCIDENTS: August 2017

The Hellenic Statistical Authority (ELSTAT) announces provisional¹ data on Road Accidents for August 2017. In particular, the road traffic accidents which occurred in Greece, resulting in death or injury, decreased by 2.8% in comparison with the corresponding month of 2016 (897 road accidents in August 2017, against 923 road accidents in August 2016).

The casualties of the injury-causing accidents that occurred in August 2017 were as follows: 76 deaths, 83 serious injuries and 992 slight injuries. In contrast, in August 2016 the corresponding figures were: 81 deaths, 90 serious injuries and 1,140 slight injuries. Therefore, road accident casualties in August 2017 decreased by 6.2% for deaths, by 7.8% for serious injuries and by 13.0% for slight injuries.

**Graph 1: Road traffic accidents and casualties,
January 2010 - August 2017**



Provisional data: Nov 16 – August 17

Information:

Social Statistics Division
Justice and Public Order Statistics Section
D. Athanasopoulou
Tel: +30 213 1352767
Fax : +30 213 1352764
e-mail: d.athanasopoulou@statistics.gr

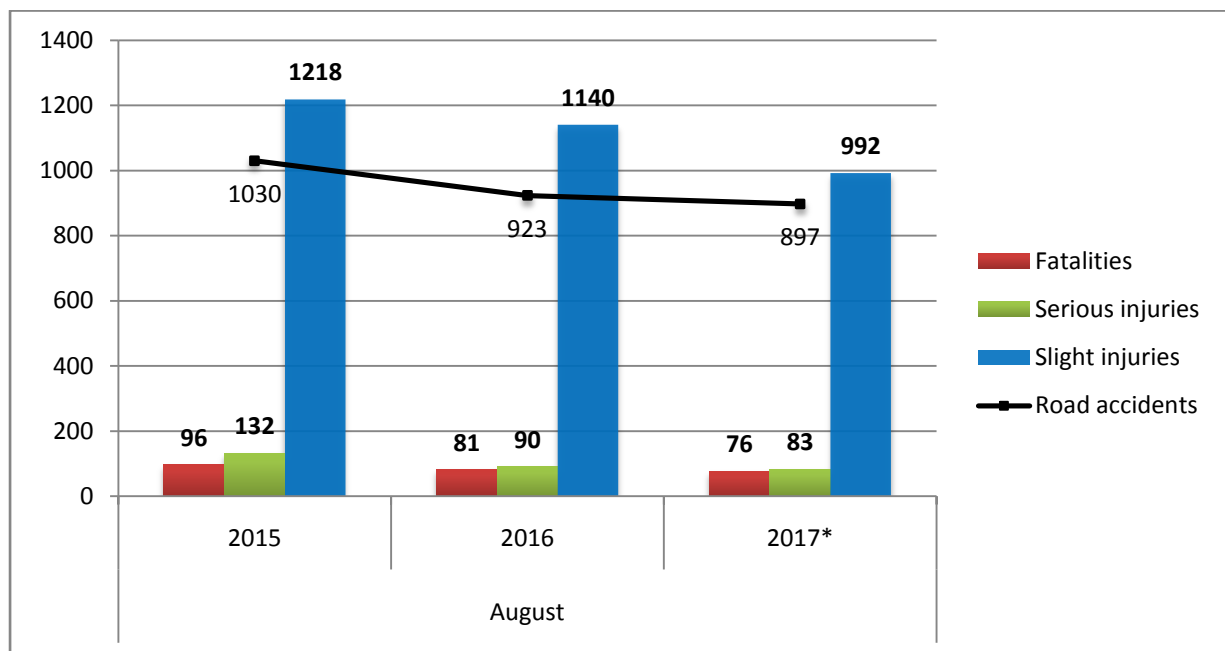
¹ Data for the reference year are provisional until the finalisation of the annual data, which become final 10 months after the end of the reference year. During these 10 months the provisional data are updated on the basis of the data of the Road Accident Forms which are transmitted to ELSTAT by Police Authorities.

Table 1: Road traffic accidents and casualties, August 2015-2017*

	August				
	2015	2016	2016/2015 (%)	2017*	2017*/2016 (%)
Road accidents	1,030	923	-10.4%	897	-2.8%
Fatalities	96	81	-15.6%	76	-6.2%
Total injuries	1,350	1,230	-8.9%	1,075	-12.6%
Serious injuries	132	90	-31.8%	83	-7.8%
Slight injuries	1,218	1,140	-6.4%	992	-13.0%

* Provisional data

Graph 2: Road traffic accidents and casualties, August 2015-2017*



* Provisional data

Table 2: Road traffic accidents and casualties, by region and department, August 2016 – 2017*

Region and Department	Road accidents			Fatalities			Serious injuries			Slight injuries		
	2016	2017*	%	2016	2017*	%	2016	2017*	%	2016	2017*	%
Greece Total	923	897	-2.8%	81	76	-6.2%	90	83	-7.8%	1,140	992	-13.0%
Anatoliki Makedonia, Thraki (East Macedonia and Thrace)	61	45	-26.2%	8	4	-50.0%	5	12	140.0%	73	60	-17.8%
Drama	11	3	-72.7%	0	1		0	0		15	4	
Evros	12	8	-33.3%	2	1		1	2		13	7	
Kavala	22	19	-13.6%	2	2		2	5		32	30	
Xanthi	5	8	60.0%	1	0		2	4		3	9	
Rodopi	11	7	-36.4%	3	0		0	1		10	10	
Kentriki Makedonia (Central Macedonia)	196	161	-17.9%	9	7	-22.2%	6	11	83.3%	269	186	-30.9%
Imathia	5	6	20.0%	1	0		0	2		10	5	
Thessaloniki	143	111	-22.4%	2	2		3	1		184	133	
Kilkis	9	5	-44.4%	0	0		0	0		16	5	
Pella	5	2	-60.0%	1	0		0	0		5	2	
Pieria	2	5	150.0%	0	2		0	2		4	2	
Serres	9	4	-55.6%	3	1		2	0		10	3	
Chalkidiki	23	28	21.7%	2	2		1	6		40	36	
Dytiki Makedonia (West Macedonia)	8	7	-12.5%	0	4	-	1	1	0.0%	15	5	-66.7%
Grevena	2	1	-50.0%	0	1		0	0		2	1	
Kastoria	0	2	-	0	1		0	1		0	2	
Kozani	6	3	-50.0%	0	1		1	0		13	2	
Florina	0	1	-	0	1		0	0		0	0	
Ipeiros (Epirus)	20	11	-45.0%	6	1	-83.3%	2	3	50.0%	22	12	-45.5%
Arta	2	1	-50.0%	1	0		0	1		3	3	
Thesprotia	8	4	-50.0%	2	1		1	1		8	2	
Ioannina	3	3	0.0%	1	0		0	1		2	2	
Preveza	7	3	-57.1%	2	0		1	0		9	5	
Thessalia (Thessaly)	24	18	-25.0%	6	5	-16.7%	3	4	33.3%	33	22	-33.3%
Karditsa	4	5	25.0%	1	0		0	1		5	5	
Larissa	10	7	-30.0%	3	3		1	0		13	8	
Magnissia	5	3	-40.0%	1	1		2	1		4	4	
Trikala	5	3	-40.0%	1	1		0	2		11	5	
Ionioi Nisoi (Ionian Islands)	28	24	-14.3%	3	7	133.3%	1	1	0.0%	27	20	-25.9%
Zakynthos	8	6	-25.0%	2	4		1	0		5	2	
Kerkyra	12	4	-66.7%	1	0		0	0		12	6	
Kefallinia	3	5	66.7%	0	1		0	0		5	5	
Lefkada	5	9	80.0%	0	2		0	1		5	7	

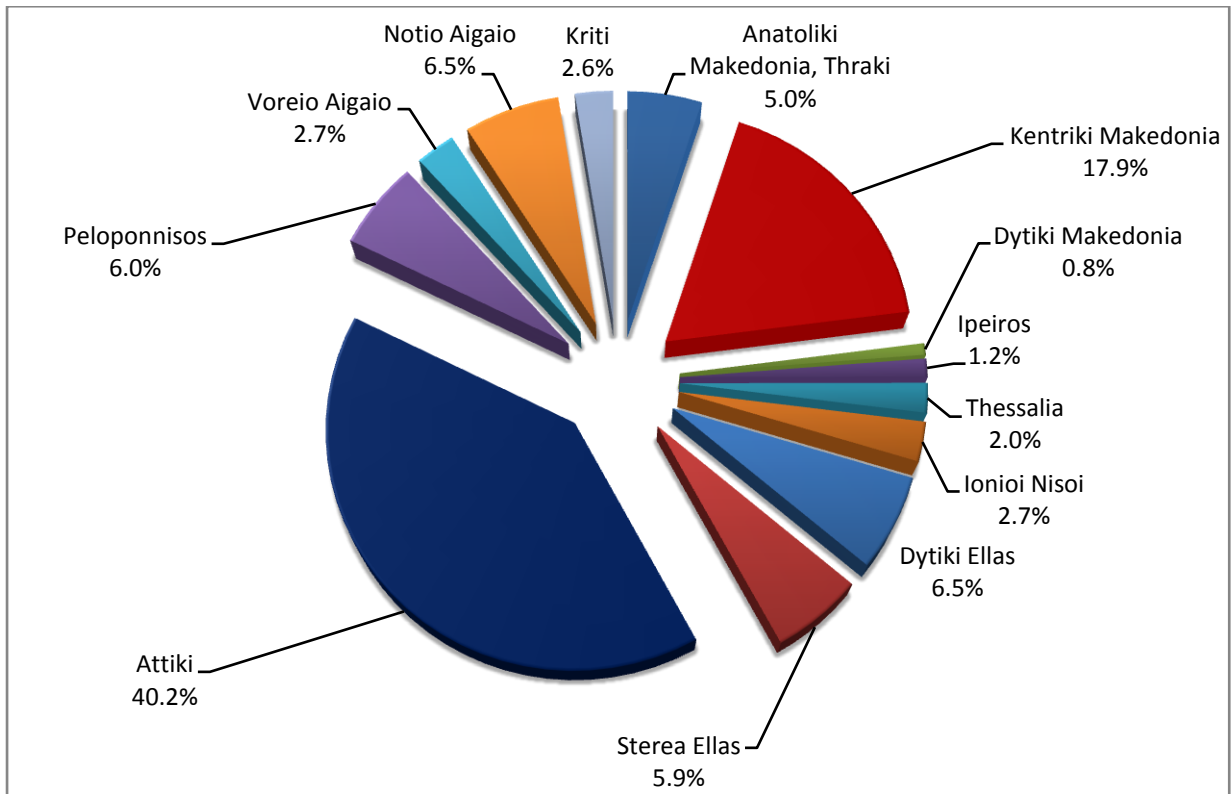
* Provisional data

Table 2: Road traffic accidents and casualties, by region and department, August 2016 – 2017* (Continued)

Region and Department	Road accidents			Fatalities			Serious injuries			Slight injuries		
	2016	2017*	%	2016	2017*	%	2016	2017*	%	2016	2017*	%
Dytiki Ellas (West Greece)	57	58	1.8%	9	6	-33.3%	13	4	-69.2%	61	71	16.4%
Etolia & Akarnania	13	20	53.8%	3	3		4	1		12	20	
Achaia	36	28	-22.2%	3	1		8	1		41	42	
Iliia	8	10	25.0%	3	2		1	2		8	9	
Stereia Ellas	46	53	15.2%	6	5	-16.7%	9	2	-77.8%	65	63	-3.1%
Viotia	4	9	125.0%	0	3		0	1		5	11	
Evia	24	19	-20.8%	2	1		5	0		37	21	
Evrytania	0	3	-	0	0		0	0		0	3	
Fthiotida	11	19	72.7%	3	1		1	1		11	25	
Fokida	7	3	-57.1%	1	0		3	0		12	3	
Attiki (Attica)	310	361	16.5%	12	17	41.7%	18	21	16.7%	384	381	-0.8%
Peloponnisos (Peloponnese)	73	54	-26.0%	9	5	-44.4%	8	4	-50.0%	100	63	-37.0%
Argolida	6	12	100.0%	2	0		2	0		3	14	
Arkadia	18	3	-83.3%	1	1		0	0		28	9	
Korinthia	24	21	-12.5%	2	2		3	2		33	22	
Lakonia	10	9	-10.0%	0	2		2	2		16	7	
Messinia	15	9	-40.0%	4	0		1	0		20	11	
Voreio Aigaio (North Aegean)	20	24	20.0%	2	1	-50.0%	4	2	-50.0%	20	33	65.0%
Lesvos	5	6	20.0%	2	1		0	1		4	6	
Samos	9	10	11.1%	0	0		2	1		10	14	
Chios	6	8	33.3%	0	0		2	0		6	13	
Notio Aigaio (South Aegean)	52	58	11.5%	8	5	-37.5%	11	12	9.1%	43	54	25.6%
Dodekanissos	27	29	7.4%	5	3		5	3		21	28	
Kyklades	25	29	16.0%	3	2		6	9		22	26	
Kriti (Crete)	28	23	-17.9%	3	9	200.0%	9	6	-33.3%	28	22	-21.4%
Iraklio	14	6	-57.1%	1	3		7	3		6	5	
Lassithi	3	4	33.3%	0	1		0	1		9	3	
Rethymno	4	3	-25.0%	1	1		0	0		5	2	
Chania	7	10	42.9%	1	4		2	2		8	12	

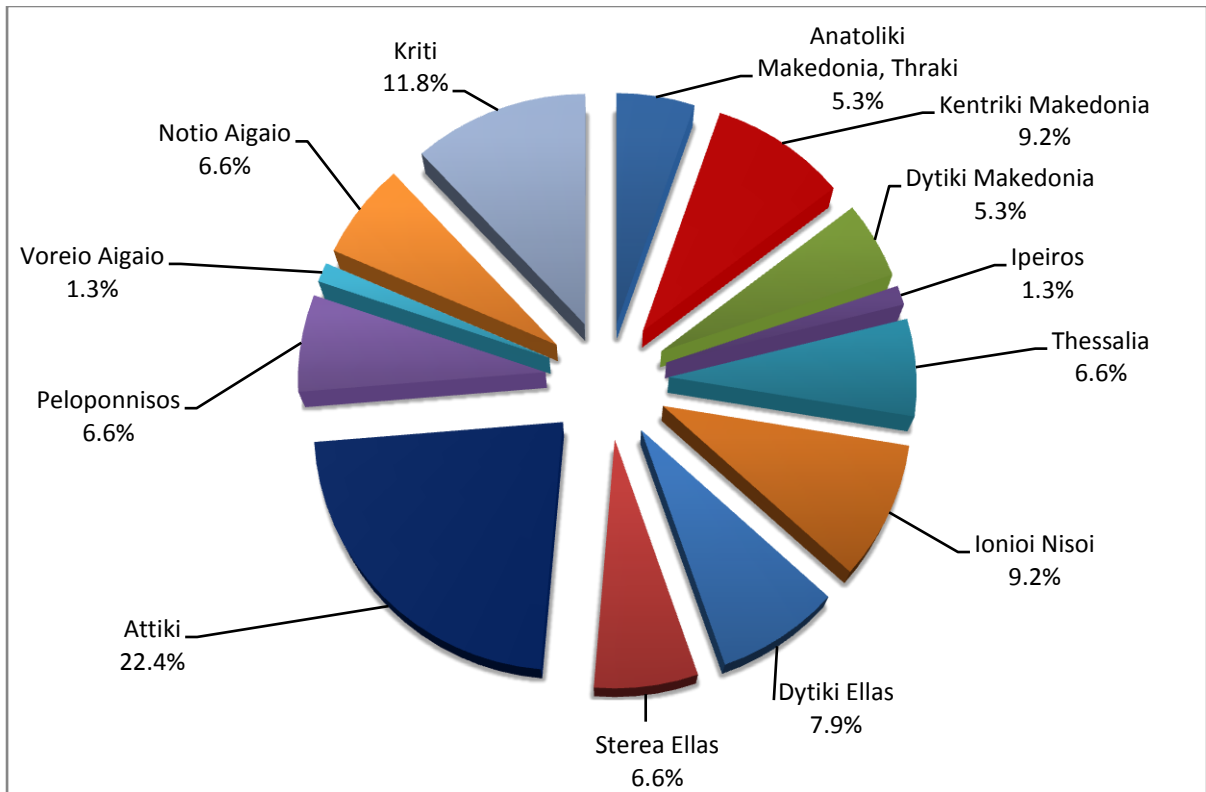
* Provisional data

Graph 3: Road traffic accidents by region, August 2017 *



* Provisional data

Graph 4: Fatalities by region, August 2017 *



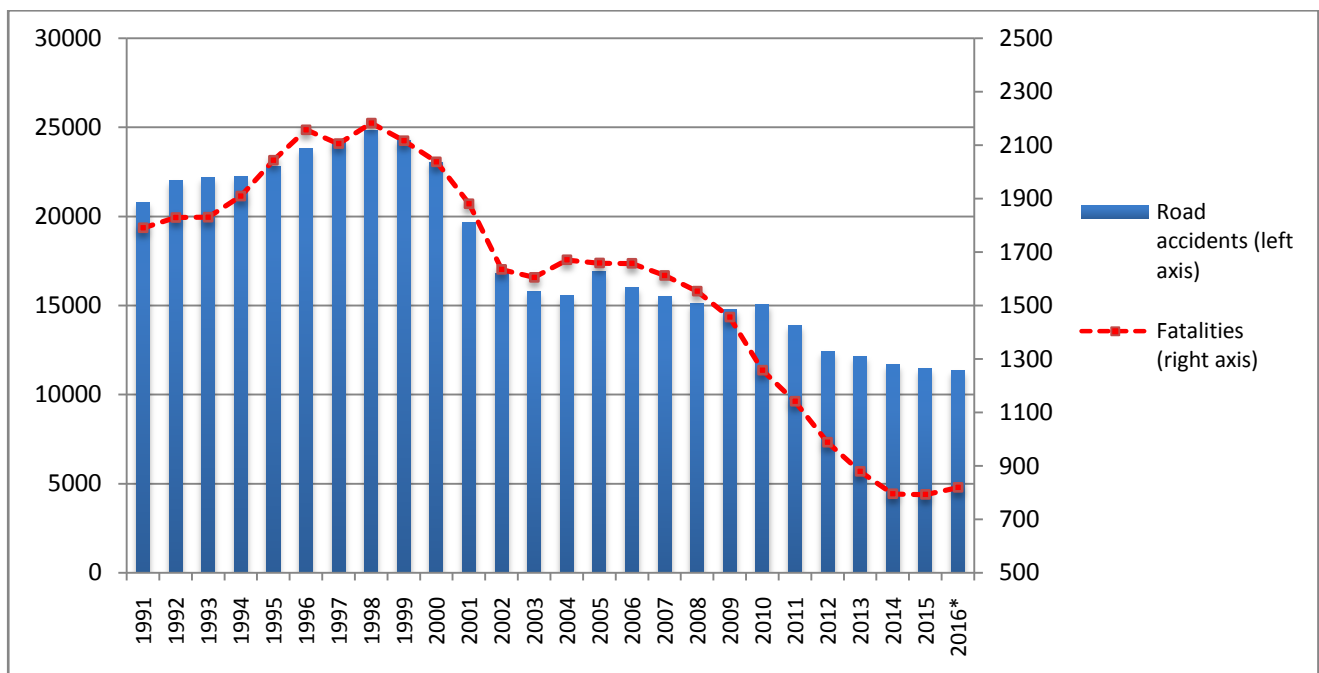
* Provisional data

Table 3: Road Traffic Accidents and casualties for the period January - August 2015, 2016 and 2017*

	2015		2016		2017 *
	January - August	Total year	January - August	Total year *	January - August
Road Accidents	7,446	11,440	7,522	11,327	6,952
<i>Annual Change (%)</i>			1.0%	-1.0%	-7.6%
Fatalities	534	793	548	819	470
<i>Annual Change (%)</i>			2.6%	3.3%	-14.2%
Serious injuries	698	999	639	882	472
<i>Annual Change (%)</i>			-8.5%	-11.7%	-26.1%
Slight injuries	8,473	13,097	8,623	12,918	7,899
<i>Annual Change (%)</i>			1.8%	-1.4%	-8.4%

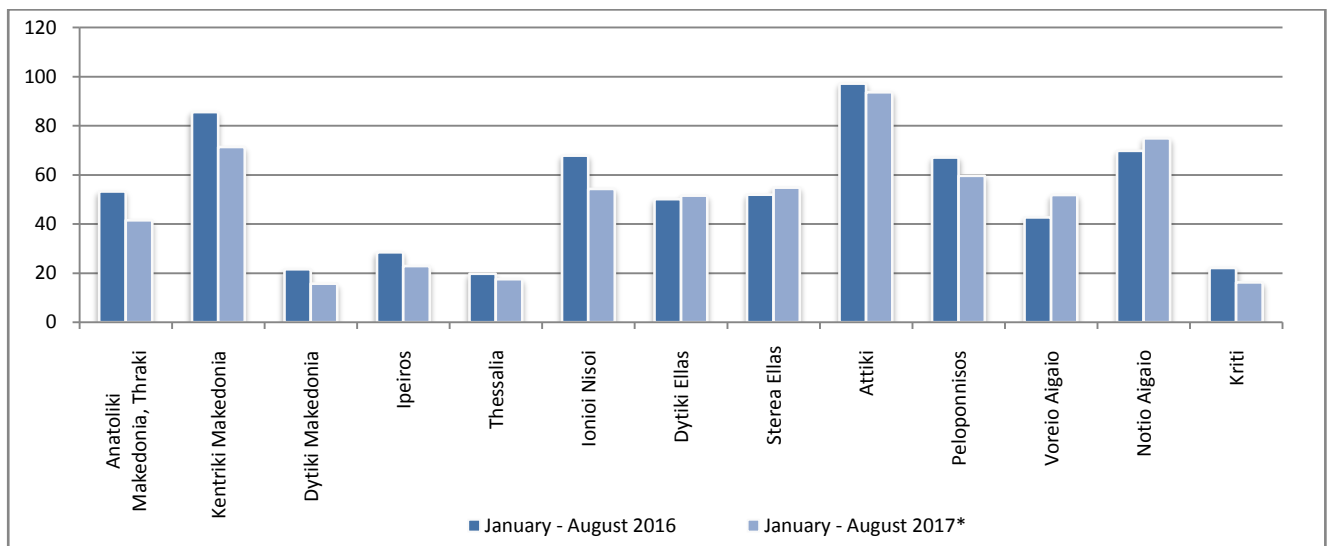
* Provisional data

Graph 5: Total Road traffic accidents and fatalities, 1991-2016*



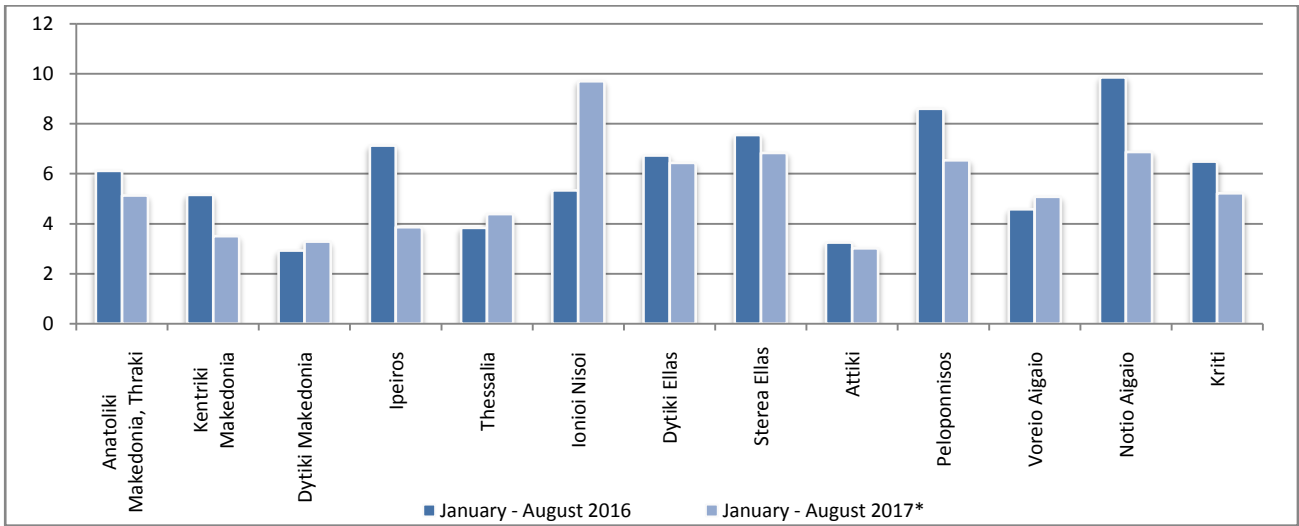
* Provisional data: Nov 16 – Dec 16

Graph 6: Road accidents per 100,000 inhabitants

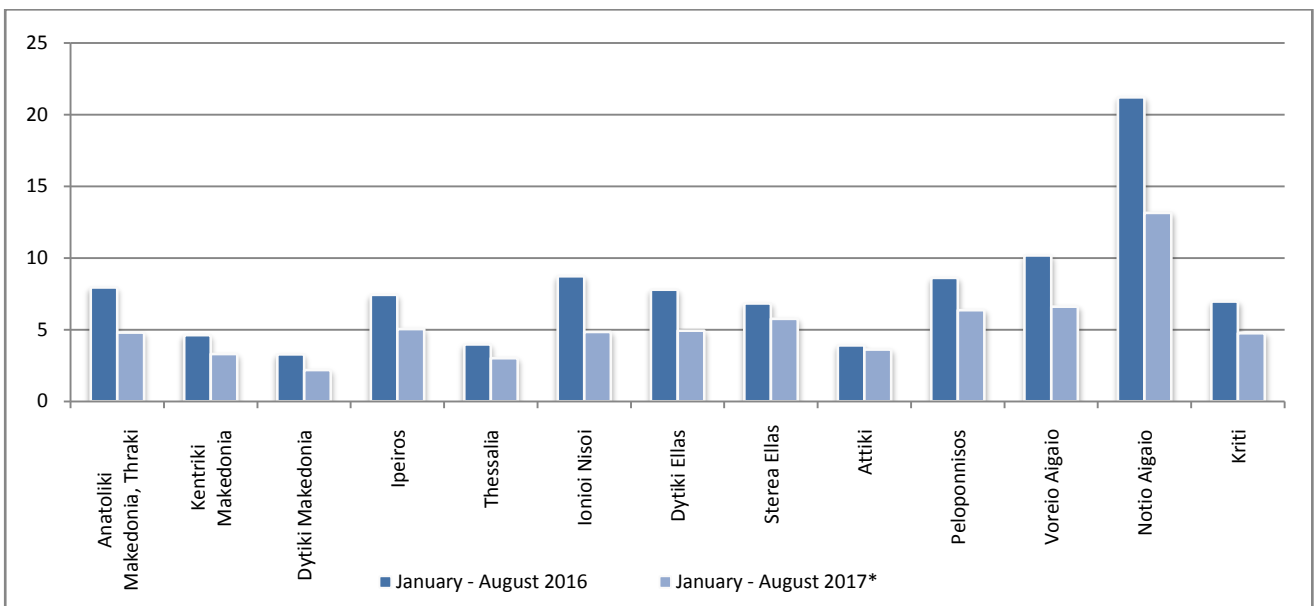


* Provisional data

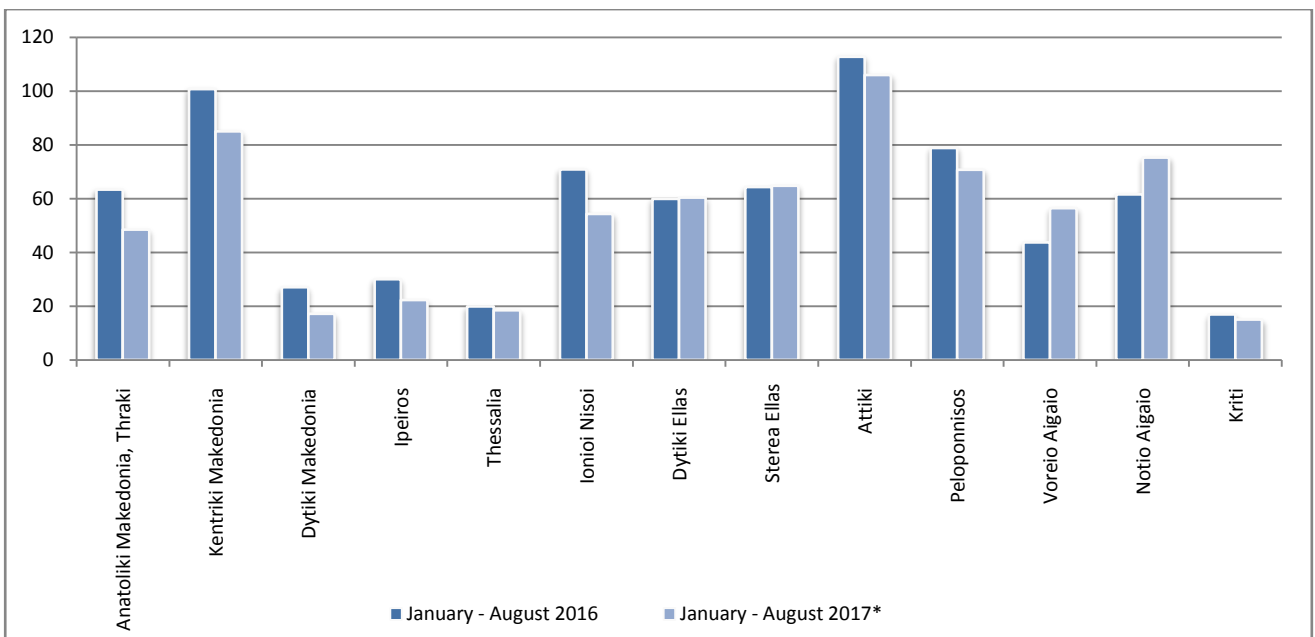
Graph 7: Fatalities per 100,000 inhabitants



Graph 8: Serious injuries per 100,000 inhabitants



Graph 9: Slight injuries per 100,000 inhabitants



* Provisional data

Explanatory Notes

Survey on Road Accidents The survey on road accidents is conducted on a monthly basis and it records, for each department of Greece and for each month separately, the number of accidents resulting in death or injury, as well as the number of persons injured by categories (drivers, passengers, pedestrians).

On a yearly basis, road accidents are further analyzed. The competent agencies for filling in/collecting the forms on road accidents are the local Police Authorities and the local Port Authorities of Greece.

The lower level of analysis for the place where an injury road accident occurred is the settlement (oikismos), which is described by a 8-digit geographic code. Data are collected on a monthly basis. The main variables are the following: place of accident, kind of road, casualties, conditions of road surface and type of road.

Legal basis The Survey on Road Traffic Accidents is governed by Council Decision 93/704 of the European Community.

Reference Period Monthly.

Availability of Data Provisional data are available 2 months after the reference month.
Final data are available 10 months after the reference year.

National Definitions **Road accident** (injury accident): Any accident involving at least one road motor vehicle in motion on a public road or square to which the public has access (excluding yards, industrial sites or vehicle depot of public transport enterprises), resulting in at least one injured or killed person. Accidents with only material damages are not included.

Fatality (Death): Any person killed immediately or dying within 30 days as a result of an injury accident (This national definition applies since 01.01.1996)

Person injured: Any person who sustained an injury as result of an injury accident, and who normally needs medical treatment.

Serious injury: Any person who sustained an injury as result of an injury accident, such as brain damages, mutilation, multiple injuries, which may result in lack of awareness or which are life-threatening.

Slight injury: Any person injured who sustained minor and not life-threatening injuries.

Vehicle: Include motor vehicles, trolleybuses, motorcycles, bicycles, motorbikes, agricultural and road making machines, animal and hand-drawn vehicles. Railway vehicles are excluded, unless the road accident involves at least one of the aforementioned types of vehicles and therefore, railway vehicles are considered vehicles.

Methodology The forms of the survey are filled in by the local Police Authorities and the local Port Authorities as well.

References More information about road accidents is available on ELSTAT's website and more specifically at the link: www.statistics.gr > Population & Social Conditions > Accidents > Road Traffic Accidents.

It should be noted that previous press releases and time series are available on ELSTAT's website: www.statistics.gr