



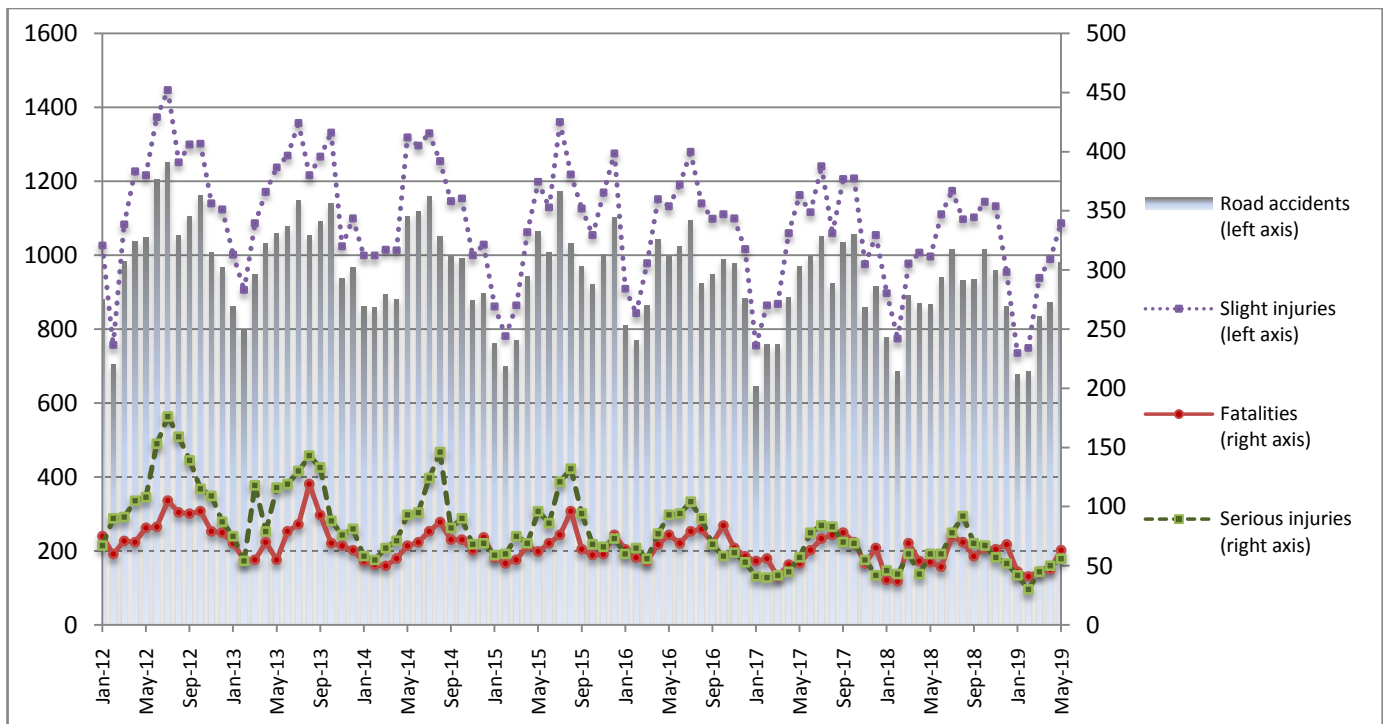
PRESS RELEASE

ROAD TRAFFIC ACCIDENTS: May 2019

The Hellenic Statistical Authority (ELSTAT) announces provisional¹ data on Road Traffic Accidents for May 2019. In particular, the road traffic accidents which occurred in Greece, resulting in death or injury, increased by 13.2% in comparison with the corresponding month of 2018 (980 road accidents in May 2019, against 866 road accidents in May 2018).

The casualties of the injury-causing accidents that occurred in May 2019 were as follows: 63 deaths, 56 serious injuries and 1,086 slight injuries. In contrast, in May 2018 the corresponding figures were: 53 deaths, 60 serious injuries and 996 slight injuries. Therefore, road accident casualties in May 2019 increased by 18.9% for deaths, decreased by 6.7% for serious injuries and increased by 9.0% for slight injuries.

**Graph 1: Road traffic accidents and casualties,
January 2012 - May 2019**



Provisional data for the period October 2018 - May 2019

Information:

Social Statistics Division
Justice and Public Order Statistics Section
D. Athanasopoulou
Tel: +30 213 1352767, Fax : +30 213 1352764
e-mail: d.athanasopoulou@statistics.gr

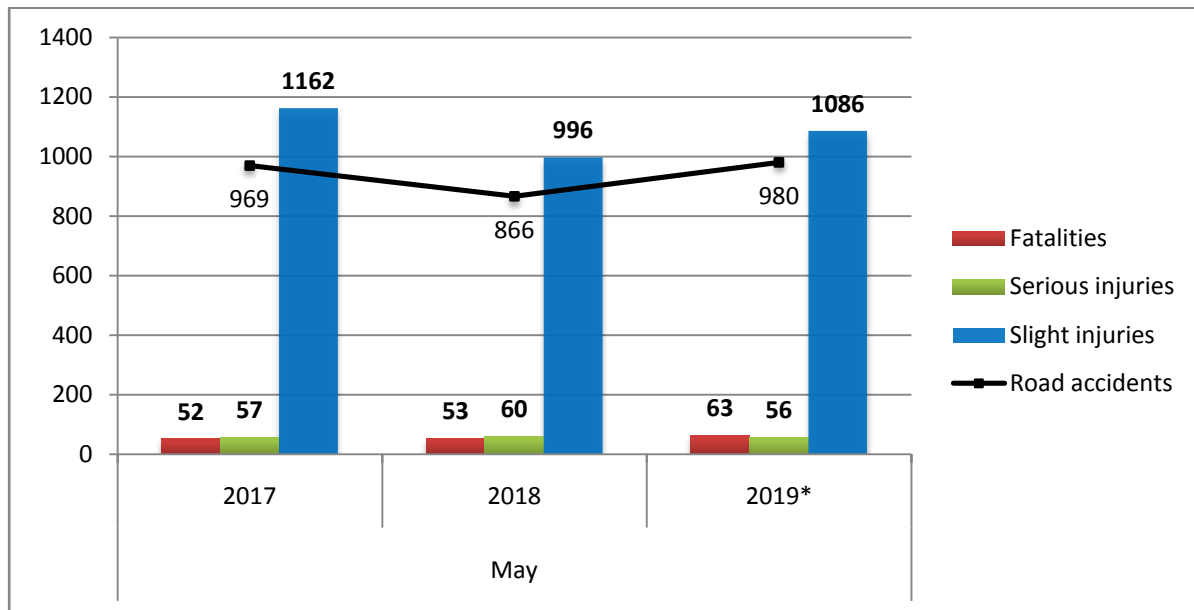
¹ Data for the reference year are provisional until the finalisation of the annual data, which become final 10 months after the end of the reference year. During these 10 months the provisional data are updated on the basis of the data of the Road Accident Forms which are transmitted to ELSTAT by Police Authorities.

Table 1: Road traffic accidents and casualties, May 2017 - 2019*

	May				
	2017	2018	2018/2017 (%)	2019*	2019*/2018 (%)
Road accidents	969	866	-10.6	980	13.2
Fatalities	52	53	1.9	63	18.9
Total injuries	1,219	1,056	-13.4	1,142	8.1
Serious injuries	57	60	5.3	56	-6.7
Slight injuries	1,162	996	-14.3	1,086	9.0

* Provisional data

Graph 2: Road traffic accidents and casualties, May 2017 - 2019*



* Provisional data

Table 2: Road traffic accidents and casualties, by region and department, May 2018 and 2019*

Region and department	Road accidents			Fatalities			Serious injuries			Slight injuries		
	2018	2019*	%	2018	2019*	%	2018	2019*	%	2018	2019*	%
Greece Total	866	980	13.2	53	63	18.9	60	56	-6.7	996	1,086	9.0
Anatoliki Makedonia and Thraki (East Macedonia and Thrace)	33	37	12.1	2	2	0.0	5	2	-60.0	41	44	7.3
Drama	9	8	-11.1	2	0		0	0		10	10	
Evros	5	5	0.0	0	1		1	0		4	5	
Kavala	8	14	75.0	0	0		1	1		13	15	
Xanthi	5	4	-20.0	0	0		2	1		8	4	
Rodopi	6	6	0.0	0	1		1	0		6	10	
Kentriki Makedonia (Central Macedonia)	146	190	30.1	10	13	30.0	6	8	33.3	160	215	34.4
Imathia	1	6	500.0	0	4		1	0		0	8	
Thessaloniki	121	162	33.9	5	6		2	5		137	190	
Kilkis	6	3	-50.0	1	1		0	1		7	2	
Pella	2	6	200.0	0	0		0	0		4	6	
Pieria	2	3	50.0	0	1		0	0		2	2	
Serres	4	5	25.0	2	1		2	1		2	3	
Chalkidiki	10	5	-50.0	2	0		1	1		8	4	
Dytiki Makedonia (West Macedonia)	5	7	40.0	0	3	-	0	1	-	5	6	20.0
Grevena	0	1	-	0	0		0	0		0	1	
Kastoria	1	1	0.0	0	1		0	0		1	2	
Kozani	4	3	-25.0	0	1		0	1		4	2	
Florina	0	2	-	0	1		0	0		0	1	
Ipeiros (Epirus)	13	6	-53.8	0	3	-	4	0	-100.0	11	7	-36.4
Arta	1	1	0.0	0	1		0	0		1	1	
Thesprotia	4	2	-50.0	0	0		2	0		4	3	
Ioannina	4	2	-50.0	0	1		1	0		3	3	
Preveza	4	1	-75.0	0	1		1	0		3	0	
Thessalia (Thessaly)	21	17	-19.0	6	3	-50.0	5	2	-60.0	24	14	-41.7
Karditsa	3	2	-33.3	1	1		0	0		3	2	
Larissa	10	8	-20.0	3	2		0	1		15	5	
Magnissia	3	4	33.3	1	0		1	0		1	5	
Trikala	5	3	-40.0	1	0		4	1		5	2	
Ionian Nisia (Ionian Islands)	14	13	-7.1	1	2	100.0	1	0	-100.0	18	14	-22.2
Zakynthos	6	5	-16.7	1	1		1	0		7	7	
Kerkyra	7	3	-57.1	0	1		0	0		10	2	
Kefallinia	1	3	200.0	0	0		0	0		1	3	
Lefkada	0	2	-	0	0		0	0		0	2	

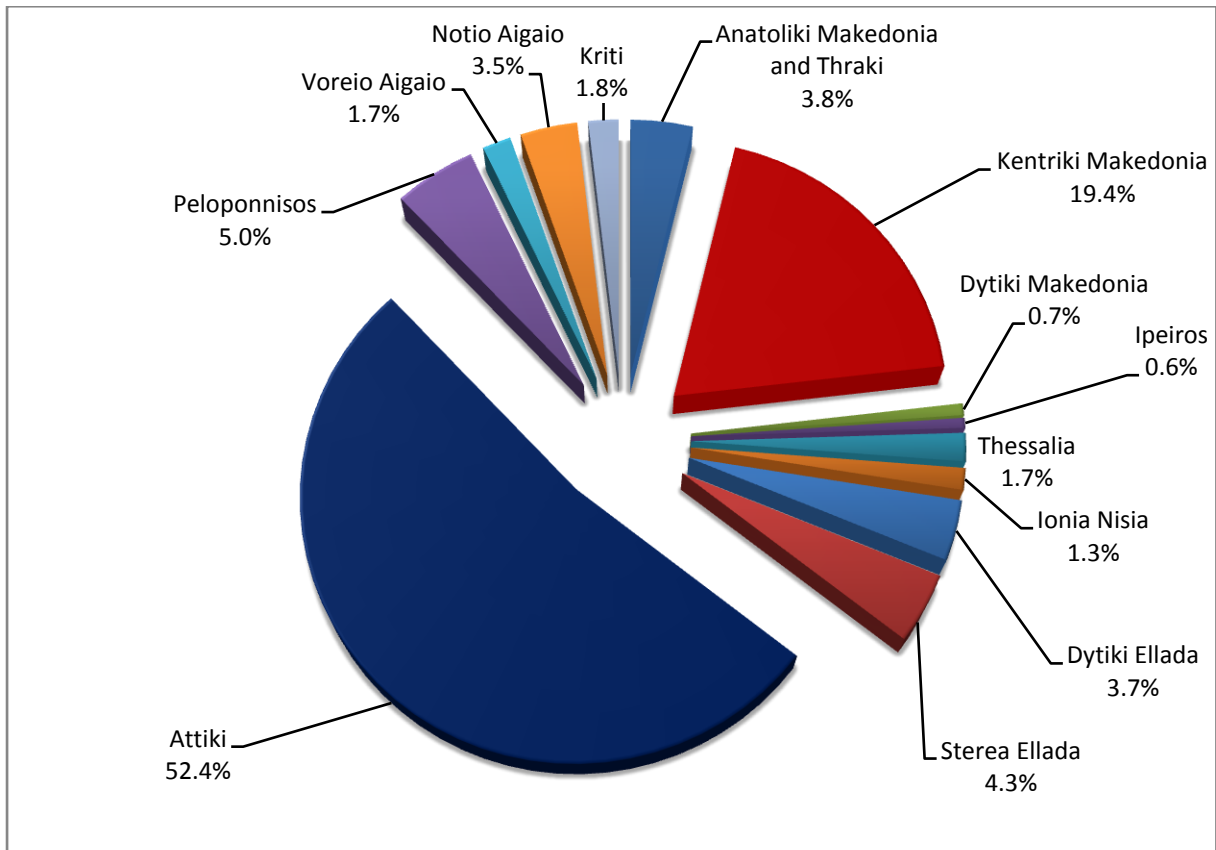
* Provisional data

Table 2: Road traffic accidents and casualties, by region and department, May 2018 and 2019* (Continued)

Region and department	Road accidents			Fatalities			Serious injuries			Slight injuries		
	2018	2019*	%	2018	2019*	%	2018	2019*	%	2018	2019*	%
Dytiki Ellada (West Greece)	28	36	28.6	1	6	500.0	2	3	50.0	34	46	35.3
Etolia & Akarnania	7	9	28.6	0	1		1	0		7	11	
Achaia	16	22	37.5	0	2		1	3		21	27	
Ilia	5	5	0.0	1	3		0	0		6	8	
Stereia Ellada	43	42	-2.3	6	2	-66.7	3	5	66.7	47	50	6.4
Viotia	11	5	-54.5	1	0		1	1		15	5	
Evia	18	18	0.0	3	1		1	2		17	20	
Evrytania	1	1	0.0	0	0		0	0		1	1	
Fthiotida	9	13	44.4	2	0		1	2		7	17	
Fokida	4	5	25.0	0	1		0	0		7	7	
Attiki (Attica)	436	514	17.9	16	11	-31.3	13	16	23.1	520	559	7.5
Peloponnisos (Peloponnese)	52	49	-5.8	4	6	50.0	5	7	40.0	60	62	3.3
Argolida	12	10	-16.7	1	1		1	1		12	9	
Arkadia	11	9	-18.2	1	2		1	0		14	23	
Korinthia	14	17	21.4	1	0		1	5		20	19	
Lakonia	7	5	-28.6	0	2		2	0		7	3	
Messinia	8	8	0.0	1	1		0	1		7	8	
Voreio Aigaio (North Aegean)	22	17	-22.7	1	4	300.0	6	3	-50.0	19	18	-5.3
Lesvos	11	12	9.1	0	4		2	3		10	13	
Samos	6	4	-33.3	0	0		1	0		6	4	
Chios	5	1	-80.0	1	0		3	0		3	1	
Notio Aigaio (South Aegean)	41	34	-17.1	4	3	-25.0	8	4	-50.0	44	37	-15.9
Dodekanissos	19	14	-26.3	4	3		5	2		20	13	
Kyklades	22	20	-9.1	0	0		3	2		24	24	
Kriti (Crete)	12	18	50.0	2	5	150.0	2	5	150.0	13	14	7.7
Iraklio	9	10	11.1	1	0		2	5		9	8	
Lassithi	0	3	-	0	1		0	0		0	2	
Rethymno	1	0	-100.0	0	0		0	0		1	0	
Chania	2	5	150.0	1	4		0	0		3	4	

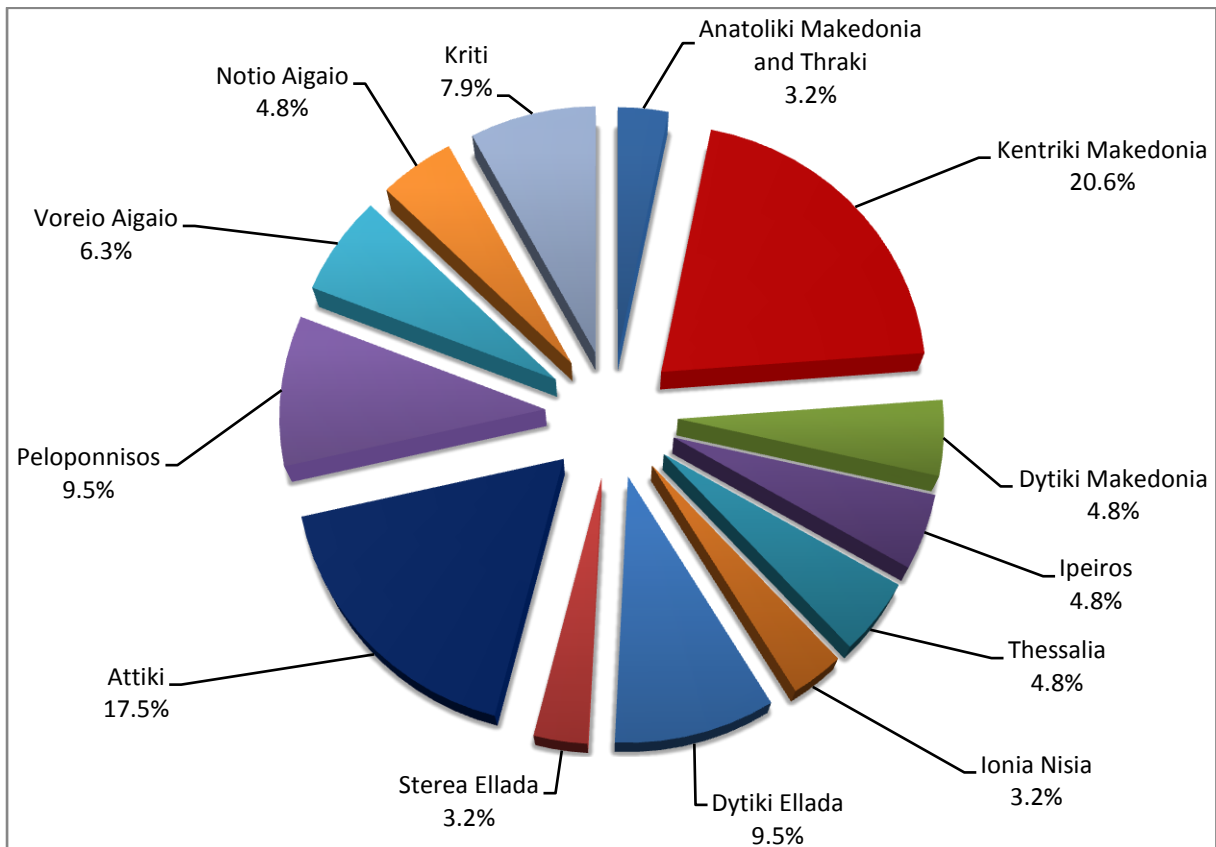
* Provisional data

Graph 3: Road traffic accidents by region, May 2019 *



* Provisional data

Graph 4: Fatalities by region, May 2019 *



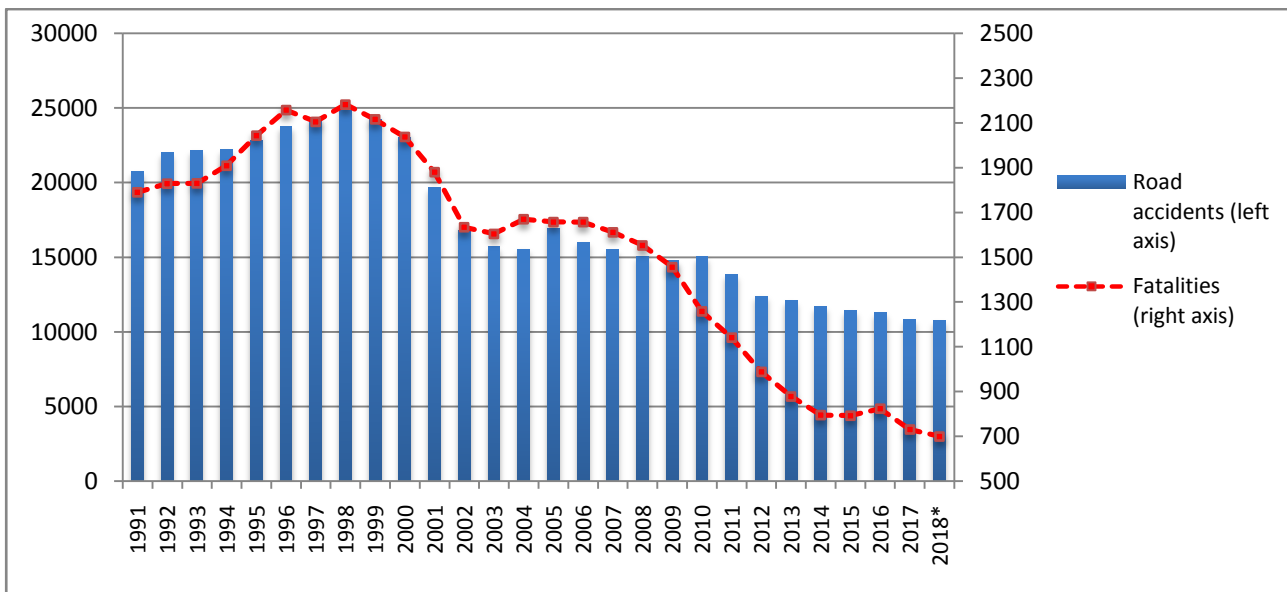
* Provisional data

Table 3: Road traffic accidents and casualties, January - May 2017 - 2019*

	2017		2018		2019 *
	January - May	Total year	January - May	Total year*	January - May
Road accidents	4,015	10,848	4,087	10,743	4,045
<i>Annual change (%)</i>			1.8	-1.0	-1.0
Fatalities	254	731	251	700	241
<i>Annual change (%)</i>			-1.2	-4.2	-4.0
Serious injuries	225	706	252	727	223
<i>Annual change (%)</i>			12.0	3.0	-11.5
Slight injuries	4,708	12,565	4,651	12,364	4,497
<i>Annual change (%)</i>			-1.2	-1.6	-3.3

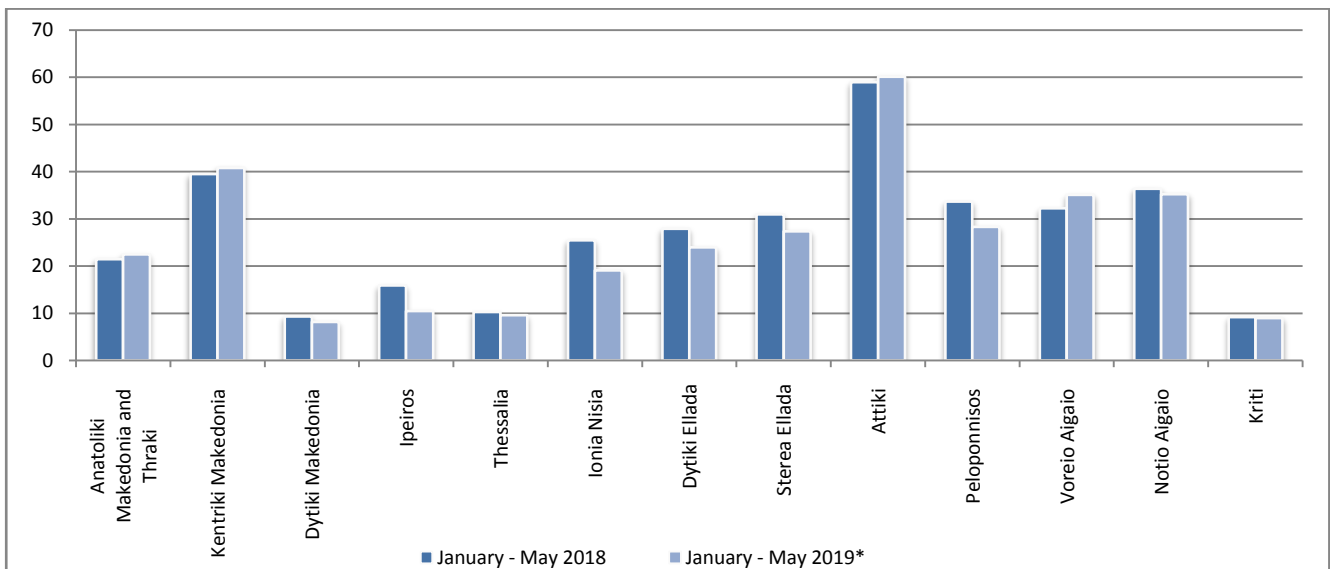
* Provisional data

Graph 5: Total road traffic accidents and fatalities, 1991-2018*



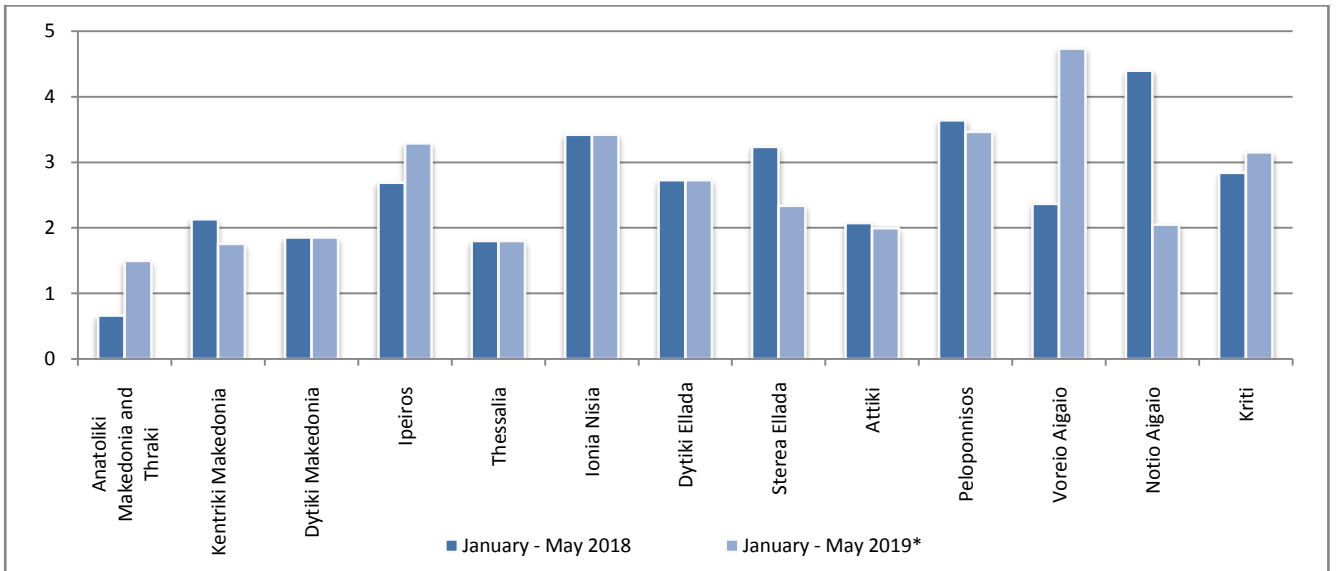
* Provisional data for the period October - December 2018

Graph 6: Road traffic accidents per 100,000 inhabitants

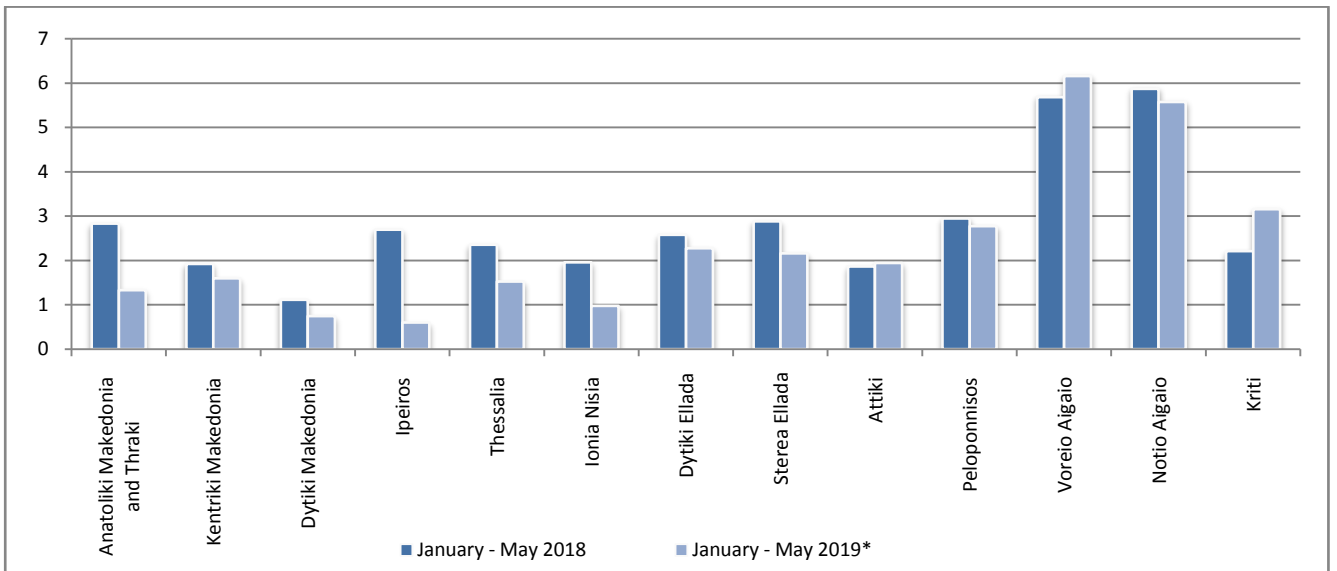


* Provisional data

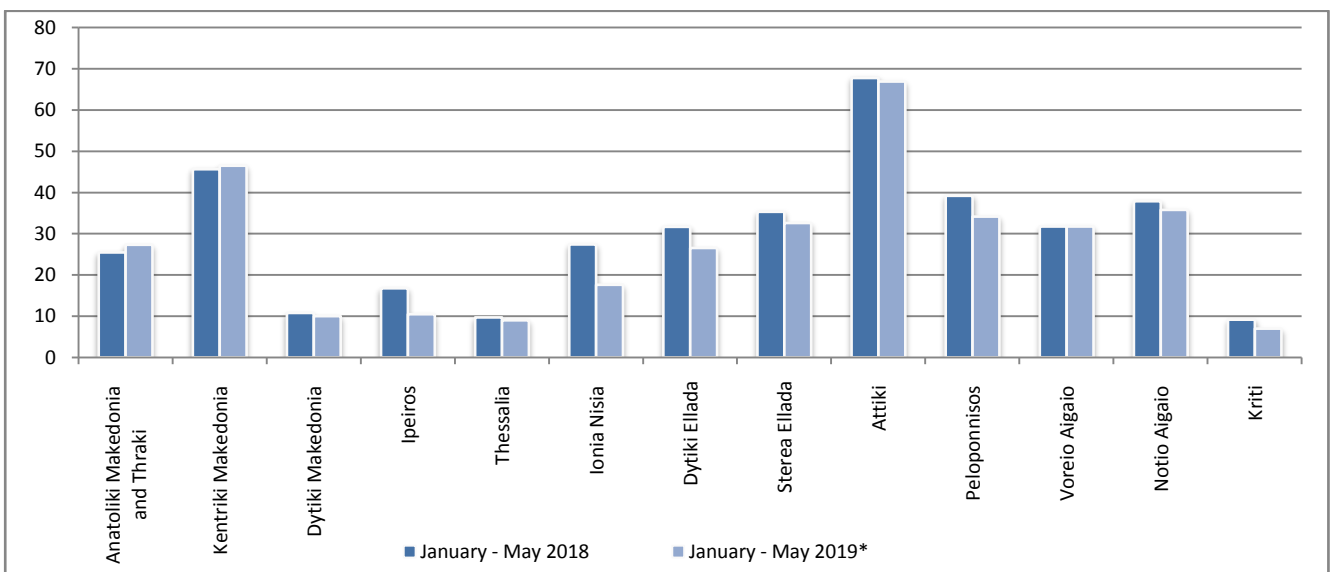
Graph 7: Fatalities per 100,000 inhabitants



Graph 8: Serious injuries per 100,000 inhabitants



Graph 9: Slight injuries per 100,000 inhabitants



* Provisional data

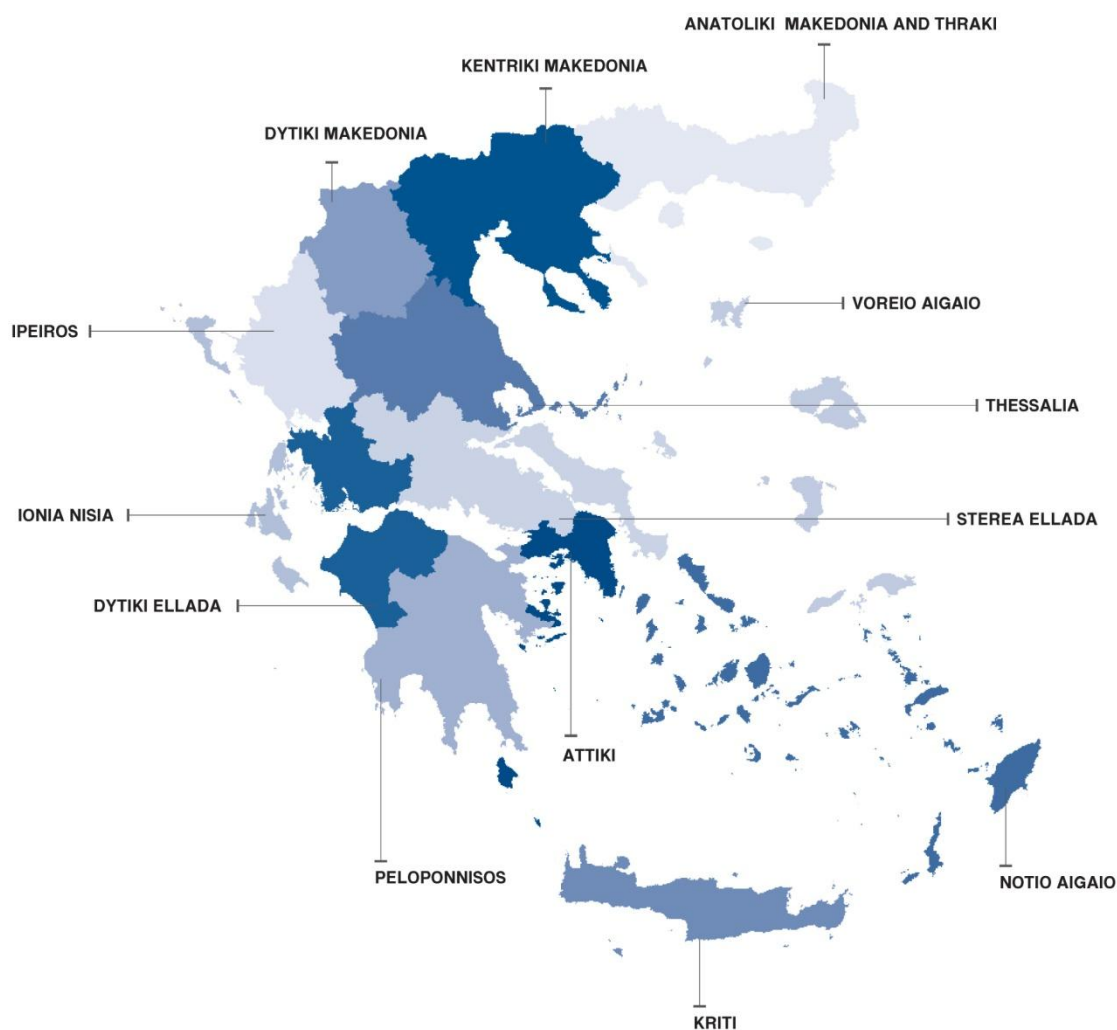
EXPLANATORY NOTES

Survey on Road Traffic Accidents

The Survey on Road Traffic Accidents is conducted on a monthly basis and it records, for each region (see map) and department of Greece and for each month separately, the number of accidents resulting in death or injury, as well as the number of persons injured by categories (drivers, passengers, pedestrians).

On a yearly basis road traffic accidents are further analyzed. The competent agencies for filling in/collecting the forms on road accidents are the local Police Authorities and the local Port Authorities of Greece.

The lower level of analysis for the place where an injury road accident occurred is the Municipal – Local Commune, which is described by a 8-digit geographic code. Data are collected on a monthly basis. The main variables are the following: place of accident, kind of road, casualties, conditions of road surface and type of road.



Legal basis

The Survey on Road Traffic Accidents is governed by Council Decision 93/704 of the European Community.

Reference period

Monthly.

Availability of data

Provisional data are available 2 months after the reference month.
Final data are available 10 months after the reference year.

National definitions **Road accident** (injury accident): Any accident involving at least one road motor vehicle in motion on a public road or square to which the public has access (excluding yards, industrial sites or vehicle depot of public transport enterprises), resulting in at least one injured or killed person. Accidents with only material damages are not included.

Fatality (Death): Any person killed immediately or dying within 30 days as a result of an injury accident (This national definition applies since 01.01.1996)

Person injured: Any person who sustained an injury as result of an injury accident, and who normally needs medical treatment.

Serious injury: Any person who sustained an injury as result of an injury accident, such as brain damages, mutilation, multiple injuries, which may result in lack of awareness or which are life-threatening.

Slight injury: Any person injured who sustained minor and not life-threatening injuries.

Vehicle: Include motor vehicles, trolleybuses, motorcycles, bicycles, motorbikes, agricultural and road making machines, animal and hand-drawn vehicles. Railway vehicles are excluded, unless the road accident involves at least one of the aforementioned types of vehicles and therefore, railway vehicles are considered vehicles.

Methodology The forms of the survey are filled in by the local Police Authorities and the local Port Authorities as well.

References More information about Road Traffic Accidents is available on ELSTAT's website and more specifically at the link: www.statistics.gr > Population, Social Conditions > Accidents > Road Traffic Accidents.
It should be noted that previous press releases and time series are available on ELSTAT's website: www.statistics.gr