



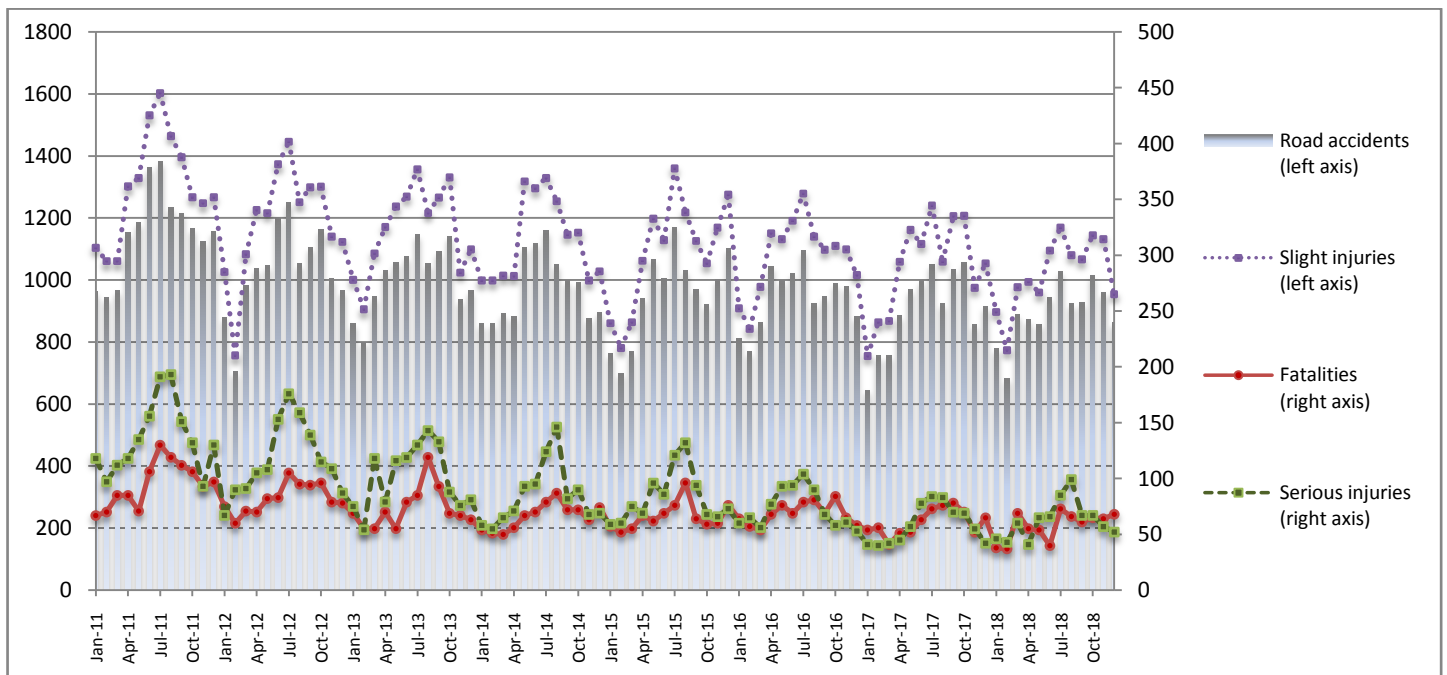
PRESS RELEASE

ROAD ACCIDENTS: December 2018

The Hellenic Statistical Authority (ELSTAT) announces provisional¹ data on Road Accidents for December 2018. In particular, the road traffic accidents which occurred in Greece, resulting in death or injury, decreased by 5.8% in comparison with the corresponding month of 2017 (862 road accidents in December 2018, against 915 road accidents in December 2017).

The casualties of the injury-causing accidents that occurred in December 2018 were as follows: 68 deaths, 52 serious injuries and 954 slight injuries. In contrast, in December 2017 the corresponding figures were: 65 deaths, 42 serious injuries and 1,054 slight injuries. Therefore, road accident casualties in December 2018 increased by 4.6% for deaths, by 23.8% for serious injuries and decreased by 9.5% for slight injuries.

**Graph 1: Road traffic accidents and casualties,
January 2011 - December 2018**



Provisional data: Apr 18 – Dec 18

Information:

Social Statistics Division

Justice and Public Order Statistics Section

D. Athanasopoulou

Tel: +30 213 1352767, Fax : +30 213 1352764

e-mail: d.athanasopoulou@statistics.gr

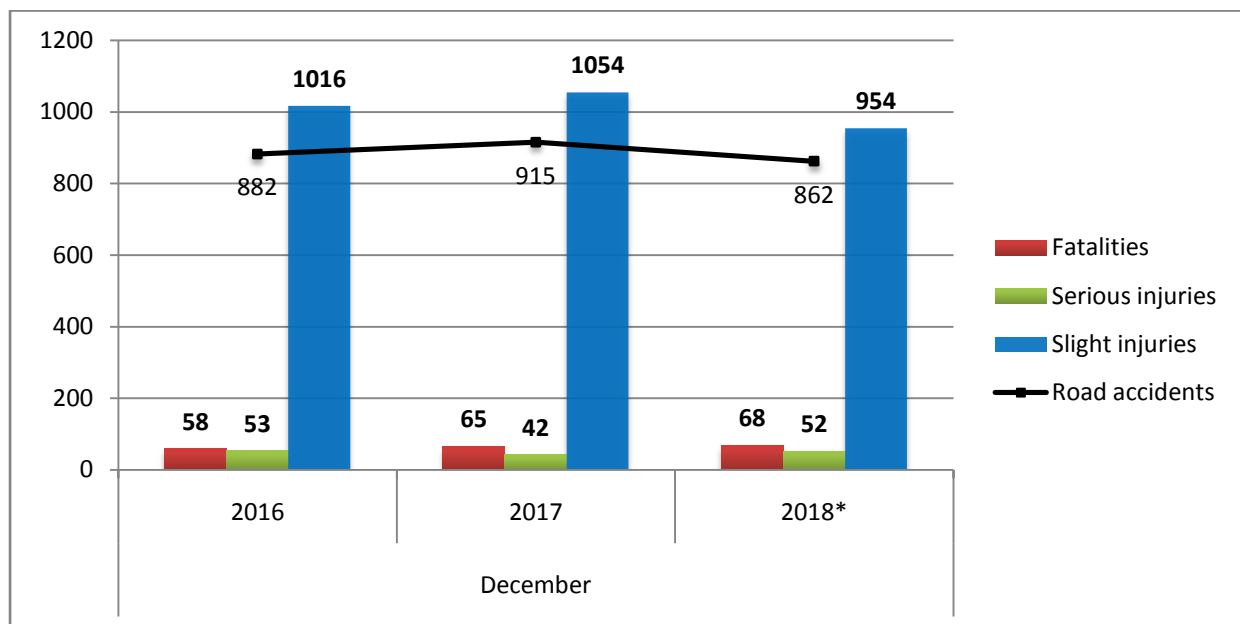
¹ Data for the reference year are provisional until the finalisation of the annual data, which become final 10 months after the end of the reference year. During these 10 months the provisional data are updated on the basis of the data of the Road Accident Forms which are transmitted to ELSTAT by Police Authorities.

Table 1: Road traffic accidents and casualties, December 2016-2018*

	December				
	2016	2017	2017/2016 (%)	2018*	2018*/2017 (%)
Road accidents	882	915	3.7%	862	-5.8%
Fatalities	58	65	12.1%	68	4.6%
Total injuries	1,069	1,096	2.5%	1,006	-8.2%
Serious injuries	53	42	-20.8%	52	23.8%
Slight injuries	1,016	1,054	3.7%	954	-9.5%

* Provisional data

Graph 2: Road traffic accidents and casualties, December 2016-2018*



* Provisional data

Table 2: Road traffic accidents and casualties, by region and department, December 2017 – 2018*

Region and Department	Road accidents			Fatalities			Serious injuries			Slight injuries		
	2017	2018*	%	2017	2018*	%	2017	2018*	%	2017	2018*	%
Greece Total	915	862	-5.8%	65	68	4.6%	42	52	23.8%	1,054	954	-9.5%
Anatoliki Makedonia, Thraki (East Macedonia and Thrace)	25	32	28.0%	1	4	300.0%	1	4	300.0%	32	33	3.1%
Drama	5	5	0.0%	0	1		0	0		6	7	
Evros	5	8	60.0%	0	2		0	1		6	6	
Kavala	6	10	66.7%	0	0		1	0		7	15	
Xanthi	2	4	100.0%	0	1		0	1		4	2	
Rodopi	7	5	-28.6%	1	0		0	2		9	3	
Kentriki Makedonia (Central Macedonia)	179	121	-32.4%	14	9	-35.7%	8	5	-37.5%	203	131	-35.5%
Imathia	5	6	20.0%	2	2		1	2		7	3	
Thessaloniki	154	92	-40.3%	11	3		1	0		173	106	
Kilkis	8	3	-62.5%	0	0		5	0		9	3	
Pella	3	8	166.7%	1	0		0	2		2	8	
Pieria	1	2	100.0%	0	1		1	1		0	1	
Serres	4	6	50.0%	0	3		0	0		8	3	
Chalkidiki	4	4	0.0%	0	0		0	0		4	7	
Dytiki Makedonia (West Macedonia)	8	4	-50.0%	1	2	100.0%	0	0	-	9	4	-55.6%
Grevena	0	0	-	0	0		0	0		0	0	
Kastoria	1	0	-100.0%	0	0		0	0		1	0	
Kozani	7	0	-100.0%	1	0		0	0		8	0	
Florina	0	4	-	0	2		0	0		0	4	
Ipeiros (Epirus)	10	9	-10.0%	2	3	50.0%	0	2	-	12	4	-66.7%
Arta	1	1	0.0%	1	1		0	0		1	0	
Thesprotia	5	4	-20.0%	1	2		0	0		4	2	
Ioannina	3	3	0.0%	0	0		0	1		5	2	
Preveza	1	1	0.0%	0	0		0	1		2	0	
Thessalia (Thessaly)	22	13	-40.9%	5	3	-40.0%	4	2	-50.0%	21	13	-38.1%
Karditsa	9	2	-77.8%	1	0		1	0		11	2	
Larissa	7	8	14.3%	1	3		2	2		5	8	
Magnissia	4	2	-50.0%	2	0		1	0		1	2	
Trikala	2	1	-50.0%	1	0		0	0		4	1	
Ionian Nisia (Ionian Islands)	5	5	0.0%	1	0	-100.0%	1	0	-100.0%	4	6	50.0%
Zakynthos	1	1	0.0%	0	0		1	0		1	1	
Kerkyra	0	1	-	0	0		0	0		0	1	
Kefallinia	1	2	100.0%	0	0		0	0		1	2	
Lefkada	3	1	-66.7%	1	0		0	0		2	2	

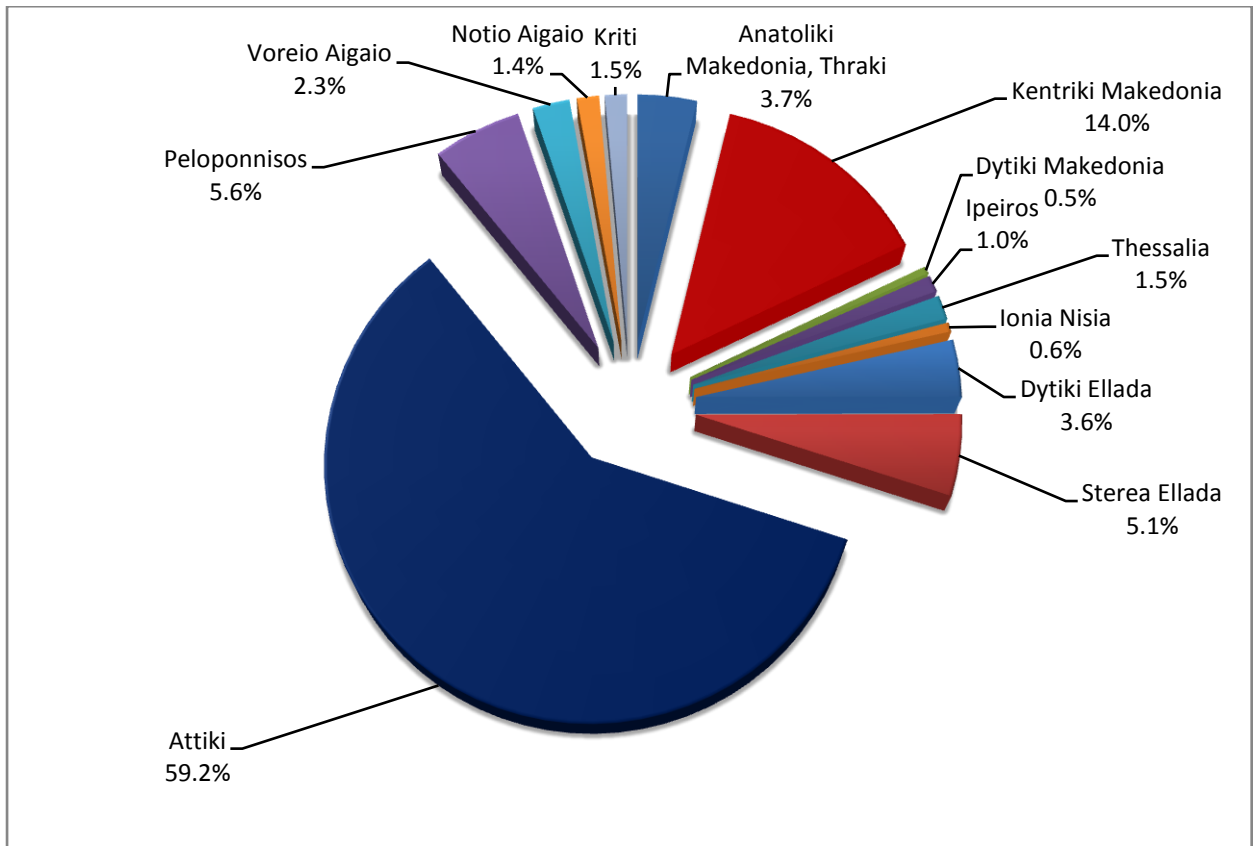
* Provisional data

Table 2: Road traffic accidents and casualties, by region and department, December 2017 – 2018* (Continued)

Region and Department	Road accidents			Fatalities			Serious injuries			Slight injuries		
	2017	2018*	%	2017	2018*	%	2017	2018*	%	2017	2018*	%
Dytiki Ellada (West Greece)	33	31	-6.1%	4	3	-25.0%	4	7	75.0%	34	30	-11.8%
Etolia & Akarnania	14	13	-7.1%	3	2		3	2		11	11	
Achaia	13	12	-7.7%	1	1		1	3		14	14	
Ilia	6	6	0.0%	0	0		0	2		9	5	
Stereia Ellada	52	44	-15.4%	5	6	20.0%	5	5	0.0%	67	58	-13.4%
Viotia	10	7	-30.0%	0	0		1	2		14	11	
Evia	21	18	-14.3%	1	3		2	2		30	17	
Evrytania	2	0	-100.0%	0	0		1	0		1	0	
Fthiotida	16	13	-18.8%	2	3		1	1		19	21	
Fokida	3	6	100.0%	2	0		0	0		3	9	
Attiki (Attica)	500	510	2.0%	15	17	13.3%	12	18	50.0%	572	573	0.2%
Peloponnisos (Peloponnese)	44	48	9.1%	9	12	33.3%	3	6	100.0%	56	60	7.1%
Argolida	4	9	125.0%	0	3		0	2		8	13	
Arkadia	8	12	50.0%	2	2		1	0		9	18	
Korinthia	13	14	7.7%	2	3		0	2		12	15	
Lakonia	6	3	-50.0%	1	1		0	0		7	3	
Messinia	13	10	-23.1%	4	3		2	2		20	11	
Voreio Aigaio (North Aegean)	13	20	53.8%	0	3	-	1	0	-100.0%	15	20	33.3%
Lesvos	1	15	1400.0%	0	3		0	0		2	15	
Samos	7	3	-57.1%	0	0		0	0		7	3	
Chios	5	2	-60.0%	0	0		1	0		6	2	
Notio Aigaio (South Aegean)	16	12	-25.0%	5	2	-60.0%	3	0	-100.0%	18	11	-38.9%
Dodekanissos	7	7	0.0%	2	2		1	0		7	6	
Kyklades	9	5	-44.4%	3	0		2	0		11	5	
Kriti (Crete)	8	13	62.5%	3	4	33.3%	0	3	-	11	11	0.0%
Iraklio	5	6	20.0%	0	0		0	3		10	6	
Lassithi	1	1	0.0%	1	1		0	0		0	0	
Rethymno	1	3	200.0%	1	2		0	0		1	2	
Chania	1	3	200.0%	1	1		0	0		0	3	

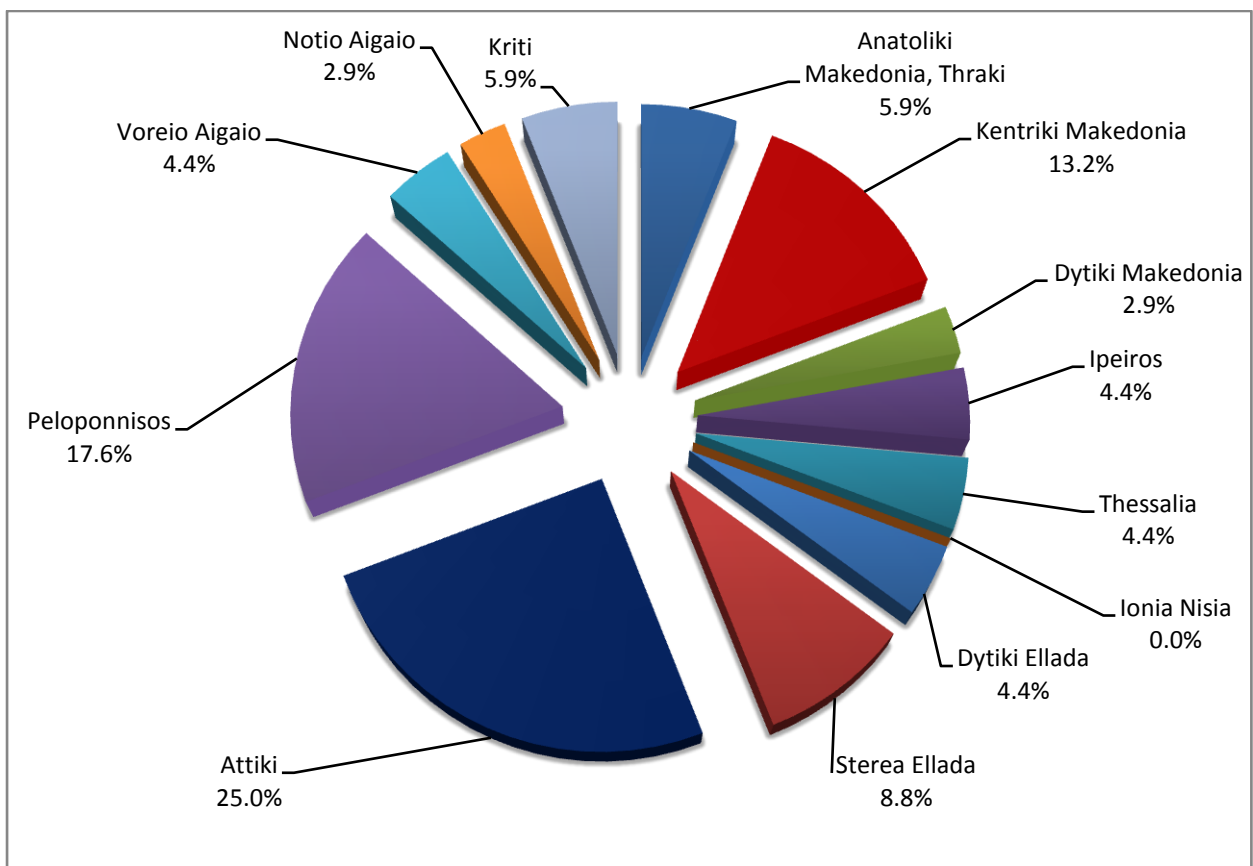
* Provisional data

Graph 3: Road traffic accidents by region, December 2018 *



* Provisional data

Graph 4: Fatalities by region, December 2018 *



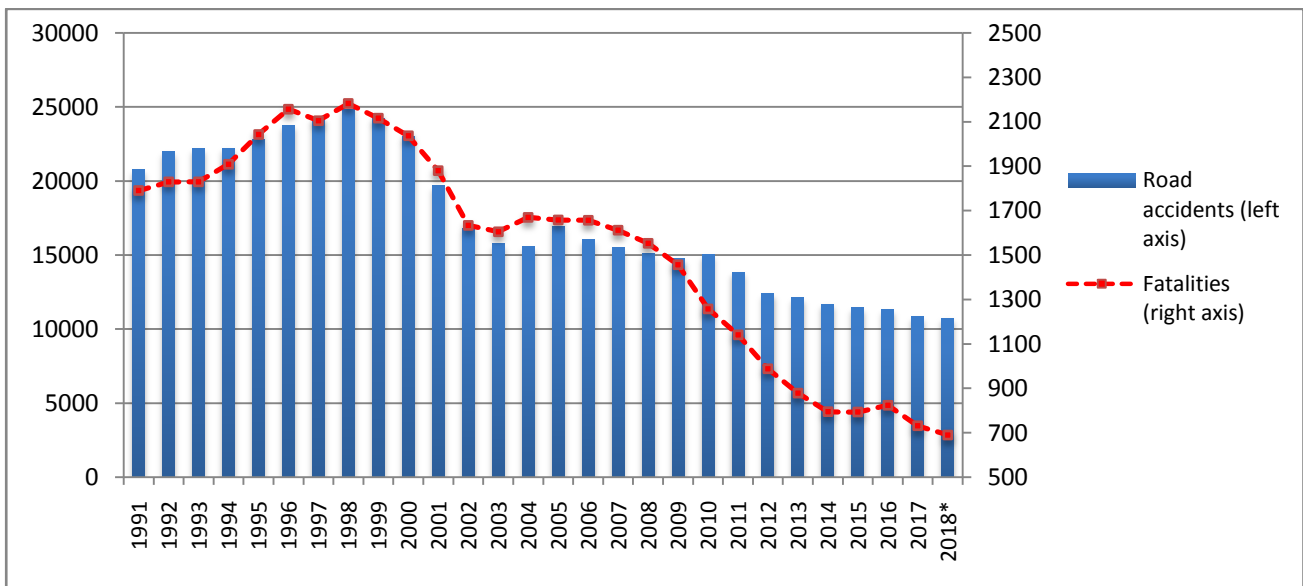
* Provisional data

Table 3: Road traffic accidents and casualties for the period January - December 2016, 2017 and 2018*

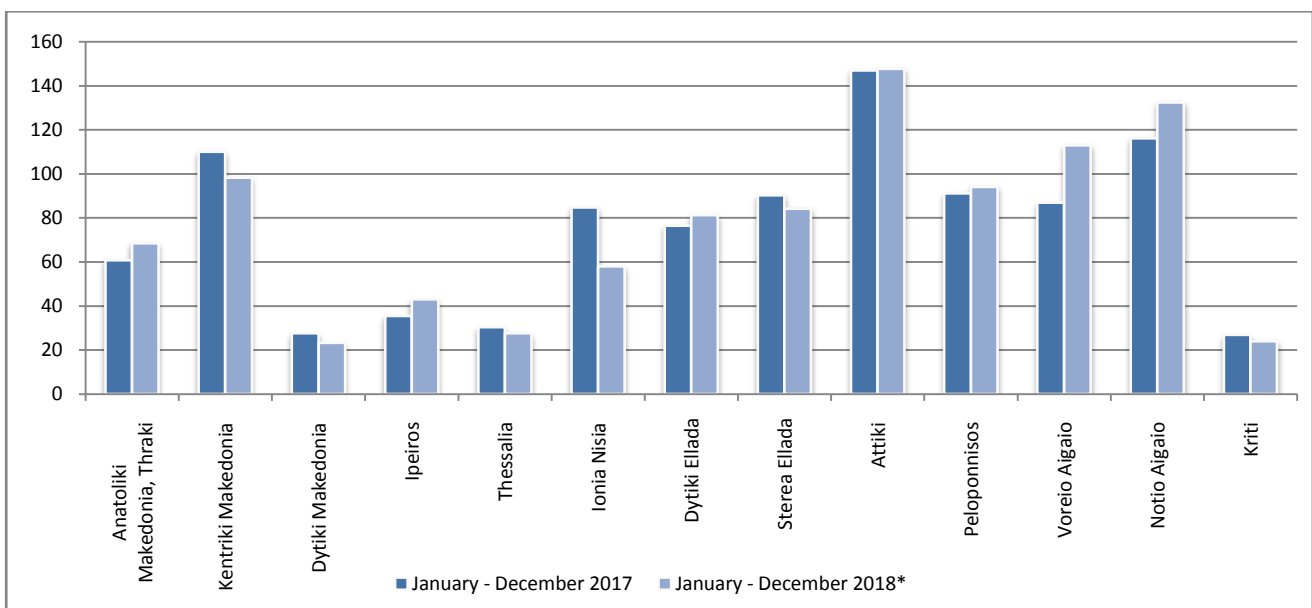
	2016	2017	2018*
	January - December	January - December	January - December
Road Accidents	11,318	10,848	10,740
Annual Change (%) :		-4.2%	-1.0%
Fatalities	824	731	690
Annual Change (%) :		-11.3%	-5.6%
Serious injuries	879	706	748
Annual Change (%) :		-19.7%	5.9%
Slight injuries	12,946	12,565	12,243
Annual Change (%) :		-2.9%	-2.6%

* Provisional data

Graph 5: Total road traffic accidents and fatalities, 1991-2018*

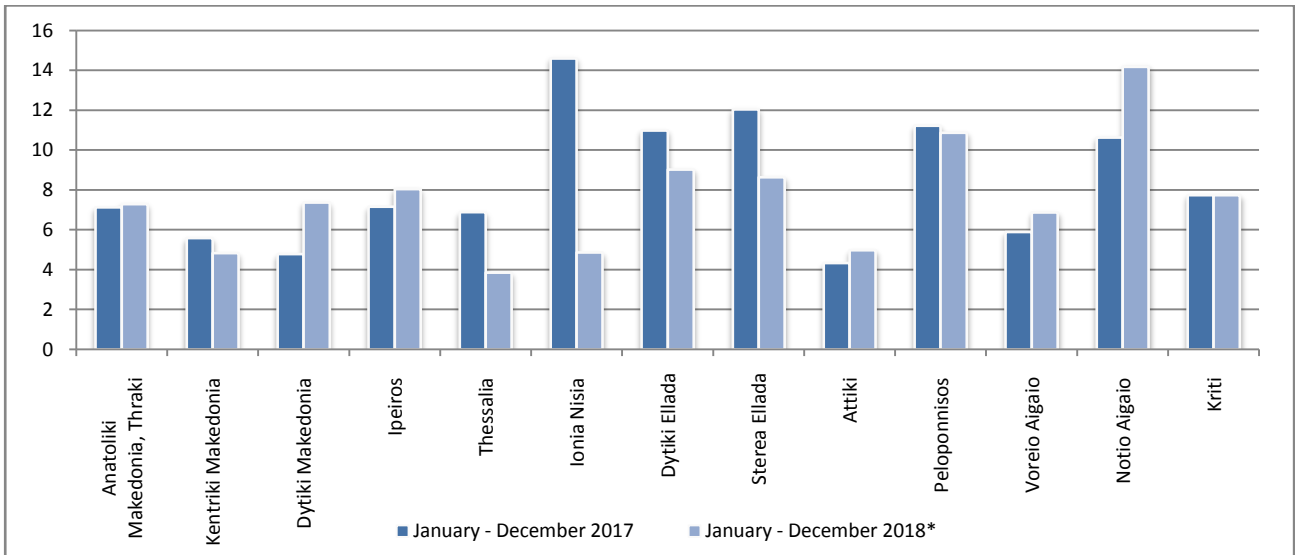


Graph 6: Road accidents per 100,000 inhabitants

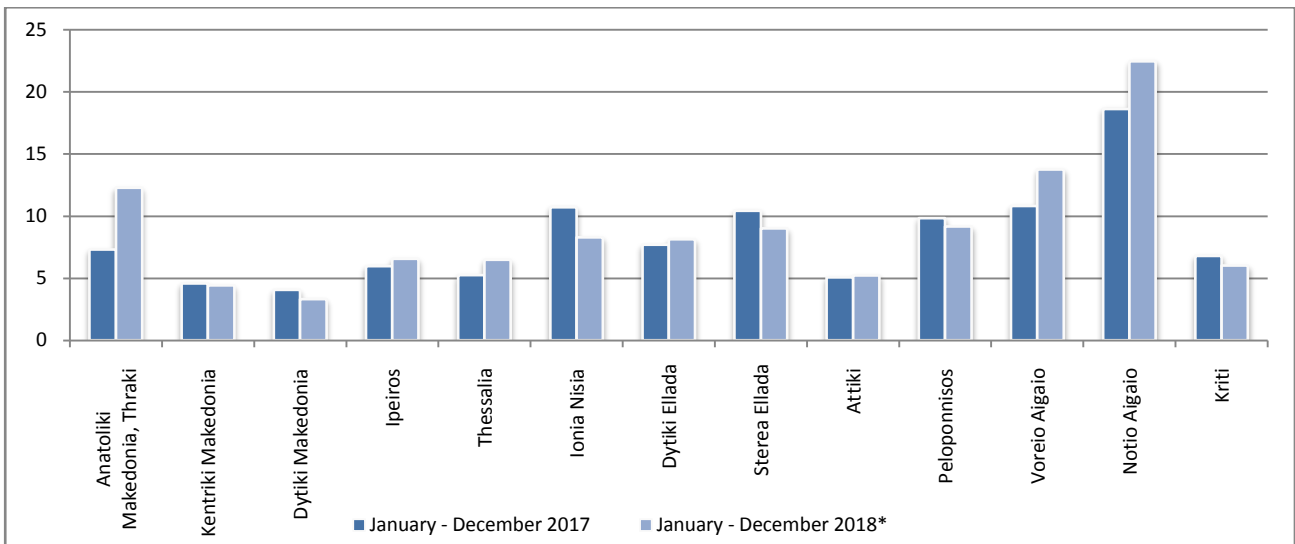


* Provisional data

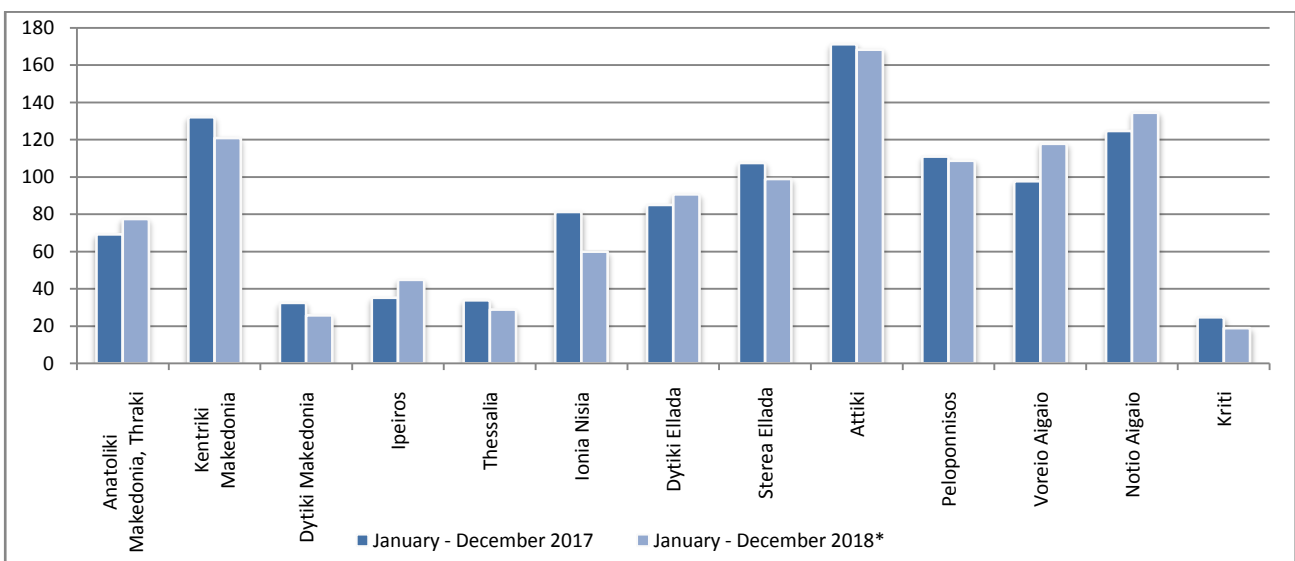
Graph 7: Fatalities per 100,000 inhabitants



Graph 8: Serious injuries per 100,000 inhabitants



Graph 9: Slight injuries per 100,000 inhabitants



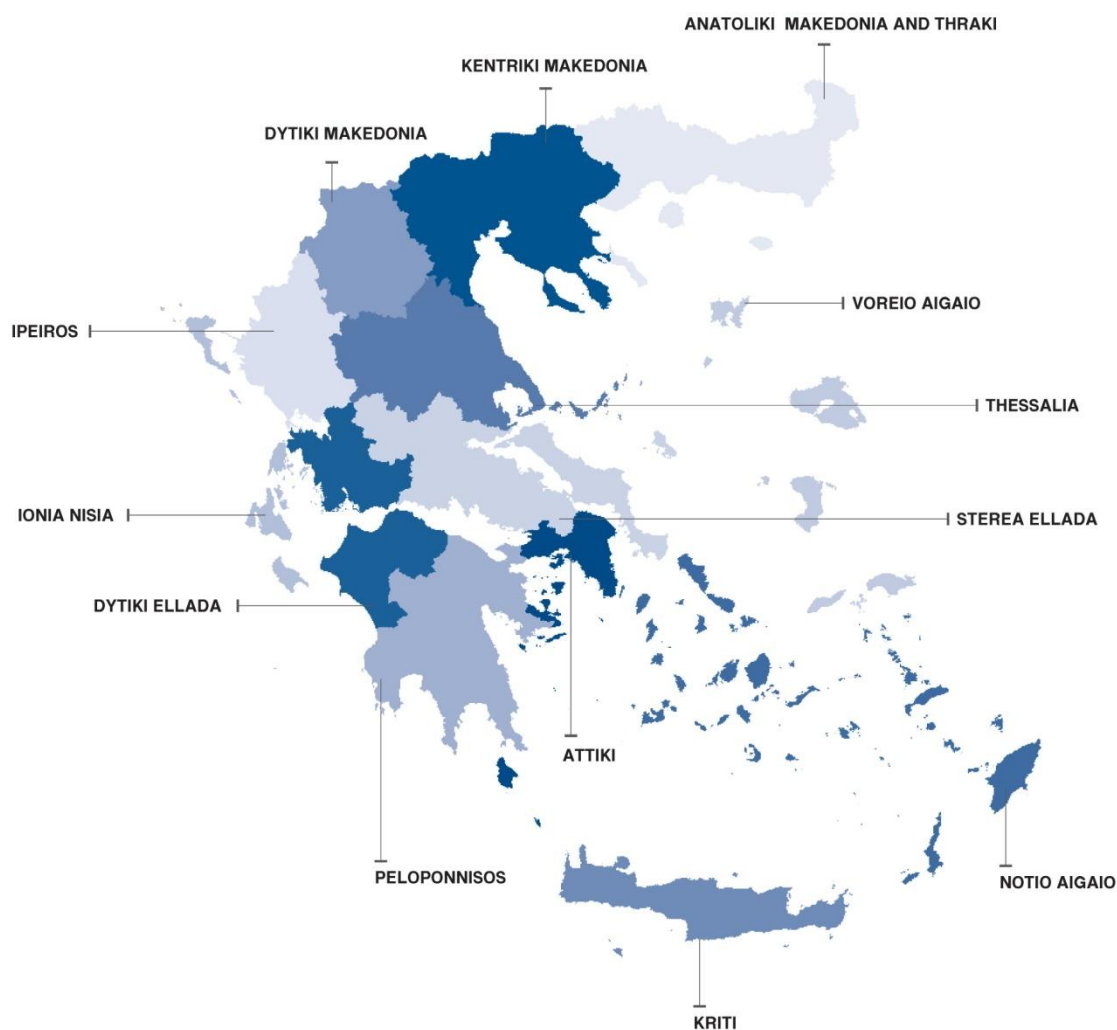
* Provisional data

Explanatory Notes

Survey on Road Accidents The survey on road accidents is conducted on a monthly basis and it records, for each department of Greece and for each month separately, the number of accidents resulting in death or injury, as well as the number of persons injured by categories (drivers, passengers, pedestrians).

On a yearly basis, road accidents are further analyzed. The competent agencies for filling in/collecting the forms on road accidents are the local Police Authorities and the local Port Authorities of Greece.

The lower level of analysis for the place where an injury road accident occurred is the Municipal – Local Commune, which is described by a 8-digit geographic code. Data are collected on a monthly basis. The main variables are the following: place of accident, kind of road, casualties, conditions of road surface and type of road.



Legal basis The Survey on Road Traffic Accidents is governed by Council Decision 93/704 of the European Community.

Reference Period Monthly.

Availability of Data Provisional data are available 2 months after the reference month.
Final data are available 10 months after the reference year.

National Definitions **Road accident** (injury accident): Any accident involving at least one road motor vehicle in motion on a public road or square to which the public has access (excluding yards, industrial sites or vehicle depot of public transport enterprises), resulting in at least one injured or killed person. Accidents with only material damages are not included.

Fatality (Death): Any person killed immediately or dying within 30 days as a result of an injury accident (This national definition applies since 01.01.1996)

Person injured: Any person who sustained an injury as result of an injury accident, and who normally needs medical treatment.

Serious injury: Any person who sustained an injury as result of an injury accident, such as brain damages, mutilation, multiple injuries, which may result in lack of awareness or which are life-threatening.

Slight injury: Any person injured who sustained minor and not life-threatening injuries.

Vehicle: Include motor vehicles, trolleybuses, motorcycles, bicycles, motorbikes, agricultural and road making machines, animal and hand-drawn vehicles. Railway vehicles are excluded, unless the road accident involves at least one of the aforementioned types of vehicles and therefore, railway vehicles are considered vehicles.

Methodology The forms of the survey are filled in by the local Police Authorities and the local Port Authorities as well.

References More information about road accidents is available on ELSTAT's website and more specifically at the link: www.statistics.gr > Population & Social Conditions > Accidents > Road Traffic Accidents. It should be noted that previous press releases and time series are available on ELSTAT's website: www.statistics.gr