

PRESS RELEASE

ARRIVALS AND NIGHTS SPENT IN HOTELS, SIMILAR ESTABLISHMENTS AND TOURIST CAMPSITES: 2017 (final data)

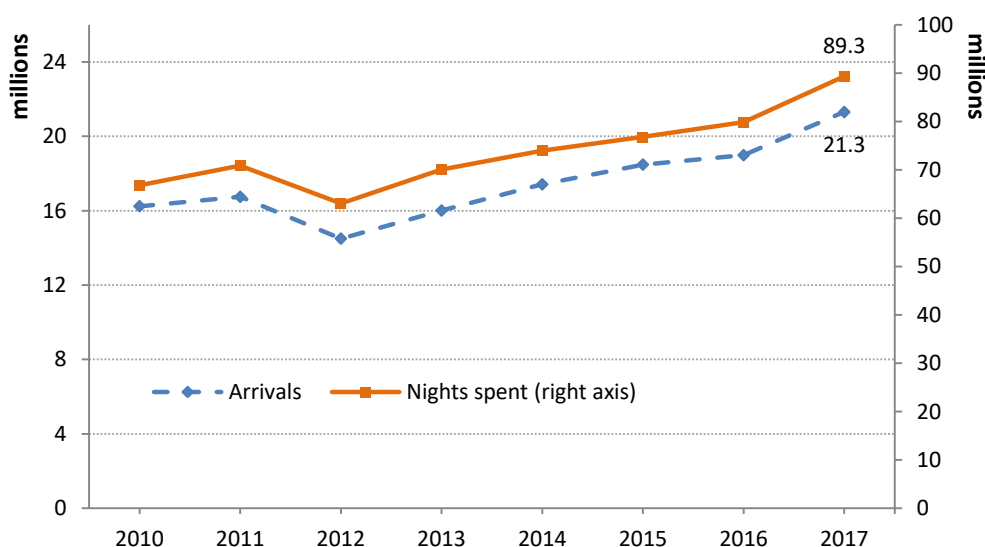
According to the results of the survey on arrivals and nights spent in hotels, similar establishments and tourist campsites, conducted by the Hellenic Statistical Authority (ELSTAT), for the total of these establishments, in 2017 compared with 2016, an increase of 10.2% is recorded in arrivals (Tables 1 and 4) and 9.6% in nights spent (Tables 2 and 5).

More specifically, in 2017 compared with 2016, an increase of 1.6% is recorded in arrivals and 1.2% in nights spent by residents and 14.1% in arrivals and 11.4% in nights spent by non-residents (Tables 1, 2, 7 and 8).

The annual occupancy of the bed places in hotels and similar establishments (excluding tourist campsites), which is calculated by taking into account the nights spent compared to the bed places that were in operation, amounted to 52.8% in 2017, compared with 50.1% in 2016 (Tables 3 and 6).

Specifically, according to the monthly data, 85.4% of the arrivals and 92.3% of the nights spent, in hotels, similar establishments and tourist campsites of Greece, are recorded during the period from April to October (Tables 1 and 2, Graph 2).

Graph 1. Arrivals and nights spent in hotels, similar establishments and tourist campsites, 2010 – 2017



Information:

Trade and Services Statistics Division
 Tourism Statistics Section
 A. Katri, M. Apartoglou
 Tel.: +30 213 135 2168, 213 135 2942
 Fax: 213 135 2947
 e-mail: tourism.sector@statistics.gr

As regards the breakdown of the survey data by Region (NUTS 2), an increase is observed in arrivals and nights spent, in all the Regions of Greece. A significant increase of arrivals, in absolute values, in hotels, similar establishments and tourist campsites is observed in Notio Aigaio (11.7% in arrivals and 13.0% in nights spent), Attiki (10.4% in arrivals and 10.4% in nights spent), Kriti (7.7% in arrivals and 7.3% in nights spent) and Ionia Nisia (15.2% in arrivals and 8.2% in nights spent) (Tables 4 and 5).

In 2017, the largest share of arrivals and nights spent in hotels, similar establishments and tourist campsites, is recorded by non-residents, i.e 70.7% of arrivals and 83.2% of nights spent (Graph 3).

In 2017, the largest share of arrivals and nights spent by non-residents in hotels, similar establishments and tourist campsites is recorded by customers (guests) whose country of residence is in Europe (82.1% of arrivals and 91.1% of nights spent) with significant contribution from the EU Members States (68.1% of arrivals and 75.6% of nights spent). The largest contribution concerning arrivals is recorded for Germany (13.6% of arrivals and 18.0% of nights spent), United Kingdom (13.2% of arrivals and 16.1% of nights spent), France (7.7% of arrivals and 6.7% of nights spent) and Italy (4.9% of arrivals and 4.1% of nights spent). For the rest of the European countries, the largest contribution is recorded for Russia (5.6% of arrivals and 7.7% of nights spent) (Tables 7 and 8).

When comparing the data of arrivals and nights spent in hotels, similar establishments and tourist campsites, by country of residence of the year 2017 with the corresponding data of the year 2016, a significant increase of arrivals, in absolute values, is recorded, from EU countries. More precisely from Germany 19.2% in arrivals and 16.4% in nights spent, United Kingdom 8.0% in arrivals and 5.2% in nights spent and the Netherlands 30.7% in arrivals and 24.5% in nights spent. As regards the other European countries, a significant increase of arrivals, in absolute values, is recorded from Russia 13.3% in arrivals and 11.2% in nights spent. For the rest of the continents, a significant increase of arrivals and nights spent, in absolute values, is recorded from America with a large contribution from USA (22.4% in arrivals and 21.2% in nights spent) and from Asia with a large contribution from People's Republic of China (32.4% in arrivals and 28.7% in nights spent) (Tables 7 and 8).

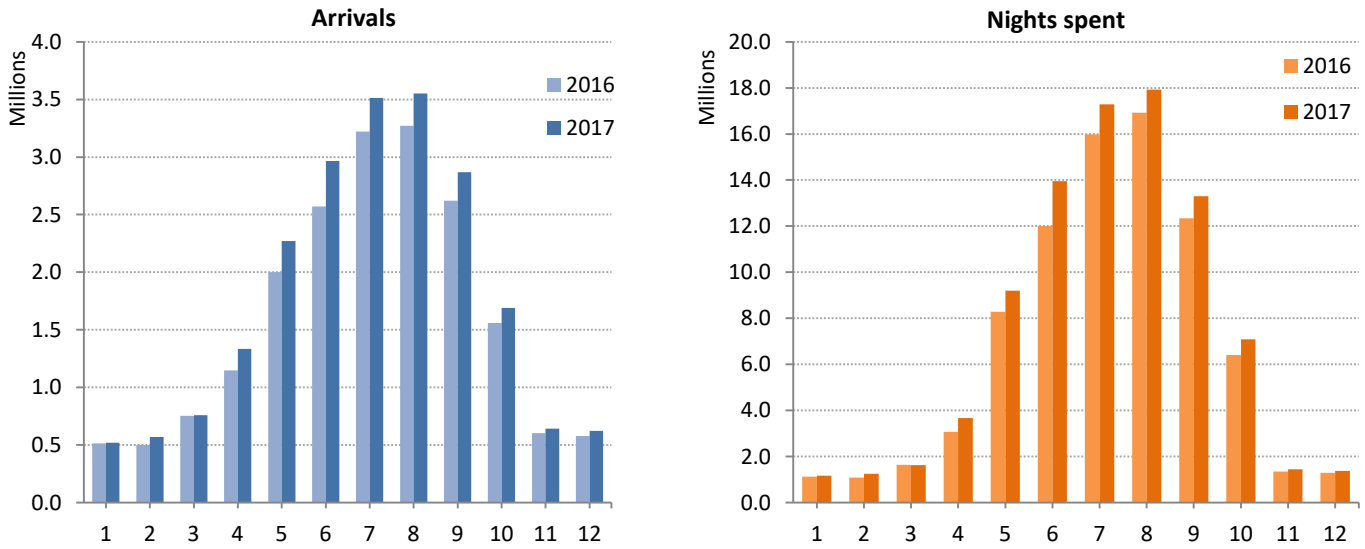
Table 1. Arrivals of residents and non-residents at hotels, similar establishments and tourist campsites, by month, 2016 and 2017

	2016					2017					Change % of total 2017/2016
	Total	Hotels and similar establishments		Tourist campsites		Total	Hotels and similar establishments		Tourist campsites		
		Residents	Non-residents	Residents	Non-residents		Residents	Non-residents	Residents	Non-residents	
Total	19,337,472	5,996,434	12,999,947	141,364	199,727	21,304,135	6,105,805	14,830,511	133,184	234,635	10.2
January	513,196	364,203	148,752	98	143	521,020	356,144	164,639	62	175	1.5
February	499,200	336,034	162,927	121	118	569,785	388,671	180,815	69	230	14.1
March	753,613	464,676	288,421	185	331	759,642	472,511	286,704	80	347	0.8
April	1,148,953	535,009	610,614	601	2,729	1,332,810	544,947	782,536	697	4,630	16.0
May	1,999,717	466,895	1,514,124	3,763	14,935	2,270,291	479,815	1,765,509	4,995	19,972	13.5
June	2,570,086	569,128	1,956,473	18,712	25,773	2,964,459	570,571	2,349,940	12,603	31,345	15.3
July	3,219,993	711,432	2,402,993	47,582	57,986	3,513,094	716,439	2,689,901	45,013	61,741	9.1
August	3,272,345	773,151	2,368,969	63,595	66,630	3,552,898	775,507	2,640,188	61,520	75,683	8.6
September	2,620,326	539,641	2,047,917	5,954	26,814	2,866,998	562,467	2,262,546	7,170	34,815	9.4
October	1,559,154	455,833	1,099,235	490	3,596	1,690,087	438,597	1,245,954	663	4,873	8.4
November	602,686	372,392	229,712	132	450	641,535	368,715	272,131	179	510	6.4
December	578,203	408,040	169,810	131	222	621,516	431,421	189,648	133	314	7.5

Table 2. Nights spent of residents and non-residents in hotels, similar establishments and tourist campsites, by month, 2016 and 2017

	2016					2017					Change % of total 2017/2016
	Total	Hotels and similar establishments		Tourist campsites		Total	Hotels and similar establishments		Tourist campsites		
		Residents	Non-residents	Residents	Non-residents		Residents	Non-residents	Residents	Non-residents	
Total	81,502,649	13,943,606	65,941,418	831,596	786,029	89,303,371	14,154,141	73,474,232	804,398	870,600	9.6
January	1,128,462	741,195	386,020	205	1,042	1,173,185	726,650	445,552	158	825	4.0
February	1,087,741	666,883	419,945	265	648	1,246,617	783,685	462,163	131	638	14.6
March	1,644,852	912,129	731,313	498	912	1,632,453	920,547	710,609	215	1,082	-0.8
April	3,073,955	1,094,376	1,969,720	2,645	7,214	3,669,706	1,179,694	2,477,069	2,533	10,410	19.4
May	8,275,650	1,007,394	7,166,617	48,002	53,637	9,206,001	972,355	8,134,270	41,533	57,843	11.2
June	12,000,708	1,257,847	10,520,651	120,614	101,596	13,950,820	1,290,707	12,445,646	100,512	113,955	16.2
July	15,980,756	1,950,739	13,537,738	262,542	229,737	17,289,128	1,962,065	14,848,511	240,414	238,138	8.2
August	16,917,825	2,567,372	13,740,446	340,803	269,204	17,927,251	2,501,268	14,783,857	345,510	296,616	6.0
September	12,340,869	1,233,344	10,946,699	53,331	107,495	13,295,112	1,286,602	11,808,082	68,020	132,408	7.7
October	6,411,885	932,735	5,465,387	1,909	11,854	7,087,806	896,137	6,171,913	4,559	15,197	10.5
November	1,343,164	727,943	612,995	445	1,781	1,445,219	722,586	719,980	484	2,169	7.6
December	1,296,782	851,649	443,887	337	909	1,380,073	911,845	466,580	329	1,319	6.4

Graph 2. Arrivals and nights spent in hotels, similar establishments and tourist campsites, by month, 2016 and 2017



Graph 3. Arrivals and nights spent by residents and non-residents in hotels, similar establishments and tourist campsites, 2017

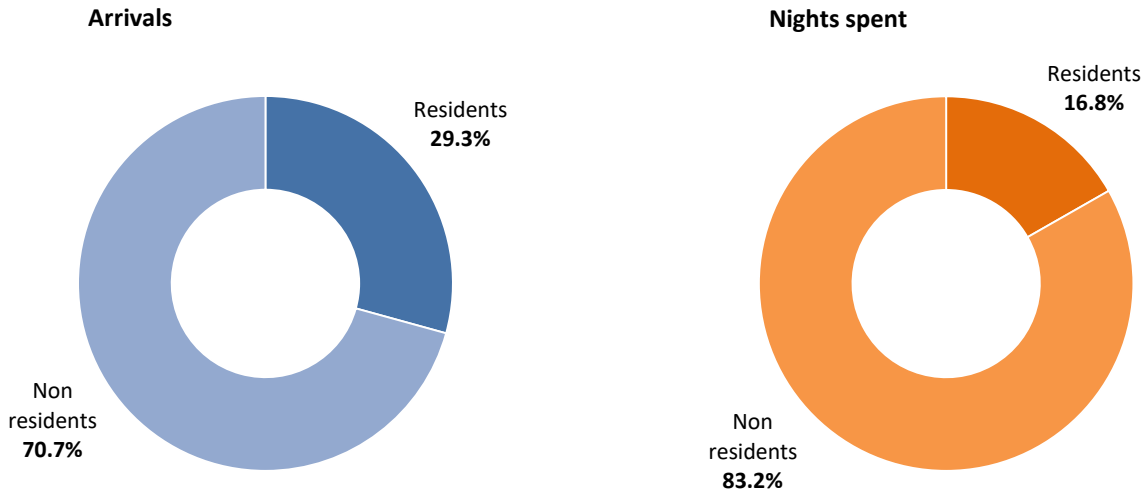


Table 3. Occupancy of bed-places that were in operation in hotels and similar establishments, by month, 2016 and 2017

	Occupancy of bed-places %	
	2016	2017
Annual occupancy	50.1	52.8
January	19.0	19.1
February	19.2	22.1
March	22.8	21.8
April	22.5	25.5
May	43.7	47.1
June	60.1	66.8
July	72.0	75.2
August	74.8	76.8
September	63.9	66.3
October	38.6	40.7
November	19.8	19.9
December	22.4	22.9

Graph 4. Occupancy of bed-places that were in operation in hotels and similar establishments, by month, 2016 and 2017

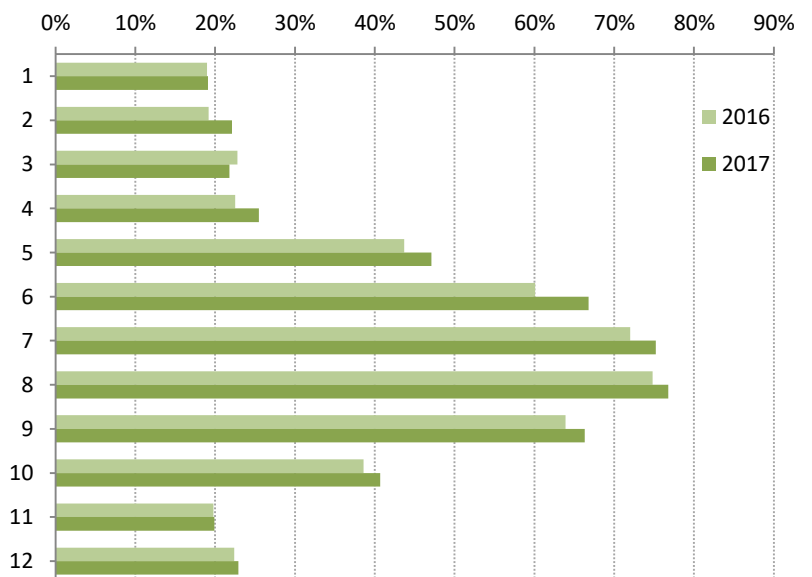


Table 4. Arrivals at hotels, similar establishments and tourist campsites, by Nuts 2 Region, 2016 and 2017

	2016				2017				Change % of total 2017/2016
	Total	Hotels and similar establishments	Tourist campsites	Percentage % of total	Total	Hotels and similar establishments	Tourist campsites	Percentage % of total	
Total	19,337,472	18,996,381	341,091	100.0	21,304,135	20,936,316	367,819	100.0	10.2
Anatoliki Makedonia, Thraki	627,114	605,998	21,116	3.2	675,158	649,015	26,143	3.2	7.7
Kentriki Makedonia	2,530,212	2,430,086	100,126	13.1	2,654,945	2,547,544	107,401	12.5	4.9
Dytiki Makedonia*	118,766	118,766	0	0.6	131,741	131,741	0	0.6	10.9
Thessalia	831,893	813,763	18,130	4.3	946,949	923,834	23,115	4.4	13.8
Ipeiros	419,061	406,791	12,270	2.2	473,055	457,581	15,474	2.2	12.9
Ionia Nisia	1,508,475	1,490,856	17,619	7.8	1,737,859	1,717,806	20,053	8.2	15.2
Dytiki Ellada	604,924	588,632	16,292	3.1	652,682	633,483	19,199	3.1	7.9
Sterea Ellada	559,429	541,231	18,198	2.9	614,992	598,656	16,336	2.9	9.9
Peloponnisos	1,051,148	983,795	67,353	5.4	1,207,387	1,133,876	73,511	5.7	14.9
Attiki	3,732,336	3,721,862	10,474	19.3	4,121,114	4,107,066	14,048	19.3	10.4
Voreio Aigaio*	286,460	286,460	0	1.5	343,099	343,099	0	1.6	19.8
Notio Aigaio	3,348,242	3,301,280	46,962	17.3	3,738,955	3,698,691	40,264	17.6	11.7
Kriti	3,719,412	3,706,861	12,551	19.2	4,006,199	3,993,924	12,275	18.8	7.7

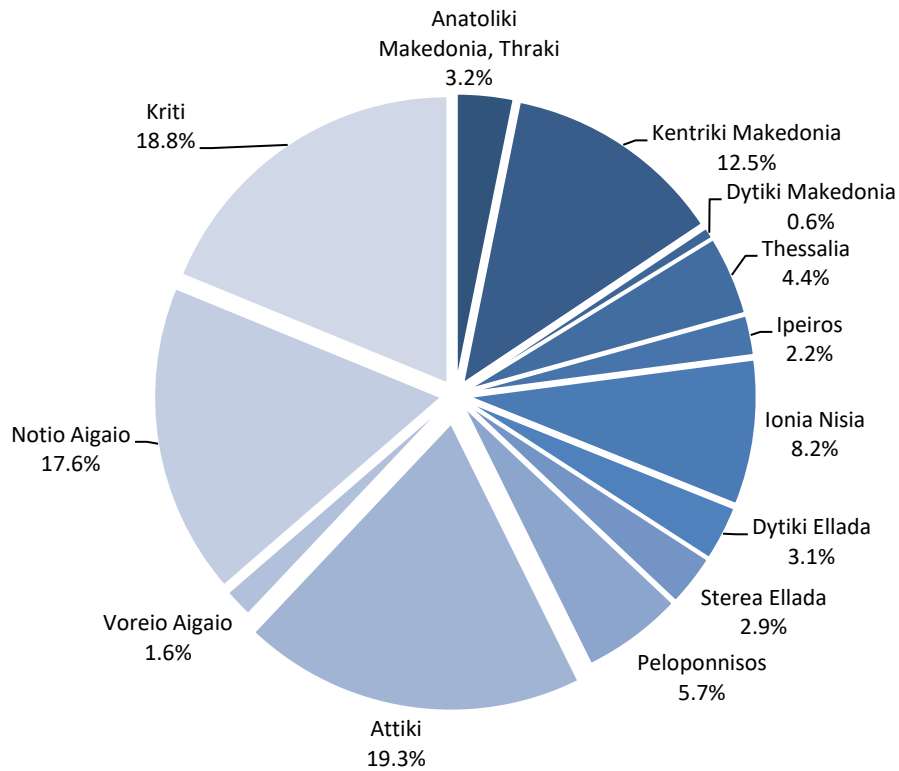
* The arrivals and nights spent refer to hotels, similar establishments and tourist campsites, which are registered to the Hellenic Chamber of Hotels. For these specific regions tourist campsites are not registered to the Hellenic Chamber of Hotels.

Table 5. Nights spent in hotels, similar establishments and tourist campsites, by Nuts 2 Region, 2016 and 2017

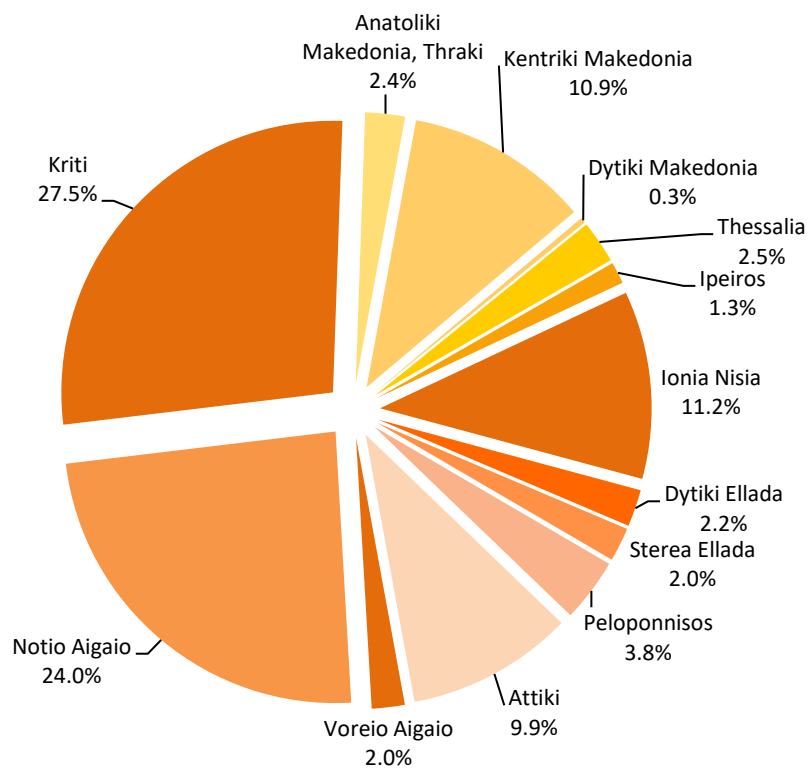
	2016				2017				Change % of total 2017/2016
	Total	Hotels and similar establishments	Tourist campsites	Percentage % of total	Total	Hotels and similar establishments	Tourist campsites	Percentage % of total	
Total	81,502,649	79,885,024	1,617,625	100.0	89,303,371	87,628,373	1,674,998	100.0	9.6
Anatoliki Makedonia, Thraki	1,878,918	1,770,206	108,712	2.3	2,110,497	1,973,242	137,255	2.4	12.3
Kentriki Makedonia	9,051,345	8,367,559	683,786	11.1	9,754,139	9,086,001	668,138	10.9	7.8
Dytiki Makedonia*	269,903	269,903	0	0.3	294,448	294,448	0	0.3	9.1
Thessalia	2,118,440	2,062,744	55,696	2.6	2,273,798	2,209,719	64,079	2.5	7.3
Ipeiros	1,002,859	956,624	46,235	1.2	1,153,945	1,099,202	54,743	1.3	15.1
Ionia Nisia	9,221,858	9,134,553	87,305	11.3	9,982,465	9,885,033	97,432	11.2	8.2
Dytiki Ellada	1,875,560	1,807,778	67,782	2.3	1,964,907	1,902,912	61,995	2.2	4.8
Sterea Ellada	1,593,827	1,535,314	58,513	2.0	1,798,955	1,717,667	81,288	2.0	12.9
Peloponnisos	3,081,753	2,804,252	277,501	3.8	3,378,470	3,091,937	286,533	3.8	9.6
Attiki	8,036,129	8,003,823	32,306	9.9	8,870,270	8,833,584	36,686	9.9	10.4
Voreio Aigaio*	1,530,785	1,530,785	0	1.9	1,750,671	1,750,671	0	2.0	14.4
Notio Aigaio	18,992,125	18,833,749	158,376	23.3	21,454,506	21,310,044	144,462	24.0	13.0
Kriti	22,849,147	22,807,734	41,413	28.0	24,516,300	24,473,913	42,387	27.5	7.3

* The arrivals and nights spent refer to hotels, similar establishments and tourist campsites, which are registered to the Hellenic Chamber of Hotels. For these specific regions tourist campsites are not registered to the Hellenic Chamber of Hotels.

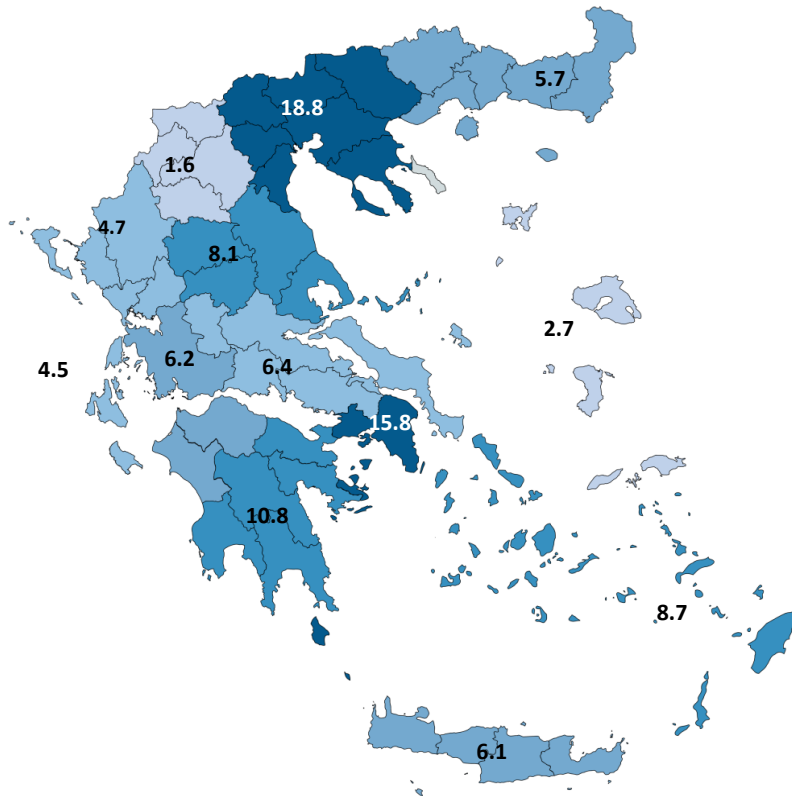
Graph 5. Percentage distribution of arrivals at hotels, similar establishments and tourist campsites, by NUTS 2 Region, 2017



Graph 6. Percentage distribution of nights spent in hotels, similar establishments and tourist campsites, by NUTS 2 Region, 2017



Graph 7. Percentage distribution of nights spent by residents in hotels, similar establishments and tourist campsites, by NUTS 2 Region, 2017



Graph 8. Percentage distribution of nights spent by non-residents in hotels, similar establishments and tourist campsites, by NUTS 2 Region, 2017

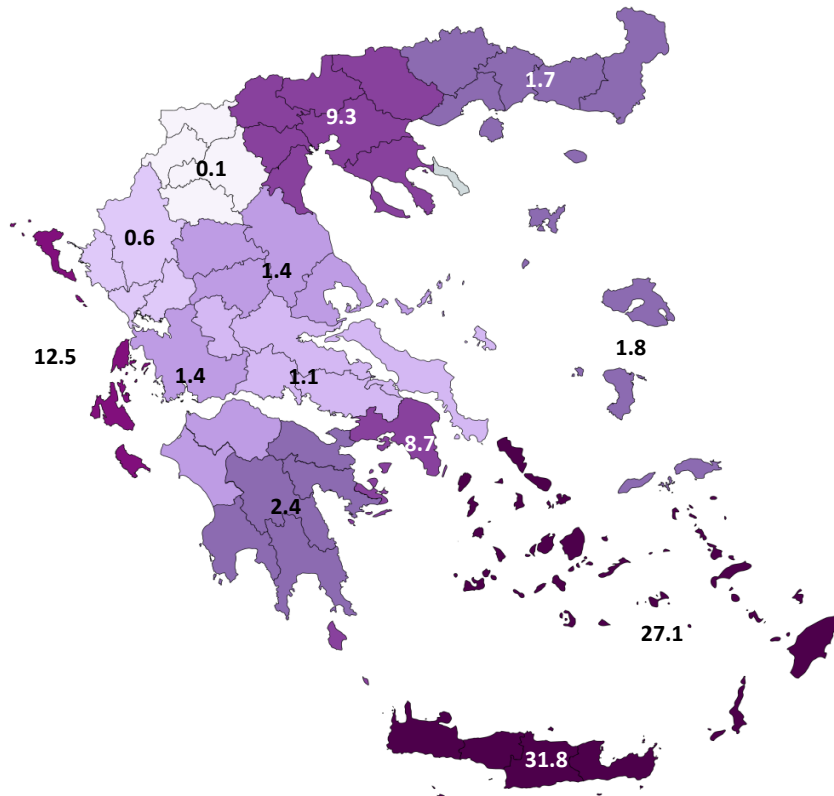


Table 6. Occupancy of bed-places that were in operation in hotels and similar establishments, by NUTS 2 Region, 2016 and 2017

	Occupancy of bed-places %	
	2016	2017
Annual occupancy	50.1	52.8
Anatoliki Makedonia, Thraki	35.5	36.8
Kentriki Makedonia	46.3	49.1
Dytiki Makedonia	15.9	17.2
Thessalia	30.2	31.8
Ipeiros	27.9	30.6
Ionia Nisia	62.1	63.7
Dytiki Ellada	35.1	36.4
Stereia Ellada	25.6	27.9
Peloponnisos	30.5	32.2
Attiki	47.2	50.5
Voreio Aigaio	33.4	36.8
Notio Aigaio	57.6	62.0
Kriti	65.2	66.8

Graph 9. Occupancy of bed-places that were in operation in hotels and similar establishments, by NUTS 2 Region, 2016 and 2017

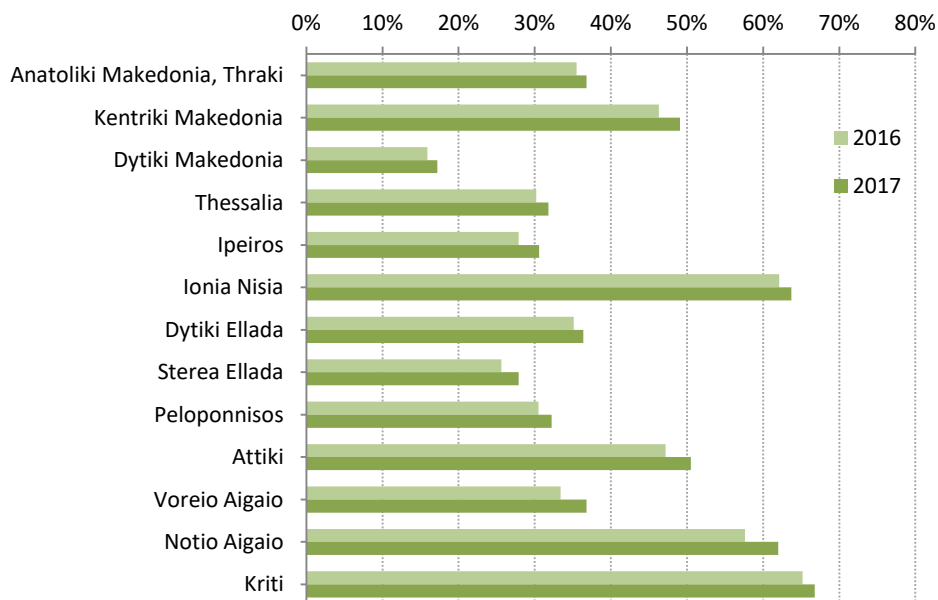


Table 7. Arrivals of non-residents at hotels, similar establishments and tourist campsites, by country of residence, 2016 and 2017

	2016				2017				Change % of total 2017/2016
	Total	Hotels and similar establishments	Tourist campsites	Percentage % of total	Total	Hotels and similar establishments	Tourist campsites	Percentage % of total	
Total	13,199,674	12,999,947	199,727	100.0	15,065,146	14,830,511	234,635	100.0	14.1
Europe	10,963,433	10,784,758	178,675	83.1	12,370,587	12,153,442	217,145	82.1	12.8
European Union	9,052,760	8,890,194	162,566	68.6	10,257,676	10,060,684	196,992	68.1	13.3
Austria	191,089	183,688	7,401	1.4	212,225	203,123	9,102	1.4	11.1
Belgium	305,162	301,813	3,349	2.3	321,624	317,825	3,799	2.1	5.4
Bulgaria	252,230	228,088	24,142	1.9	268,614	239,974	28,640	1.8	6.5
France	1,057,568	1,026,453	31,115	8.0	1,164,128	1,128,919	35,209	7.7	10.1
Germany	1,723,460	1,689,031	34,429	13.1	2,054,654	2,009,852	44,802	13.6	19.2
Denmark	232,910	231,414	1,496	1.8	268,390	266,834	1,556	1.8	15.2
Estonia	23,113	22,960	153	0.2	29,172	29,010	162	0.2	26.2
United Kingdom	1,841,946	1,836,930	5,016	14.0	1,989,262	1,983,888	5,374	13.2	8.0
Ireland	48,195	47,422	773	0.4	53,202	52,174	1,028	0.4	10.4
Spain	178,522	175,321	3,201	1.4	205,388	202,524	2,864	1.4	15.0
Italy	671,518	649,442	22,076	5.1	744,695	718,960	25,735	4.9	10.9
Croatia	13,755	13,526	229	0.1	17,004	16,839	165	0.1	23.6
Cyprus	226,751	226,306	445	1.7	226,485	226,113	372	1.5	-0.1
Latvia	19,574	19,525	49	0.1	24,884	24,761	123	0.2	27.1
Lithuania	36,271	36,160	111	0.3	43,157	42,963	194	0.3	19.0
Luxembourg	17,317	17,252	65	0.1	21,918	21,835	83	0.1	26.6
Malta	7,804	7,779	25	0.1	8,325	8,262	63	0.1	6.7
Netherlands	434,121	420,513	13,608	3.3	567,479	551,060	16,419	3.8	30.7
Hungary	59,137	57,641	1,496	0.4	67,977	65,646	2,331	0.5	14.9
Poland	461,777	457,252	4,525	3.5	558,723	552,790	5,933	3.7	21.0
Portugal	28,607	28,342	265	0.2	32,464	32,023	441	0.2	13.5
Romania	311,625	307,942	3,683	2.4	363,327	357,987	5,340	2.4	16.6
Slovak Republic	64,802	64,423	379	0.5	73,673	73,019	654	0.5	13.7
Slovenia	29,306	27,555	1,751	0.2	33,673	31,097	2,576	0.2	14.9
Sweden	465,103	464,331	772	3.5	503,770	502,859	911	3.3	8.3
Czech Republic	188,855	187,009	1,846	1.4	227,999	225,139	2,860	1.5	20.7
Finland	162,242	162,076	166	1.2	175,464	175,208	256	1.2	8.1
Total of other European countries	1,910,673	1,894,564	16,109	14.5	2,112,911	2,092,758	20,153	14.0	10.6
Iceland	6,915	6,896	19	0.1	10,074	10,044	30	0.1	45.7
Norway	263,387	263,107	280	2.0	277,549	277,183	366	1.8	5.4
Switzerland (incl. Liechtenstein)	221,582	216,362	5,220	1.7	243,633	237,430	6,203	1.6	10.0
Russia	747,960	746,720	1,240	5.7	847,624	846,185	1,439	5.6	13.3
Turkey	260,873	258,365	2,508	2.0	301,312	297,118	4,194	2.0	15.5
Other European countries	409,956	403,114	6,842	3.1	432,719	424,798	7,921	2.9	5.6
Africa	67,477	67,185	292	0.5	65,948	65,427	521	0.4	-2.3
America	957,695	949,505	8,190	7.3	1,170,586	1,163,609	6,977	7.8	22.2
North America	821,069	817,050	4,019	6.2	1,000,591	996,786	3,805	6.6	21.9
USA	690,886	688,941	1,945	5.2	845,424	843,595	1,829	5.6	22.4
Canada	130,183	128,109	2,074	1.0	155,167	153,191	1,976	1.0	19.2
South and Central America	136,626	132,455	4,171	1.0	169,995	166,823	3,172	1.1	24.4
Asia	962,419	960,818	1,601	7.3	1,172,722	1,170,742	1,980	7.8	21.9
Japan	45,201	45,050	151	0.3	57,665	57,535	130	0.4	27.6
People's republic of China	221,143	220,843	300	1.7	292,705	292,526	179	1.9	32.4
Other Asian countries	696,075	694,925	1,150	5.3	822,352	820,681	1,671	5.5	18.1
Oceania	232,731	221,797	10,934	1.8	271,961	263,987	7,974	1.8	16.9
Australia	217,906	208,026	9,880	1.7	254,797	247,758	7,039	1.7	16.9
New Zealand and other Oceanian territories	14,825	13,771	1,054	0.1	17,164	16,229	935	0.1	15.8
Not specified	15,919	15,884	35	0.1	13,342	13,304	38	0.1	-16.2

Table 8. Nights spent by non-residents in hotels, similar establishments and tourist campsites, by country of residence, 2016 and 2017

	2016				2017				Change % of total 2017/2016
	Total	Hotels and similar establishments	Tourist campsites	Percentage % of total	Total	Hotels and similar establishments	Tourist campsites	Percentage % of total	
Total	66,727,447	65,941,418	786,029	100.0	74,344,832	73,474,232	870,600	100.0	11.4
Europe	60,945,066	60,221,094	723,972	91.3	67,744,601	66,926,409	818,192	91.1	11.2
European Union	50,388,843	49,746,615	642,228	75.5	56,237,638	55,518,565	719,073	75.6	11.6
Austria	1,168,599	1,130,145	38,454	1.8	1,251,063	1,207,271	43,792	1.7	7.1
Belgium	1,694,086	1,683,331	10,755	2.5	1,786,156	1,774,004	12,152	2.4	5.4
Bulgaria	880,185	751,197	128,988	1.3	925,593	792,567	133,026	1.2	5.2
France	4,676,071	4,591,717	84,354	7.0	5,001,060	4,909,089	91,971	6.7	7.0
Germany	11,509,843	11,366,922	142,921	17.2	13,397,230	13,231,492	165,738	18.0	16.4
Denmark	1,451,371	1,443,571	7,800	2.2	1,683,034	1,674,720	8,314	2.3	16.0
Estonia	137,923	137,541	382	0.2	167,924	167,401	523	0.2	21.8
United Kingdom	11,379,389	11,359,655	19,734	17.1	11,972,476	11,953,661	18,815	16.1	5.2
Ireland	204,462	201,393	3,069	0.3	216,458	212,216	4,242	0.3	5.9
Spain	431,668	422,814	8,854	0.6	491,800	484,608	7,192	0.7	13.9
Italy	2,840,371	2,753,261	87,110	4.3	3,076,508	2,984,525	91,983	4.1	8.3
Croatia	43,228	42,641	587	0.1	51,932	51,257	675	0.1	20.1
Cyprus	635,483	633,855	1,628	1.0	633,671	632,240	1,431	0.9	-0.3
Latvia	112,819	112,717	102	0.2	137,072	136,745	327	0.2	21.5
Lithuania	202,102	201,777	325	0.3	243,106	242,594	512	0.3	20.3
Luxembourg	95,178	94,839	339	0.1	114,363	114,067	296	0.2	20.2
Malta	29,035	28,955	80	0.0	27,993	27,747	246	0.0	-3.6
Netherlands	2,675,653	2,627,322	48,331	4.0	3,332,488	3,278,054	54,434	4.5	24.5
Hungary	318,815	312,326	6,489	0.5	363,891	354,433	9,458	0.5	14.1
Poland	2,735,492	2,718,941	16,551	4.1	3,300,828	3,278,308	22,520	4.4	20.7
Portugal	102,059	101,373	686	0.2	106,138	105,033	1,105	0.1	4.0
Romania	1,316,608	1,301,120	15,488	2.0	1,504,131	1,480,321	23,810	2.0	14.2
Slovak Republic	402,476	400,581	1,895	0.6	474,828	471,836	2,992	0.6	18.0
Slovenia	149,343	142,616	6,727	0.2	160,961	151,510	9,451	0.2	7.8
Sweden	2,858,051	2,855,660	2,391	4.3	3,117,452	3,114,304	3,148	4.2	9.1
Czech Republic	1,299,835	1,292,266	7,569	1.9	1,557,980	1,547,972	10,008	2.1	19.9
Finland	1,038,698	1,038,079	619	1.6	1,141,502	1,140,590	912	1.5	9.9
Total of other European countries	10,556,223	10,474,479	81,744	15.8	11,506,963	11,407,844	99,119	15.5	9.0
Iceland	32,063	32,026	37	0.0	44,316	44,188	128	0.1	38.2
Norway	1,804,757	1,803,905	852	2.7	1,890,815	1,889,716	1,099	2.5	4.8
Switzerland (incl. Liechtenstein)	1,174,060	1,157,163	16,897	1.8	1,257,039	1,237,847	19,192	1.7	7.1
Russia	5,133,567	5,127,264	6,303	7.7	5,708,936	5,702,627	6,309	7.7	11.2
Turkey	510,345	504,311	6,034	0.8	585,763	575,653	10,110	0.8	14.8
Other European countries.	1,901,431	1,849,810	51,621	2.8	2,020,094	1,957,813	62,281	2.7	6.2
Africa	217,072	215,925	1,147	0.3	204,742	202,499	2,243	0.3	-5.7
America	2,228,357	2,204,144	24,213	3.3	2,695,838	2,676,328	19,510	3.6	21.0
North America	1,902,331	1,890,428	11,903	2.9	2,296,896	2,286,350	10,546	3.1	20.7
USA	1,591,059	1,585,514	5,545	2.4	1,927,767	1,922,595	5,172	2.6	21.2
Canada	311,272	304,914	6,358	0.5	369,129	363,755	5,374	0.5	18.6
South and Central America	326,026	313,716	12,310	0.5	398,942	389,978	8,964	0.5	22.4
Asia	2,707,890	2,702,992	4,898	4.1	2,970,337	2,963,812	6,525	4.0	9.7
Japan	91,737	91,404	333	0.1	111,783	111,396	387	0.2	21.9
People's republic of China	364,688	364,075	613	0.5	469,185	468,776	409	0.6	28.7
Other Asian countries	2,251,465	2,247,513	3,952	3.4	2,389,369	2,383,640	5,729	3.2	6.1
Oceania	564,345	532,669	31,676	0.8	674,962	650,914	24,048	0.9	19.6
Australia	528,502	499,962	28,540	0.8	632,281	611,153	21,128	0.9	19.6
New Zealand and other Oceanian territories	35,843	32,707	3,136	0.1	42,681	39,761	2,920	0.1	19.1
Not specified	64,717	64,594	123	0.1	54,352	54,270	82	0.1	-16.0

EXPLANATORY NOTES

Arrivals and nights spent at hotels, similar establishments and tourist campsites Data on arrivals and nights spent at hotels, similar establishments and tourist campsites are collected from a monthly census survey. Each establishment fills in a questionnaire, for every month that it is in operation. It is mandatory for all hotels, similar establishments and tourist campsites to participate in the survey.

Legal frame The survey is conducted pursuant to Regulation 692/2011 of the European Parliament and of the Council.

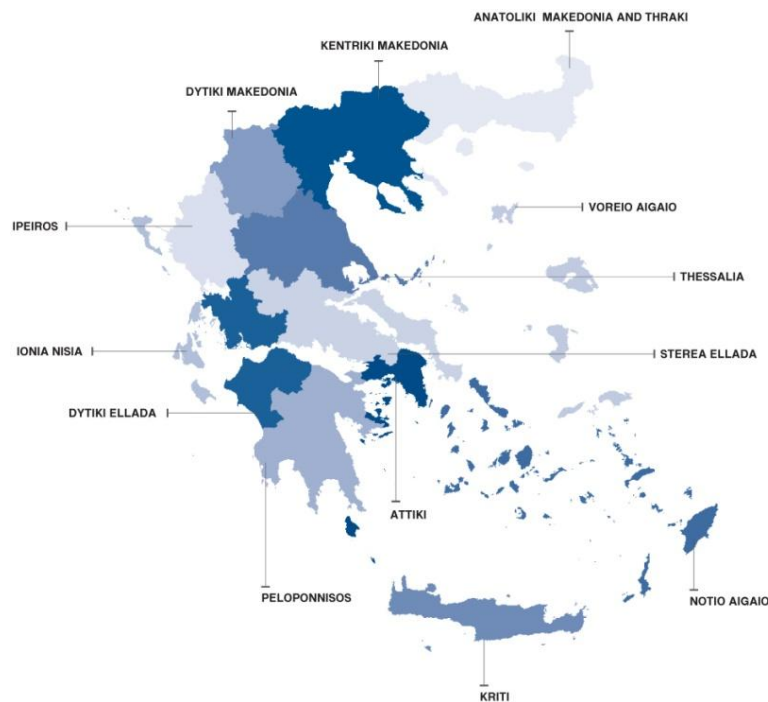
Reference unit Data refer to all establishments (hotels, similar establishments and tourist campsites) that are registered in the Hellenic Chamber of Hotels. ELSTAT receives the register every three months and subsequently it updates its register that is related to the survey.

Reference period January - December 2017 (Final data).

Coverage The results of the survey refer to about 80% of the total bed-places that operate in Greece. The reason why there is no estimation and projection of the results to 100% of the reference population is the fact that there is no information on the exact months during which each establishment is in operation. The lack of this information makes it impossible to make this estimation for every month and hence for the total of the year.

Geographical classification The geographical classification is based on *Nomenclature of Territorial Units for Statistics*.

Map of the 13 Regions (NUTS 2) of Greece



Definitions Resident: Every person, regardless of citizenship, that has resided in Greece for at least a year, or has arrived in Greece with the intention to reside in the country for at least 1 year.

Non-resident: Every person, regardless of citizenship, that is not considered to be resident.

Arrivals: The arrivals at the establishments are calculated for every person separately. The data refer to the total number of persons and not to the total number of rooms that were occupied. Only the persons that had at least one overnight stay at the establishment are counted.

Nights spent: The nights spent are calculated for every person separately. The data refer to the total number of nights spent by every person and not to the total number of nights spent in every room.

Occupancy of bed-places: The monthly occupancy of bed-places is calculated on the basis of the number of the bed-places, as reported by each establishment. The rate refers to the occupancy that was accomplished, as compared with the maximum occupancy that is expected according to the available bed-places. The occupancy of the period is the result of the average occupancy rates of every month of the period, weighted by the bed-places that were in operation for each month.

Methodology This is a monthly census survey. The data come from the establishments, which fill in a questionnaire (by paper form or on-line application) for every month that each establishment is in operation. During the year ELSTAT updates regularly the register of the hotels, similar establishments and tourist campsites, so that the data refer to the actual number of establishments that are in operation. Moreover, regular reminders for the submission of the data are sent to the establishments, so as ELSTAT can gather as much data as possible.

References More information at a more detailed geographical level of the survey results on hotels, similar establishments and tourist campsites is available on the website of ELSTAT at: <http://www.statistics.gr/en/statistics/-/publication/STO12/->