



## PRESS RELEASE

### INDUSTRIAL PRODUCTION INDEX: September 2019, y-o-y increase of 1.2%

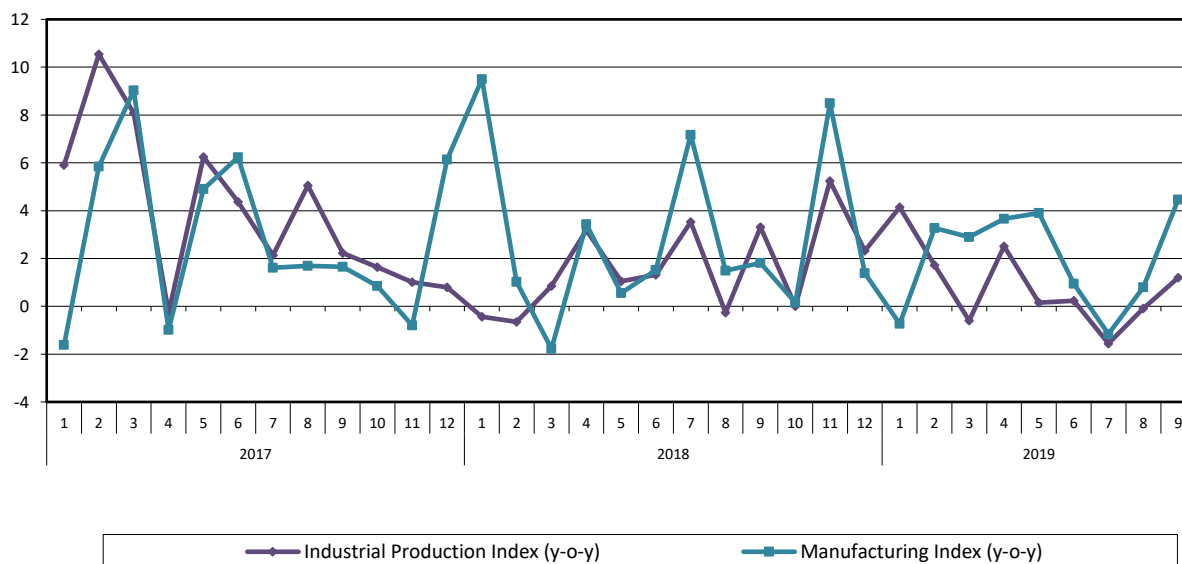
The Hellenic Statistical Authority announces the Industrial Production Index (IPI) with base year 2015=100.0 for September 2019, on the basis of provisional and working day adjusted data, as follows:

The Overall Industrial Production Index in September 2019 recorded an increase of 1.2% compared with September 2018. The corresponding annual rate of change of the Overall IPI in September 2018 was 3.3% (Table 1).

The average Overall Industrial Production Index for the period from January to September 2019 recorded an increase of 0.8% compared with the average IPI of the period from January to September 2018 (Table 2).

The seasonally adjusted Overall Industrial Production Index in September 2019 recorded an increase of 1.0% compared with August 2019 (Table 4).

**Graph 1. Evolution of annual rates of change (y-o-y) of the Industrial Production Index and the Manufacturing Index (%)**



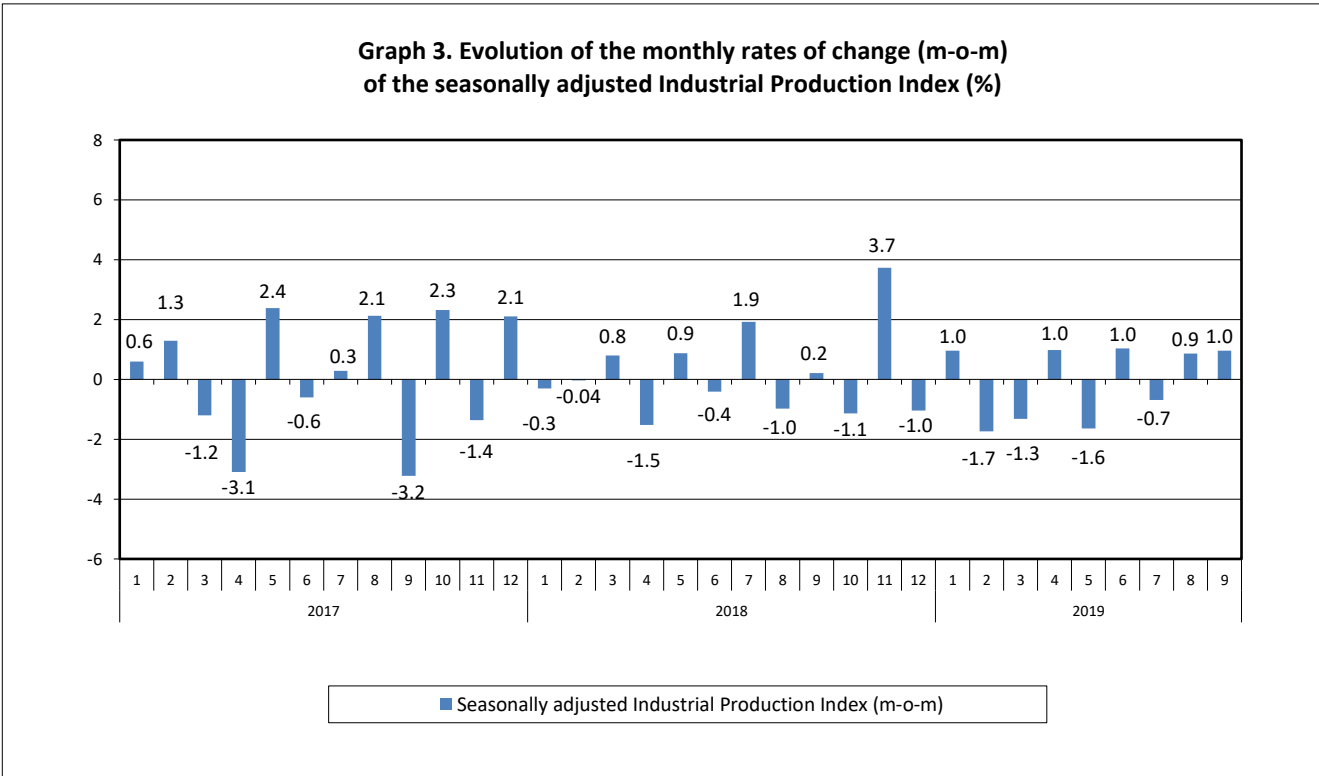
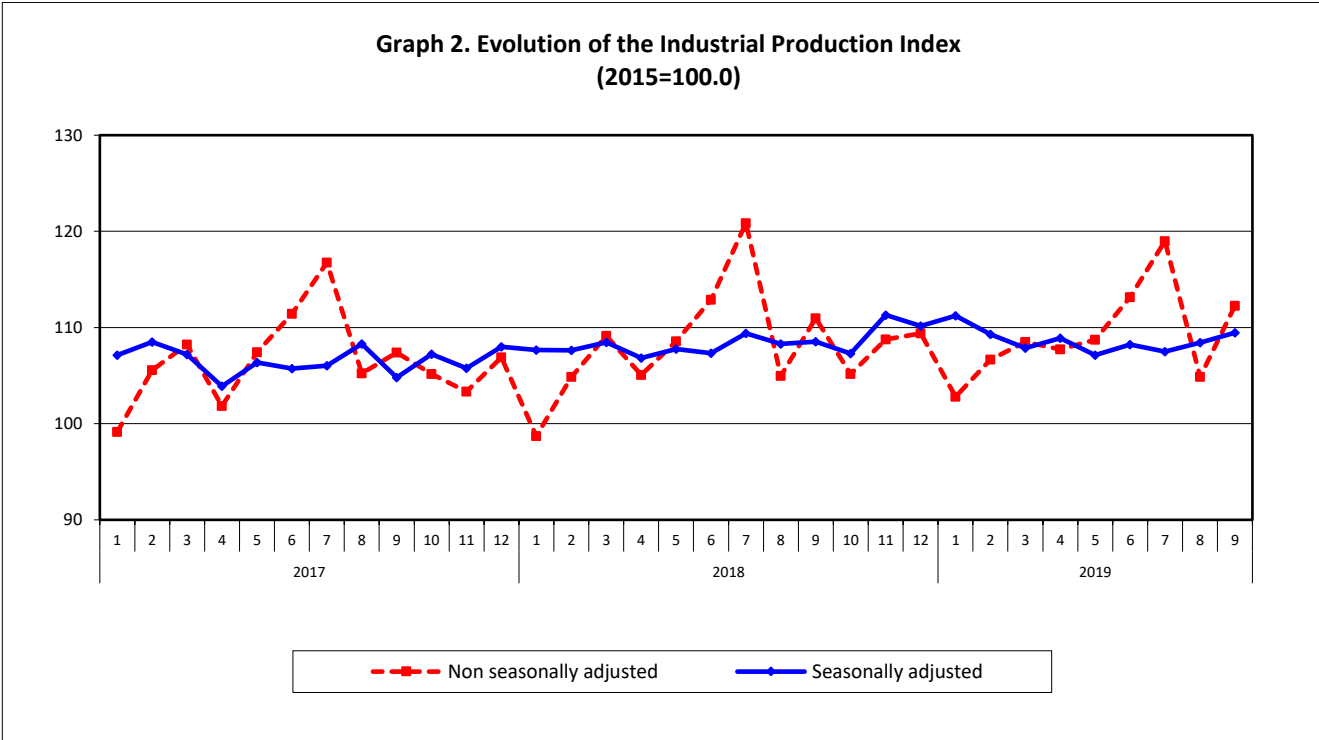
**Information for methodological issues:**

Business Statistics Division  
Manufacture-Construction Indices and Industrial Products Section  
Head of the Section: Diamantaki Aikaterini  
Tel: +30 213 135 2056  
Fax: +30 213 135 2506  
E-mail: [a.diamantaki@statistics.gr](mailto:a.diamantaki@statistics.gr)

**Information for data provision:**

Tel: +30 213 135 2022, 2308, 2310  
E-mail: [data.dissem@statistics.gr](mailto:data.dissem@statistics.gr)

The following graphs depict the evolution of the seasonally and non-seasonally adjusted Overall Industrial Production Index, as well as the monthly rates of change (m-o-m) of the seasonally adjusted index.



It should be noted that the time series with the seasonally adjusted indices is recalculated every time a new observation is added in the time series. Therefore, the seasonally adjusted data differ from the data published in the previous Press Release.

## Evolution of the Industrial Production Index in September 2019

### I. Annual changes: September 2019/ September 2018 (Table 1)

The 1.2% increase of the working day adjusted Overall IPI in September 2019, compared with the corresponding index in September 2018, is due to the annual changes of the sub-indices in the following industrial sections:

#### 1. Increase of:

- 4.5% in the Manufacturing Index. The increase was the result of the annual changes of the sub-indices in the following 2-digit divisions: food, tobacco products, printing and reproduction of recorded products, basic pharmaceutical products and pharmaceutical preparations, electrical equipment, motor vehicles, trailers and semi-trailers.
- 1.3% in the Water Supply Index

#### 2. Decrease of:

- 1.9% in the Mining and Quarrying Index. The decrease was mainly the result of the annual change of the sub-index in the following 2-digit divisions: mining of coal and lignite, extraction of crude petroleum and natural gas, mining support service activities.
- 9.4% in the Electricity Supply Index.

### II. Rates of change of the average index in the period January – September 2019 compared with the corresponding index of the period January – September 2018 (Table 2)

The 0.8% increase of the working day adjusted Overall IPI in the 9-month period January – September 2019, compared with the corresponding index in January – September 2018, is due to the corresponding rates of change of the sub-indices in the following industrial sections:

#### 1. Increase of:

- 2.0% in the Manufacturing Index.
- 0.7% in the Water Supply Index.

#### 2. Decrease of:

- 12.0% in the Mining and Quarrying Index.
- 2.0% in the Electricity Supply Index.

### III. Monthly changes: September 2019 / August 2019 (Table 4)

The 1.0% increase of the seasonally adjusted Overall IPI in September 2019, compared with the corresponding index in August 2019, is due to the monthly changes of the sub-indices in the following industrial sections:

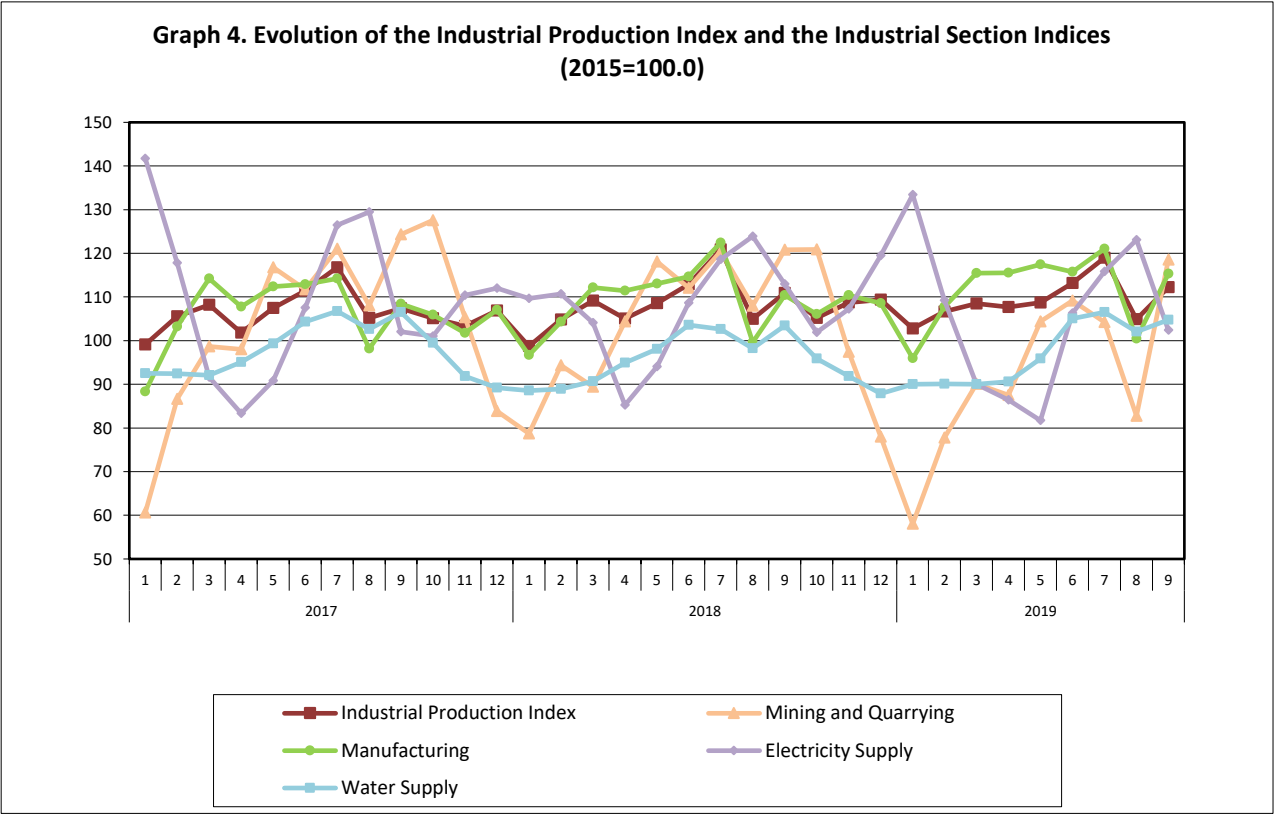
#### 1. Increase of:

- 15.3% in the Mining and Quarrying Index.
- 1.6% in the Manufacturing Index.
- 0.2% in the Water Supply Index.

#### 2. Decrease of:

- 2.9% in the Electricity Supply Index.

The following graph depicts the evolution of the Industrial Production Index and the Industrial Sections Indices.



**Table 1. Annual rates of change of the Industrial Production Index***(Working day adjusted data, according to the real number of working days)***Base year: 2015=100.0**

Code		Division	September			Rate of change (%)	
			2019*	2018	2017	2019/2018	2018/2017
OVERALL INDEX			112.27	110.95	107.39	1.2	3.3
B	MINING AND QUARRYING		118.56	120.83	124.35	-1.9	-2.8
05-06-09	Mining of coal and lignite – Extraction of crude petroleum and natural gas – Mining support service activities		51.46	99.13	104.76	-48.1	-5.4
07	Mining of metal ores		138.71	140.63	131.04	-1.4	7.3
08	Other mining and quarrying		121.50	117.21	124.93	3.7	-6.2
C	MANUFACTURING		115.32	110.39	108.43	4.5	1.8
10	Food		111.94	100.73	108.49	11.1	-7.2
11	Beverages		111.69	110.44	107.78	1.1	2.5
12	Tobacco products		125.76	111.50	98.87	12.8	12.8
13	Textiles		106.90	105.72	112.96	1.1	-6.4
14	Wearing apparel		95.73	101.18	99.93	-5.4	1.3
15	Leather and related products		108.75	114.30	103.74	-4.9	10.2
16	Wood and products of wood and cork, except furniture		112.87	112.88	106.35	-0.01	6.1
17	Paper and paper products		107.75	110.02	108.35	-2.1	1.5
18	Printing and reproduction of recorded products		108.41	96.47	91.59	12.4	5.3
19	Coke and refined petroleum products		109.74	119.13	110.06	-7.9	8.2
20	Chemicals and chemical products		133.79	126.71	119.95	5.6	5.6
21	Basic pharmaceutical products and pharmaceutical preparations		164.09	127.92	113.84	28.3	12.4
22	Rubber and plastic products		115.37	107.90	102.28	6.9	5.5
23	Other non-metallic mineral products		116.01	119.01	116.41	-2.5	2.2
24	Basic metals		128.15	136.26	130.84	-6.0	4.1
25	Fabricated metal products, except machinery and equipment		126.70	118.87	113.22	6.6	5.0
26	Computers, electronic and optical products		136.67	127.69	95.15	7.0	34.2
27	Electrical equipment		103.57	81.98	102.34	26.3	-19.9
28	Machinery and equipment n. e. c.		89.88	91.56	94.58	-1.8	-3.2
29	Motor vehicles, trailers and semi-trailers		74.67	62.33	73.37	19.8	-15.1
30	Other transport equipment		52.34	53.87	63.00	-2.8	-14.5
31	Furniture		121.42	120.38	110.60	0.9	8.8
32	Other manufacturing		114.62	112.59	105.38	1.8	6.8
33	Repair and installation of machinery and equipment		83.66	82.43	83.81	1.5	-1.7
D	ELECTRICITY SUPPLY		102.38	112.97	102.04	-9.4	10.7
35	Electricity supply		102.38	112.97	102.04	-9.4	10.7
E	WATER SUPPLY		104.76	103.44	106.48	1.3	-2.9
36	Water collection, treatment and supply		104.76	103.44	106.48	1.3	-2.9
MAIN INDUSTRIAL GROUPINGS							
1	Energy		104.94	113.98	105.01	-7.9	8.5
2	Intermediate goods		115.74	114.52	113.94	1.1	0.5
3	Capital goods		107.71	104.08	96.04	3.5	8.4
4	Consumer Durables		111.50	99.85	103.80	11.7	-3.8
5	Consumer Non-Durables		119.66	106.87	108.34	12.0	-1.4

\* Provisional data

*Note: The indices are rounded up to two decimal digits when published and percentage changes up to one decimal digit when published.*

**Table 2. Average indices of the period January – September and rates of change (%) of the Industrial Production Index**  
*(Working day adjusted data, according to the real number of working days)*

Base year: 2015=100.0

Code		Division	Average indices of the period Jan.-Sep.			Rate of change (%)	
			2019*	2018	2017	2019/2018	2018/2017
OVERALL INDEX			109.30	108.45	107.00	0.8	1.4
B	MINING AND QUARRYING		92.51	105.16	102.87	-12.0	2.2
05-06-09	Mining of coal and lignite – Extraction of crude petroleum and natural gas – Mining support service activities		61.89	80.21	92.33	-22.8	-13.1
07	Mining of metal ores		112.46	136.97	105.89	-17.9	29.4
08	Other mining and quarrying		90.15	97.89	103.38	-7.9	-5.3
C	MANUFACTURING		111.62	109.41	106.63	2.0	2.6
10	Food		106.45	105.12	105.29	1.3	-0.2
11	Beverages		106.81	107.04	101.33	-0.2	5.6
12	Tobacco products		110.59	86.25	104.66	28.2	-17.6
13	Textiles		103.08	106.17	111.47	-2.9	-4.8
14	Wearing apparel		87.20	92.95	93.84	-6.2	-0.9
15	Leather and related products		104.59	107.96	112.20	-3.1	-3.8
16	Wood and products of wood and cork, except furniture		106.72	104.99	105.81	1.6	-0.8
17	Paper and paper products		102.33	107.05	105.04	-4.4	1.9
18	Printing and reproduction of recorded products		99.00	95.30	93.89	3.9	1.5
19	Coke and refined petroleum products		108.25	116.37	111.39	-7.0	4.5
20	Chemicals and chemical products		128.01	119.33	111.84	7.3	6.7
21	Basic pharmaceutical products and pharmaceutical preparations		161.35	127.11	108.15	26.9	17.5
22	Rubber and plastic products		115.79	106.82	104.95	8.4	1.8
23	Other non-metallic mineral products		112.18	117.51	114.30	-4.5	2.8
24	Basic metals		126.70	129.42	125.68	-2.1	3.0
25	Fabricated metal products, except machinery and equipment		118.26	118.87	115.27	-0.5	3.1
26	Computers, electronic and optical products		136.53	109.64	95.38	24.5	15.0
27	Electrical equipment		101.07	96.73	105.02	4.5	-7.9
28	Machinery and equipment n. e. c.		101.62	97.56	96.41	4.2	1.2
29	Motor vehicles, trailers and semi-trailers		77.45	79.66	84.62	-2.8	-5.9
30	Other transport equipment		52.99	56.51	60.10	-6.2	-6.0
31	Furniture		116.87	117.95	101.22	-0.9	16.5
32	Other manufacturing		107.76	102.40	100.05	5.2	2.3
33	Repair and installation of machinery and equipment		87.34	82.36	81.66	6.0	0.9
D	ELECTRICITY SUPPLY		105.37	107.54	110.09	-2.0	-2.3
35	Electricity supply		105.37	107.54	110.09	-2.0	-2.3
E	WATER SUPPLY		97.22	96.57	99.07	0.7	-2.5
36	Water collection, treatment and supply		97.22	96.57	99.07	0.7	-2.5
MAIN INDUSTRIAL GROUPINGS							
1	Energy		105.39	109.17	109.37	-3.5	-0.2
2	Intermediate goods		111.36	112.27	110.28	-0.8	1.8
3	Capital goods		105.18	100.02	94.98	5.2	5.3
4	Consumer Durables		104.27	105.08	101.17	-0.8	3.9
5	Consumer Non-Durables		113.75	106.99	105.05	6.3	1.8

\* Provisional data

*Note: The indices are rounded up to two decimal digits when published and percentage changes up to one decimal digit when published.*

**Table 3. Monthly rate of change of the Industrial Production Index***(Working day adjusted data, according to the real number of working days)***Base year: 2015=100.0**

Code	Division	September 2019*	August 2019**	Rate of change (%) Sep. 2019 / Aug. 2019
<b>OVERALL INDEX</b>		<b>112.27</b>	<b>104.87</b>	<b>7.1</b>
<b>B</b>	<b>MINING AND QUARRYING</b>	<b>118.56</b>	<b>82.74</b>	<b>43.3</b>
05-06-09	Mining of coal and lignite – Extraction of crude petroleum and natural gas – Mining support service activities	51.46	32.57	58.0
07	Mining of metal ores	138.71	94.35	47.0
08	Other mining and quarrying	121.50	86.12	41.1
<b>C</b>	<b>MANUFACTURING</b>	<b>115.32</b>	<b>100.42</b>	<b>14.8</b>
10	Food	111.94	120.15	-6.8
11	Beverages	111.69	107.64	3.8
12	Tobacco products	125.76	90.52	38.9
13	Textiles	106.90	54.12	97.5
14	Wearing apparel	95.73	79.80	20.0
15	Leather and related products	108.75	52.68	106.4
16	Wood and products of wood and cork, except furniture	112.87	81.34	38.8
17	Paper and paper products	107.75	87.48	23.2
18	Printing and reproduction of recorded products	108.41	71.28	52.1
19	Coke and refined petroleum products	109.74	119.15	-7.9
20	Chemicals and chemical products	133.79	94.39	41.7
21	Basic pharmaceutical products and pharmaceutical preparations	164.09	109.29	50.1
22	Rubber and plastic products	115.37	87.70	31.5
23	Other non-metallic mineral products	116.01	97.41	19.1
24	Basic metals	128.15	99.71	28.5
25	Fabricated metal products, except machinery and equipment	126.70	79.93	58.5
26	Computers, electronic and optical products	136.67	110.18	24.0
27	Electrical equipment	103.57	69.47	49.1
28	Machinery and equipment n. e. c.	89.88	64.82	38.7
29	Motor vehicles, trailers and semi-trailers	74.67	58.91	26.8
30	Other transport equipment	52.34	41.82	25.2
31	Furniture	121.42	74.80	62.3
32	Other manufacturing	114.62	83.79	36.8
33	Repair and installation of machinery and equipment	83.66	72.84	14.8
<b>D</b>	<b>ELECTRICITY SUPPLY</b>	<b>102.38</b>	<b>123.07</b>	<b>-16.8</b>
35	Electricity supply	102.38	123.07	-16.8
<b>E</b>	<b>WATER SUPPLY</b>	<b>104.76</b>	<b>102.07</b>	<b>2.6</b>
36	Water collection, treatment and supply	104.76	102.07	2.6
<b>MAIN INDUSTRIAL GROUPINGS</b>				
1	Energy	104.94	119.56	-12.2
2	Intermediate goods	115.74	88.99	30.1
3	Capital goods	107.71	77.28	39.4
4	Consumer Durables	111.50	65.06	71.4
5	Consumer Non-Durables	119.66	108.71	10.1

\* Provisional data    \*\*Revised data

*Note: The indices are rounded up to two decimal digits when published and percentage changes up to one decimal digit when published.*

**Table 4. Monthly rate of change of the seasonally adjusted Industrial Production Index**

Base year: 2015=100.0

Code	Division	September 2019	August 2019	Rate of change (%) Sep. 2019 / Aug. 2019
<b>OVERALL INDEX</b>		<b>109.46</b>	<b>108.42</b>	<b>1.0</b>
<b>B</b>	<b>MINING AND QUARRYING</b>	<b>97.35</b>	<b>84.43</b>	<b>15.3</b>
05-06-09	Mining of coal and lignite – Extraction of crude petroleum and natural gas – Mining support service activities	–	–	–
07	Mining of metal ores	126.26	102.00	23.8
08	Other mining and quarrying	97.69	87.51	11.6
<b>C</b>	<b>MANUFACTURING</b>	<b>111.53</b>	<b>109.77</b>	<b>1.6</b>
10	Food	107.00	101.19	5.7
11	Beverages	100.11	97.34	2.9
12	Tobacco products	117.54	106.00	10.9
13	Textiles	104.25	106.43	-2.0
14	Wearing apparel	89.67	89.31	0.4
15	Leather and related products	103.38	98.85	4.6
16	Wood and products of wood and cork, except furniture	105.49	105.23	0.2
17	Paper and paper products	102.08	104.06	-1.9
18	Printing and reproduction of recorded products	109.64	96.57	13.5
19	Coke and refined petroleum products	108.04	117.71	-8.2
20	Chemicals and chemical products	124.69	126.98	-1.8
21	Basic pharmaceutical products and pharmaceutical preparations	177.26	193.68	-8.5
22	Rubber and plastic products	114.41	114.17	0.2
23	Other non-metallic mineral products	108.62	110.42	-1.6
24	Basic metals	124.94	120.58	3.6
25	Fabricated metal products, except machinery and equipment	123.21	106.17	16.1
26	Computers, electronic and optical products	137.69	142.29	-3.2
27	Electrical equipment	103.71	102.89	0.8
28	Machinery and equipment n. e. c.	100.06	101.84	-1.7
29	Motor vehicles, trailers and semi-trailers	76.92	93.28	-17.5
30	Other transport equipment	59.17	64.88	-8.8
31	Furniture	118.41	113.69	4.2
32	Other manufacturing	111.45	120.08	-7.2
33	Repair and installation of machinery and equipment	90.76	100.29	-9.5
<b>D</b>	<b>ELECTRICITY SUPPLY</b>	<b>102.91</b>	<b>106.03</b>	<b>-2.9</b>
35	Electricity supply	102.91	106.03	-2.9
<b>E</b>	<b>WATER SUPPLY</b>	<b>96.18</b>	<b>96.02</b>	<b>0.2</b>
36	Water collection, treatment and supply	96.18	96.02	0.2
<b>MAIN INDUSTRIAL GROUPINGS</b>				
1	Energy	103.74	108.85	-4.7
2	Intermediate goods	110.58	108.08	2.3
3	Capital goods	112.41	111.04	1.2
4	Consumer Durables	109.24	102.43	6.7
5	Consumer Non-Durables	114.72	107.78	6.4

*Notes:*

1. The indices are rounded up to two decimal digits when published and percentage changes up to one decimal digit when published.
2. The whole time-series with seasonally adjusted indices is recalculated every time a new observation is added in the time-series.
3. The composed index of divisions 05-06-09 is not seasonally adjusted, due to the fact that it is calculated from January 2015 and thus the number of observations is not adequate.



**Table 5. Evolution of the Overall Industrial Production Index**

*(Working day adjusted data, according to the real number of working days)*

**Base year: 2015=100.0**

Year and month	Overall Index	Monthly rate of change (%)	Annual rate of change (%)	12-month average indices (moving average)	Rate of change of the 12-month average indices (%)
<b>2017:</b> 1	99.14	-6.5	5.9	103.01	2.7
2	105.55	6.5	10.5	103.85	3.8
3	108.22	2.5	8.1	104.52	4.6
4	101.85	-5.9	-0.3	104.50	4.4
5	107.43	5.5	6.2	105.03	4.5
6	111.43	3.7	4.4	105.42	4.3
7	116.75	4.8	2.1	105.62	4.0
8	105.23	-9.9	5.1	106.04	4.2
9	107.39	2.1	2.2	106.24	4.4
10	105.16	-2.1	1.6	106.38	4.0
11	103.34	-1.7	1.0	106.46	3.9
12	106.90	3.5	0.8	106.53	3.9
<b>Annual average</b>	<b>106.53</b>				
<b>2018:</b> 1	98.71	-7.7	-0.4	106.50	3.4
2	104.86	6.2	-0.7	106.44	2.5
3	109.14	4.1	0.8	106.52	1.9
4	105.08	-3.7	3.2	106.79	2.2
5	108.56	3.3	1.0	106.88	1.8
6	112.90	4.0	1.3	107.00	1.5
7	120.86	7.0	3.5	107.34	1.6
8	104.96	-13.2	-0.3	107.32	1.2
9	110.95	5.7	3.3	107.62	1.3
10	105.16	-5.2	0.004	107.62	1.2
11	108.75	3.4	5.2	108.07	1.5
12	109.38	0.6	2.3	108.28	1.6
<b>Annual average</b>	<b>108.28</b>				
<b>2019*:</b> 1	102.80	-6.0	4.1	108.62	2.0
2	106.67	3.8	1.7	108.77	2.2
3	108.49	1.7	-0.6	108.71	2.1
4	107.72	-0.7	2.5	108.93	2.0
5	108.72	0.9	0.1	108.95	1.9
6	113.17	4.1	0.2	108.97	1.8
7	118.98	5.1	-1.6	108.81	1.4
8	104.87	-11.9	-0.1	108.80	1.4
9	112.27	7.1	1.2	108.91	1.2

\* Provisional data

*Note: The indices are rounded up to two decimal digits when published and percentage changes up to one decimal digit when published.*

**Table 6. Monthly evolution of the seasonally adjusted Overall Industrial Production Index and Main Industrial Groupings**

**Base year: 2015=100.0**

Year and month		Overall Index		Energy		Intermediate goods		Capital goods		Consumer durables		Consumer non-durables	
		Index	Monthly rate of change (%)	Index	Monthly rate of change (%)	Index	Monthly rate of change (%)	Index	Monthly rate of change (%)	Index	Monthly rate of change (%)	Index	Monthly rate of change (%)
<b>2017:</b>	1	107.13	0.6	119.84	4.4	104.55	2.5	93.18	-5.0	91.06	2.4	98.27	-4.6
	2	108.51	1.3	113.23	-5.5	109.53	4.8	106.58	14.4	101.14	11.1	102.90	4.7
	3	107.21	-1.2	106.95	-5.6	110.86	1.2	103.28	-3.1	110.68	9.4	105.55	2.6
	4	103.89	-3.1	107.29	0.3	107.22	-3.3	93.71	-9.3	99.45	-10.1	100.11	-5.2
	5	106.37	2.4	108.99	1.6	109.25	1.9	102.73	9.6	104.32	4.9	102.03	1.9
	6	105.73	-0.6	107.73	-1.1	108.10	-1.1	103.82	1.1	103.73	-0.6	102.06	0.03
	7	106.03	0.3	107.38	-0.3	109.88	1.6	105.23	1.4	100.16	-3.4	101.90	-0.2
	8	108.28	2.1	107.99	0.6	114.65	4.3	98.15	-6.7	100.18	0.02	106.76	4.8
	9	104.79	-3.2	103.91	-3.8	108.79	-5.1	101.46	3.4	101.80	1.6	103.78	-2.8
	10	107.23	2.3	107.49	3.4	111.45	2.4	101.00	-0.5	103.97	2.1	105.43	1.6
	11	105.77	-1.4	111.08	3.3	107.37	-3.7	94.92	-6.0	101.33	-2.5	101.19	-4.0
	12	108.00	2.1	106.88	-3.8	111.98	4.3	100.60	6.0	111.88	10.4	108.00	6.7
<b>Annual average</b>		<b>106.58</b>		<b>109.06</b>		<b>109.47</b>		<b>100.39</b>		<b>102.48</b>		<b>103.17</b>	
<b>2018:</b>	1	107.67	-0.3	104.03	-2.7	113.49	1.4	111.81	11.1	112.06	0.2	106.24	-1.6
	2	107.62	-0.04	109.14	4.9	110.66	-2.5	100.26	-10.3	108.01	-3.6	105.35	-0.8
	3	108.48	0.8	114.01	4.5	108.21	-2.2	102.38	2.1	105.61	-2.2	103.76	-1.5
	4	106.82	-1.5	107.94	-5.3	111.24	2.8	110.36	7.8	107.01	1.3	101.11	-2.5
	5	107.76	0.9	109.89	1.8	109.63	-1.4	106.09	-3.9	106.29	-0.7	104.26	3.1
	6	107.32	-0.4	108.00	-1.7	109.78	0.1	103.61	-2.3	109.09	2.6	105.47	1.2
	7	109.38	1.9	107.17	-0.8	113.88	3.7	105.96	2.3	101.58	-6.9	109.86	4.2
	8	108.31	-1.0	109.97	2.6	113.92	0.03	105.28	-0.6	102.90	1.3	103.04	-6.2
	9	108.54	0.2	112.70	2.5	110.17	-3.3	108.99	3.5	98.57	-4.2	102.63	-0.4
	10	107.30	-1.1	107.72	-4.4	108.67	-1.4	104.67	-4.0	100.99	2.5	106.74	4.0
	11	111.31	3.7	110.12	2.2	110.81	2.0	108.25	3.4	100.91	-0.1	114.46	7.2
	12	110.15	-1.0	110.60	0.4	108.46	-2.1	107.42	-0.8	103.76	2.8	111.98	-2.2
<b>Annual average</b>		<b>108.39</b>		<b>109.27</b>		<b>110.74</b>		<b>106.26</b>		<b>104.73</b>		<b>106.24</b>	
<b>2019:</b>	1	111.22	1.0	114.47	3.5	108.94	0.4	109.62	2.0	100.76	-2.9	110.01	-1.8
	2	109.28	-1.7	107.34	-6.2	109.98	1.0	113.89	3.9	101.79	1.0	110.25	0.2
	3	107.85	-1.3	101.04	-5.9	112.73	2.5	112.62	-1.1	99.07	-2.7	111.47	1.1
	4	108.91	1.0	104.04	3.0	111.95	-0.7	109.56	-2.7	105.22	6.2	112.45	0.9
	5	107.13	-1.6	99.25	-4.6	110.79	-1.0	108.99	-0.5	105.14	-0.1	113.41	0.9
	6	108.23	1.0	105.65	6.4	109.53	-1.1	110.07	1.0	104.74	-0.4	110.04	-3.0
	7	107.49	-0.7	102.39	-3.1	108.97	-0.5	111.83	1.6	109.75	4.8	111.25	1.1
	8	108.42	0.9	108.85	6.3	108.08	-0.8	111.04	-0.7	102.43	-6.7	107.78	-3.1
	9	109.46	1.0	103.74	-4.7	110.58	2.3	112.41	1.2	109.24	6.7	114.72	6.4

**Notes:**

1. The indices are rounded up to two decimal digits when published and percentage changes up to one decimal digit when published.
2. The whole time-series with seasonally adjusted indices is recalculated every time a new observation is added in the time-series.

## METHODOLOGICAL NOTES

<b>Generally</b>	The Industrial Production Index (IPI) in Greece has been compiled by the Hellenic Statistical Authority (ELSTAT) from 1959 onwards.
<b>Purpose of the index</b>	The objective of the index is to compare the magnitude (volume) of the output in the current month in the mining and quarrying, manufacturing, electricity and water supply divisions with the corresponding output of a given fixed period, which is considered as base period. The Industrial Production Index shows the evolution of the value added of the production factors cost, at constant prices.
<b>Legal framework</b>	The compilation of the IPI is governed by Council Regulation (EC) No 1165/98 concerning short-term statistics. Furthermore, the IPI is governed by Regulation (EC) No 1893/2006 of the European Parliament and of the Council, by Commission Regulation (EC) No 656/2007 and by Council Regulation (EC) No 451/2008.
<b>Reference period</b>	Month.
<b>Base year</b>	2015=100.0.
<b>Revision</b>	The IPI is a fixed base index. The Industrial Production Index was currently revised with new base year 2015 (2015=100.0) according to the provisions of Council Regulation No 1165/98 concerning short-term statistics. Short-term indices are revised every five (5) years, particularly in calendar years ending in 0 or 5.
<b>Statistical classifications</b>	At the level of branches of economic activities, the statistical classification of economic activities NACE Rev.2 of EU was used (Regulation No 1893/2006), while at the level of main industrial groups, the allocation of two-digit and three-digit NACE Rev. 2 headings to categories of aggregate classification was used, in accordance with Council Regulation No 656/2007. At product level, the statistical classification CPA 2008 of EU was used, according to Council Regulation No 451/2008.
<b>Geographical coverage</b>	The Index covers the whole Country.
<b>Coverage of economic activities</b>	The index covers all the sections of industry, the main industrial groups, as well as all levels of economic activity.
<b>Statistical survey</b>	The data are collected from a sample of 1,263 enterprises. The survey covers 325 products and the measurement of the surveyed products is made in terms of output quantities or in terms of production value or turnover, according to the specific features in each branch of economic activity.
<b>Seasonal adjustment</b>	Seasonal adjustment is the procedure followed to remove the impact of seasonality on the time-series (i.e. the impact of monthly effects, e.g. holidays, tourist period etc.), in order to improve comparability over time. The method used is TRAMO-SEATS with the use of JDemetra+ 2.0.0. For the seasonal adjustment of the Industrial Production Index at 2-digit level of NACE Rev.2, at section level (B – Mining and Quarrying, C – Manufacturing, D – Electricity and E – Water Supply) and for the Main Industrial Groupings (MIGs), the direct approach is applied, namely each time-series is seasonally adjusted independently. For the overall Industrial Production Index, the indirect approach is applied, with the seasonally adjusted IPI being computed by aggregating the seasonally adjusted MIGs using appropriate weights.
<b>Publication of data</b>	The revised IPI with the new base year 2015 (2015=100.0) is released since July 2019, with May 2019 as the first reference month. Data with base year 2015=100.0 are available from January 2000 onwards.
<b>References</b>	More information about the methodology concerning the compilation and calculation of the index and for the time series is available on the website of the Hellenic Statistical Authority (ELSTAT) ( <a href="http://www.statistics.gr/en/statistics/-/publication/DKT21/">http://www.statistics.gr/en/statistics/-/publication/DKT21/</a> ).