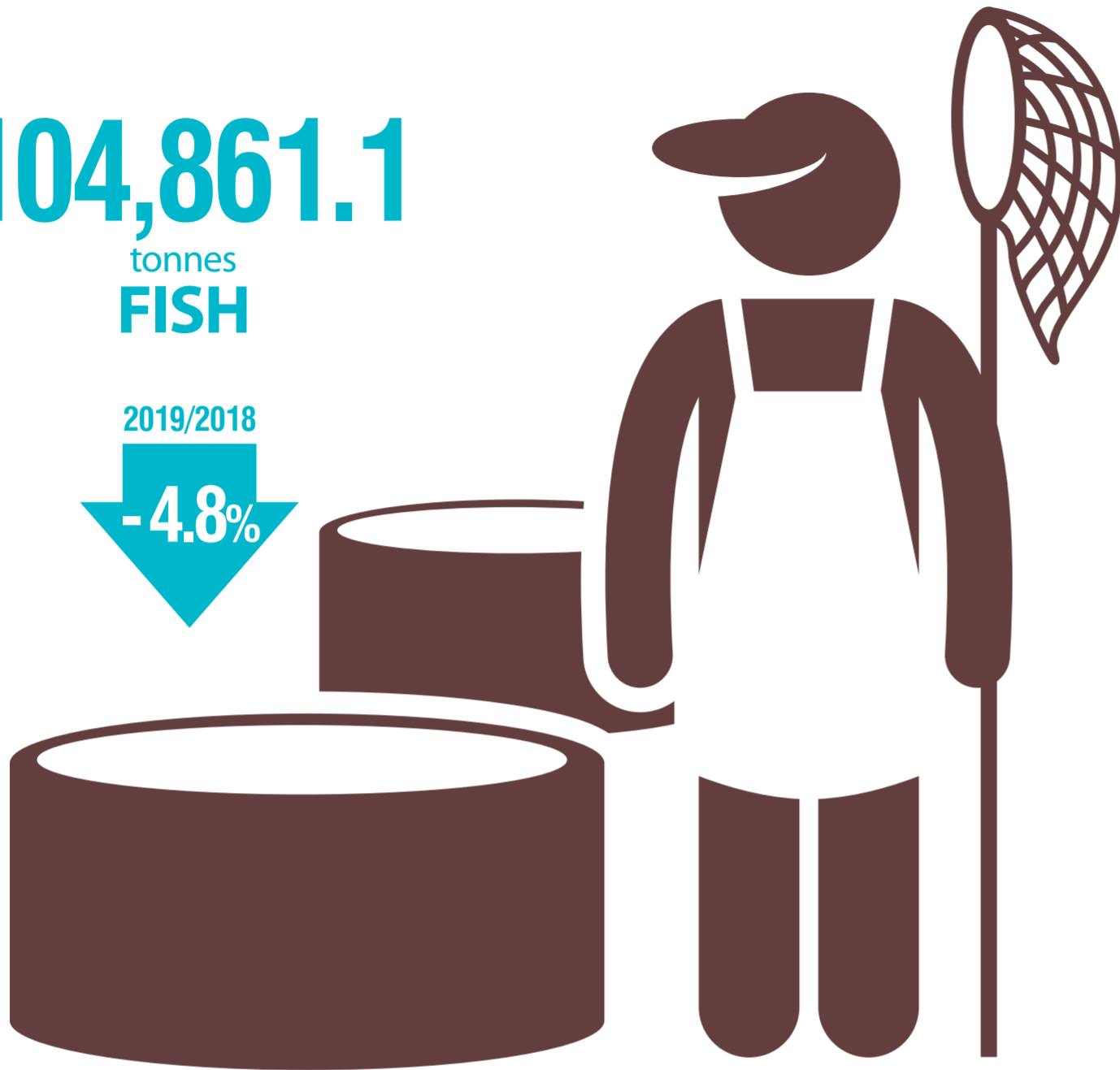


AQUACULTURE SURVEY, 2019

104,861.1
tonnes
FISH

2019/2018
-4.8%



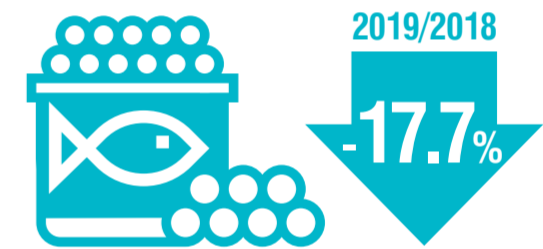
23,696.7
tonnes
MOLLUSCS AND CRUSTACEANS



142.3
tonnes
AQUATIC PLANTS AND SEAWEEDS



1.7
tonnes
FISH EGGS



PRODUCTION OF FISH LARVA IN HATCHERIES AND NURSERIES (thousand juveniles)

	208,470			GILTHEAD SEABREAM
	182,909			EUROPEAN SEABASS
	17,378			OTHER
	6,094			TROUT

EMPLOYED PERSONS

