



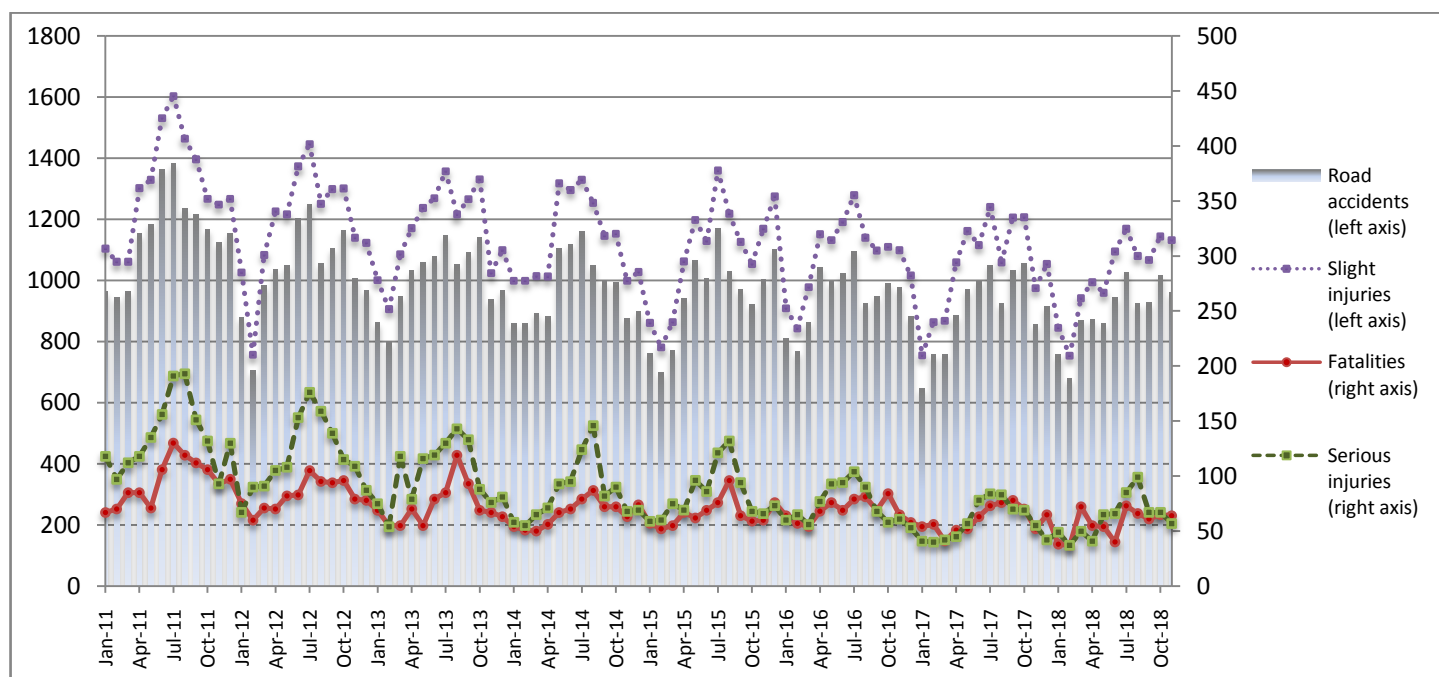
PRESS RELEASE

ROAD ACCIDENTS: November 2018

The Hellenic Statistical Authority (ELSTAT) announces provisional¹ data on Road Accidents for November 2018. In particular, the road traffic accidents which occurred in Greece, resulting in death or injury, increased by 11.9% in comparison with the corresponding month of 2017 (959 road accidents in November 2018, against 857 road accidents in November 2017).

The casualties of the injury-causing accidents that occurred in November 2018 were as follows: 64 deaths, 57 serious injuries and 1,132 slight injuries. In contrast, in November 2017 the corresponding figures were: 52 deaths, 55 serious injuries and 975 slight injuries. Therefore, road accident casualties in November 2018 increased by 23.1% for deaths, by 3.6% for serious injuries and by 16.1% for slight injuries.

**Graph 1: Road traffic accidents and casualties,
January 2011 - November 2018**



Provisional data: Jan 18 –Nov 18

Information:

Social Statistics Division

Justice and Public Order Statistics Section

D. Athanasopoulou

Tel: +30 213 1352767, Fax : +30 213 1352764

e-mail: d.athanasopoulou@statistics.gr

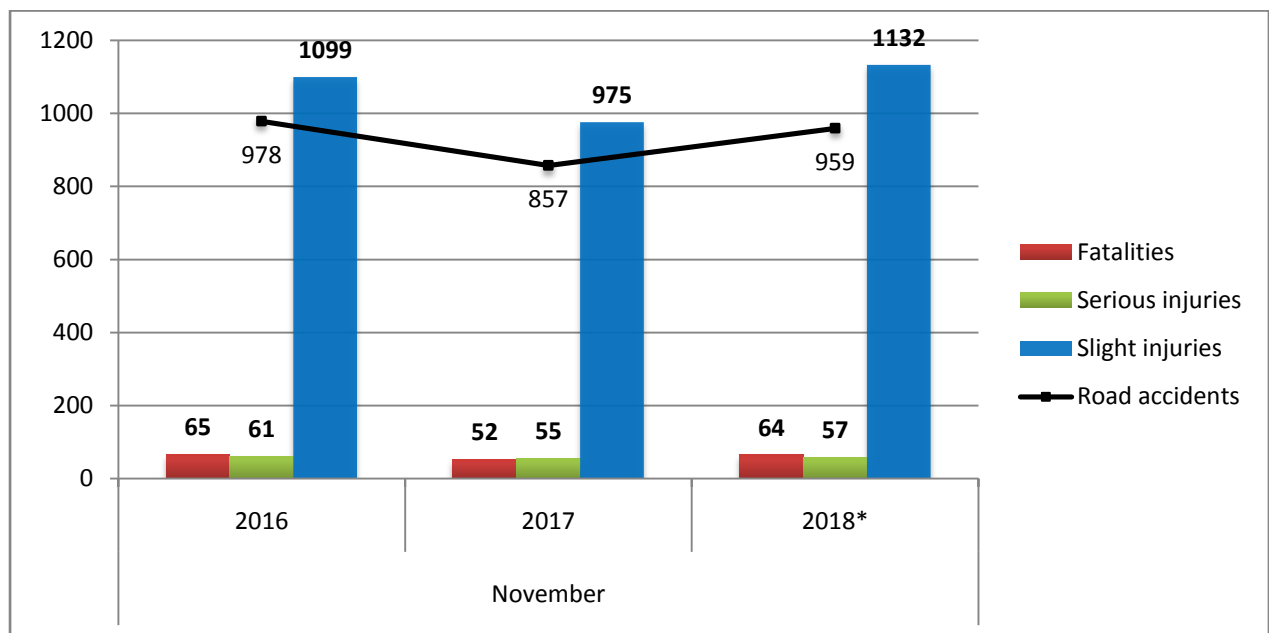
¹ Data for the reference year are provisional until the finalisation of the annual data, which become final 10 months after the end of the reference year. During these 10 months the provisional data are updated on the basis of the data of the Road Accident Forms which are transmitted to ELSTAT by Police Authorities.

Table 1: Road traffic accidents and casualties, November 2016-2018*

	November				
	2016	2017	2017/2016 (%)	2018*	2018*/2017 (%)
Road accidents	978	857	-12.4%	959	11.9%
Fatalities	65	52	-20.0%	64	23.1%
Total injuries	1,160	1,030	-11.2%	1,189	15.4%
Serious injuries	61	55	-9.8%	57	3.6%
Slight injuries	1,099	975	-11.3%	1,132	16.1%

* Provisional data

Graph 2: Road traffic accidents and casualties, November 2016-2018*



* Provisional data

Table 2: Road traffic accidents and casualties, by region and department, November 2017 – 2018*

Region and Department	Road accidents			Fatalities			Serious injuries			Slight injuries		
	2017	2018*	%	2017	2018*	%	2017	2018*	%	2017	2018*	%
Greece Total	857	959	11.9%	52	64	23.1%	55	57	3.6%	975	1,132	16.1%
Anatoliki Macedonia, Thraki (East Macedonia and Thrace)	18	26	44.4%	1	6	500.0%	3	7	133.3%	21	39	85.7%
Drama	2	4	100.0%	0	1		0	0		2	8	
Evros	7	5	-28.6%	1	1		2	1		8	4	
Kavala	2	11	450.0%	0	2		0	5		2	17	
Xanthi	3	3	0.0%	0	2		0	1		3	6	
Rodopi	4	3	-25.0%	0	0		1	0		6	4	
Kentriki Macedonia (Central Macedonia)	160	172	7.5%	9	9	0.0%	9	7	-22.2%	181	260	43.6%
Imathia	3	2	-33.3%	1	0		0	0		3	2	
Thessaloniki	134	144	7.5%	3	6		5	3		156	216	
Kilkis	4	6	50.0%	0	1		0	1		5	16	
Pella	5	5	0.0%	0	0		2	1		4	9	
Pieria	3	3	0.0%	2	1		0	0		3	2	
Serres	2	7	250.0%	0	1		2	1		1	10	
Chalkidiki	9	5	-44.4%	3	0		0	1		9	5	
Dytiki Macedonia (West Macedonia)	4	5	25.0%	0	0	-	0	1	-	7	9	28.6%
Grevena	0	1	-	0	0		0	0		0	4	
Kastoria	0	1	-	0	0		0	1		0	0	
Kozani	4	2	-50.0%	0	0		0	0		7	4	
Florina	0	1	-	0	0		0	0		0	1	
Ipeiros (Epirus)	6	7	16.7%	2	1	-50.0%	1	1	0.0%	3	9	200.0%
Arta	1	0	-100.0%	1	0		0	0		0	0	
Thesprotia	3	3	0.0%	1	1		1	0		1	5	
Ioannina	2	2	0.0%	0	0		0	1		2	2	
Preveza	0	2	-	0	0		0	0		0	2	
Thessalia (Thessaly)	20	12	-40.0%	4	1	-75.0%	2	2	0.0%	31	18	-41.9%
Karditsa	3	3	0.0%	0	0		0	0		7	4	
Larissa	9	5	-44.4%	1	0		1	1		15	11	
Magnissia	3	4	33.3%	1	1		0	1		2	3	
Trikala	5	0	-100.0%	2	0		1	0		7	0	
Ionia Nisia (Ionian Islands)	8	6	-25.0%	2	0	-100.0%	2	0	-100.0%	7	8	14.3%
Zakynthos	2	1	-50.0%	2	0		1	0		1	1	
Kerkyra	3	4	33.3%	0	0		0	0		3	6	
Kefallinia	2	0	-100.0%	0	0		0	0		3	0	
Lefkada	1	1	0.0%	0	0		1	0		0	1	

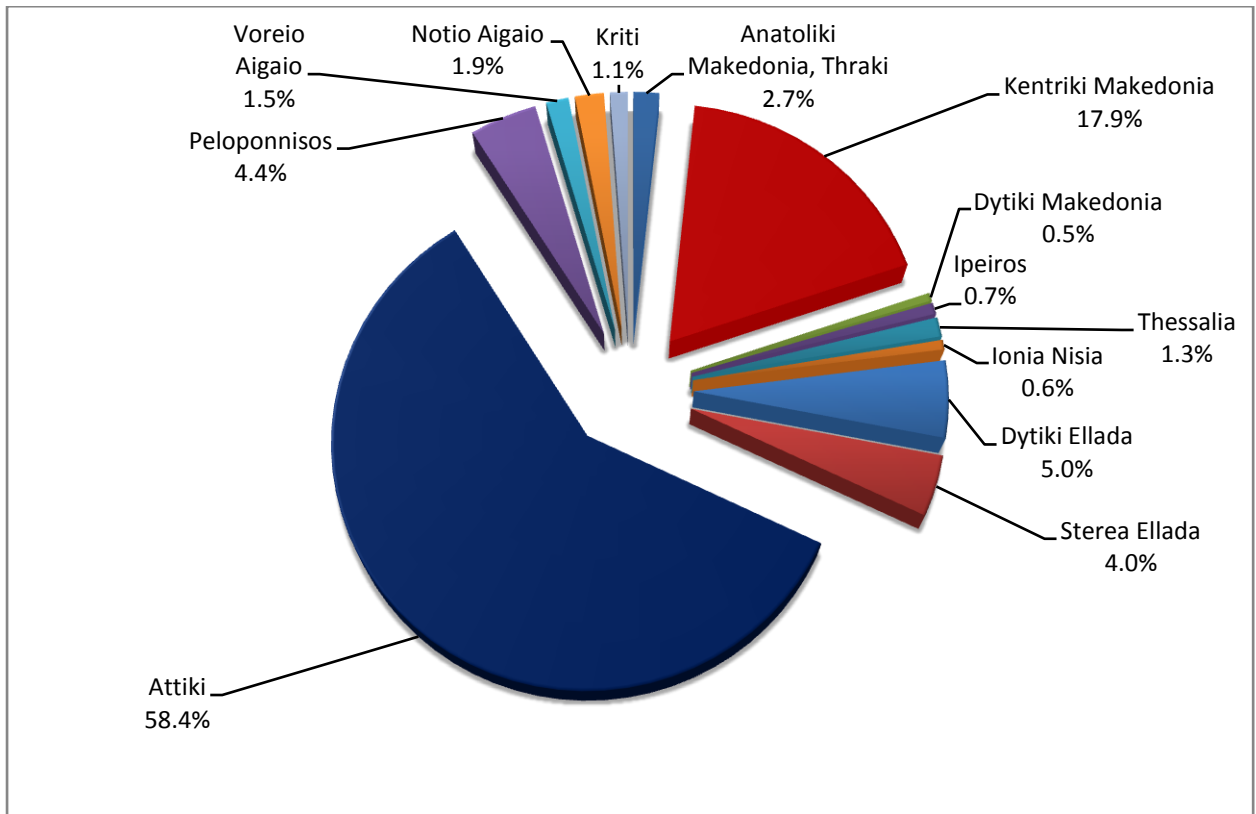
* Provisional data

Table 2: Road traffic accidents and casualties, by region and department, November 2017 – 2018* (Continued)

Region and Department	Road accidents			Fatalities			Serious injuries			Slight injuries		
	2017	2018*	%	2017	2018*	%	2017	2018*	%	2017	2018*	%
Dytiki Ellada (West Greece)	30	48	60.0%	4	5	25.0%	5	6	20.0%	25	50	100.0%
Etolia & Akarnania	7	18	157.1%	1	1		1	1		6	20	
Achaia	17	21	23.5%	2	1		1	3		17	24	
Ilia	6	9	50.0%	1	3		3	2		2	6	
Stereia Ellada	35	38	8.6%	8	5	-37.5%	5	3	-40.0%	36	35	-2.8%
Viotia	8	9	12.5%	3	0		0	0		9	9	
Evia	16	12	-25.0%	4	1		1	3		12	9	
Evrytania	1	0	-100.0%	0	0		0	0		1	0	
Fthiotida	7	16	128.6%	1	4		1	0		8	16	
Fokida	3	1	-66.7%	0	0		3	0		6	1	
Attiki (Attica)	506	560	10.7%	9	21	133.3%	18	16	-11.1%	591	630	6.6%
Peloponnisos (Peloponnese)	34	42	23.5%	6	8	33.3%	3	7	133.3%	37	42	13.5%
Argolida	3	5	66.7%	1	0		0	3		2	2	
Arkadia	2	3	50.0%	1	0		1	0		0	4	
Korinthia	15	17	13.3%	0	2		1	3		18	20	
Lakonia	6	8	33.3%	4	2		0	1		8	8	
Messinia	8	9	12.5%	0	4		1	0		9	8	
Voreio Aigaio (North Aegean)	14	14	0.0%	2	0	-100.0%	2	2	0.0%	16	13	-18.8%
Lesvos	6	8	33.3%	2	0		2	2		7	7	
Samos	6	3	-50.0%	0	0		0	0		7	3	
Chios	2	3	50.0%	0	0		0	0		2	3	
Notio Aigaio (South Aegean)	14	18	28.6%	2	3	50.0%	2	3	50.0%	14	15	7.1%
Dodekanissos	7	11	57.1%	1	1		1	2		9	10	
Kyklades	7	7	0.0%	1	2		1	1		5	5	
Kriti (Crete)	8	11	37.5%	3	5	66.7%	3	2	-33.3%	6	4	-33.3%
Iraklio	5	10	100.0%	3	4		3	2		2	4	
Lassithi	0	0	-	0	0		0	0		0	0	
Rethymno	1	0	-100.0%	0	0		0	0		1	0	
Chania	2	1	-50.0%	0	1		0	0		3	0	

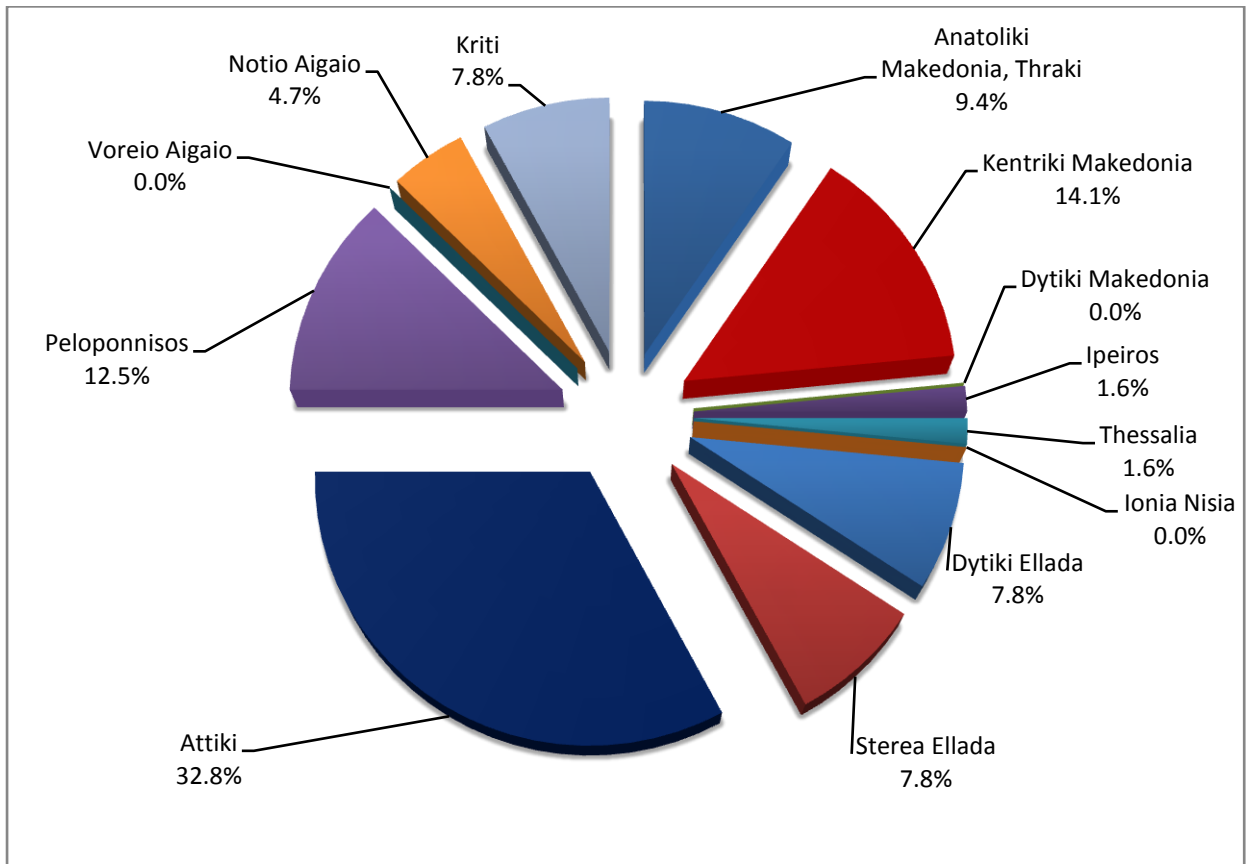
* Provisional data

Graph 3: Road traffic accidents by region, November 2018 *



* Provisional data

Graph 4: Fatalities by region, November 2018 *



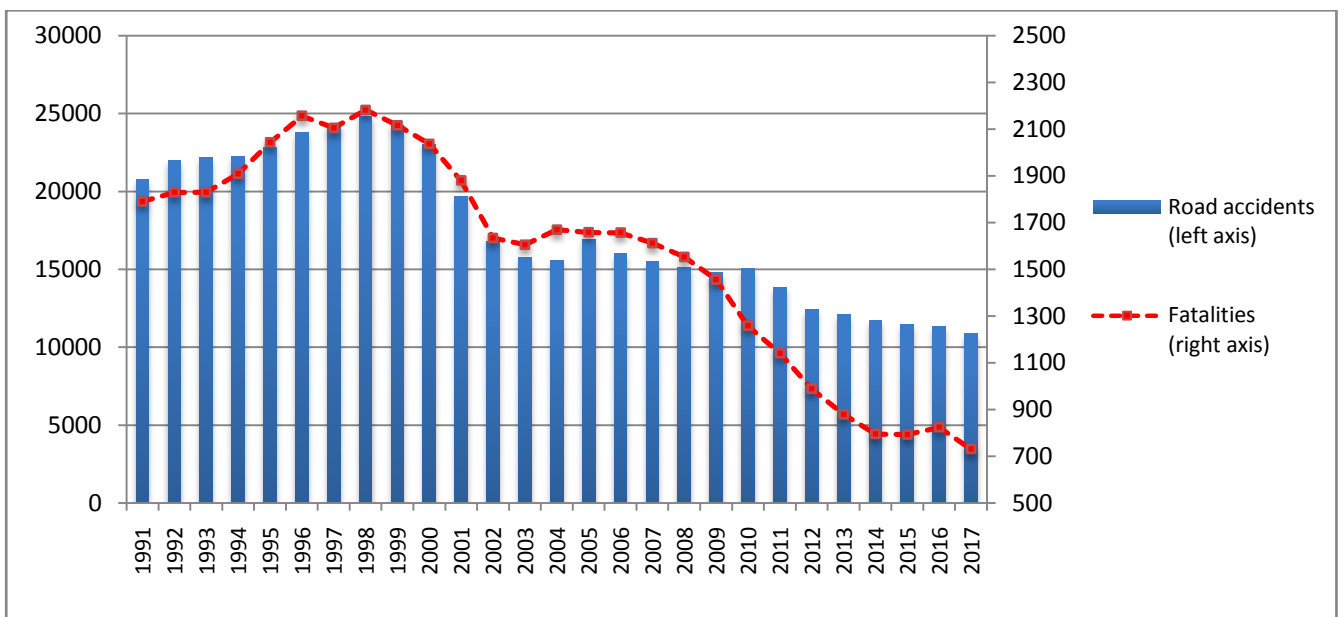
* Provisional data

Table 3: Road traffic accidents and casualties for the period January - November 2016, 2017 and 2018*

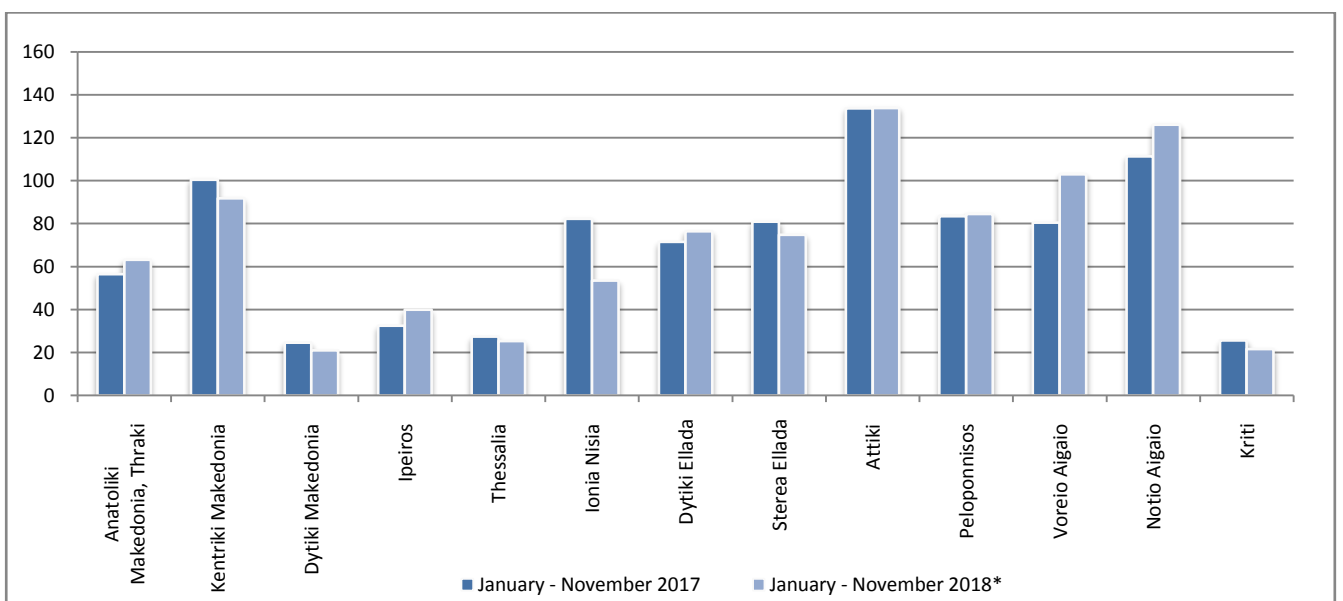
	2016		2017		2018 *
	January - November	Total year	January - November	Total year	January - November
Road Accidents	10,436	11,318	9,933	10,848	9,833
<i>Annual Change (%)</i>			-4.8%	-4.2%	-1.0%
Fatalities	766	824	666	731	625
<i>Annual Change (%)</i>			-13.1%	-11.3%	-6.2%
Serious injuries	826	879	664	706	683
<i>Annual Change (%)</i>			-19.6%	-19.7%	2.9%
Slight injuries	11,930	12,946	11,511	12,565	11,182
<i>Annual Change (%)</i>			-3.5%	-2.9%	-2.9%

* Provisional data

Graph 5: Total road traffic accidents and fatalities, 1991-2017

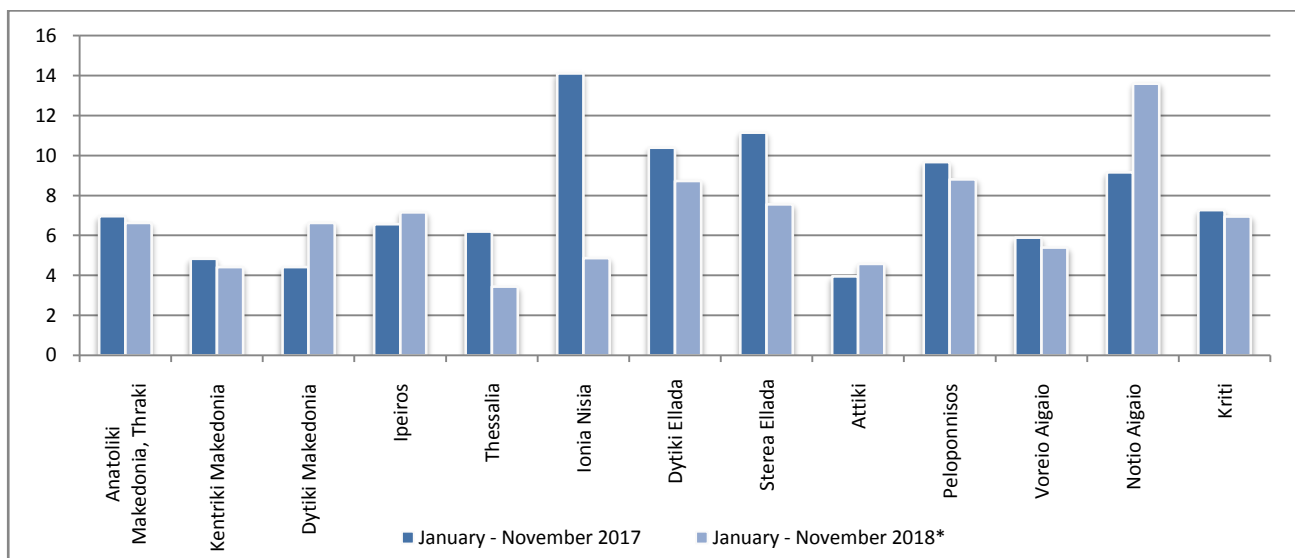


Graph 6: Road accidents per 100,000 inhabitants

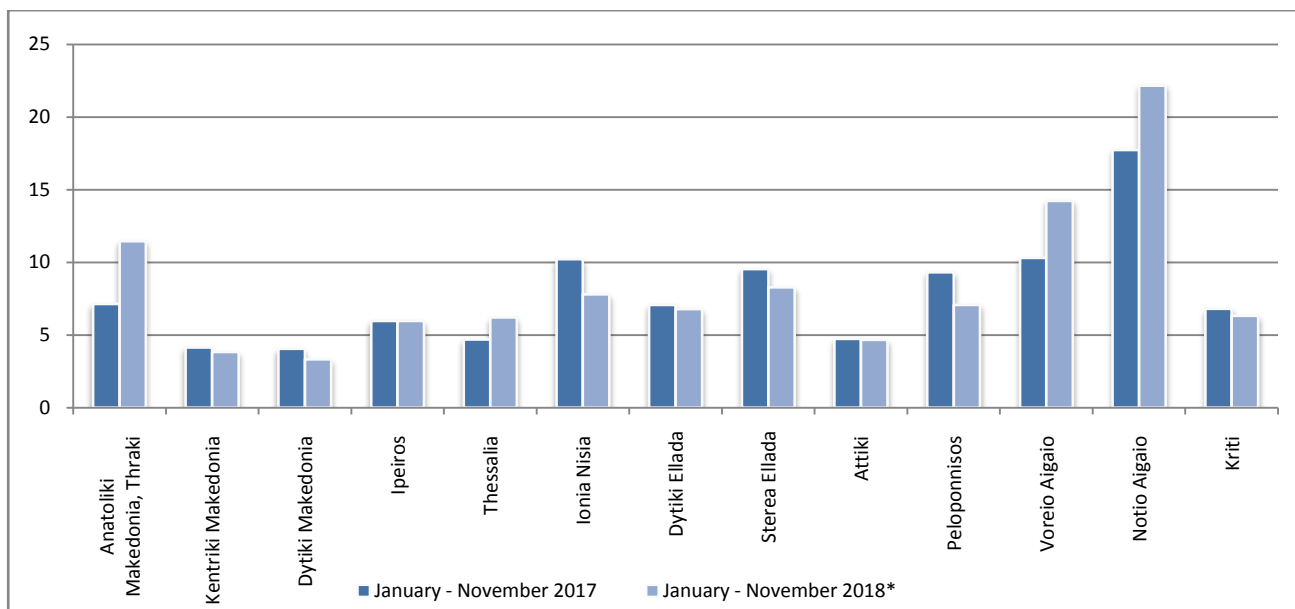


* Provisional data

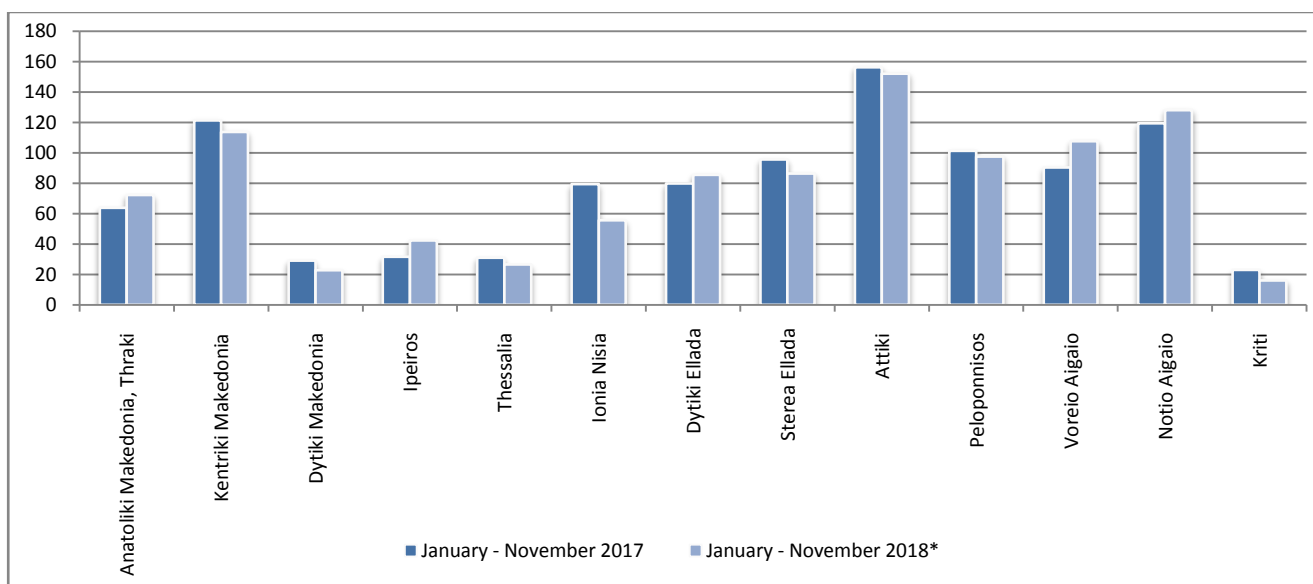
Graph 7: Fatalities per 100,000 inhabitants



Graph 8: Serious injuries per 100,000 inhabitants



Graph 9: Slight injuries per 100,000 inhabitants



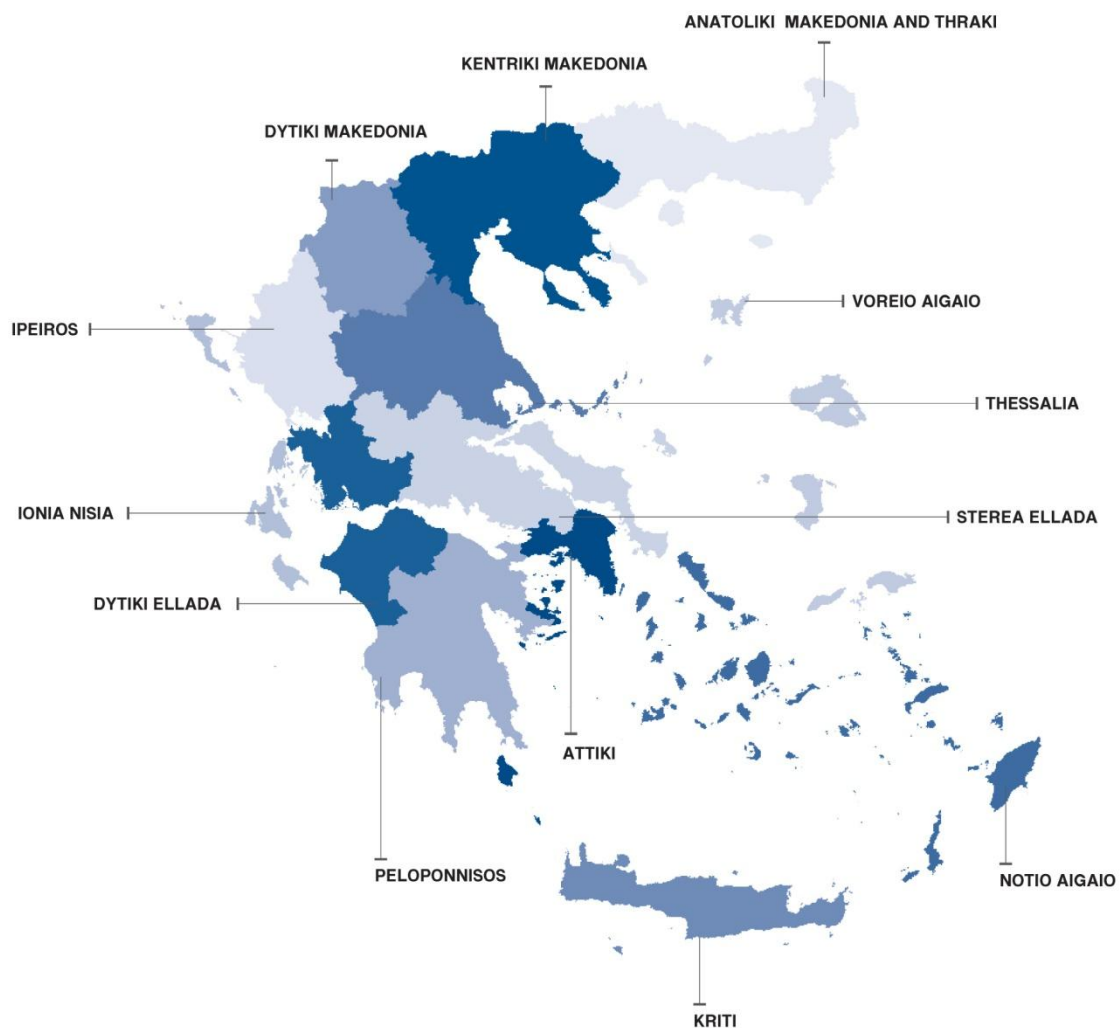
* Provisional data

Explanatory Notes

Survey on Road Accidents The survey on road accidents is conducted on a monthly basis and it records, for each department of Greece and for each month separately, the number of accidents resulting in death or injury, as well as the number of persons injured by categories (drivers, passengers, pedestrians).

On a yearly basis, road accidents are further analyzed. The competent agencies for filling in/collecting the forms on road accidents are the local Police Authorities and the local Port Authorities of Greece.

The lower level of analysis for the place where an injury road accident occurred is the Municipal – Local Commune, which is described by a 8-digit geographic code. Data are collected on a monthly basis. The main variables are the following: place of accident, kind of road, casualties, conditions of road surface and type of road.



Legal basis The Survey on Road Traffic Accidents is governed by Council Decision 93/704 of the European Community.

Reference Period Monthly.

Availability of Data Provisional data are available 2 months after the reference month.
Final data are available 10 months after the reference year.

National Definitions **Road accident** (injury accident): Any accident involving at least one road motor vehicle in motion on a public road or square to which the public has access (excluding yards, industrial sites or vehicle depot of public transport enterprises), resulting in at least one injured or killed person. Accidents with only material damages are not included.

Fatality (Death): Any person killed immediately or dying within 30 days as a result of an injury accident (This national definition applies since 01.01.1996)

Person injured: Any person who sustained an injury as result of an injury accident, and who normally needs medical treatment.

Serious injury: Any person who sustained an injury as result of an injury accident, such as brain damages, mutilation, multiple injuries, which may result in lack of awareness or which are life-threatening.

Slight injury: Any person injured who sustained minor and not life-threatening injuries.

Vehicle: Include motor vehicles, trolleybuses, motorcycles, bicycles, motorbikes, agricultural and road making machines, animal and hand-drawn vehicles. Railway vehicles are excluded, unless the road accident involves at least one of the aforementioned types of vehicles and therefore, railway vehicles are considered vehicles.

Methodology The forms of the survey are filled in by the local Police Authorities and the local Port Authorities as well.

References More information about road accidents is available on ELSTAT's website and more specifically at the link: www.statistics.gr > Population & Social Conditions > Accidents > Road Traffic Accidents. It should be noted that previous press releases and time series are available on ELSTAT's website: www.statistics.gr