

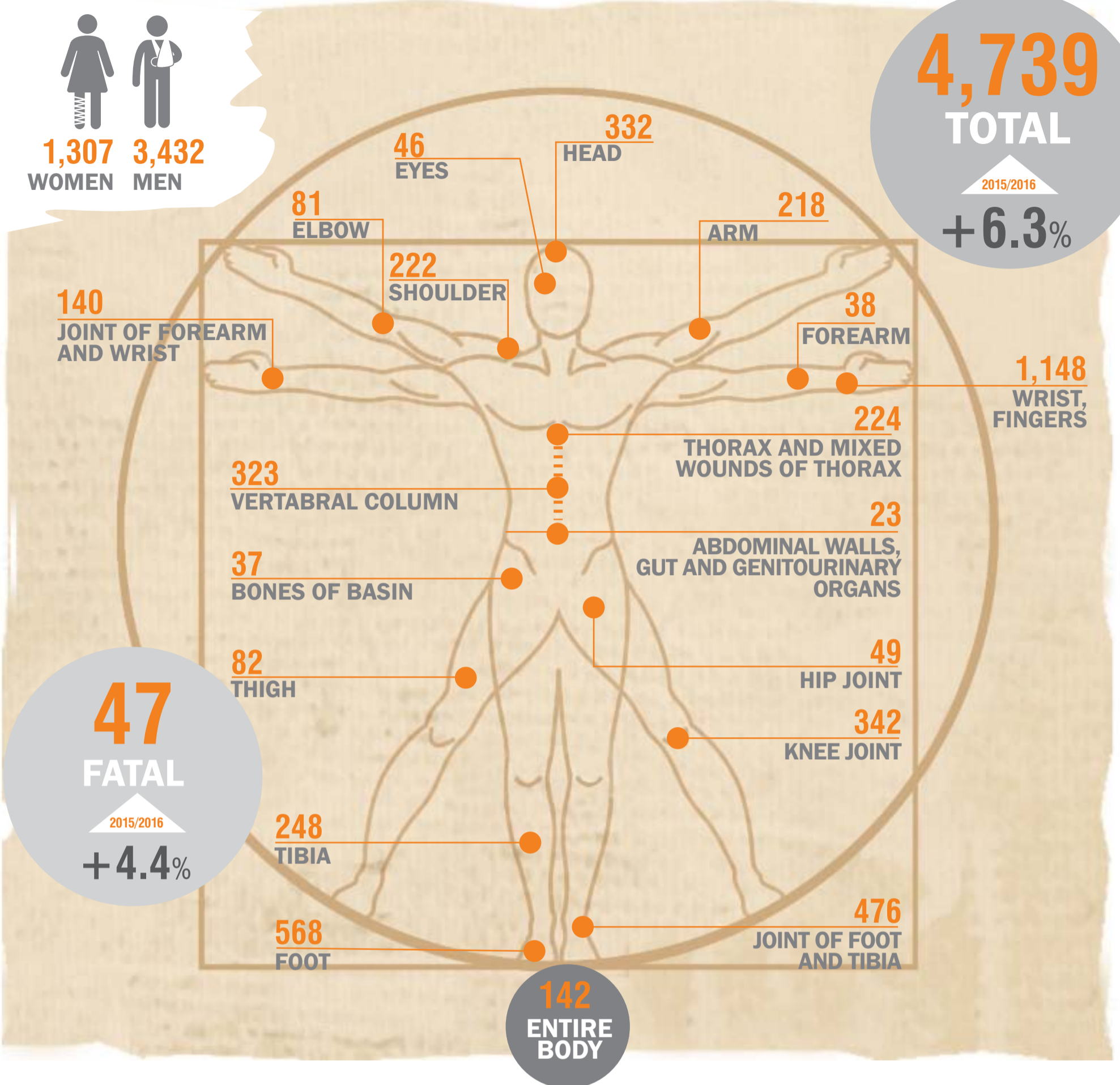


ACCIDENTS AT WORK, 2016

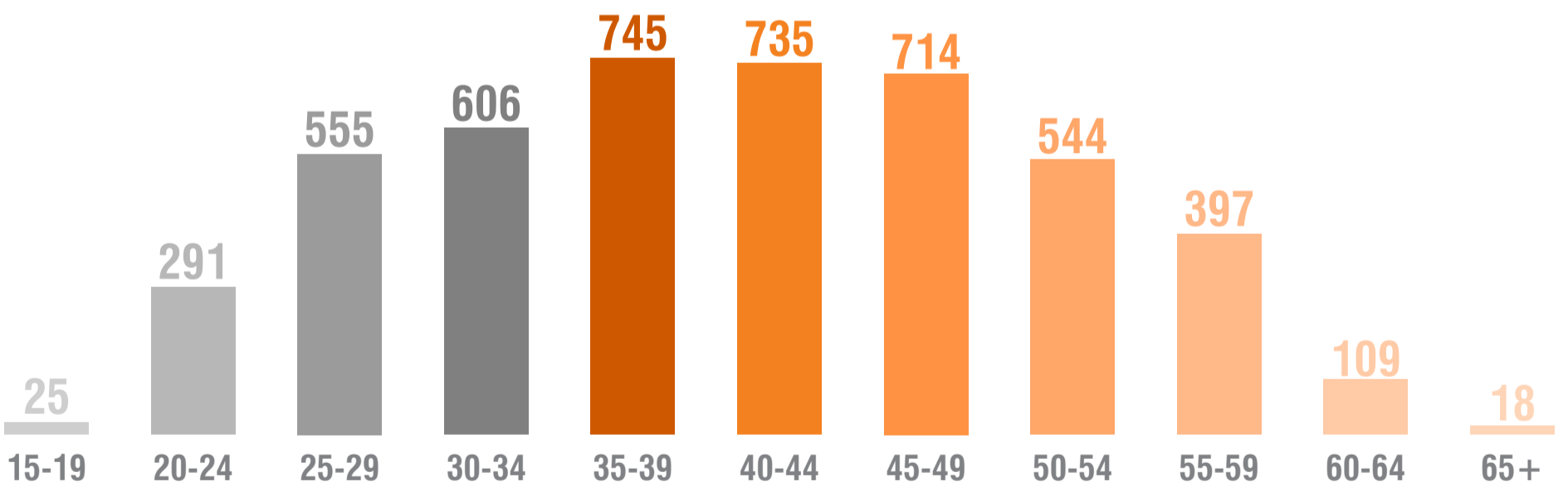


1,307 **3,432**
WOMEN **MEN**

4,739
TOTAL
2015/2016
+6.3%



47
FATAL
2015/2016
+4.4%

ACCIDENTS BY AGE GROUP



THE MOST DANGEROUS OCCUPATIONS

1,219

ELEMENTARY OCCUPATIONS

1,083

PLANT AND MACHINE OPERATORS

ACCIDENTS BY CONTACT - MODE OF INJURY

1,778

IMPACT WITH OR AGAINST A STATIONARY OBJECT (the victim is in motion)

1,027

STRUCK BY OBJECT IN MOTION