



PRESS RELEASE

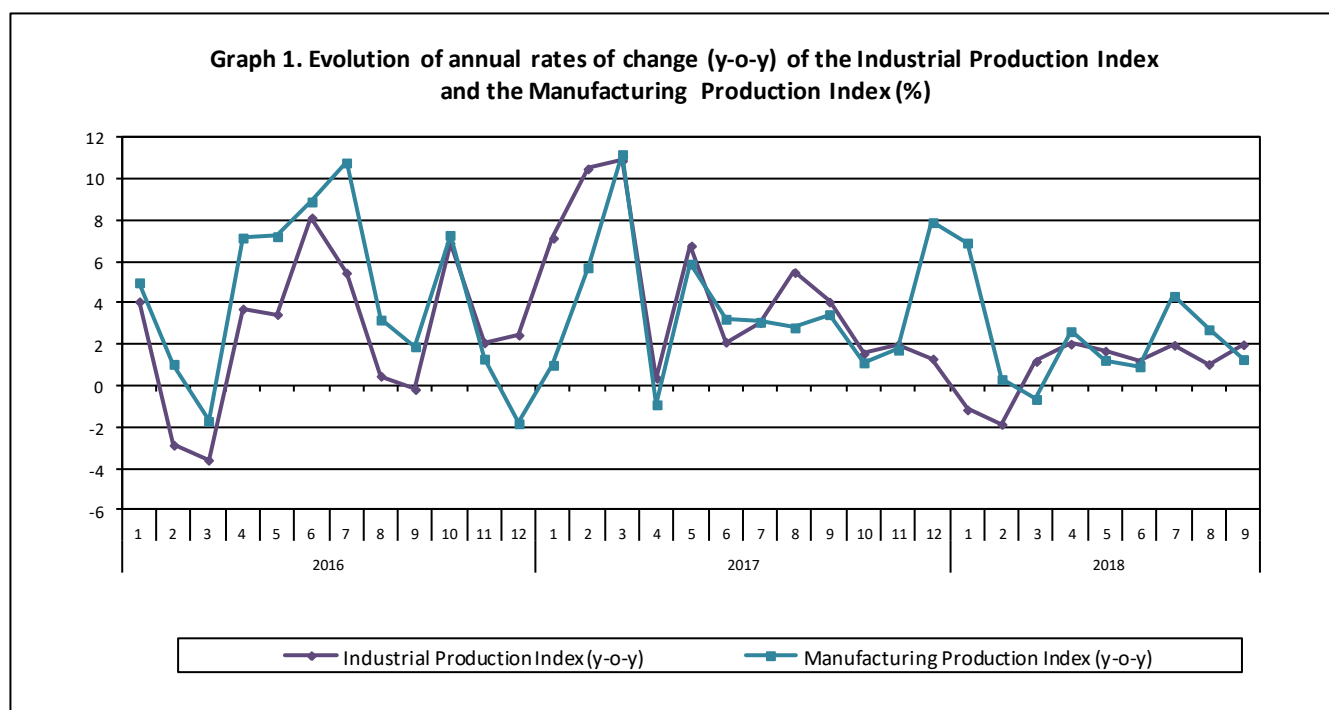
INDUSTRIAL PRODUCTION INDEX: September 2018, y-o-y increase of 2.0%

The evolution of the Industrial Production Index (IPI) with base year 2010=100.0 in September 2018, on the basis of provisional and working day adjusted data, is as follows:

The Overall Industrial Production Index in September 2018 recorded an increase of 2.0% compared with September 2017. The corresponding annual rate of change of the Overall IPI in September 2017 was 4.1% (Table 1).

The average Overall Industrial Production Index for the period from January to September 2018 recorded an increase of 0.9% compared with the average IPI of the period from January to September 2017 (Table 2).

The seasonally adjusted Overall Industrial Production Index in September 2018 recorded a decrease of 0.9% compared with August 2018 (Table 4).



Information:

Economic and Short-Term Indices Division
Production Indices Section

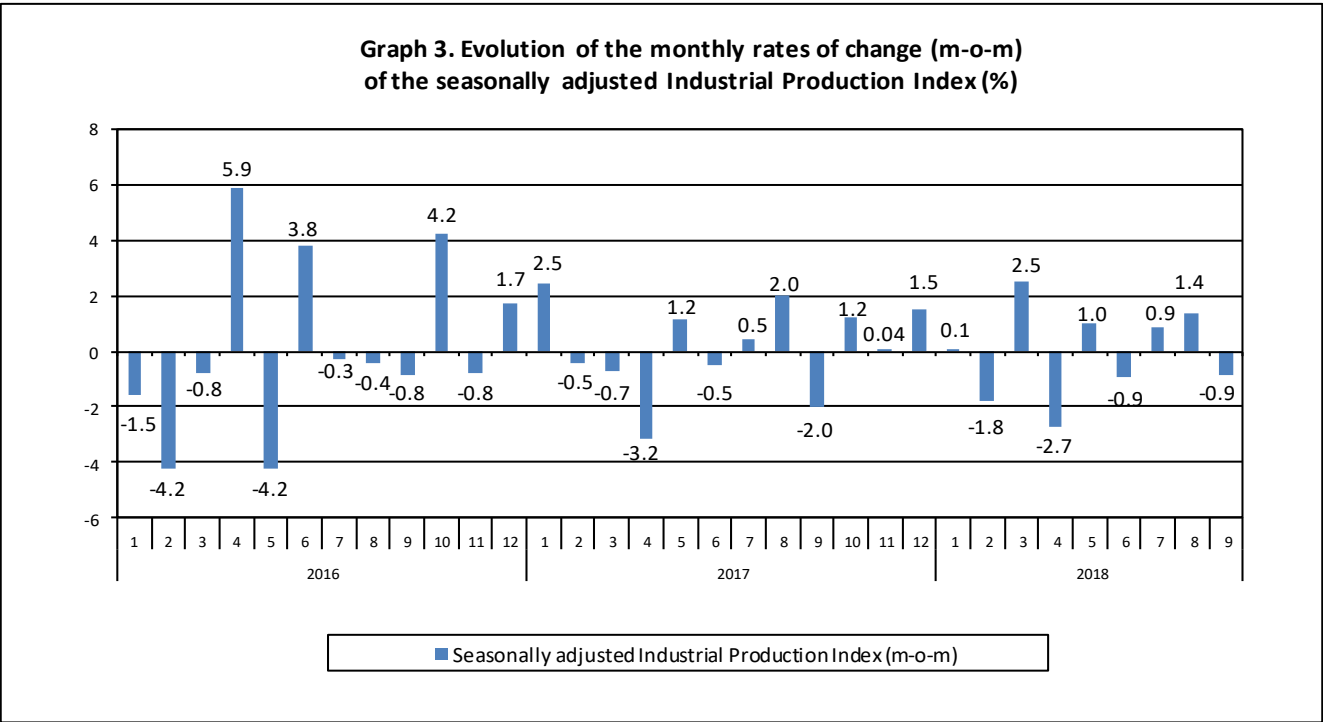
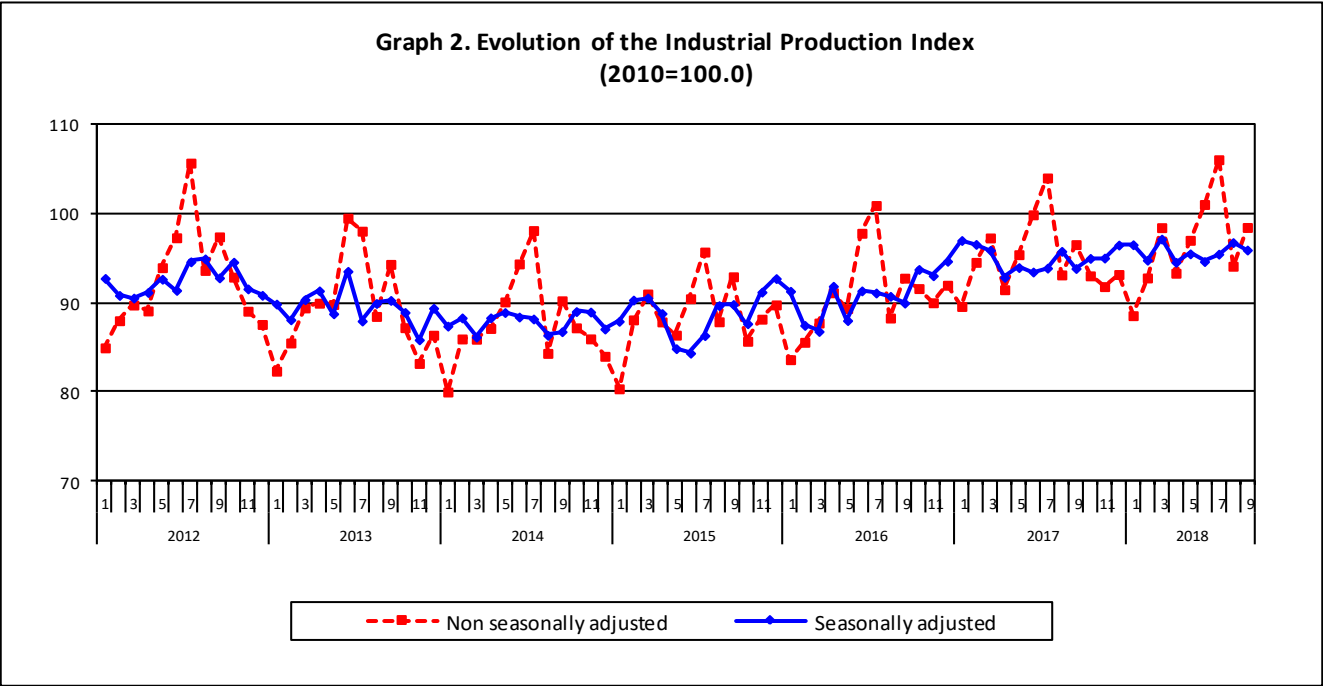
Diamantaki Aikaterini, Thymoglou Georgia

Tel: +30 213 135 2122, +30 213 135 2737

Fax: +30 213 135 2738

E-mail: a.diamantaki@statistics.gr, g.thymoglou@statistics.gr

The following graphs depict the evolution of the seasonally and non-seasonally adjusted Overall Industrial Production Index, as well as the monthly rates of change (m-o-m) of the seasonally adjusted index.



It should be noted that the time series with the seasonally adjusted indices is recalculated every time a new observation is added in the time series. Therefore, the seasonally adjusted data differ from the data published in the previous Press Release.

Evolution of the Industrial Production Index in September 2018

I. Annual changes: September 2018/ September 2017 (Table 1)

The 2.0% increase of the working day adjusted Overall IPI in September 2018, compared with the corresponding index in September 2017, is due to the annual changes of the sub-indices in the following industrial sections:

1. Increase of:

- 1.3% in the Manufacturing Production Index. The increase was the result of the annual changes of the sub-indices in the following 2-digit divisions: leather and related products, wood and cork, computers, electronic and optical products, furniture, repair and installation services of machinery and equipment.
- 10.7% in the Electricity Production Index.

2. Decrease of:

- 14.7% in the Mining and Quarrying Production Index. The decrease was the result of the annual changes of the sub-indices in the following 2-digit divisions: mining of coal and lignite, mining of metal ores.
- 2.2% in the Water Supply Production Index.

II. Rates of change of the average index in the period January – September 2018 compared with the corresponding index of the period January – September 2017 (Table 2)

The 0.9% increase of the working day adjusted Overall IPI in the 9-month period January – September 2018, compared with the corresponding index in January – September 2017, is due to the corresponding rates of change of the sub-indices in the following industrial sections:

1. Increase of:

- 2.1% in the Manufacturing Production Index.

2. Decrease of:

- 0.1% in the Mining and Quarrying Production Index.
- 2.3% in the Electricity Production Index.
- 2.4% in the Water Supply Production Index.

III. Monthly changes: September 2018/ August 2018 (Table 4)

The 0.9% decrease of the seasonally adjusted Overall IPI in September 2018, compared with the corresponding index in August 2018, is due to the monthly changes of the sub-indices in the following industrial sections:

1. Decrease of:

- 11.7% in the Mining and Quarrying Production Index.
- 2.4% in the Manufacturing Production Index.

2. Increase of:

- 3.3% in the Electricity Production Index.
- 2.9% in the Water Supply Production Index.

The following graph depicts the evolution of the Industrial Production Index and the Industrial Sections Indices.

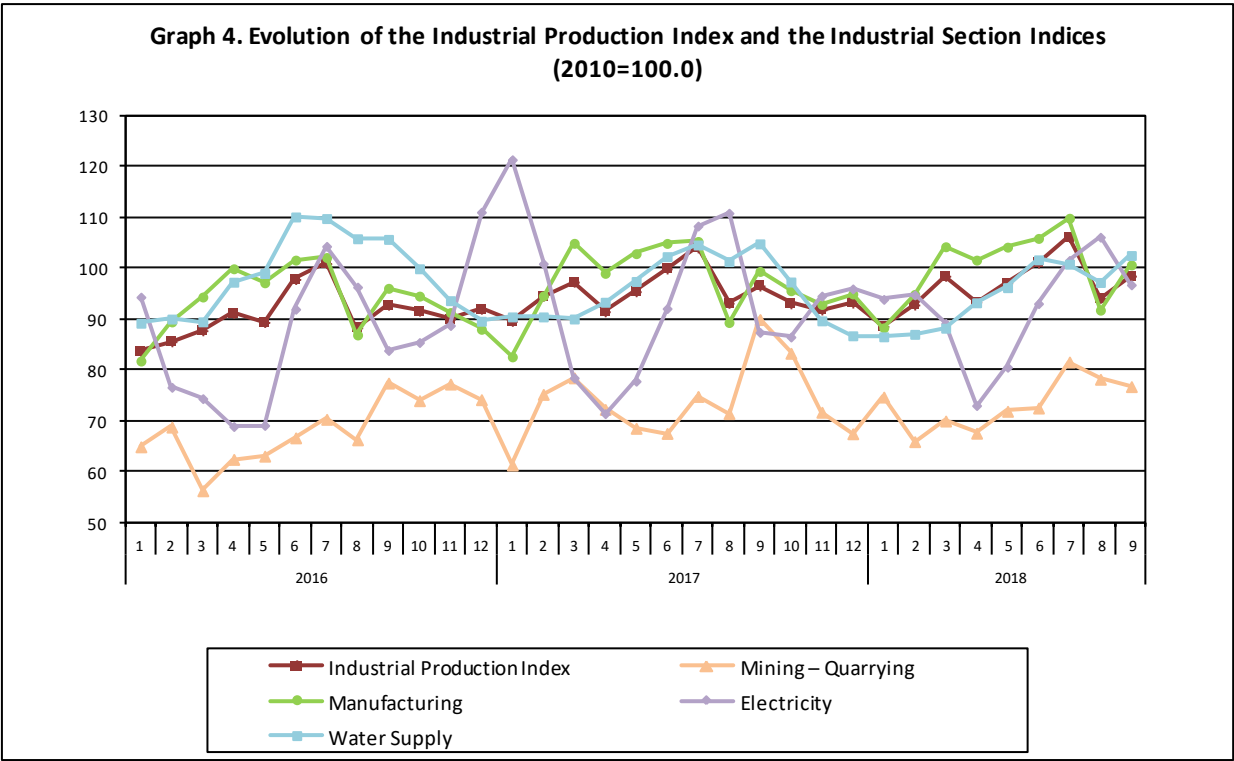


Table 1. Annual rates of change of the Industrial Production Index*(Working day adjusted data, according to the real number of working days)***Base year: 2010=100.0**

Code		Division	September			Rate of change (%)	
			2018*	2017	2016	2018/2017	2017/2016
OVERALL INDEX			98.47	96.54	92.77	2.0	4.1
B	MINING AND QUARRYING		76.73	89.93	77.42	-14.7	16.2
05	Mining of coal and lignite		63.60	82.18	59.83	-22.6	37.4
06	Extraction of crude petroleum and natural gas		165.55	77.39	158.05	113.9	-51.0
07	Mining of metal ores		84.40	102.84	91.22	-17.9	12.7
08	Other mining and quarrying products		94.37	103.40	103.42	-8.7	-0.02
C	MANUFACTURING		100.66	99.39	96.07	1.3	3.5
10	Food		96.16	99.23	96.10	-3.1	3.3
11	Beverages		88.10	86.02	75.01	2.4	14.7
12	Tobacco products		85.55	93.94	111.46	-8.9	-15.7
13	Textiles		62.45	67.48	72.24	-7.5	-6.6
14	Wearing apparel		45.14	42.88	48.48	5.3	-11.5
15	Leather and related products		64.14	57.61	63.94	11.3	-9.9
16	Wood and cork		54.58	46.33	46.42	17.8	-0.2
17	Paper and paper products		96.54	104.18	102.06	-7.3	2.1
18	Printing and recording services		46.20	43.28	48.71	6.7	-11.1
19	Coke and refined petroleum products		139.23	132.99	141.12	4.7	-5.8
20	Chemicals and chemical products		115.82	112.88	109.00	2.6	3.6
21	Basic pharmaceutical products and pharmaceutical preparations		139.00	130.64	109.99	6.4	18.8
22	Rubber and plastic products		95.20	91.91	98.56	3.6	-6.7
23	Other non-metallic mineral products		63.85	62.54	67.96	2.1	-8.0
24	Basic metals		161.46	155.27	106.10	4.0	46.3
25	Fabricated metal products		88.18	83.54	86.47	5.6	-3.4
26	Computers, electronic and optical products		155.92	104.16	107.42	49.7	-3.0
27	Electrical equipment		46.41	75.63	77.50	-38.6	-2.4
28	Machinery and equipment n. e. c.		90.38	105.23	99.40	-14.1	5.9
29	Motor vehicles, trailers and semi-trailers		64.16	70.19	90.42	-8.6	-22.4
30	Other transport equipment		68.44	68.37	86.60	0.1	-21.1
31	Furniture		61.47	55.84	57.09	10.1	-2.2
32	Other manufactured goods		91.79	104.69	82.38	-12.3	27.1
33	Repair and installation services of machinery and equipment		60.11	53.39	54.96	12.6	-2.9
D	ELECTRICITY		96.74	87.39	83.84	10.7	4.2
35	Production and distribution of electricity		96.74	87.39	83.84	10.7	4.2
E	WATER SUPPLY		102.52	104.81	105.69	-2.2	-0.8
36	Treatment and supply services of natural water		102.52	104.81	105.69	-2.2	-0.8
MAIN INDUSTRIAL GROUPINGS							
1	Energy		105.98	100.91	99.53	5.0	1.4
2	Intermediate goods		98.01	98.69	90.90	-0.7	8.6
3	Capital goods		76.82	70.80	74.53	8.5	-5.0
4	Consumer Durables		52.33	58.98	60.00	-11.3	-1.7
5	Consumer Non-Durables		96.02	96.41	91.13	-0.4	5.8

* Provisional data

Note: The indices are rounded up to two decimal figures when published and percentage changes up to one decimal figure when published.

Table 2. Average indices of the period January – September and rates of change (%) of the Industrial Production Index
(Working day adjusted data, according to the real number of working days)

Base year: 2010=100.0

Code		Division	Average indices of the period Jan.-Sep.			Rate of change (%)	
			2018*	2017	2016	2018/2017	2017/2016
OVERALL INDEX			96.65	95.77	90.80	0.9	5.5
B	MINING AND QUARRYING		73.22	73.27	66.22	-0.1	10.6
05	Mining of coal and lignite		65.04	65.98	51.86	-1.4	27.2
06	Extraction of crude petroleum and natural gas		159.80	106.05	138.08	50.7	-23.2
07	Mining of metal ores		83.45	82.32	83.47	1.4	-1.4
08	Other mining and quarrying products		79.04	82.79	84.52	-4.5	-2.1
C	MANUFACTURING		100.15	98.10	94.37	2.1	3.9
10	Food		98.49	98.85	97.41	-0.4	1.5
11	Beverages		96.98	91.34	97.52	6.2	-6.3
12	Tobacco products		66.16	99.45	120.03	-33.5	-17.1
13	Textiles		61.26	64.07	65.93	-4.4	-2.8
14	Wearing apparel		46.08	44.78	49.64	2.9	-9.8
15	Leather and related products		47.03	48.67	50.23	-3.4	-3.1
16	Wood and cork		42.63	41.17	40.99	3.5	0.4
17	Paper and paper products		101.36	99.22	98.53	2.2	0.7
18	Printing and recording services		45.56	45.99	52.59	-0.9	-12.6
19	Coke and refined petroleum products		137.42	133.22	127.13	3.2	4.8
20	Chemicals and chemical products		110.84	106.29	105.28	4.3	1.0
21	Basic pharmaceutical products and pharmaceutical preparations		145.43	124.51	108.56	16.8	14.7
22	Rubber and plastic products		93.82	93.01	92.09	0.9	1.0
23	Other non-metallic mineral products		63.34	62.19	63.11	1.9	-1.5
24	Basic metals		147.98	145.00	112.08	2.1	29.4
25	Fabricated metal products		88.64	87.46	82.11	1.4	6.5
26	Computers, electronic and optical products		117.70	104.55	95.13	12.6	9.9
27	Electrical equipment		62.36	72.92	71.63	-14.5	1.8
28	Machinery and equipment n. e. c.		98.91	96.18	94.35	2.8	1.9
29	Motor vehicles, trailers and semi-trailers		80.17	86.88	56.27	-7.7	54.4
30	Other transport equipment		55.77	59.04	75.84	-5.5	-22.2
31	Furniture		57.33	48.77	50.76	17.6	-3.9
32	Other manufactured goods		90.86	91.37	89.22	-0.6	2.4
33	Repair and installation services of machinery and equipment		53.05	52.99	47.92	0.1	10.6
D	ELECTRICITY		92.09	94.28	84.41	-2.3	11.7
35	Production and distribution of electricity		92.09	94.28	84.41	-2.3	11.7
E	WATER SUPPLY		94.82	97.19	99.59	-2.4	-2.4
36	Treatment and supply services of natural water		94.82	97.19	99.59	-2.4	-2.4
MAIN INDUSTRIAL GROUPINGS							
1	Energy		102.37	102.50	94.61	-0.1	8.3
2	Intermediate goods		94.60	93.95	87.61	0.7	7.2
3	Capital goods		71.27	69.18	64.68	3.0	7.0
4	Consumer Durables		55.89	55.49	54.88	0.7	1.1
5	Consumer Non-Durables		98.70	96.42	96.47	2.4	-0.1

* Provisional data

Note: The indices are rounded up to two decimal figures when published and percentage changes up to one decimal figure when published.

Table 3. Monthly rate of change of the Industrial Production Index*(Working day adjusted data, according to the real number of working days)*

Base year: 2010=100.0

Code	Division	September 2018*	August 2018**	Rate of change (%) Sep. 2018 / Aug. 2018
OVERALL INDEX		98.47	94.11	4.6
B	MINING AND QUARRYING	76.73	78.17	-1.8
05	Mining of coal and lignite	63.60	76.31	-16.7
06	Extraction of crude petroleum and natural gas	165.55	158.72	4.3
07	Mining of metal ores	84.40	74.01	14.0
08	Other mining and quarrying products	94.37	76.08	24.0
C	MANUFACTURING	100.66	91.77	9.7
10	Food	96.16	111.45	-13.7
11	Beverages	88.10	105.25	-16.3
12	Tobacco products	85.55	61.74	38.6
13	Textiles	62.45	27.64	125.9
14	Wearing apparel	45.14	34.03	32.6
15	Leather and related products	64.14	23.87	168.7
16	Wood and cork	54.58	33.68	62.1
17	Paper and paper products	96.54	93.16	3.6
18	Printing and recording services	46.20	34.94	32.2
19	Coke and refined petroleum products	139.23	143.24	-2.8
20	Chemicals and chemical products	115.82	84.53	37.0
21	Basic pharmaceutical products and pharmaceutical preparations	139.00	86.02	61.6
22	Rubber and plastic products	95.20	66.69	42.7
23	Other non-metallic mineral products	63.85	56.44	13.1
24	Basic metals	161.46	129.55	24.6
25	Fabricated metal products	88.18	60.80	45.0
26	Computers, electronic and optical products	155.92	87.20	78.8
27	Electrical equipment	46.41	35.92	29.2
28	Machinery and equipment n. e. c.	90.38	73.24	23.4
29	Motor vehicles, trailers and semi-trailers	64.16	78.25	-18.0
30	Other transport equipment	68.44	42.53	60.9
31	Furniture	61.47	39.40	56.0
32	Other manufactured goods	91.79	66.06	38.9
33	Repair and installation services of machinery and equipment	60.11	38.09	57.8
D	ELECTRICITY	96.74	106.12	-8.8
35	Production and distribution of electricity	96.74	106.12	-8.8
E	WATER SUPPLY	102.52	97.22	5.4
36	Treatment and supply services of natural water	102.52	97.22	5.4
MAIN INDUSTRIAL GROUPINGS				
1	Energy	105.98	112.73	-6.0
2	Intermediate goods	98.01	78.90	24.2
3	Capital goods	76.82	54.28	41.5
4	Consumer Durables	52.33	31.37	66.8
5	Consumer Non-Durables	96.02	95.03	1.0

* Provisional data **Revised data

Note: The indices are rounded up to two decimal figures when published and percentage changes up to one decimal figure when published.

Table 4. Monthly rate of change of the seasonally adjusted Industrial Production Index

Base year: 2010=100.0

Code	Division	September 2018	August 2018	Rate of change (%) Sep. 2018 / Aug. 2018
OVERALL INDEX		95.93	96.77	-0.9
B	MINING AND QUARRYING	68.75	77.89	-11.7
05	Mining of coal and lignite	53.66	69.78	-23.1
06	Extraction of crude petroleum and natural gas	174.69	153.24	14.0
07	Mining of metal ores	77.68	76.24	1.9
08	Other mining and quarrying products	77.85	82.39	-5.5
C	MANUFACTURING	97.30	99.66	-2.4
10	Food	93.61	92.98	0.7
11	Beverages	87.43	85.51	2.2
12	Tobacco products	82.13	70.58	16.4
13	Textiles	59.12	57.60	2.6
14	Wearing apparel	46.94	44.63	5.2
15	Leather and related products	48.66	48.43	0.5
16	Wood and cork	47.56	49.44	-3.8
17	Paper and paper products	96.81	105.88	-8.6
18	Printing and recording services	47.73	46.99	1.6
19	Coke and refined petroleum products	137.34	142.40	-3.6
20	Chemicals and chemical products	107.24	115.01	-6.8
21	Basic pharmaceutical products and pharmaceutical preparations	148.16	167.02	-11.3
22	Rubber and plastic products	92.26	91.70	0.6
23	Other non-metallic mineral products	59.64	63.37	-5.9
24	Basic metals	155.68	153.67	1.3
25	Fabricated metal products	86.93	83.78	3.8
26	Computers, electronic and optical products	148.63	119.98	23.9
27	Electrical equipment	45.88	54.67	-16.1
28	Machinery and equipment n. e. c.	95.75	105.96	-9.6
29	Motor vehicles, trailers and semi-trailers	63.20	138.98	-54.5
30	Other transport equipment	60.45	63.03	-4.1
31	Furniture	57.52	59.89	-4.0
32	Other manufactured goods	90.60	95.30	-4.9
33	Repair and installation services of machinery and equipment	62.35	61.11	2.0
D	ELECTRICITY	98.04	94.92	3.3
35	Production and distribution of electricity	98.04	94.92	3.3
E	WATER SUPPLY	93.85	91.20	2.9
36	Treatment and supply services of natural water	93.85	91.20	2.9
MAIN INDUSTRIAL GROUPINGS				
1	Energy	104.37	104.50	-0.1
2	Intermediate goods	92.97	96.87	-4.0
3	Capital goods	77.75	80.54	-3.5
4	Consumer Durables	51.18	52.68	-2.8
5	Consumer Non-Durables	93.69	92.14	1.7

Notes:

1. The indices are rounded up to two decimal figures when published and percentage changes up to one decimal figure when published.
2. The whole time-series with seasonally adjusted indices is recalculated every time a new observation is added in the time-series.

Table 5. Evolution of the Overall Industrial Production Index*(Working day adjusted data, according to the real number of working days)***Base year: 2010=100.0**

Year and month	Overall Index	Monthly rate of change (%)	Annual rate of change (%)	12-month average indices (moving average)	Rate of change of the 12-month average indices (%)
2016:					
1	83.61	-6.9	4.1	88.96	1.3
2	85.56	2.3	-2.9	88.75	0.9
3	87.73	2.5	-3.6	88.48	0.1
4	91.13	3.9	3.7	88.75	0.3
5	89.36	-1.9	3.5	89.00	1.0
6	97.82	9.5	8.1	89.61	2.0
7	100.94	3.2	5.5	90.05	2.8
8	88.29	-12.5	0.5	90.08	2.5
9	92.77	5.1	-0.2	90.07	2.2
10	91.60	-1.3	6.9	90.56	2.9
11	90.01	-1.7	2.1	90.72	2.8
12	91.98	2.2	2.5	90.90	2.5
Annual average	90.90	–	–	90.90	2.5
2017:					
1	89.59	-2.6	7.1	91.40	2.7
2	94.55	5.5	10.5	92.15	3.8
3	97.29	2.9	10.9	92.94	5.0
4	91.47	-6.0	0.4	92.97	4.8
5	95.41	4.3	6.8	93.48	5.0
6	99.89	4.7	2.1	93.65	4.5
7	104.03	4.1	3.1	93.91	4.3
8	93.14	-10.5	5.5	94.31	4.7
9	96.54	3.7	4.1	94.62	5.1
10	93.03	-3.6	1.6	94.74	4.6
11	91.82	-1.3	2.0	94.89	4.6
12	93.18	1.5	1.3	94.99	4.5
Annual average	94.99	–	–	94.99	4.5
2018:					
1	88.56	-5.0	-1.2	94.91	3.8
2	92.79	4.8	-1.9	94.76	2.8
3	98.45	6.1	1.2	94.86	2.1
4	93.33	-5.2	2.0	95.01	2.2
5	97.03	4.0	1.7	95.15	1.8
6	101.05	4.1	1.2	95.25	1.7
7	106.08	5.0	2.0	95.42	1.6
8**	94.11	-11.3	1.0	95.50	1.3
9*	98.47	4.6	2.0	95.66	1.1

* Provisional data

** Revised data

Note: The indices are rounded up to two decimal figures when published and percentage changes up to one decimal figure when published.

Table 6. Monthly evolution of the seasonally adjusted Overall Industrial Production Index and Main Industrial Groupings

Base year: 2010=100.0

Year and month	Overall Index		Energy		Intermediate goods		Capital goods		Consumer durables		Consumer non-durables	
	Index	Monthly rate of change (%)	Index	Monthly rate of change (%)	Index	Monthly rate of change (%)	Index	Monthly rate of change (%)	Index	Monthly rate of change (%)	Index	Monthly rate of change (%)
2016:	1	91.30 -1.5	98.75 -1.3		84.33 -2.5		63.70 -11.1		54.25 -21.4		95.80 1.5	
	2	87.47 -4.2	89.01 -9.9		86.13 2.1		65.44 2.7		51.13 -5.7		93.68 -2.2	
	3	86.78 -0.8	87.35 -1.9		85.80 -0.4		67.20 2.7		53.28 4.2		93.32 -0.4	
	4	91.86 5.9	94.98 8.7		89.03 3.8		69.31 3.1		57.83 8.5		97.24 4.2	
	5	88.00 -4.2	93.31 -1.8		83.29 -6.5		69.14 -0.3		55.58 -3.9		91.19 -6.2	
	6	91.34 3.8	93.01 -0.3		92.81 11.4		74.11 7.2		56.56 1.8		93.59 2.6	
	7	91.10 -0.3	97.00 4.3		85.91 -7.4		72.54 -2.1		59.33 4.9		93.81 0.2	
	8	90.73 -0.4	96.68 -0.3		88.13 2.6		76.88 6.0		61.21 3.2		89.73 -4.3	
	9	89.97 -0.8	98.00 1.4		86.08 -2.3		74.68 -2.9		56.53 -7.7		87.81 -2.1	
	10	93.75 4.2	103.01 5.1		87.93 2.1		74.68 0.0		57.08 1.0		92.74 5.6	
	11	93.04 -0.8	100.94 -2.0		88.24 0.4		76.87 2.9		55.49 -2.8		92.37 -0.4	
	12	94.67 1.7	109.59 8.6		85.75 -2.8		71.96 -6.4		54.72 -1.4		89.63 -3.0	
Annual average	90.83	96.80		86.95		71.37		56.08		92.58		
2017:	1	97.00 2.5	113.14 3.2		90.89 6.0		75.20 4.5		51.20 -6.4		87.79 -2.0	
	2	96.56 -0.5	105.90 -6.4		93.33 2.7		80.48 7.0		56.87 11.1		92.53 5.4	
	3	95.90 -0.7	101.04 -4.6		94.97 1.8		77.17 -4.1		60.15 5.8		95.95 3.7	
	4	92.86 -3.2	100.93 -0.1		90.30 -4.9		69.15 -10.4		53.92 -10.4		91.60 -4.5	
	5	93.96 1.2	100.42 -0.5		92.76 2.7		74.56 7.8		59.85 11.0		92.43 0.9	
	6	93.46 -0.5	99.59 -0.8		91.84 -1.0		75.50 1.3		57.48 -4.0		92.61 0.2	
	7	93.90 0.5	98.55 -1.0		92.82 1.1		81.50 8.0		56.15 -2.3		93.47 0.9	
	8	95.78 2.0	100.81 2.3		98.53 6.2		71.50 -12.3		54.62 -2.7		94.07 0.6	
	9	93.85 -2.0	99.39 -1.4		93.55 -5.1		71.67 0.2		56.87 4.1		93.57 -0.5	
	10	94.99 1.2	101.92 2.5		92.89 -0.7		74.21 3.5		57.39 0.9		94.18 0.7	
	11	95.03 0.04	105.07 3.1		91.16 -1.9		73.35 -1.2		56.15 -2.2		91.79 -2.5	
	12	96.49 1.5	102.65 -2.3		92.72 1.7		74.93 2.1		65.21 16.1		98.12 6.9	
Annual average	94.98	102.45		92.98		74.93		57.15		93.17		
2018:	1	96.53 0.04	102.23 -0.4		95.83 3.4		78.35 4.6		60.19 -7.7		95.45 -2.7	
	2	94.79 -1.8	101.69 -0.5		89.99 -6.1		75.20 -4.0		60.40 0.3		96.10 0.7	
	3	97.16 2.5	105.08 3.3		95.55 6.2		76.66 1.9		58.47 -3.2		94.50 -1.7	
	4	94.55 -2.7	100.12 -4.7		92.28 -3.4		81.80 6.7		60.18 2.9		93.82 -0.7	
	5	95.50 1.0	100.20 0.1		93.79 1.6		78.08 -4.5		58.04 -3.6		96.70 3.1	
	6	94.64 -0.9	100.95 0.8		92.48 -1.4		75.10 -3.8		55.99 -3.5		94.53 -2.2	
	7	95.47 0.9	99.48 -1.5		94.92 2.6		74.44 -0.9		54.58 -2.5		97.56 3.2	
	8	96.77 1.4	104.50 5.1		96.87 2.1		80.54 8.2		52.68 -3.5		92.14 -5.6	
	9	95.93 -0.9	104.37 -0.1		92.97 -4.0		77.75 -3.5		51.18 -2.8		93.69 1.7	

Notes:

1. The indices are rounded up to two decimal figures when published and percentage changes up to one decimal figure when published.
2. The whole time-series with seasonally adjusted indices is recalculated every time a new observation is added in the time-series.

METHODOLOGICAL NOTES

Generally	The Industrial Production Index (IPI) is compiled since 1959.
Purpose of the index	The IPI is an important business cycle indicator, which shows the monthly activity in the Mining and Quarrying, Manufacturing, Electricity and Water Supply divisions. More specifically, the objective of the Industrial Production Index is to compare the magnitude (volume) of the output in the current month with the corresponding output in any given period which is considered as base period. The IPI shows the evolution of the value added of the production factors cost, at constant prices.
Legal basis	The compilation of the IPI is governed by Council Regulation (EC) No 1165/98 concerning short-term statistics. Furthermore, the IPI is governed by Regulation (EC) No 1893/2006 of the European Parliament and of the Council, by Commission Regulation (EC) No 656/2007 and by Council Regulation (EC) No 451/2008.
Reference period	Month.
Base year	2010=100.0.
Revision	The IPI is a fixed base index. Pursuant to the provisions of Council Regulation No 1165/98 concerning short-term statistics, the index is updated every five (5) years, in years ending in 0 or 5.
Statistical classifications	At the level of branches of economic activities, the classification NACE Rev.2 of Eurostat was used (Regulation No 1893/2006), while at the level of main industrial groups, the allocation of two-digit and three-digit NACE Rev. 2 headings to categories of aggregate classification was used, in accordance with Council Regulation No 656/2007. At product level, the classification CPA 2008 of Eurostat was used, according to Council Regulation No 451/2008.
Geographical coverage	The Index covers the whole Country.
Coverage of economic activities	The index covers all the sections of industry, the main industrial groups, all levels of economic activities (divisions, groups and classes) and the level of products.
Statistical survey	The data are collected from a sample of 1,338 enterprises. The survey covers 354 products and the measurement of the surveyed products is made in terms of output quantities or in terms of production value or turnover, according to the specific situation in each branch of economic activity.
Seasonal adjustment	Seasonal adjustment is the procedure followed to remove the impact of seasonality on the time-series (i.e. the impact of monthly effects, e.g. holidays, tourist period etc), in order to improve comparability over time. The method used is the TRAMO-SEATS method with the use of JDemetra+ 2.0.0. For the seasonal adjustment of the Industrial Production Index at 2-digit level of NACE Rev.2, at section level (B – Mining and Quarrying, C – Manufacturing, D – Electricity and E – Water Supply) and for the Main Industrial Groupings (MIGs), the direct approach is applied, namely each time-series is seasonally adjusted independently. For the overall Industrial Production Index, the indirect approach is applied, with the seasonally adjusted IPI being computed by aggregating the seasonally adjusted MIGs using appropriate weights.
Publication of data	The IPI with the new base year (2010) is released since August 2014, with June 2014 as the first reference month. Data with base year 2010=100.0 are available from January 2000 onwards.
References	More information about the methodology concerning the compilation and calculation of the index and for the time series is available on the website of the Hellenic Statistical Authority (ELSTAT) (http://www.statistics.gr/en/statistics/-/publication/DKT21/-).