



## PRESS RELEASE

### Turnover indices in Transport Sector: 1st Quarter 2019

The Hellenic Statistical Authority (ELSTAT) announces the Turnover Indices in Transport Sector, with base year 2015=100.0, for the period from 2015 until the 1st quarter 2019. Specifically:

#### Year on Year growth rates

- The Turnover Index in **land transport and transport via pipelines** in the 1st quarter 2019 as compared to the 1st quarter 2018 decreased by 3.8%, while a decrease of 1.1% was observed for the corresponding period of 2018 compared to 2017 (Table 1, Graph 1).
- The Turnover Index in **water transport** in the 1st quarter 2019 as compared to the 1st quarter 2018 increased by 22.3%, while an increase of 0.3% was observed for the corresponding period of 2018 compared to 2017 (Table 1, Graph 2).
- The Turnover Index in **air transport** in the 1st quarter 2019 as compared to the 1st quarter 2018 decreased by 0.6%, while an increase of 7.0% was observed for the corresponding period of 2018 compared to 2017 (Table 2, Graph 3).
- The Turnover Index in **warehousing and support activities for transportation** in the 1st quarter 2019 as compared to the 1st quarter 2018 increased by 7.0%, while an increase of 14.4% was observed for the corresponding period of 2018 compared to 2017 (Table 2, Graph 4).
- The Turnover Index in **travel agency, tour operator reservation service and related activities** in the 1st quarter 2019 as compared to the 1st quarter 2018 decreased by 2.3%, while an increase of 24.8% was observed for the corresponding period of 2018 compared to 2017 (Table 3, Graph 5).

#### Information

*Trade and Services Statistics Division*

*Transports, Communications and Mass Media Section*

Sideri Spiridoula, Dalli Argyro, tel. (+30) 213 135 2056, 2499 (divisions 49, 51, 52, 79)

K. Papandreou, tel. (+30) 213 135 2187 (division 50)

Fax: (+30) 213 1352398

E-mail: [transport@statistics.gr](mailto:transport@statistics.gr)

### Quarter on Quarter growth rates

- The Turnover Index in **land transport and transport via pipelines** in the 1st quarter 2019 as compared to the 4th quarter 2018 decreased by 16.9%, while the decrease for the corresponding period of 2018 was 15.4% (Table 1, Graph 1).
- The Turnover Index in **water transport** in the 1st quarter 2019 as compared to the 4th quarter 2018 decreased by 8.9%, while the decrease for the corresponding period of 2018 was 17.1% (Table 1, Graph 2).
- The Turnover Index in **air transport** in the 1st quarter 2019 as compared to the 4th quarter 2018 decreased by 27.5%, while the decrease for the corresponding period of 2018 was 28.2% (Table 2, Graph 3).
- The Turnover Index in **warehousing and support activities for transportation**, in the 1st quarter 2019 as compared to the 4th quarter 2018 decreased by 6.7%, while the decrease for the corresponding period of 2018 was 9.2% (Table 2, Graph 4).
- The Turnover Index in **travel agency, tour operator reservation service and related activities**, in the 1st quarter 2019 as compared to the 4th quarter 2018 decreased by 50.7%, while the decrease for the corresponding period of 2018 was 32.1% (Table 3, Graph 5).

The tables and the graphs that follow present the evolution of the indices from 2015 onwards.

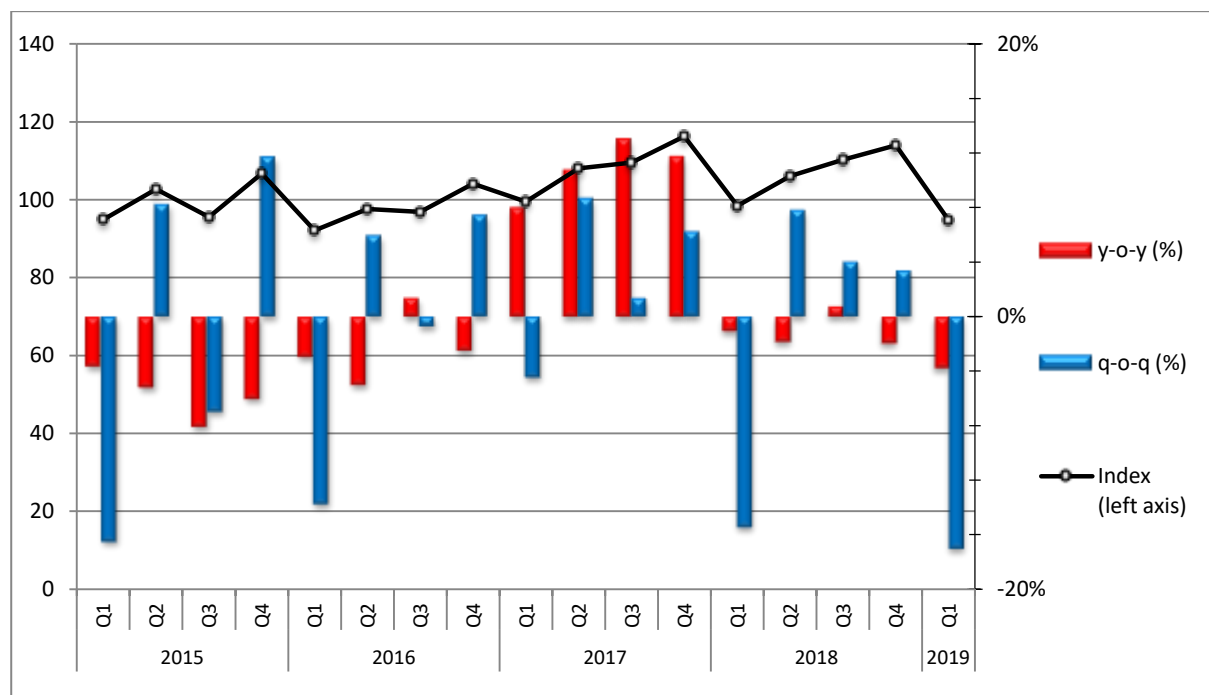
**Table 1. Turnover Indexes in Land Transport and transport via Pipelines (div 49 Nace rev.2) and in Water Transport (div 50 Nace rev.2), Base year: 2015=100.0**

Year	Quarter	Index (div 49) <sup>(1)</sup>	y-o-y change <sup>(1)</sup> (%)	q-o-q change <sup>(1)</sup> (%)	Index (div 50) <sup>(1)</sup>	y-o-y change <sup>(1)</sup> (%)	q-o-q change <sup>(1)</sup> (%)
2015	Q1	94.9	-3.6	-16.4	63.6	-3.3	-23.4
	Q2	102.7	-5.2	8.2	104.2	4.2	63.7
	Q3	95.6	-8.0	-6.9	154.9	-5.6	48.7
	Q4	106.8	-6.0	11.7	77.3	-6.9	-50.1
	<i>Annual average</i>	100.0	-5.7		100.0	-3.1	
2016	Q1	92.1	-2.9	-13.7	63.8	0.3	-17.5
	Q2	97.6	-5.0	5.9	98.2	-5.7	53.9
	Q3	96.9	1.4	-0.7	151.4	-2.2	54.3
	Q4	104.1	-2.5	7.4	68.4	-11.5	-54.8
	<i>Annual average</i>	97.7	-2.3		95.5	-4.5	
2017	Q1	99.5	8.0	-4.4	55.3	-13.3	-19.1
	Q2	108.1	10.7	8.6	87.0	-11.4	57.3
	Q3	109.5	13.0	1.3	136.1	-10.1	56.4
	Q4	116.3	11.7	6.2	66.9	-2.2	-50.8
	<i>Annual average</i>	108.3	10.9		86.4	-9.5	
2018	Q1	98.4	-1.1	-15.4	55.5	0.3	-17.1
	Q2	106.1	-1.8	7.8	94.0	8.0	69.3
	Q3	110.3	0.7	4.0	120.6	-11.4	28.3
	Q4	114.0	-2.0	3.4	74.5	11.3	-38.2
	<i>Annual average</i>	107.2	-1.0		86.1	-0.2	
2019	Q1	94.7	-3.8	-16.9	67.9	22.3	-8.9

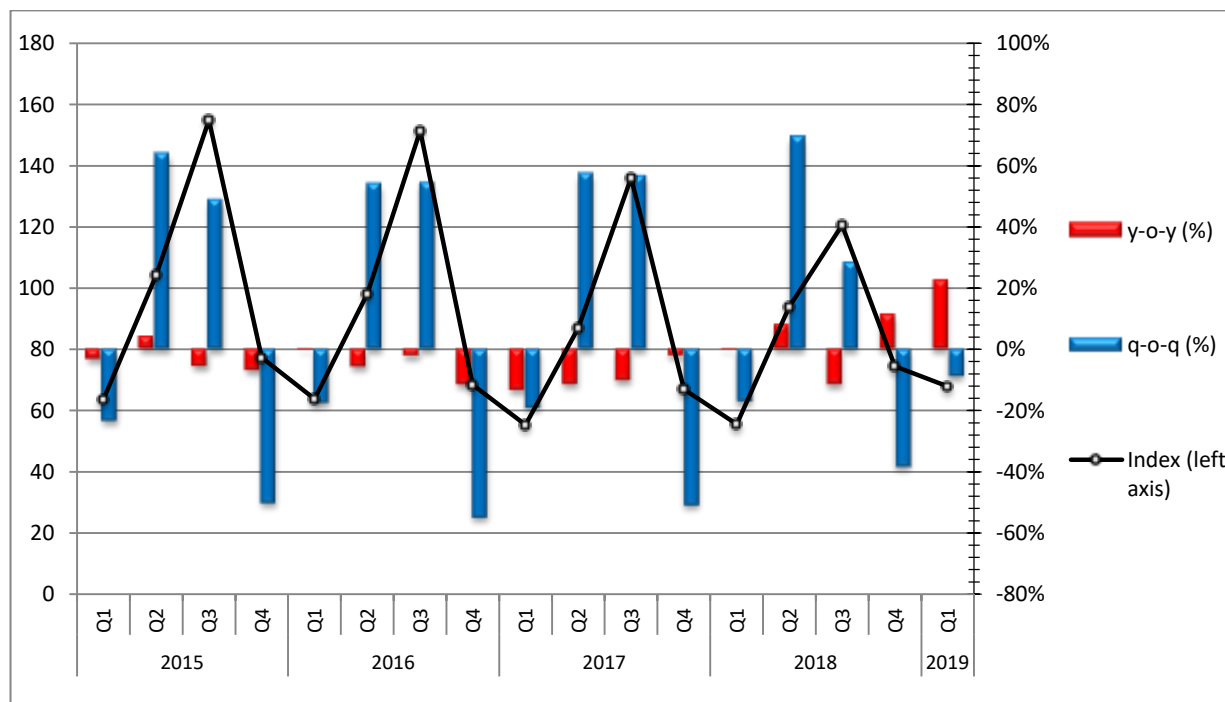
<sup>(1)</sup> Revised data

**Graph 1. Evolution of Turnover Index in Land Transport and Transport via Pipelines - div 49 Nace rev.2**

Base year 2015=100.0



**Graph 2. Evolution of Turnover Index in Water Transport - div 50 Nace rev.2, Base year 2015=100.0**

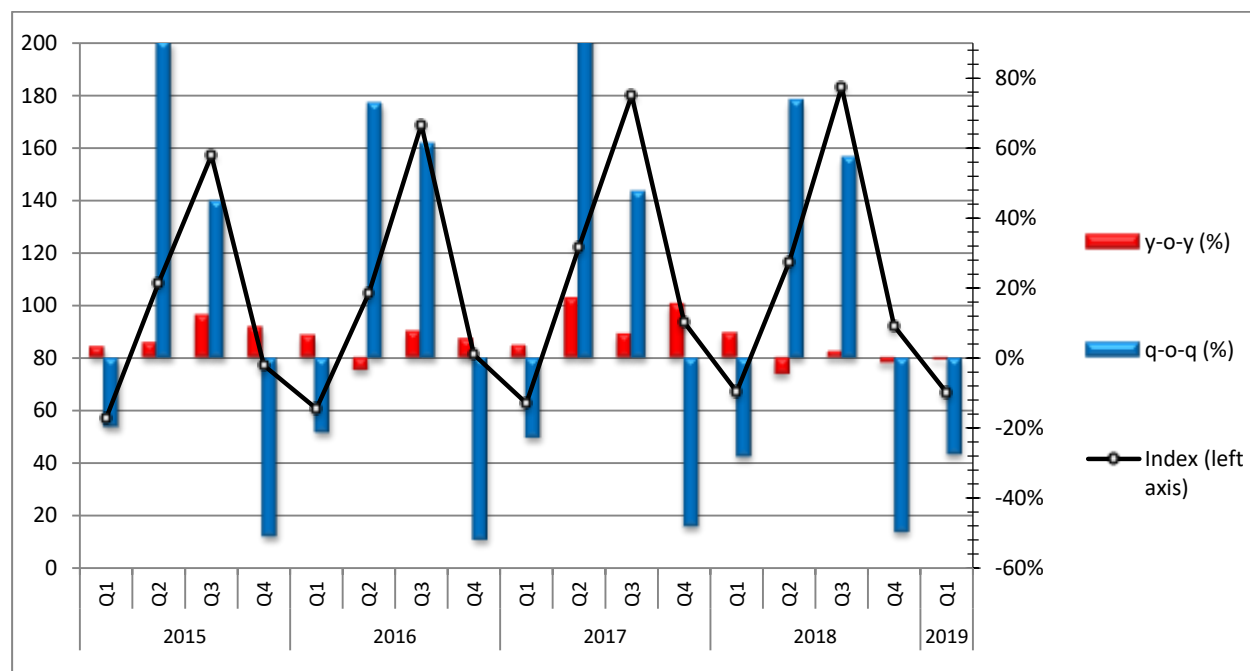


**Table2. Turnover Indexes in Air Transport (div 51 Nace rev.2) and in Warehousing and Support Activities for Transportation (div 52 Nace rev.2), Base year: 2015=100.0**

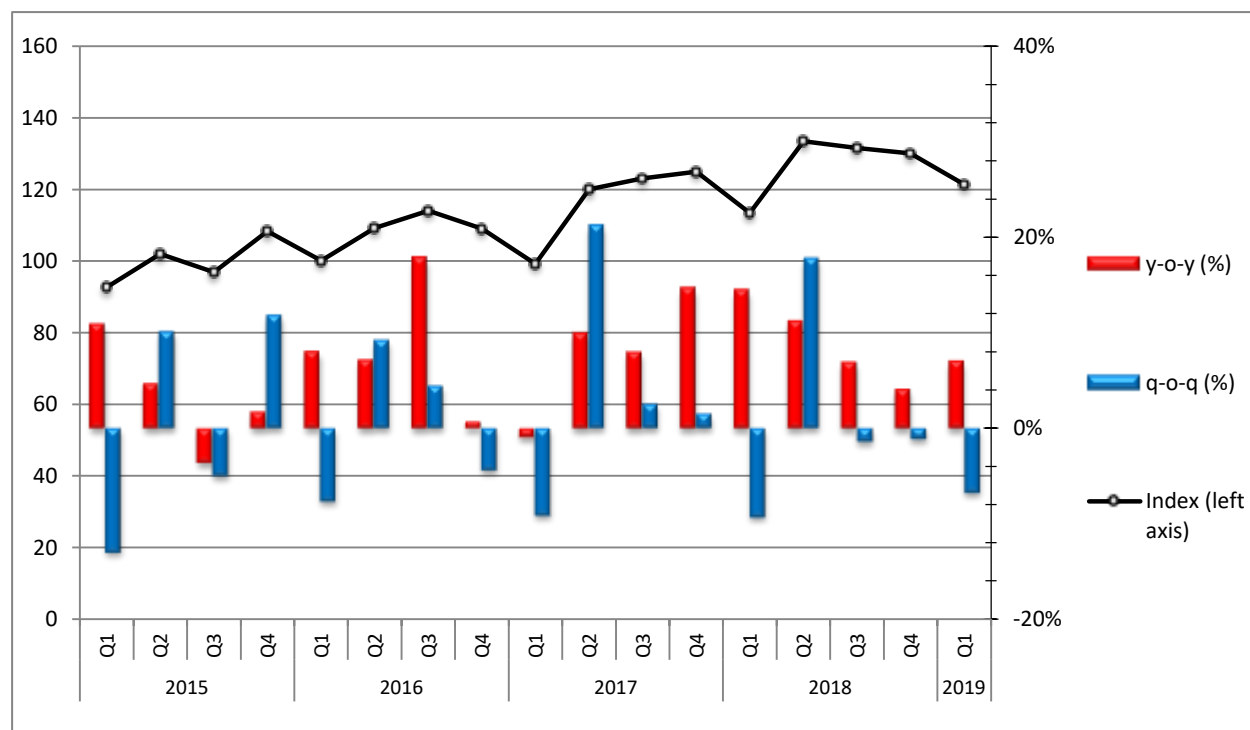
Year	Quarter	Index (div 51) <sup>(1)</sup>	y-o-y change <sup>(1)</sup> (%)	q-o-q change <sup>(1)</sup> (%)	Index (div 52) <sup>(1)</sup>	y-o-y change <sup>(1)</sup> (%)	q-o-q change <sup>(1)</sup> (%)
2015	Q1	57.1	3.1	-19.7	92.7	10.8	-12.9
	Q2	108.6	4.3	90.2	102.0	4.7	10.0
	Q3	157.2	11.8	44.7	96.9	-3.6	-5.0
	Q4	77.2	8.5	-50.9	108.3	1.8	11.8
	<i>Annual average</i>	<b>100.0</b>	<b>7.8</b>		<b>100.0</b>	<b>3.1</b>	
2016	Q1	60.7	6.2	-21.4	100.1	8.0	-7.6
	Q2	104.8	-3.5	72.8	109.3	7.1	9.1
	Q3	168.9	7.4	61.1	114.1	17.7	4.4
	Q4	81.3	5.4	-51.9	109.1	0.7	-4.4
	<i>Annual average</i>	<b>103.9</b>	<b>3.9</b>		<b>108.1</b>	<b>8.1</b>	
2017	Q1	62.8	3.5	-22.8	99.2	-0.9	-9.1
	Q2	122.2	16.6	94.6	120.1	9.9	21.1
	Q3	180.2	6.7	47.5	123.1	7.9	2.5
	Q4	93.6	15.1	-48.1	125.0	14.6	1.5
	<i>Annual average</i>	<b>114.7</b>	<b>10.4</b>		<b>116.9</b>	<b>8.1</b>	
2018	Q1	67.2	7.0	-28.2	113.4	14.4	-9.2
	Q2	116.6	-4.6	73.5	133.5	11.1	17.6
	Q3	183.3	1.7	57.3	131.6	6.9	-1.4
	Q4	92.2	-1.5	-49.7	130.1	4.1	-1.1
	<i>Annual average</i>	<b>114.8</b>	<b>0.1</b>		<b>127.2</b>	<b>8.8</b>	
2019	Q1	66.8	-0.6	-27.5	121.4	7.0	-6.7

<sup>(1)</sup> Revised data

**Graph 3. Evolution of Turnover Index in air Transport - div 51 Nace rev.2, Base year 2015=100.0**



**Graph 4. Evolution of Turnover Index in Warehousing and Support Activities for Transportation - div 52 Nace rev.2, Base year 2015=100.0**

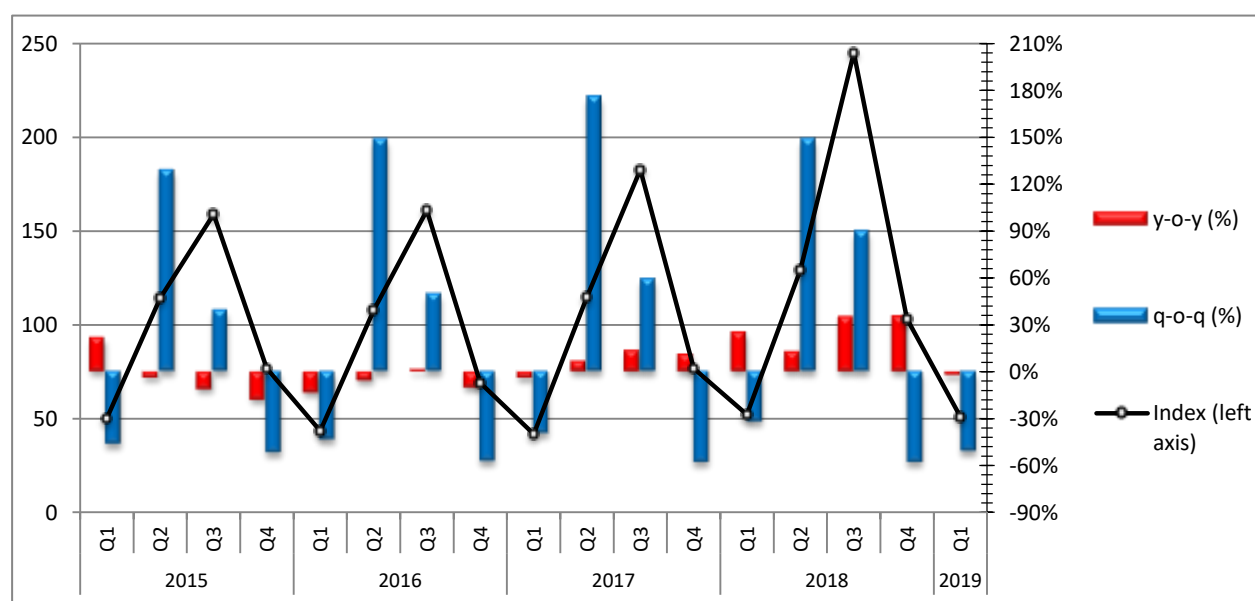


**Table 3. Turnover Index in Travel Agency, Tour Operator Reservation Service and Related Activities (div. 79 Nace rev. 2), Base year: 2015=100.0**

Year	Quarter	Index (div 79) <sup>(1)</sup>	y-o-y change <sup>(1)</sup> (%)	q-o-q change <sup>(1)</sup> (%)
2015	Q1	50.1	21.2	-46.2
	Q2	114.2	-3.9	128.2
	Q3	158.9	-11.0	39.2
	Q4	76.8	-17.6	-51.7
	Annual average	100.0	-7.4	
2016	Q1	43.5	-13.2	-43.4
	Q2	107.7	-5.7	147.9
	Q3	161.1	1.4	49.5
	Q4	69.0	-10.1	-57.2
	Annual average	95.3	-4.7	
2017	Q1	41.7	-3.9	-39.5
	Q2	114.9	6.6	175.2
	Q3	182.7	13.4	59.1
	Q4	76.7	11.1	-58.0
	Annual average	104.0	9.1	
2018	Q1	52.1	24.8	-32.1
	Q2	129.3	12.6	148.2
	Q3	245.1	34.1	89.5
	Q4	103.2	34.6	-57.9
	Annual average	132.4	27.3	
2019	Q1	50.9	-2.3	-50.7

<sup>(1)</sup> Revised data

**Graph 5. Evolution of Turnover Index in Travel Agency, Tour Operator Reservation Service and Related Activities - div. 79 Nace rev. 2, Base year 2015=100.0**



## EXPLANATORY NOTES

**Turnover indices in Transport sector** The turnover indices in services are important business indicators, which show the evolution of the services market. The purpose of these indices is to estimate the activity of the surveyed sector in value terms. Turnover comprises the totals invoiced by the observation unit during the reference period (quarter) and corresponds to the market sales of goods and services supplied to third parties. Subsidies on goods or services are also included. Turnover excludes VAT and other similar deductible taxes directly linked to turnover, as well as all duties and taxes on the goods or services invoiced by the observation unit. Income classified as other operating income, financial income and extraordinary income in company accounts is also excluded from turnover.

**Legal basis** The Turnover indices in Transport Sector are compiled on a quarterly basis in compliance with Council Regulation (EC) No 1165/98 concerning short-term statistics as well as pursuant to the requirements Regulation (EC) 1158/2005 of the European Parliament and Council amending the Council Regulation (EC) No 1165/98.

**Reference Period** January 1<sup>st</sup> 2019 - March 31<sup>st</sup> 2019

**Base Year** 2015=100.0

**Revision** The Turnover Indices in Transport Sector have been revised with new base year 2015=100.0.  
The revision was carried out in the framework agreement of the Member-States of the EU and is obligatory for reasons of comparability. These indicators are revised every five years and specifically in years ending in "0" and "5".

**Coverage** The compilation of these indices comprises enterprises with year turnovers equal or higher than 250.000 euro, represented by a sample of 444 enterprises covering the total of the country.

**Methodology** The Turnover Indices in Transport Sector cover the whole country and are compiled for divisions 49 – land transport / transport via pipelines, 50 – water transport, 51 – air transport, 52 – warehousing and support activities for transportation and 79 - travel agency, tour operator reservation service and related activities of NACE – Rev.2, statistical classification.  
The turnover indices in Transport sector are estimated by applying the forward chaining technique. In a first stage, the floating base index is calculated by comparing the estimated turnover value of the current quarter (on the basis of a sample of enterprises) with the corresponding value of the previous quarter. The fixed index of any two-digit division of business activity for the current quarter results from the multiplication of the floating base index by the fixed index of the previous quarter.  
It is noted, that from the 3rd quarter of the year 2018, shipping companies that are established as branches of foreign enterprises and operate in overseas shipping (enterprises of Law 27/1975 article 25) are included in the sample of the companies of the Water Transport sector (Sector 50).