



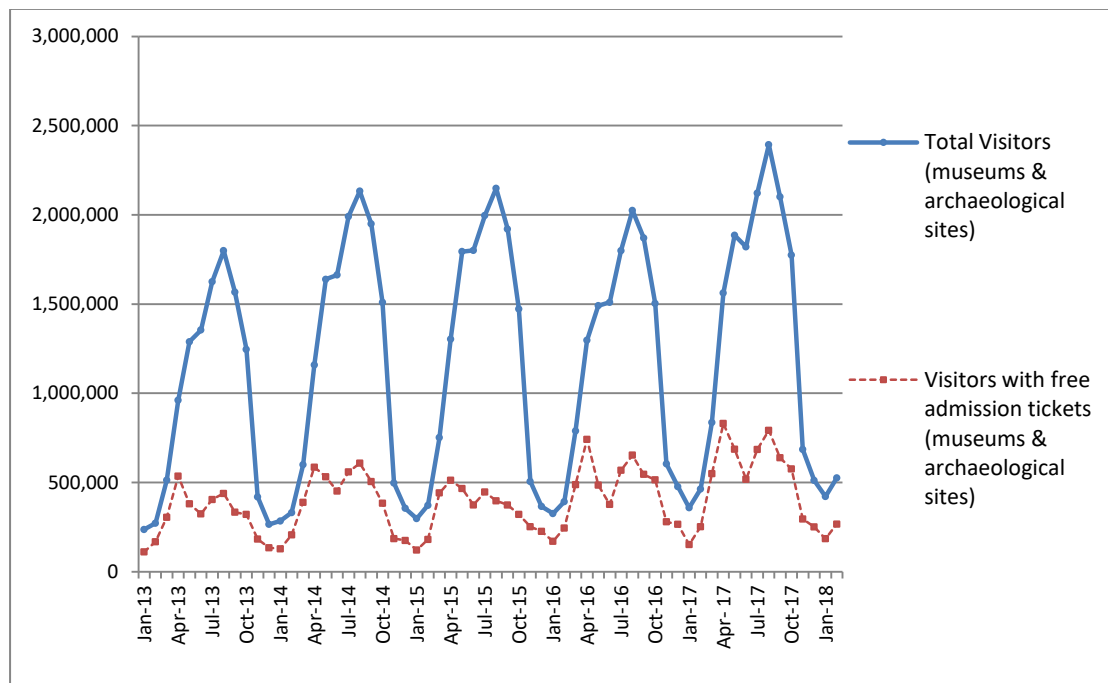
PRESS RELEASE

SURVEY ON MUSEUMS AND ARCHAEOLOGICAL SITES ATTENDANCE FEBRUARY 2018

The Hellenic Statistical Authority (ELSTAT) announces the results of the *Survey on Museums and Archaeological Sites Attendance* for February 2018, More specifically:

- In February 2018 compared with the corresponding month of 2017, Museums experienced a 2.9% decrease in the number of visitors and a 3.9% decrease in the number of free admission visitors as well as a 5.4% decrease in their receipts (Table 1),
- In February 2018 compared with the corresponding month of 2017, the number of visitors at Archaeological sites recorded an increase of 29.3%, while an increase of 16.5% was observed in the number of free admission visitors and a 36.6% increase in the corresponding receipts (Table 1),
- During the two-month period from January to February 2018, an increase of 0.7% was observed in the number of visitors of Museums, while an increase of 1.5% was recorded in the number of free admission visitors and a 3.5% decrease in the relevant receipts, in comparison with the corresponding period of 2017 (Table 2),
- As regards Archaeological sites, during the two-month period from January to February 2017, an increase of 28.8% was recorded in the number of visitors, while a 23.0% decrease was observed in the number of free admission visitors and a 26.3% increase in the relevant receipts, in comparison with the corresponding period of 2017 (Table 2),

Graph 1: Visitors of Museums and Archaeological sites (Jan 2013 – Feb 2018)



Information:

Social Statistics Division

Section of Culture and Sports statistics,

Argyro Pateraki (Tel: +30 213 1352129, e-mail: ar.pateraki@statistics.gr)

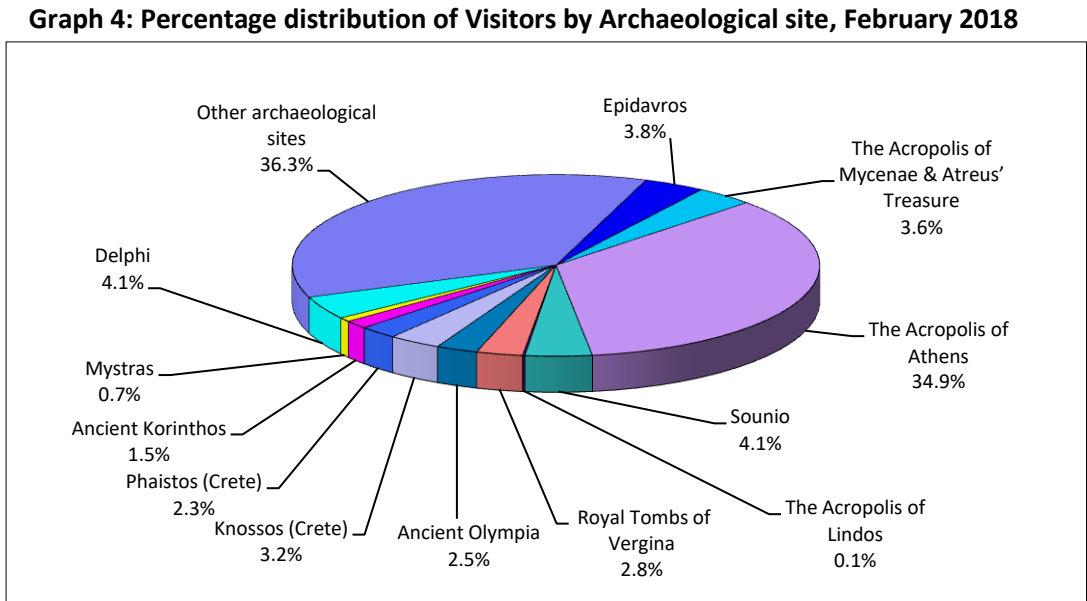
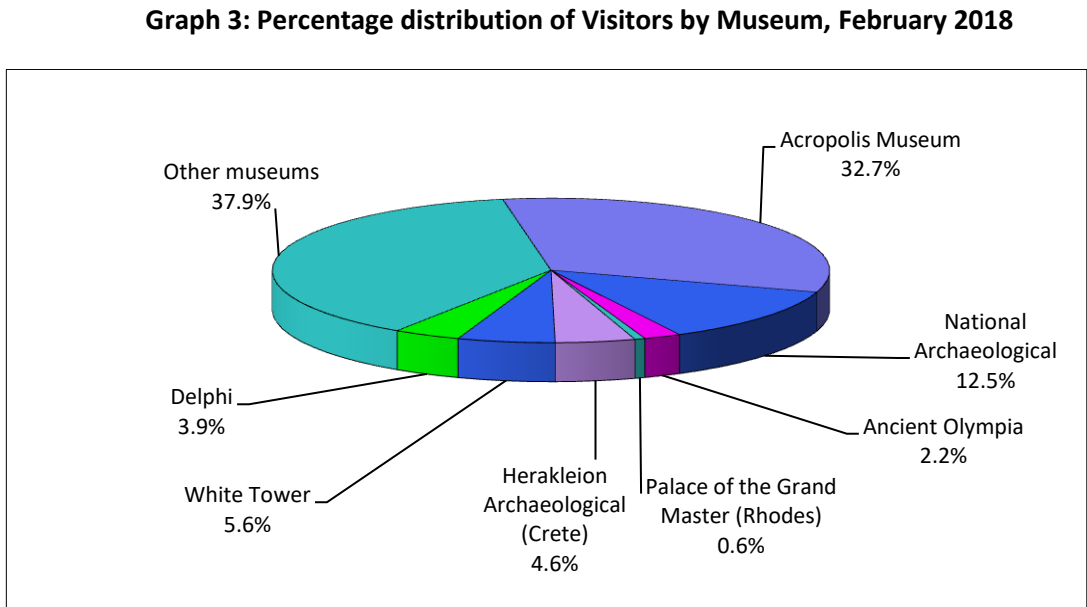
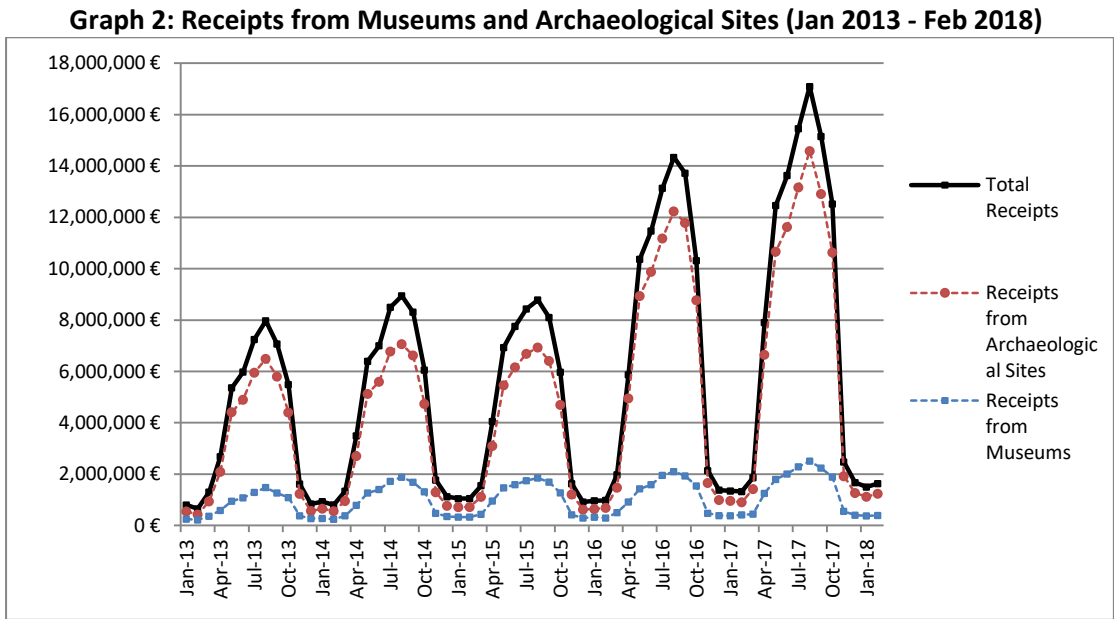
**TABLE 1: VISITORS OF MUSEUMS AND ARCHAEOLOGICAL SITES - TOTAL RECEIPTS
(FEBRUARY 2017 & FEBRUARY 2018)**

I. VISITORS			
Museums and Archaeological sites	2017	2018	Change 2018/2017
Total number of visitors (A+B)	463,118	525,274	13.4%
A. Museums (C+E)	228,811	222,269	-2.9%
Acropolis Museum	70,682	72,650	2.8%
National Archaeological	27,577	27,740	0.6%
Ancient Olympia	3,129	4,789	53.1%
Palace of the Grand Master (Rhodes)	2,104	1,331	-36.7%
Herakleion Archaeological (Crete)	3,032	10,268	238.7%
White Tower	16,772	12,522	-25.3%
Delphi	6,392	8,625	34.9%
Other museums	99,123	84,344	-14.9%
B. Archaeological Sites (D+F)	234,307	303,005	29.3%
Epidavros ⁽¹⁾	8,207	11,413	39.1%
The Acropolis of Mycenae & Atreus' Treasure	9,282	10,783	16.2%
The Acropolis of Athens ⁽²⁾	62,831	105,804	-
Sounio	10,168	12,382	21.8%
The Acropolis of Lindos	727	413	-43.2%
Royal Tombs of Vergina	8,141	8,593	5.6%
Ancient Olympia	5,274	7,693	45.9%
Knossos (Crete)	3,438	9,702	182.2%
Phaistos (Crete)	390	7,053	1708.5%
Ancient Korinthos ⁽¹⁾	3,727	4,461	19.7%
Mystras ⁽¹⁾	1,756	2,269	29.2%
Delphi	10,717	12,461	16.3%
Other archaeological sites	109,649	109,978	0.3%
II. VISITORS WHO PAID TICKET			
	2017	2018	Change 2018/2017
Total number of visitors who paid ticket (C+D)	211,505	259,111	22.5%
C. Museums	96,713	95,324	-1.4%
D. Archaeological sites	114,792	163,787	42.7%
III. VISITORS WITH FREE ADMISSION TICKETS			
	2017	2018	Change 2018/2017
Total number of visitors with free admission ticket (E+F)	251,613	266,163	5.8%
E. Museums	132,098	126,945	-3.9%
F. Archaeological sites	119,515	139,218	16.5%
IV. RECEIPTS (euros)			
	2017	2018	Change 2018/2017
Total Receipts (G+H)	1,322,672.00	1,632,396.00	23.4%
G. Museums	415,450.00	392,847.00	-5.4%
H. Archaeological sites	907,222.00	1,239,549.00	36.6%

⁽¹⁾ Flat rate ticket, valid both for the museum and the archaeological site,

⁽²⁾ From May 2017 onwards, the data for the number of tickets in the archaeological site of the Acropolis of Athens include the tickets of the Ancient Theatre of Dionysos, therefore the data for the years 2017-2018 are not comparable.

The following graphs depict the evolution of the receipts (Graph 2), as well as the number of visitors by Museum and Archaeological Site (Graphs 3 and 4, respectively),



**TABLE 2: VISITORS OF MUSEUMS AND ARCHAEOLOGICAL SITES - TOTAL RECEIPTS
(2016, 2017 AND JANUARY-FEBRUARY 2017 & 2018)**

I. VISITORS					
Museums and Archaeological sites	2016	2017	JANUARY-FEBRUARY		change
			2017	2018	2018/2017
Total number of visitors (A+B)	14,080,639	16,510,878	821,207	946,297	15.2%
A. Museums (C+E)	4,515,966	5,191,781	395,178	397,776	0.7%
Acropolis Museum	1,406,096	1,593,362	129,860	134,147	3.3%
National Archaeological	447,093	545,555	49,698	52,586	5.8%
Ancient Olympia	124,136	145,118	4,536	6,761	49.1%
Palace of the Grand Master (Rhodes)	237,361	235,413	3,597	2,524	-29.8%
Herakleion Archaeological (Crete)	394,915	426,191	4,891	15,501	216.9%
White Tower	290,192	268,149	31,459	23,727	-24.6%
Delphi	166,091	211,827	12,558	15,130	20.5%
Other museums	1,450,082	1,766,166	158,579	147,400	-7.0%
B. Archaeological Sites (D+F)	9,564,673	11,319,097	426,029	548,521	28.8%
Epidavros ⁽¹⁾	375,437	469,060	15,046	19,015	26.4%
The Acropolis of Mycenae & Atreus' Treasure	342,854	398,718	16,144	19,135	18.5%
The Acropolis of Athens	1,807,580	2,766,218	114,082	198,316	-
Sounio	222,800	259,709	17,722	22,811	28.7%
The Acropolis of Lindos	421,070	441,012	1,183	792	-33.1%
Royal Tombs of Vergina	186,627	203,632	12,020	13,956	16.1%
Ancient Olympia	423,424	481,252	9,191	13,234	44.0%
Knossos (Crete)	611,455	634,710	6,466	14,730	127.8%
Phaistos (Crete)	77,071	95,182	754	11,167	1381.0%
Ancient Korinthos ⁽¹⁾	153,307	191,836	7,211	9,141	26.8%
Mystras ⁽¹⁾	114,293	125,549	3,267	4,063	24.4%
Delphi	290,705	345,804	18,667	23,078	23.6%
Other archaeological sites	4,538,050	4,906,415	204,276	199,083	-2.5%
II. VISITORS WHO PAID TICKET					
	2016	2017	JANUARY-FEBRUARY		change
			2017	2018	2018/2017
Total number of visitors who paid ticket (C+D)	8,749,957	10,288,448	417,864	495,428	18.6%
C. Museums	2,406,665	2,831,466	184,883	184,380	-0.3%
D. Archaeological sites	6,343,292	7,456,982	232,981	311,048	33.5%
III. VISITORS WITH FREE ADMISSION TICKETS					
	2016	2017	JANUARY-FEBRUARY		change
			2017	2018	2017/2016
Total number of visitors with free admission ticket (E+F)	5,330,682	6,222,430	403,343	450,869	11.8%
E. Museums	2,109,301	2,360,315	210,295	213,396	1.5%
F. Archaeological sites	3,221,381	3,862,115	193,048	237,473	23.0%
IV. RECEIPTS (euros)					
	2016	2017	JANUARY-FEBRUARY		change
			2017	2018	2017/2016
Total Receipts (G+H)	86,647,638.00	102,887,879.00	2,666,509.00	3,131,128.00	17.4%
G. Museums	13,448,464.00	16,175,121.00	797,126.00	769,251.00	-3.5%
H. Archaeological sites	73,199,174.00	86,712,758.00	1,869,383.00	2,361,877.00	26.3%

⁽¹⁾ Flat rate ticket, valid both for the museum and the archaeological site,

⁽²⁾ From May 2017 onwards, the data for the number of tickets in the archaeological site of the Acropolis of Athens include the tickets of the Ancient Theatre of Dionysos, therefore the data for the years 2017-2018 are not comparable.

EXPLANATORY NOTES

Survey on Museums and Archaeological Sites Attendance	The Survey on Museums and Archaeological Sites Attendance has been producing results since 1970, The survey collects data from the Archaeological Receipts Fund (ARF) of the Ministry of Culture and Sports concerning the number of visitors and the receipts from the tickets sold in the Museums and Archaeological sites of the country. The corresponding data for the Acropolis Museum are available from December 2009 onwards.
Legal Framework	The survey is conducted since 1970 on a regular basis and it produces results on a monthly and yearly basis, in compliance with the Joint Ministerial Decision 15189/B379/73.
Reference Period	01/02/2018 to 28/02/2018.
Methodology and Definitions	The Survey is conducted on a monthly basis from data collected from the Archaeological Receipts Fund (ARF) of the Ministry of Culture and Sports concerning on the number of visitors and the receipts from the tickets sold in the Museums and Archaeological sites of the country, ELSTAT tabulates the data on Museums and the Archaeological sites for the whole of the Country, by month and by year.

Information on ticket payment

- From January 2002 onwards, the number of Museums' visitors includes both the visitors who have bought a ticket and the visitors with free admission ticket, From 16-06-1996 onwards, the Museums and the Archaeological sites all over Greece have a paid admission for all the visitors, Greeks and foreigners, all over the year, except in the following days, which are free admission days:
- National Holidays (25th of March and 28th of October)
- The first Sunday every month during the five month period from 1 November to 31 March
- The 6th of March (in memory of Melina Merkouri)
- The 18th of April (International Monuments Day)
- The 18th of May (International Museums Day)
- The 5th of June (International Environment Day)
- The last weekend of September, annually (European Heritage Days)

Free admission tickets

The admission to Museums and Archaeological site is free for:

- Young people from EU-countries aged under 18 years, with current identification card to confirm their age,
- Students of Universities and of Higher and Technical Education Institutions or equivalent institutions of EU-countries, as well as of Tour Guide Training Institutes, with valid student identification card or International Student Identity Card (ISIC)
- Employees of the Hellenic Ministry of Culture, with valid professional identity card
- ICOM and ICOMOS cardholders
- Tour Guides with their current working identification card from the Ministry of Development
- Teachers accompanying pupils and students on primary, secondary and tertiary education institution tours
- Journalists with valid journalists' identification card
- Members of Associations and Societies of Friends of Museums and Archaeological Sites
- Official guests of the Greek Government, after relevant approval
- Escorts of blind persons and persons with disabilities
- Free admission cardholders
- Holders of the Culture Card

Number of flat rate tickets

From April 1999 onwards, in some museums and the nearby archaeological sites, in addition to the ordinary ticket, a new "flat rate ticket" was established, which is valid for both the museum and the nearby archaeological site, The total number of these flat rate tickets for **February 2017** was **13,460**.

References	More information on the Survey on Museums and Archaeological Sites Attendance and detailed time series are available on: http://www.statistics.gr/en/statistics/-/publication/SCI21/
-------------------	--