



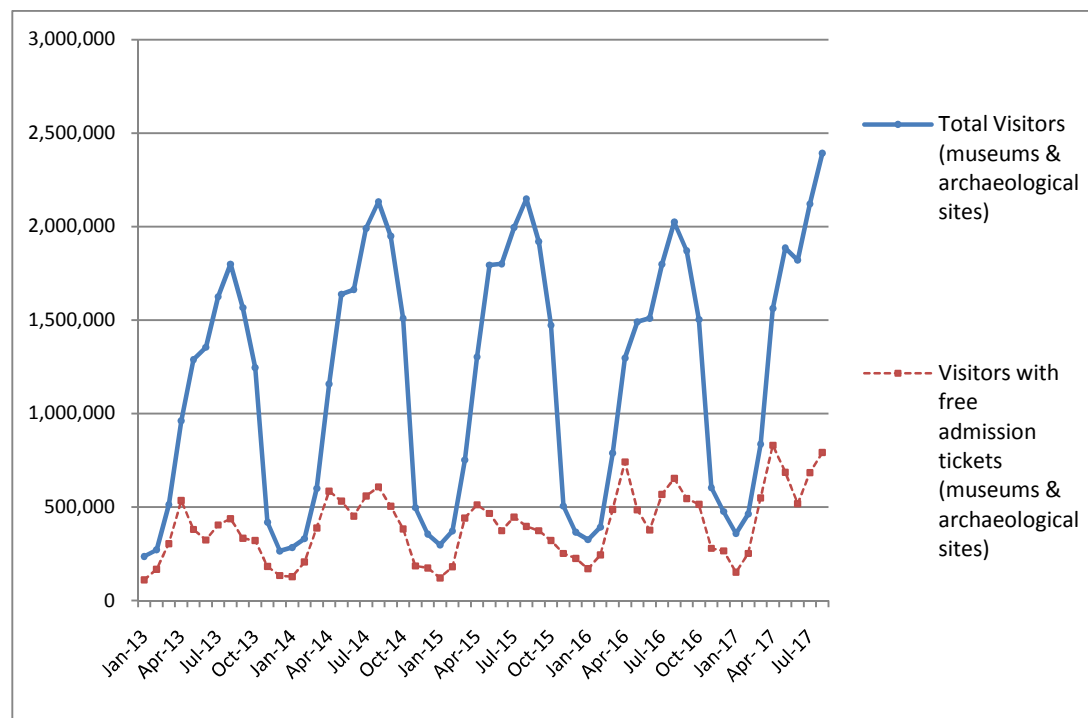
PRESS RELEASE

SURVEY ON MUSEUMS AND ARCHAEOLOGICAL SITES ATTENDANCE AUGUST 2017

The Hellenic Statistical Authority (ELSTAT) announces the results of the *Survey on Museums and Archaeological Sites Attendance* for August 2017. More specifically:

- In August 2017 compared with the corresponding month of 2016, Museums experienced a 15.8% increase in the number of visitors and a 15.8% increase in the number of free admission visitors as well as a 19.5% increase in their receipts (Table 1).
- In August 2017 compared with the corresponding month of 2016, the number of visitors at Archaeological sites recorded an increase of 19.2%, while an increase of 25.9% was observed in the number of free admission visitors and a 19.2% increase in the corresponding receipts (Table 1).
- During the eight-month period from January to August 2017, an increase of 17.4% was observed in the number of visitors of Museums, while an increase of 15.9% was recorded in the number of free admission visitors and a 21.7% increase in the relevant receipts, in comparison with the corresponding period of 2016 (Table 2).
- As regards Archaeological sites, during the eight -month period from January to August 2017, an increase of 19.5% was recorded in the number of visitors, while a 22.2% increase was observed in the number of free admission visitors and a 20.0% increase in the relevant receipts, in comparison with the corresponding period of 2016 (Table 2).

Graph 1: Visitors of Museums and Archaeological sites (Jan 2013 – Aug 2017)



Information:

Social Statistics Division

Section of Culture and Sports statistics,

Argyro Pateraki (Tel: +30 213 1352129, e-mail: ar.pateraki@statistics.gr)

**TABLE 1: VISITORS OF MUSEUMS AND ARCHAEOLOGICAL SITES - TOTAL RECEIPTS
(AUGUST 2016 & AUGUST 2017)**

I. VISITORS			
Museums and Archaeological sites	2016	2017	Change 2017/2016
Total number of visitors (A+B)	2,024,469	2,392,991	18.2%
A, Museums (C+E)	581,652	673,520	15.8%
Acropolis Museum	168,276	192,113	14.2%
National Archaeological	53,222	63,815	19.9%
Ancient Olympia	15,018	17,863	18.9%
Palace of the Grand Master (Rhodes)	45,442	44,608	-1.8%
Herakleion Archaeological (Crete) ⁽³⁾	71,298	76,184	6.9%
White Tower	35,332	37,960	7.4%
Delphi	16,488	22,541	36.7%
Other museums	176,576	218,436	23.7%
B, Archaeological Sites (D+F)	1,442,817	1,719,471	19.2%
Epidavros ⁽¹⁾	54,735	63,573	16.1%
The Acropolis of Mycenae & Atreus' Treasure	44,887	53,904	20.1%
The Acropolis of Athens ⁽²⁾	214,021	388,346	-
Sounio	27,196	32,164	18.3%
The Acropolis of Lindos	87,591	88,087	0.6%
Royal Tombs of Vergina	18,398	20,854	13.3%
Ancient Olympia	73,956	84,425	14.2%
Knossos (Crete)	115,194	122,302	6.2%
Phaistos (Crete)	14,673	15,573	6.1%
Ancient Korinthos ⁽¹⁾	17,405	19,678	13.1%
Mystras ⁽¹⁾	19,392	21,912	13.0%
Delphi	35,894	43,435	21.0%
Other archaeological sites	719,475	765,218	6.4%
II, VISITORS WHO PAID TICKET			
	2016	2017	Change 2017/2016
Total number of visitors who paid ticket (C+D)	1,371,383	1,601,203	16.8%
C, Museums	343,616	404,392	17.7%
D, Archaeological sites	1,027,767	1,196,811	16.4%
III. VISITORS WITH FREE ADMISSION TICKETS			
	2016	2017	Change 2017/2016
Total number of visitors with free admission ticket (E+F)	653,086	791,788	21.2%
E. Museums	238,036	269,128	13.1%
F. Archaeological sites	415,050	522,660	25.9%
IV. RECEIPTS (euros)			
	2016	2017	Change 2017/2016
Total Receipts (G+H)	14,333,176.00	17,092,065.00	19.2%
G. Museums	2,099,341.00	2,508,929.00	19.5%
H, Archaeological sites	12,233,835.00	14,583,136.00	19.2%

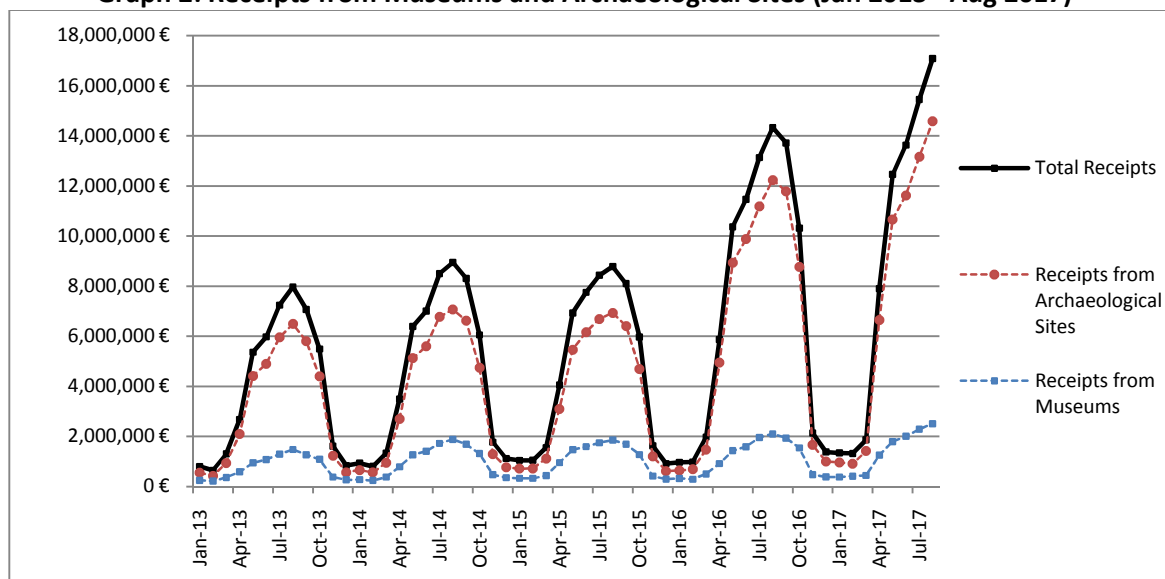
⁽¹⁾ Flat rate ticket, valid both for the museum and the archaeological site

⁽²⁾ From May 2017 onwards, the data for the number of tickets in the archaeological site of the Acropolis of Athens include the tickets of the Ancient Theatre of Dionysos, therefore the data for the years 2016-2017 are not comparable.

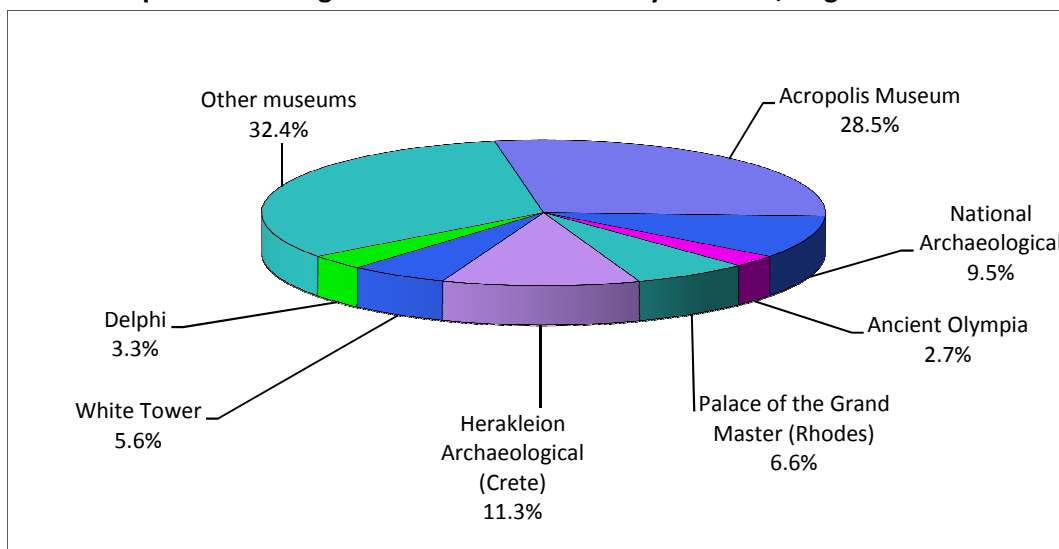
⁽³⁾ The data on the number of visitors to the Heraklion Museum for August 2016 have been revised

The following graphs depict the evolution of the receipts (Graph 2), as well as the number of visitors by Museum and Archaeological Site (Graphs 3 and 4 respectively),

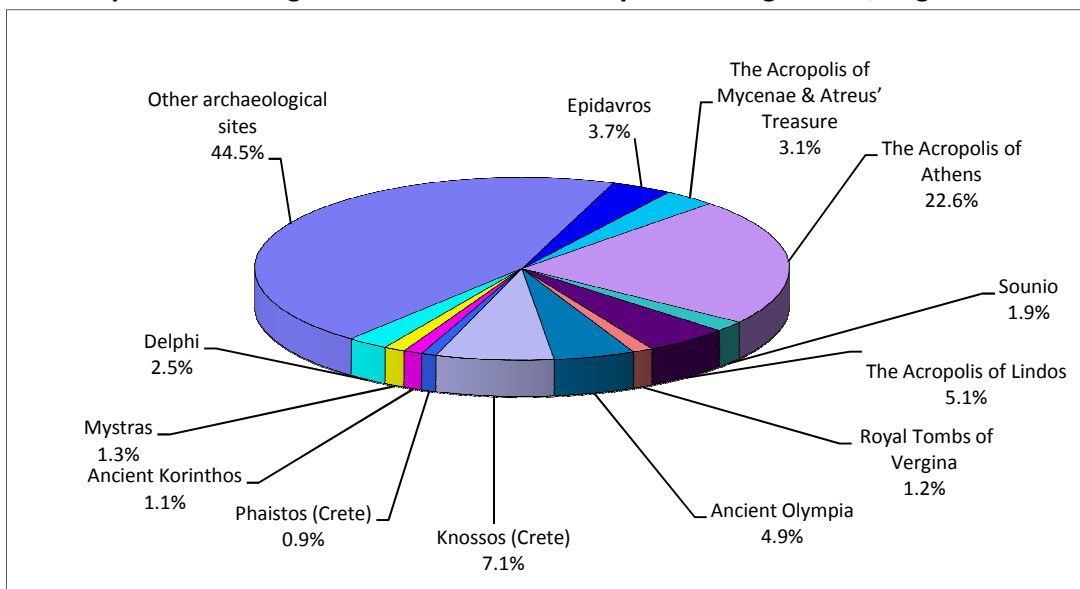
Graph 2: Receipts from Museums and Archaeological Sites (Jan 2013 - Aug 2017)



Graph 3: Percentage distribution of Visitors by Museum, August 2017



Graph 4: Percentage distribution of Visitors by Archaeological site, August 2017



**TABLE 2: VISITORS OF MUSEUMS AND ARCHAEOLOGICAL SITES - TOTAL RECEIPTS
(2015, 2016 AND JANUARY- AUGUST 2016 & 2017)**

I. VISITORS					
Museums and Archaeological sites	2015	2016	JANUARY- AUGUST		change
			2016	2017	2017/2016
Total number of visitors (A+B)	14,725,895	14,080,639	9,626,645	11,439,145	18,8%
A, Museums (C+E)	4,405,842	4,515,966	3,056,335	3,588,767	17.4%
Acropolis Museum	1,510,615	1,406,096	956,805	1,103,167	15.3%
National Archaeological	476,754	447,093	307,966	378,367	22.9%
Ancient Olympia	135,972	124,136	91,184	105,438	15.6%
Palace of the Grand Master (Rhodes)	251,091	237,361	158,286	161,428	2.0%
Herakleion Archaeological (Crete) ⁽³⁾	201,657	394,915	274,780	282,001	2.6%
White Tower	273,659	290,192	185,898	188,394	1.3%
Delphi	205,369	166,091	117,542	151,378	28.8%
Other museums	1,350,725	1,450,082	963,874	1,218,594	26.4%
B, Archaeological Sites (D+F)	10,320,053	9,564,673	6,570,310	7,850,378	19.5%
Epidavros ⁽¹⁾	443,565	375,437	273,411	347,450	27.1%
The Acropolis of Mycenae & Atreus' Treasure	402,565	342,854	250,369	286,229	14.3%
The Acropolis of Athens	2,043,868	1,807,580	1,243,185	1,855,522	-
Sounio	236,285	222,800	157,113	181,143	15.3%
The Acropolis of Lindos	580,875	421,070	290,405	300,624	3.5%
Royal Tombs of Vergina	211,132	186,627	132,320	144,897	9.5%
Ancient Olympia	439,836	423,424	301,359	339,260	12.6%
Knossos (Crete)	632,288	611,455	434,207	434,440	0.1%
Phaistos (Crete)	94,689	77,071	52,883	55,564	5.1%
Ancient Korinthos ⁽¹⁾	141,490	153,307	105,172	137,178	30.4%
Mystras ⁽¹⁾	117,010	114,293	84,297	92,254	9.4%
Delphi	319,754	290,705	203,293	242,877	19.5%
Other archaeological sites	4,656,696	4,538,050	3,042,296	3,432,940	12.8%
II, VISITORS WHO PAID TICKET					
	2015	2016	JANUARY- AUGUST		change
			2016	2017	2017/2016
Total number of visitors who paid ticket (C+D)	10,544,249	8,749,957	5,900,880	6,976,165	18.2%
C, Museums	2,867,641	2,406,665	1,614,726	1,918,141	18.8%
D, Archaeological sites	7,676,608	6,343,292	4,286,154	5,058,024	18.0%
III, VISITORS WITH FREE ADMISSION TICKETS					
	2015	2016	JANUARY- AUGUST		change
			2016	2017	2017/2016
Total number of visitors with free admission ticket (E+F)	4,181,646	5,330,682	3,725,765	4,462,980	19.8%
E, Museums	1,538,201	2,109,301	1,441,609	1,670,626	15.9%
F, Archaeological sites	2,643,445	3,221,381	2,284,156	2,792,354	22.2%
IV, RECEIPTS (euros)					
	2015	2016	JANUARY- AUGUST		change
			2016	2017	2017/2016
Total Receipts (G+H)	56,224,962.00	86,647,638.00	59,099,113.00	71,071,969.00	20.3%
G, Museums	12,385,213.00	13,448,464.00	9,112,483.00	11,092,141.00	21.7%
H, Archaeological sites	43,839,749.00	73,199,174.00	49,986,630.00	59,979,828.00	20.0%

(1) Flat rate ticket, valid both for the museum and the archaeological site

(2) From May 2017 onwards, the data for the number of tickets in the archaeological site of the Acropolis of Athens include the tickets of the Ancient Theatre of Dionysos, therefore the data for the years 2016-2017 are not comparable.

(3) The data on the number of visitors to the Heraklion Museum for August 2016 have been revised.

EXPLANATORY NOTES

Survey on Museums and Archaeological Sites Attendance	The Survey on Museums and Archaeological Sites Attendance has been producing results since 1970, The survey collects data from the Archaeological Receipts Fund (ARF) of the Ministry of Culture and Sports concerning the number of visitors and the receipts from the tickets sold in the Museums and Archaeological sites of the country. The corresponding data for the Acropolis Museum are available from December 2009 onwards.
Legal Framework	The survey is conducted since 1970 on a regular basis and it produces results on a monthly and yearly basis, in compliance with the Joint Ministerial Decision 15189/B379/73.
Reference Period	01/08/2017 to 31/08/2017.
Methodology and Definitions	The Survey is conducted on a monthly basis from data collected from the Archaeological Receipts Fund (ARF) of the Ministry of Culture and Sports concerning on the number of visitors and the receipts from the tickets sold in the Museums and Archaeological sites of the country, ELSTAT tabulates the data on Museums and the Archaeological sites for the whole of the Country, by month and by year.

Information on ticket payment

- From January 2002 onwards, the number of Museums' visitors includes both the visitors who have bought a ticket and the visitors with free admission ticket, From 16-06-1996 onwards, the Museums and the Archaeological sites all over Greece have a paid admission for all the visitors, Greeks and foreigners, all over the year, except in the following days, which are free admission days:
- National Holidays (25th of March and 28th of October)
- The first Sunday every month during the five month period from 1 November to 31 March
- The 6th of March (in memory of Melina Merkouri)
- The 18th of April (International Monuments Day)
- The 18th of May (International Museums Day)
- The 5th of June (International Environment Day)
- The last weekend of September, annually (European Heritage Days)

Free admission tickets

The admission to Museums and Archaeological site is free for:

- Young people from EU-countries aged under 18 years, with current identification card to confirm their age,
- Students of Universities and of Higher and Technical Education Institutions or equivalent institutions of EU-countries, as well as of Tour Guide Training Institutes, with valid student identification card or International Student Identity Card (ISIC)
- Employees of the Hellenic Ministry of Culture, with valid professional identity card
- ICOM and ICOMOS cardholders
- Tour Guides with their current working identification card from the Ministry of Development
- Teachers accompanying pupils and students on primary, secondary and tertiary education institution tours
- Journalists with valid journalists' identification card
- Members of Associations and Societies of Friends of Museums and Archaeological Sites
- Official guests of the Greek Government, after relevant approval
- Escorts of blind persons and persons with disabilities
- Free admission cardholders
- Holders of the Culture Card

Number of flat rate tickets

From April 1999 onwards, in some museums and the nearby archaeological sites, in addition to the ordinary ticket, a new "flat rate ticket" was established, which is valid for both the museum and the nearby archaeological site. The total number of these flat rate tickets for **August 2017** was **139,647**.

More information on the Survey on Museums and Archaeological Sites Attendance and detailed time series are available on: <http://www.statistics.gr/en/statistics/-/publication/SCI21/->