



PRESS RELEASE

INDUSTRIAL PRODUCTION INDEX: August 2019, y-o-y decrease of 0.6%

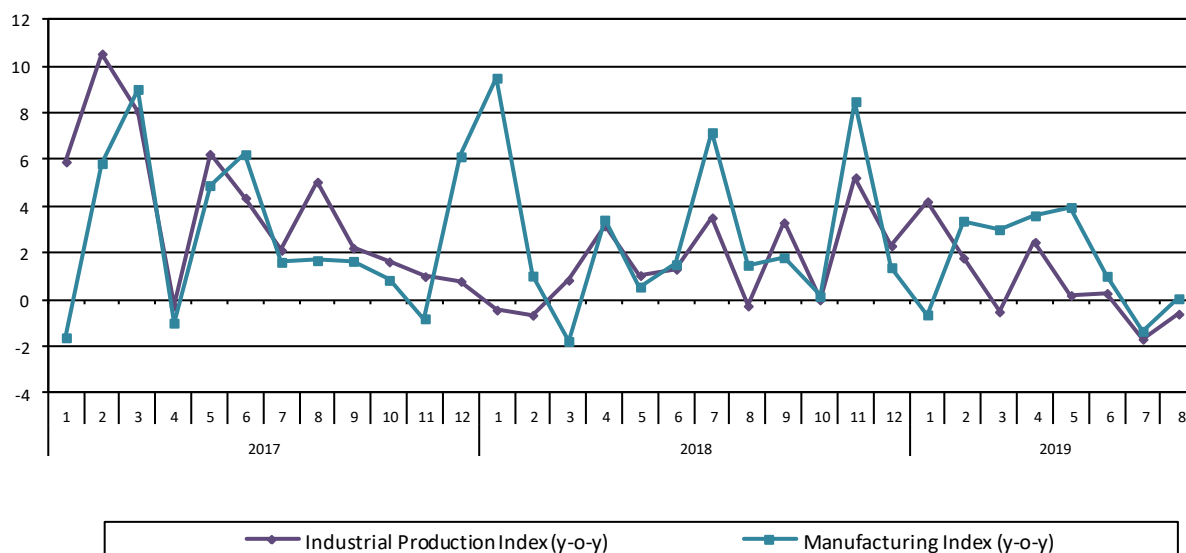
The Hellenic Statistical Authority announces the Industrial Production Index (IPI) with base year 2015=100.0 for August 2019, on the basis of provisional and working day adjusted data, as follows:

The Overall Industrial Production Index in August 2019 recorded a decrease of 0.6% compared with August 2018. The corresponding annual rate of change of the Overall IPI in August 2018 was -0.3% (Table 1).

The average Overall Industrial Production Index for the period from January to August 2019 recorded an increase of 0.7% compared with the average IPI of the period from January to August 2018 (Table 2).

The seasonally adjusted Overall Industrial Production Index in August 2019 recorded an increase of 0.6% compared with July 2019 (Table 4).

Graph 1. Evolution of annual rates of change (y-o-y) of the Industrial Production Index and the Manufacturing Index (%)



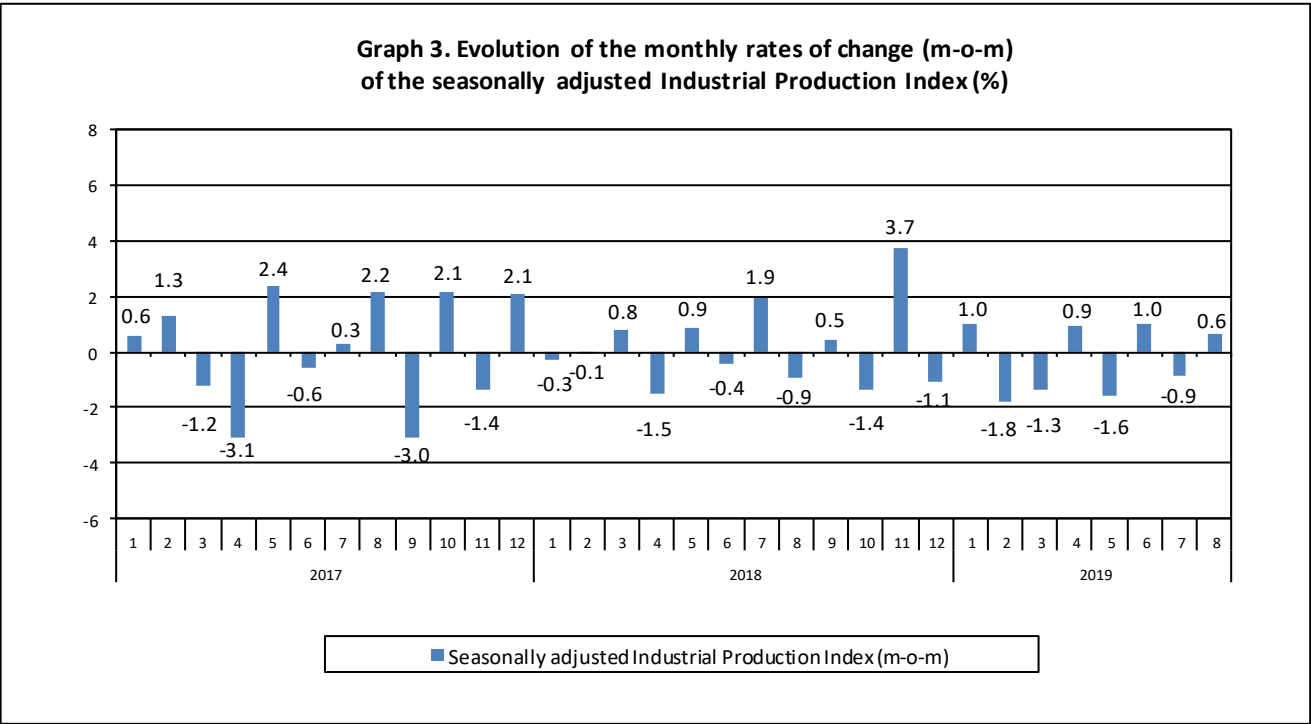
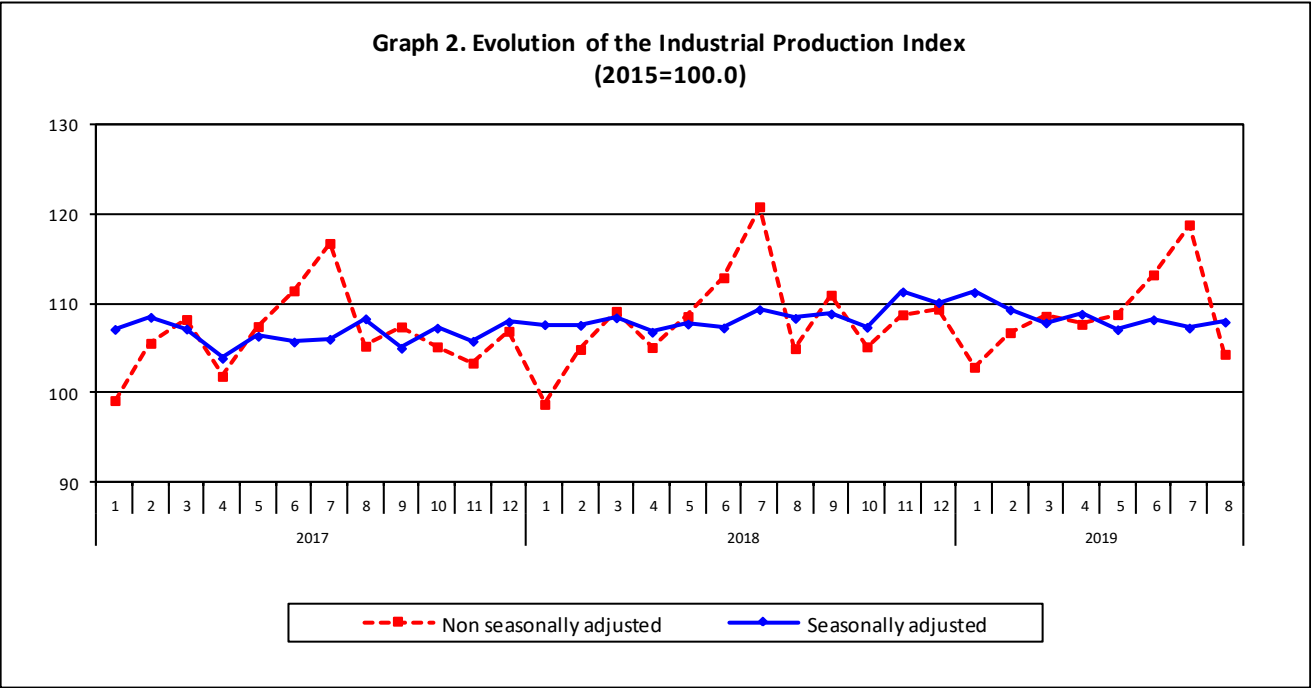
Information for methodological issues:

Business Statistics Division
Manufacture-Construction Indices and Industrial Products Section
Head of the Section: Diamantaki Aikaterini
Tel: +30 213 135 2056
Fax: +30 213 135 2506
E-mail: a.diamantaki@statistics.gr

Information for data provision:

Tel: +30 213 135 2022, 2308, 2310
E-mail: data.dissem@statistics.gr

The following graphs depict the evolution of the seasonally and non-seasonally adjusted Overall Industrial Production Index, as well as the monthly rates of change (m-o-m) of the seasonally adjusted index.



It should be noted that the time series with the seasonally adjusted indices is recalculated every time a new observation is added in the time series. Therefore, the seasonally adjusted data differ from the data published in the previous Press Release.

Evolution of the Industrial Production Index in August 2019

I. Annual changes: August 2019/ August 2018 (Table 1)

The 0.6% decrease of the working day adjusted Overall IPI in August 2019, compared with the corresponding index in August 2018, is due to the annual changes of the sub-indices in the following industrial sections:

1. Decrease of:

- 23.1% in the Mining and Quarrying Index. The decrease was the result of the annual changes of the sub-indices in the following 2-digit divisions: mining of coal and lignite, extraction of crude petroleum and natural gas, mining support service activities, mining of metal ores, other mining and quarrying.
- 0.8% in the Electricity Supply Index.

2. Increase of:

- 0.1% in the Manufacturing Index. The increase was the result of the annual changes of the sub-indices in the following 2-digit divisions: tobacco products, basic pharmaceutical products and pharmaceutical preparations, computers, electronic and optical products, other manufacturing, repair and installation of machinery and equipment.
- 3.9% in the Water Supply Index.

II. Rates of change of the average index in the period January – August 2019 compared with the corresponding index of the period January – August 2018 (Table 2)

The 0.7% increase of the working day adjusted Overall IPI in the 8-month period January – August 2019, compared with the corresponding index in January – August 2018, is due to the corresponding rates of change of the sub-indices in the following industrial sections:

1. Increase of:

- 1.6% in the Manufacturing Index.
- 0.6% in the Water Supply Index.

2. Decrease of:

- 13.5% in the Mining and Quarrying Index.
- 1.0% in the Electricity Supply Index.

III. Monthly changes: August 2019 / July 2019 (Table 4)

The 0.6 increase of the seasonally adjusted Overall IPI in August 2019, compared with the corresponding index in July 2019, is due to the monthly changes of the sub-indices in the following industrial sections:

1. Increase of:

- 5.8% in the Electricity Supply Index.

2. Decrease of:

- 7.5% in the Mining and Quarrying Index.
- 1.5% in the Manufacturing Index.
- 0.1% in the Water Supply Index

The following graph depicts the evolution of the Industrial Production Index and the Industrial Sections Indices.

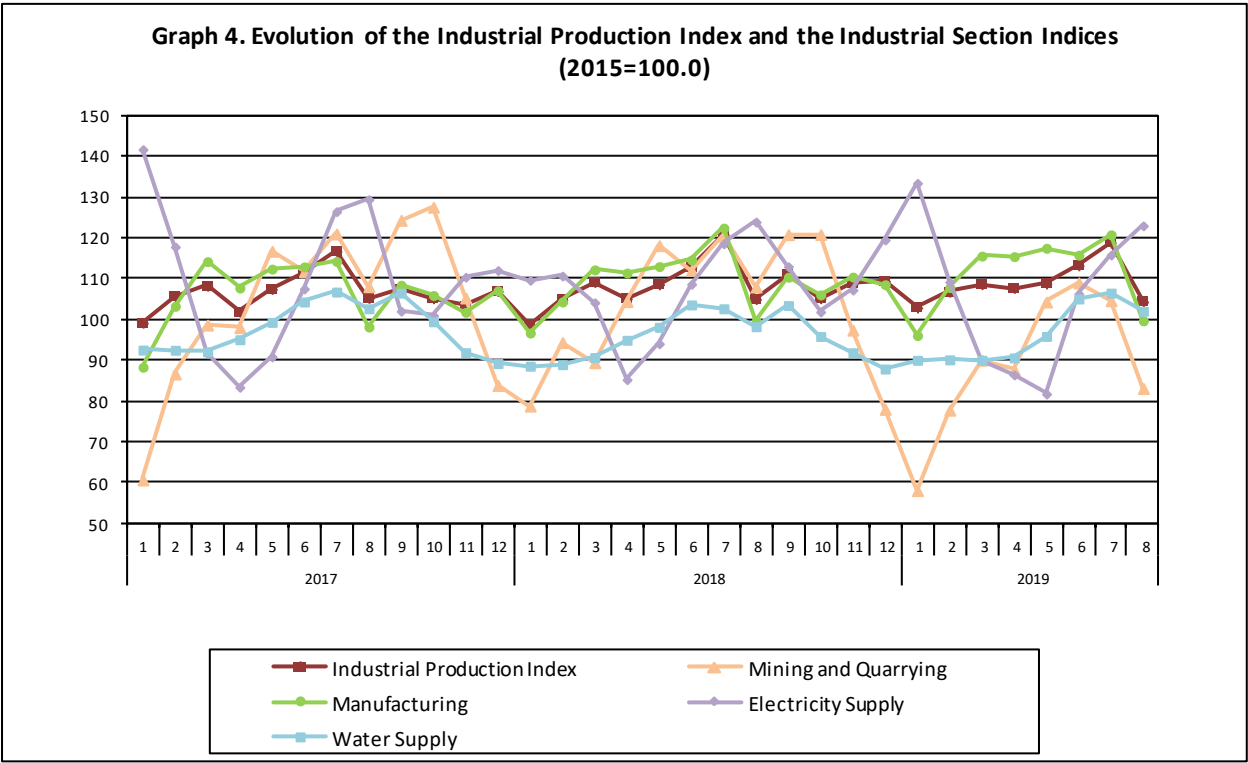


Table 1. Annual rates of change of the Industrial Production Index

(Working day adjusted data, according to the real number of working days)

Base year: 2015=100.0

Code		Division	August			Rate of change (%)	
			2019*	2018	2017	2019/2018	2018/2017
OVERALL INDEX			104.32	104.96	105.23	-0.6	-0.3
B	MINING AND QUARRYING		83.09	107.99	108.05	-23.1	-0.1
05-06-09	Mining of coal and lignite – Extraction of crude petroleum and natural gas – Mining support service activities		34.37	91.07	82.30	-62.3	10.7
07	Mining of metal ores		94.35	127.70	127.27	-26.1	0.3
08	Other mining and quarrying		86.37	103.69	105.23	-16.7	-1.5
C	MANUFACTURING		99.69	99.63	98.17	0.1	1.5
10	Food		117.79	120.25	130.53	-2.0	-7.9
11	Beverages		107.93	108.71	109.76	-0.7	-1.0
12	Tobacco products		90.52	80.46	101.51	12.5	-20.7
13	Textiles		53.18	49.17	63.30	8.1	-22.3
14	Wearing apparel		80.93	90.01	79.54	-10.1	13.2
15	Leather and related products		55.68	63.92	54.68	-12.9	16.9
16	Wood and products of wood and cork, except furniture		79.72	89.08	84.59	-10.5	5.3
17	Paper and paper products		88.97	98.43	92.56	-9.6	6.3
18	Printing and reproduction of recorded products		63.83	73.14	72.81	-12.7	0.5
19	Coke and refined petroleum products		119.15	121.48	102.10	-1.9	19.0
20	Chemicals and chemical products		96.44	91.81	84.80	5.0	8.3
21	Basic pharmaceutical products and pharmaceutical preparations		108.60	77.05	62.31	41.0	23.7
22	Rubber and plastic products		86.09	81.88	82.66	5.2	-0.9
23	Other non-metallic mineral products		97.40	101.91	99.34	-4.4	2.6
24	Basic metals		99.26	113.99	110.06	-12.9	3.6
25	Fabricated metal products, except machinery and equipment		78.51	86.37	97.53	-9.1	-11.4
26	Computers, electronic and optical products		110.15	93.93	69.49	17.3	35.2
27	Electrical equipment		69.26	66.09	71.50	4.8	-7.6
28	Machinery and equipment n. e. c.		64.30	64.81	60.48	-0.8	7.2
29	Motor vehicles, trailers and semi-trailers		67.75	75.87	69.25	-10.7	9.6
30	Other transport equipment		41.82	38.59	40.86	8.4	-5.6
31	Furniture		76.59	82.44	72.27	-7.1	14.1
32	Other manufacturing		84.04	73.71	72.00	14.0	2.4
33	Repair and installation of machinery and equipment		72.84	55.04	51.18	32.3	7.6
D	ELECTRICITY SUPPLY		122.99	123.92	129.43	-0.8	-4.3
35	Electricity supply		122.99	123.92	129.43	-0.8	-4.3
E	WATER SUPPLY		102.03	98.24	102.65	3.9	-4.3
36	Water collection, treatment and supply		102.03	98.24	102.65	3.9	-4.3
MAIN INDUSTRIAL GROUPINGS							
1	Energy		119.51	120.53	117.98	-0.8	2.2
2	Intermediate goods		89.14	94.47	94.81	-5.6	-0.4
3	Capital goods		76.47	73.63	69.61	3.9	5.8
4	Consumer Durables		66.20	66.15	65.90	0.1	0.4
5	Consumer Non-Durables		107.01	104.49	109.28	2.4	-4.4

* Provisional data

Note: The indices are rounded up to two decimal digits when published and percentage changes up to one decimal digit when published.

Table 2. Average indices of the period January – August and rates of change (%) of the Industrial Production Index
(Working day adjusted data, according to the real number of working days)

Base year: 2015=100.0

Code		Division	Average indices of the period Jan.-Aug.			Rate of change (%)	
			2019*	2018	2017	2019/2018	2018/2017
OVERALL INDEX			108.88	108.13	106.95	0.7	1.1
B	MINING AND QUARRYING		89.31	103.21	100.18	-13.5	3.0
05-06-09	Mining of coal and lignite – Extraction of crude petroleum and natural gas – Mining support service activities		63.59	77.85	90.78	-18.3	-14.2
07	Mining of metal ores		109.18	136.52	102.75	-20.0	32.9
08	Other mining and quarrying		86.26	95.47	100.69	-9.6	-5.2
C	MANUFACTURING		111.09	109.29	106.40	1.6	2.7
10	Food		105.83	105.67	104.89	0.2	0.7
11	Beverages		106.23	106.62	100.53	-0.4	6.1
12	Tobacco products		108.69	83.09	105.39	30.8	-21.2
13	Textiles		102.69	106.23	111.29	-3.3	-4.5
14	Wearing apparel		86.31	91.92	93.08	-6.1	-1.2
15	Leather and related products		104.34	107.17	113.26	-2.6	-5.4
16	Wood and products of wood and cork, except furniture		105.50	104.00	105.74	1.4	-1.6
17	Paper and paper products		101.82	106.68	104.63	-4.6	2.0
18	Printing and reproduction of recorded products		96.84	95.16	94.18	1.8	1.0
19	Coke and refined petroleum products		108.06	116.02	111.55	-6.9	4.0
20	Chemicals and chemical products		126.88	118.40	110.82	7.2	6.8
21	Basic pharmaceutical products and pharmaceutical preparations		160.91	127.01	107.43	26.7	18.2
22	Rubber and plastic products		115.23	106.69	105.29	8.0	1.3
23	Other non-metallic mineral products		111.55	117.32	114.04	-4.9	2.9
24	Basic metals		126.47	128.57	125.03	-1.6	2.8
25	Fabricated metal products, except machinery and equipment		117.01	118.87	115.52	-1.6	2.9
26	Computers, electronic and optical products		136.44	107.39	95.41	27.1	12.6
27	Electrical equipment		101.25	98.57	105.35	2.7	-6.4
28	Machinery and equipment n. e. c.		102.90	98.31	96.64	4.7	1.7
29	Motor vehicles, trailers and semi-trailers		77.24	81.83	86.02	-5.6	-4.9
30	Other transport equipment		53.07	56.84	59.74	-6.6	-4.8
31	Furniture		116.27	117.65	100.05	-1.2	17.6
32	Other manufacturing		106.92	101.13	99.39	5.7	1.8
33	Repair and installation of machinery and equipment		87.79	82.35	81.39	6.6	1.2
D	ELECTRICITY SUPPLY		105.74	106.86	111.10	-1.0	-3.8
35	Electricity supply		105.74	106.86	111.10	-1.0	-3.8
E	WATER SUPPLY		96.27	95.71	98.14	0.6	-2.5
36	Water collection, treatment and supply		96.27	95.71	98.14	0.6	-2.5
MAIN INDUSTRIAL GROUPINGS							
1	Energy		105.44	108.57	109.92	-2.9	-1.2
2	Intermediate goods		110.68	111.99	109.83	-1.2	2.0
3	Capital goods		104.66	99.51	94.85	5.2	4.9
4	Consumer Durables		103.36	105.73	100.84	-2.2	4.9
5	Consumer Non-Durables		113.02	107.00	104.64	5.6	2.3

* Provisional data

Note: The indices are rounded up to two decimal digits when published and percentage changes up to one decimal digit when published.

Table 3. Monthly rate of change of the Industrial Production Index*(Working day adjusted data, according to the real number of working days)***Base year: 2015=100.0**

Code	Division	August 2019*	July 2019**	Rate of change (%) Aug. 2019 / July 2019
OVERALL INDEX		104.32	118.83	-12.2
B	MINING AND QUARRYING	83.09	104.63	-20.6
05-06-09	Mining of coal and lignite – Extraction of crude petroleum and natural gas – Mining support service activities	34.37	39.41	-12.8
07	Mining of metal ores	94.35	119.29	-20.9
08	Other mining and quarrying	86.37	109.18	-20.9
C	MANUFACTURING	99.69	120.80	-17.5
10	Food	117.79	119.17	-1.2
11	Beverages	107.93	139.57	-22.7
12	Tobacco products	90.52	93.23	-2.9
13	Textiles	53.18	107.26	-50.4
14	Wearing apparel	80.93	97.40	-16.9
15	Leather and related products	55.68	78.54	-29.1
16	Wood and products of wood and cork, except furniture	79.72	115.13	-30.8
17	Paper and paper products	88.97	103.91	-14.4
18	Printing and reproduction of recorded products	63.83	98.52	-35.2
19	Coke and refined petroleum products	119.15	104.53	14.0
20	Chemicals and chemical products	96.44	137.54	-29.9
21	Basic pharmaceutical products and pharmaceutical preparations	108.60	205.36	-47.1
22	Rubber and plastic products	86.09	120.56	-28.6
23	Other non-metallic mineral products	97.40	115.47	-15.7
24	Basic metals	99.26	128.38	-22.7
25	Fabricated metal products, except machinery and equipment	78.51	136.07	-42.3
26	Computers, electronic and optical products	110.15	130.36	-15.5
27	Electrical equipment	69.26	106.80	-35.1
28	Machinery and equipment n. e. c.	64.30	116.51	-44.8
29	Motor vehicles, trailers and semi-trailers	67.75	80.55	-15.9
30	Other transport equipment	41.82	77.09	-45.7
31	Furniture	76.59	126.35	-39.4
32	Other manufacturing	84.04	126.74	-33.7
33	Repair and installation of machinery and equipment	72.84	82.53	-11.7
D	ELECTRICITY SUPPLY	122.99	115.83	6.2
35	Electricity supply	122.99	115.83	6.2
E	WATER SUPPLY	102.03	106.50	-4.2
36	Water collection, treatment and supply	102.03	106.50	-4.2
MAIN INDUSTRIAL GROUPINGS				
1	Energy	119.51	111.20	7.5
2	Intermediate goods	89.14	117.79	-24.3
3	Capital goods	76.47	114.41	-33.2
4	Consumer Durables	66.20	119.77	-44.7
5	Consumer Non-Durables	107.01	129.95	-17.7

* Provisional data **Revised data

Note: The indices are rounded up to two decimal digits when published and percentage changes up to one decimal digit when published.

Table 4. Monthly rate of change of the seasonally adjusted Industrial Production Index

Base year: 2015=100.0

Code	Division	August 2019	July 2019	Rate of change (%) Aug. 2019 / July 2019
OVERALL INDEX		107.93	107.26	0.6
B	MINING AND QUARRYING	84.03	90.88	-7.5
05-06-09	Mining of coal and lignite – Extraction of crude petroleum and natural gas – Mining support service activities	–	–	–
07	Mining of metal ores	101.72	111.34	-8.6
08	Other mining and quarrying	86.97	90.11	-3.5
C	MANUFACTURING	109.05	110.72	-1.5
10	Food	99.84	102.34	-2.4
11	Beverages	97.23	100.68	-3.4
12	Tobacco products	105.89	91.70	15.5
13	Textiles	106.03	102.65	3.3
14	Wearing apparel	90.01	91.30	-1.4
15	Leather and related products	101.06	99.44	1.6
16	Wood and products of wood and cork, except furniture	103.69	101.83	1.8
17	Paper and paper products	105.16	97.69	7.7
18	Printing and reproduction of recorded products	87.22	99.93	-12.7
19	Coke and refined petroleum products	117.78	105.83	11.3
20	Chemicals and chemical products	129.17	125.90	2.6
21	Basic pharmaceutical products and pharmaceutical preparations	192.84	170.58	13.0
22	Rubber and plastic products	112.50	112.07	0.4
23	Other non-metallic mineral products	110.41	106.87	3.3
24	Basic metals	120.06	124.56	-3.6
25	Fabricated metal products, except machinery and equipment	104.04	118.06	-11.9
26	Computers, electronic and optical products	142.77	139.20	2.6
27	Electrical equipment	102.63	102.35	0.3
28	Machinery and equipment n. e. c.	101.60	109.85	-7.5
29	Motor vehicles, trailers and semi-trailers	105.75	76.75	37.8
30	Other transport equipment	66.08	69.27	-4.6
31	Furniture	115.22	121.08	-4.8
32	Other manufacturing	120.59	114.63	5.2
33	Repair and installation of machinery and equipment	101.09	87.01	16.2
D	ELECTRICITY SUPPLY	105.96	100.17	5.8
35	Electricity supply	105.96	100.17	5.8
E	WATER SUPPLY	96.02	96.11	-0.1
36	Water collection, treatment and supply	96.02	96.11	-0.1
MAIN INDUSTRIAL GROUPINGS				
1	Energy	108.93	102.48	6.3
2	Intermediate goods	107.95	108.34	-0.4
3	Capital goods	110.15	111.37	-1.1
4	Consumer Durables	102.77	108.73	-5.5
5	Consumer Non-Durables	106.40	111.04	-4.2

Notes:

1. The indices are rounded up to two decimal digits when published and percentage changes up to one decimal digit when published.
2. The whole time-series with seasonally adjusted indices is recalculated every time a new observation is added in the time-series.
3. The composed index of divisions 05-06-09 is not seasonally adjusted, due to the fact that it is calculated from January 2015 and thus the number of observations is not adequate.

Table 5. Evolution of the Overall Industrial Production Index
(Working day adjusted data, according to the real number of working days)
Base year: 2015=100.0

Year and month	Overall Index	Monthly rate of change (%)	Annual rate of change (%)	12-month average indices (moving average)	Rate of change of the 12-month average indices (%)
2017: 1	99.14	-6.5	5.9	103.01	2.7
2	105.55	6.5	10.5	103.85	3.8
3	108.22	2.5	8.1	104.52	4.6
4	101.85	-5.9	-0.3	104.50	4.4
5	107.43	5.5	6.2	105.03	4.5
6	111.43	3.7	4.4	105.42	4.3
7	116.75	4.8	2.1	105.62	4.0
8	105.23	-9.9	5.1	106.04	4.2
9	107.39	2.1	2.2	106.24	4.4
10	105.16	-2.1	1.6	106.38	4.0
11	103.34	-1.7	1.0	106.46	3.9
12	106.90	3.5	0.8	106.53	3.9
Annual average	106.53				
2018: 1	98.71	-7.7	-0.4	106.50	3.4
2	104.86	6.2	-0.7	106.44	2.5
3	109.14	4.1	0.8	106.52	1.9
4	105.08	-3.7	3.2	106.79	2.2
5	108.56	3.3	1.0	106.88	1.8
6	112.90	4.0	1.3	107.00	1.5
7	120.86	7.0	3.5	107.34	1.6
8	104.96	-13.2	-0.3	107.32	1.2
9	110.95	5.7	3.3	107.62	1.3
10	105.16	-5.2	0.004	107.62	1.2
11	108.75	3.4	5.2	108.07	1.5
12	109.38	0.6	2.3	108.28	1.6
Annual average	108.28				
2019*: 1	102.87	-6.0	4.2	108.62	2.0
2	106.75	3.8	1.8	108.78	2.2
3	108.58	1.7	-0.5	108.73	2.1
4	107.68	-0.8	2.5	108.95	2.0
5	108.77	1.0	0.2	108.97	2.0
6	113.22	4.1	0.3	108.99	1.9
7	118.83	5.0	-1.7	108.82	1.4
8	104.32	-12.2	-0.6	108.77	1.4

* Provisional data

Note: The indices are rounded up to two decimal digits when published and percentage changes up to one decimal digit when published.

Table 6. Monthly evolution of the seasonally adjusted Overall Industrial Production Index and Main Industrial Groupings

Base year: 2015=100.0

Year and month		Overall Index		Energy		Intermediate goods		Capital goods		Consumer durables		Consumer non-durables	
		Index	Monthly rate of change (%)	Index	Monthly rate of change (%)	Index	Monthly rate of change (%)	Index	Monthly rate of change (%)	Index	Monthly rate of change (%)	Index	Monthly rate of change (%)
2017:	1	107.11	0.6	119.83	4.4	104.54	2.5	93.17	-5.0	91.09	2.5	98.23	-4.6
	2	108.47	1.3	113.24	-5.5	109.52	4.8	106.55	14.4	101.13	11.0	102.77	4.6
	3	107.16	-1.2	106.97	-5.5	110.81	1.2	103.25	-3.1	110.60	9.4	105.39	2.6
	4	103.87	-3.1	107.32	0.3	107.18	-3.3	93.68	-9.3	99.37	-10.1	100.05	-5.1
	5	106.34	2.4	109.03	1.6	109.22	1.9	102.69	9.6	104.20	4.9	101.94	1.9
	6	105.70	-0.6	107.79	-1.1	108.03	-1.1	103.81	1.1	103.63	-0.5	101.98	0.04
	7	106.00	0.3	107.45	-0.3	109.90	1.7	105.21	1.3	100.13	-3.4	101.75	-0.2
	8	108.30	2.2	108.07	0.6	114.44	4.1	98.21	-6.7	99.78	-0.3	106.91	5.1
	9	105.00	-3.0	103.69	-4.1	109.02	-4.7	101.60	3.4	102.53	2.8	104.48	-2.3
	10	107.25	2.1	107.45	3.6	111.55	2.3	101.03	-0.6	104.08	1.5	105.48	1.0
	11	105.78	-1.4	111.05	3.4	107.46	-3.7	94.92	-6.0	101.41	-2.6	101.19	-4.1
	12	107.96	2.1	106.86	-3.8	112.00	4.2	100.59	6.0	111.88	10.3	107.90	6.6
Annual average		106.58		109.06		109.47		100.39		102.49		103.17	
2018:	1	107.64	-0.3	104.02	-2.7	113.47	1.3	111.77	11.1	112.06	0.2	106.19	-1.6
	2	107.57	-0.1	109.15	4.9	110.65	-2.5	100.21	-10.3	107.95	-3.7	105.18	-0.9
	3	108.41	0.8	114.05	4.5	108.16	-2.3	102.32	2.1	105.50	-2.3	103.56	-1.5
	4	106.80	-1.5	107.99	-5.3	111.20	2.8	110.28	7.8	106.85	1.3	101.03	-2.4
	5	107.71	0.9	109.95	1.8	109.58	-1.5	106.00	-3.9	106.06	-0.7	104.09	3.0
	6	107.27	-0.4	108.07	-1.7	109.68	0.1	103.59	-2.3	108.87	2.7	105.33	1.2
	7	109.33	1.9	107.25	-0.8	113.88	3.8	105.91	2.2	101.49	-6.8	109.61	4.1
	8	108.35	-0.9	110.07	2.6	113.63	-0.2	105.43	-0.5	102.05	0.5	103.27	-5.8
	9	108.85	0.5	112.39	2.1	110.48	-2.8	109.32	3.7	100.07	-1.9	103.63	0.3
	10	107.35	-1.4	107.67	-4.2	108.79	-1.5	104.75	-4.2	101.20	1.1	106.84	3.1
	11	111.32	3.7	110.08	2.2	110.92	2.0	108.25	3.3	101.07	-0.1	114.44	7.1
	12	110.12	-1.1	110.57	0.4	108.50	-2.2	107.39	-0.8	103.78	2.7	111.86	-2.3
Annual average		108.39		109.27		110.75		106.27		104.75		106.25	
2019:	1	111.25	1.0	114.45	3.5	109.08	0.5	109.55	2.0	100.75	-2.9	110.05	-1.6
	2	109.29	-1.8	107.36	-6.2	109.84	0.7	113.79	3.9	101.69	0.9	110.42	0.3
	3	107.84	-1.3	101.08	-5.8	112.50	2.4	112.48	-1.1	98.91	-2.7	111.61	1.1
	4	108.81	0.9	104.09	3.0	111.60	-0.8	109.39	-2.7	104.91	6.1	112.40	0.7
	5	107.08	-1.6	99.32	-4.6	110.58	-0.9	108.77	-0.6	104.74	-0.2	113.41	0.9
	6	108.19	1.0	105.73	6.5	109.46	-1.0	109.66	0.8	104.13	-0.6	110.01	-3.0
	7	107.26	-0.9	102.48	-3.1	108.34	-1.0	111.37	1.6	108.73	4.4	111.04	0.9
	8	107.93	0.6	108.93	6.3	107.95	-0.4	110.15	-1.1	102.77	-5.5	106.40	-4.2

Notes:

1. The indices are rounded up to two decimal digits when published and percentage changes up to one decimal digit when published.
2. The whole time-series with seasonally adjusted indices is recalculated every time a new observation is added in the time-series.

METHODOLOGICAL NOTES

Generally	The Industrial Production Index (IPI) in Greece has been compiled by the Hellenic Statistical Authority (ELSTAT) from 1959 onwards.
Purpose of the index	The objective of the index is to compare the magnitude (volume) of the output in the current month in the mining and quarrying, manufacturing, electricity and water supply divisions with the corresponding output of a given fixed period, which is considered as base period. The Industrial Production Index shows the evolution of the value added of the production factors cost, at constant prices.
Legal framework	The compilation of the IPI is governed by Council Regulation (EC) No 1165/98 concerning short-term statistics. Furthermore, the IPI is governed by Regulation (EC) No 1893/2006 of the European Parliament and of the Council, by Commission Regulation (EC) No 656/2007 and by Council Regulation (EC) No 451/2008.
Reference period	Month.
Base year	2015=100.0.
Revision	The IPI is a fixed base index. The Industrial Production Index was currently revised with new base year 2015 (2015=100.0) according to the provisions of Council Regulation No 1165/98 concerning short-term statistics. Short-term indices are revised every five (5) years, particularly in calendar years ending in 0 or 5.
Statistical classifications	At the level of branches of economic activities, the statistical classification of economic activities NACE Rev.2 of EU was used (Regulation No 1893/2006), while at the level of main industrial groups, the allocation of two-digit and three-digit NACE Rev. 2 headings to categories of aggregate classification was used, in accordance with Council Regulation No 656/2007. At product level, the statistical classification CPA 2008 of EU was used, according to Council Regulation No 451/2008.
Geographical coverage	The Index covers the whole Country.
Coverage of economic activities	The index covers all the sections of industry, the main industrial groups, as well as all levels of economic activity.
Statistical survey	The data are collected from a sample of 1,263 enterprises. The survey covers 325 products and the measurement of the surveyed products is made in terms of output quantities or in terms of production value or turnover, according to the specific features in each branch of economic activity.
Seasonal adjustment	Seasonal adjustment is the procedure followed to remove the impact of seasonality on the time-series (i.e. the impact of monthly effects, e.g. holidays, tourist period etc), in order to improve comparability over time. The method used is the TRAMO-SEATS method with the use of JDemetra+ 2.0.0. For the seasonal adjustment of the Industrial Production Index at 2-digit level of NACE Rev.2, at section level (B – Mining and Quarrying, C – Manufacturing, D – Electricity and E – Water Supply) and for the Main Industrial Groupings (MIGs), the direct approach is applied, namely each time-series is seasonally adjusted independently. For the overall Industrial Production Index, the indirect approach is applied, with the seasonally adjusted IPI being computed by aggregating the seasonally adjusted MIGs using appropriate weights.
Publication of data	The revised IPI with the new base year 2015 (2015=100.0) is released since July 2019, with May 2019 as the first reference month. Data with base year 2015=100.0 are available from January 2000 onwards.
References	More information about the methodology concerning the compilation and calculation of the index and for the time series is available on the website of the Hellenic Statistical Authority (ELSTAT) (http://www.statistics.gr/en/statistics/-/publication/DKT21/).